



HAL
open science

AlgaeTraits: a trait database for (European) seaweeds

Sofie Vranken, Marine Robuchon, Stefanie Dekeyzer, Ignacio Bárbara, Inka Bartsch, Aurelie Blanfuné, Charles-François Boudouresque, Wim Decock, Christophe Destombe, Bruno de Reviers, et al.

► To cite this version:

Sofie Vranken, Marine Robuchon, Stefanie Dekeyzer, Ignacio Bárbara, Inka Bartsch, et al.. Algae-Traits: a trait database for (European) seaweeds. ESSD – Ocean/Biological oceanography. 2022, 57 p. mnhn-03955495

HAL Id: mnhn-03955495

<https://mnhn.hal.science/mnhn-03955495>

Submitted on 25 Jan 2023

HAL is a multi-disciplinary open access archive for the deposit and dissemination of scientific research documents, whether they are published or not. The documents may come from teaching and research institutions in France or abroad, or from public or private research centers.

L'archive ouverte pluridisciplinaire **HAL**, est destinée au dépôt et à la diffusion de documents scientifiques de niveau recherche, publiés ou non, émanant des établissements d'enseignement et de recherche français ou étrangers, des laboratoires publics ou privés.



Distributed under a Creative Commons Attribution 4.0 International License



1 **AlgaeTraits: a trait database for (European) seaweeds**

2 Sofie Vranken^{1, 2, #}, Marine Robuchon^{3, 4, 5, #}, Stefanie Dekeyzer¹, Ignacio Bárbara⁶, Inka
3 Bartsch⁷, Aurélie Blanfuné⁸, Charles-François Boudouresque⁸, Wim Decock¹, Christophe
4 Destombe⁹, Bruno de Reviers³, Pilar Díaz-Tapia^{6, 10}, Anne Herbst¹¹, Romain Julliard⁴, Rolf
5 Karez¹², Priit Kersen¹³, Stacy A. Krueger-Hadfield¹⁴, Ralph Kuhlenkamp¹⁵, Akira F. Peters¹⁶,
6 Viviana Peña⁶, Cristina Piñeiro-Corbeira⁶, Fabio Rindi¹⁷, Florence Rousseau⁴, Jan Rueness¹⁸,
7 Hendrik Schubert¹⁹, Kjersti Sjøtun²⁰, Marta Sansón²¹, Dan Smale²², Thierry Thibaut⁸, Myriam
8 Valero⁹, Leen Vandepitte¹, Bart Vanhoorne¹, Alba Vergés²³, Marc Verlaque⁸, Christophe
9 Vieira²⁴, Line Le Gall^{3, □}, Frederik Leliaert^{25, □}, Olivier De Clerck^{1, □}

10 ¹Biology Department, Research Group Phycology, Ghent University, Ghent, 9000, Belgium

11 ²Flanders Marine Institute (VLIZ), InnovOcean Campus, Jacobsenstraat 1, Oostende, 8400, Belgium

12 ³Institut de Systématique, Evolution, Biodiversité (ISYEB), Muséum National d'Histoire Naturelle, Centre
13 National de la Recherche Scientifique, Sorbonne Université, Ecole Pratique des Hautes Etudes, Université des
14 Antilles, Paris, 75005, France

15 ⁴Centre d'Ecologie et des Sciences de la Conservation (CESCO), Muséum national d'Histoire naturelle, Centre
16 National de la Recherche Scientifique, Sorbonne Université, Paris, 75005, France

17 ⁵Joint Research Centre (JRC) of the European Commission, Directorate for Sustainable Resources, Ispra (VA),
18 21027, Italy

19 ⁶BIOCOST Research Group, Faculdade de Ciências, Universidade da Coruña, A Coruña, 15071, Spain

20 ⁷Alfred Wegener Institute, Helmholtz Centre for Polar and Marine Research, Bremerhaven, 27570, Germany

21 ⁸Aix Marseille University and Université de Toulon, CNRS, IRD, Mediterranean Institute of Oceanography
22 (MIO), Marseille, UM 110, France

23 ⁹IRL 3614, CNRS, SU, UACH, PUC, Station Biologique de Roscoff, Place Georges Teissier, Roscoff, 29688,
24 France

25 ¹⁰Centro Nacional Instituto Español de Oceanografía (IEO-CSIC), Centro Oceanográfico de A Coruña, A Coruña,
26 15001, Spain

27 ¹¹Department Maritime System, Interdisziplinäre Fakultät, Rostock, 18057, Germany

28 ¹²State Agency for Agriculture, Environment and Rural Areas Schleswig-Holstein, Flintbek, 24220, Germany

29 ¹³Agriculture and Food Board, Teaduse 2, Saku, Harjumaa, 75501, Estonia

30 ¹⁴Department of Biology, University of Alabama at Birmingham, Birmingham, 35294, Alabama, United States

31 ¹⁵Phycosmarin, Hamburg, 21149, Germany

32 ¹⁶Bezhin Rosko, Santec, 29250, France

33 ¹⁷Dipartimento di Scienze della Vita e dell'Ambiente, Università Politecnica delle Marche, Via Breccie Bianche,
34 Ancona, 60131 Italy

35 ¹⁸Department of Biosciences, University of Oslo, Oslo, 0315, Norway

36 ¹⁹Institute for Biosciences, University Rostock, Rostock, 18051, Germany

37 ²⁰Department of Biological Sciences, University of Bergen, Bergen, 5020, Norway

38 ²¹Departamento de Botánica, Ecología y Fisiología Vegetal, Universidad de La Laguna, La Laguna, 38200,
39 Canary Islands

40 ²²Marine Biological Association of the United Kingdom, Citadel Hill, Plymouth, PL1 2PB, United Kingdom

41 ²³Marine Resources and Biodiversity Research Group (GRMAR), Institute of Aquatic Ecology, University of
42 Girona, Girona, 17003, Spain.

43 ²⁴Research Institute for Basic Sciences, Jeju National University, Jeju, 63243, Korea

44 ²⁵Meise Botanic Garden, Meise, 1860, Belgium

45

46 [#]these authors contributed equally as first authors

47 [□]these authors contributed equally as last authors

48 *Correspondence to:* Sofie Vranken (sofie.vranken@ugent.com), Olivier De Clerck (olivier.declerck@ugent.be)

49



50 **Abstract.** The analysis of biological and ecological traits has a long history in evolutionary and ecological
51 research. However, trait data are often scattered and standardised terminology that transcends taxonomic and
52 biogeographical context are generally missing. As part of the development of a global trait database of marine
53 species, we collated trait information for European seaweeds and structured the data within the standardised
54 framework of the World Register of Marine Species (WoRMS). We collected 45,175 records for 21 biologically
55 and ecologically relevant traits of seaweeds. This resulted in a trait database for 1,745 European seaweed species
56 of which more than half (56%) of the records were documented at the species level, while the remaining 44% was
57 documented at a higher taxonomic level and subsequently inherited at lower levels. The trait database for
58 European seaweeds will serve as a foundation for future research on diversity and evolution of seaweeds, and
59 their responses to global changes. The data will contribute to developing detailed trait-based ecosystem models,
60 and will be an important tool to inform marine conservation policies. The data is publicly accessible through the
61 AlgaeTraits portal, algaetraits.org, doi: <https://doi.org/10.14284/574>, (AlgaeTraits, 2022).

62

63 **Keywords.** Trait-based ecology, Functional groups, Macroalgae, Morphology, Life history traits

64



65 **1 Introduction**

66 Trait-based approaches, focusing on diversity of organismal characteristics rather than species diversity, are
67 effective data source to answer important biological questions (Costello et al., 2015; Beauchard et al., 2017; Degen
68 et al., 2018). Traditionally, traits have been and still are of significant value for taxonomic research (Voultsiadou
69 et al., 2017). Moreover, as they enable the description and investigation of complex ecosystems in relatively
70 simple ways without having to laboriously study each individual component species, they are also integral to the
71 study of the ecological and evolutionary dynamics of populations, species, communities, and ecosystems (Violle
72 et al., 2007; Kattge et al., 2011; Degen et al., 2018; Schleuning et al., 2020). For example, the analysis of trait data
73 can assist in estimating responses to multiple stressors, including anthropogenic and climate change impacts
74 (Degen et al., 2018; Schleuning et al., 2020), and may provide crucial information needed to develop effective
75 management strategies to counter negative consequences of climate change (Bremner, 2008).

76 Although the importance of trait-based approaches is widely recognised, there remains a general lack of
77 accessible, standardised, and harmonised trait data for aquatic organisms (Costello et al., 2015; Beauchard et al.,
78 2017; Degen et al., 2018; Martini et al., 2021). Recent initiatives have intended to resolve this gap and made
79 significant progress for some marine animals, including fishes, polychaetes, copepods, and macroinvertebrates
80 (reviewed in Martini et al., 2021), but aquatic photoautotrophs, including marine macroalgae (or seaweeds),
81 remain underrepresented.

82 Seaweed traits and functional forms have been used for at least one century as a tool to answer various ecological
83 and evolutionary questions. Since the early 1900s, traits have been explored to formulate life-form classification
84 schemes for algae which intended to reflect habitat requirements and responses to environmental fluctuations
85 (Chapman and Chapman, 1976; Feldmann, 1966), or describe different reproductive strategies (Clayton, 1988;
86 De wree de and Kinger, 1988; Bell 1994) used to explain various evolutionary questions (Heesch et al., 2021). In
87 the 1980s, Littler & Littler (1980; 1983) used the adaptive value of morphological traits to categorise algal species
88 into morpho-functional groups, which cluster species with similar ecological functioning. As the concept of
89 morpho-functional groups is relatively easy to apply and can limit processing time and associated costs, it has
90 been frequently applied in seaweed ecology (Veiga et al., 2013; Vélez-Rubio et al., 2021). As a result, multiple
91 variations of the original six morpho-functional groups have been developed and applied in a wide range of
92 contexts. For example, they have been applied to understand the distribution of communities along spatial
93 (Steneck and Dethier, 1994; Wieters et al., 2012; Gaspar et al., 2017) or environmental scales (Balata et al., 2007;
94 Gaspar et al., 2017; Gómez et al., 2019; Gómez and Huovinen, 2020), the potential of communities to resist
95 invasion (Arenas et al., 2006), and to evaluate the ecological status of coastal waters (Orfanidis et al., 2011). Yet,
96 other recent research indicates that current morpho-functional groups may not capture enough variation to describe
97 ecological functioning (Mauffrey et al., 2020; Ryznar et al., 2020) and call for further development towards a
98 broader trait-based approach that includes non-morphological and other traits (Mauffrey et al., 2020).

99 Seaweed trait information remains largely scattered, not widely available, and not semantically standardised,
100 which has hampered the development and application of phycological trait-based approaches over broad
101 taxonomic, spatial, or temporal scales. To overcome such drawbacks and enhance the development of a common
102 ontology favouring the use and comparability of trait-based approaches on seaweeds, we present AlgaeTraits, a
103 seaweed trait database for 1,745 species occurring along the Atlantic and Mediterranean coasts of Europe. We
104 expand the spectrum of commonly used functional traits (i.e., measurable or quantifiable properties of individuals;



105 McGill et al., 2006) to include data on habitat, seasonality, morphology, life cycle, life history, and
106 biogeographical range (Fig. 1, Table A1). In total, we describe 21 traits linked to taxonomic information, covering
107 nine of the 10 previously prioritised traits in Costello et al. (2015). These data are available on the AlgaeTraits
108 data portal algaetraits.org, doi: <https://doi.org/10.14284/574> (AlgaeTraits, 2022), which is a subregister of the
109 World Register of Marine species (WoRMS, 2022; Marine Species Traits, 2022). Here we introduce AlgaeTraits
110 by (i) presenting the methodologies used to collect data, (ii) highlighting trait coverage for the current and first
111 version of the database and (iii) exploring trait variability for a selected subset of traits.

112 **2 Data**

113 **2.1 Trait collection**

114 Trait data collection started with an extensive literature review in 2013, supported by the Biology project of the
115 European Marine Observation and Data Network (EMODnet). In 2015, the data were further refined with expert
116 opinions. In total, more than 200 references were used and 33 experts (all co-authors on this article) contributed
117 by filling out a survey. For specific traits where interspecific variation is known to be minimal, trait information
118 was documented in the World Register of Marine Species (WoRMS, 2022) at the genus level. The database behind
119 WoRMS (Aphia, see further) is built in such a way that the information at the genus level is then automatically
120 inherited to all species within this genus, if no information at the species level was provided or available. Traits
121 that may have substantial interspecific variation, such as Blooming, Seasonality, Wave exposure, Zonation, and
122 Body Size (Table A1), were not inherited from the genus to species level, and were only documented at the species
123 level. Contributions were quality-checked to verify if they conformed to the survey and the database format.

124 **2.2 Trait data**

125 We included 21 traits for marine seaweeds, of which eight ecological traits, four morphological traits, six life
126 cycle traits, and three life history related traits (Fig. 1, Table A1). Ecological traits relate to the habitat of the
127 seaweed with respect to ‘Environment’ (Marine, Freshwater, Brackish), tidal ‘Zonation’, various degrees of
128 ‘Wave exposure’, ‘Environmental position’ (substrate), ‘Tolerance to organic pollutants’, ‘Vertical space use’,
129 and ‘Seasonality’. In the few instances where seaweed species are known for their potential to form blooms this
130 has been indicated as well (Fig. 1, Table A1). Morphological traits describe the thallus based on ‘Body Shape’,
131 ‘Body Size’, ‘Calcification’, and ‘Cytomorphology’ (Fig. 1, Table A1). ‘Body size’ is the only quantitative trait
132 included in AlgaeTraits and can be documented as a mean, maximum, or minimum value to describe the thallus
133 length or diameter. Life history related traits describe patterns that influence demography and population
134 dynamics, while life cycle traits relate to the various stages an organism undergoes from one stage in its
135 development (e.g. fertilisation) to the same stage in the next generation (Albecker et al. 2021) (Fig. 1, Table A1).
136 In addition to these 21 traits, species distributions were documented as ecoregions defined by Spalding et al.
137 (2007) and can be used to subset the database according to geographic region. Moreover, WoRMS also displays
138 species’ occurrences of the Ocean Biodiversity Information System (OBIS; www.obis.org) (Fig. 1). Contrary to
139 the other traits, ‘Environment’ and ‘Distribution’ were not uploaded as traits (i.e., attributes) in the database
140 system (Aphia, see further) but as environment flags and distributions. This implies that ‘Environment’ and
141 ‘Distribution’ are slightly different visualised on the AlgaeTraits data portal (www.AlgaeTraits.org).



142 **2.3 Taxonomy**

143 The total number of described seaweeds is estimated at 9,250 species on a global scale (Appeltans et al., 2012;
144 Guiry 2012), of which at least 1,800 species occur in Europe (Costello et al., 2022). The taxonomic classification
145 of these species is not always straightforward and is continuously updated. To provide the best possible taxonomic
146 accuracy, the trait data were implemented in WoRMS. WoRMS aims to provide a complete taxonomic
147 authoritative list of all currently published names of marine species and is synchronised with AlgaeBase, the most
148 complete database on global algal taxonomic information (Guiry and Guiry, 2022).

149 **2.4 Meta-data**

150 Every trait value is linked to a source (expert or literature) and a note field that can be used to include relevant
151 meta-data related to specific trait-values. As values for the traits ‘Asexual reproduction’, ‘Macroalgal Blooming’,
152 ‘Body Size’, and ‘Seasonality’ may display considerable geographic variation we assigned a specific locality to
153 these trait values. Localities are defined as georegions obtained from the Marine Regions platform, which provides
154 a hierarchical, standardised list of georeferenced marine regions and areas (www.MarineRegions.org) As
155 mentioned above, life cycles of seaweeds can be complex and often consist of different life stages with radically
156 different morphological, physiological, and ecological characteristics (Fig. 2). When relevant, trait values are
157 documented for the specific life cycle stage they apply to (i.e., sporophyte, gametophyte, microthallus,
158 macrothallus).

159 **2.5 Database structure and management**

160 The AlgaeTraits database is a thematic subregister of WoRMS, part of the Aphia platform (Vandepitte et al., 2015;
161 2018). The Aphia platform is an MS SQL (Microsoft Structured Query Language) database specifically built to
162 include taxonomic data and related information such as biological traits. In total, Aphia contains more than 400
163 data fields, which are maintained by more than 500 experts under guidance of the WoRMS steering committee,
164 which takes the lead on setting priorities and future directions, and coordination of the experts (Vandepitte et al.,
165 2015; 2018). Both editors and database users are supported by a data management team that includes technical
166 and scientific staff hosted at the Flanders Marine Institute (VLIZ) and can be contacted through
167 info@marinespecies.org. This data management team is committed to safeguarding the integrity and online access
168 of the database.

169 **3 Results**

170 Twenty-one traits were documented resulting in 45,195 entries for 2,830 accepted taxa according to AlgaeBase,
171 among which 681 were at the genus level and 1,742 at the species level. Fifty-six percent of the trait entries for
172 species were inherited from the genus level. ‘Environment’ and ‘Cytomorphology’ were the traits most
173 documented for species, while the least information was provided for the traits that show substantial variation
174 within genera and that were not inherited from genus to species level (Fig. 3).



175 **3.1 Morphology-related traits**

176 **3.1.1 Body shape**

177 Seaweeds are known for their wide variation in body shapes, as illustrated in Fig. 4. For example, seaweeds can
178 exist as filaments (filamentous) or be leaf- (foliose) or cushion-like (saccate). They can trail closely along the
179 surface (prostrate) or be upright (erect), or take many other shapes (Table A1, Fig. 4). ‘Body shape’ had a high
180 data coverage of 96% (1,678 species) at the species level (Fig. 3, Fig. 5-7).

181 **3.1.2. Body size**

182 Seaweed ‘Body size’ was described in several dimensions (thallus length, diameter, width, thickness, height) and
183 varied from a few micrometres in thickness or width (e.g., filamentous, turf forming species such as
184 *Hapalospongidion macrocarpum*) to several metres long (e.g., kelp such as *Saccharina latissima*). Compared to
185 other traits, ‘Body size’ had a relatively low data coverage of 28% (490 species) for European accepted seaweed
186 species (Fig. 3, Fig. 5-7).

187 **3.1.3 Calcification**

188 Several species in different taxonomic groups have calcified thalli (Fig. 8-10). In the green seaweed orders
189 Dasycladales and Bryopsidales, calcification can occur as intra- or extracellular aragonite deposition, and both
190 orders contain calcified articulated and calcified non-articulated species (Fig. 8). In European brown seaweeds,
191 calcification is restricted to *Padina* (Dictyotales), where the surface of several species is covered with aragonite
192 crystals (Benita et al. 2018) (Fig. 4A, Fig. 9). Calcification in various forms is present in four European orders of
193 red seaweeds; in the Corallinales and Sporoplithales as calcite in the cell walls (Fig. 4D, Fig. 10), whereas the
194 Peyssonneliales and Nemaliales deposit aragonite (Pentecost 1980). ‘Calcification’ had a high data coverage of
195 96% (1,670 species) on a European level (Fig. 3, Fig. 5-7).

196 **3.1.4 Cytomorphology**

197 ‘Cytomorphology’ was the trait best documented on a European level and reached a data coverage of 99% (1,726
198 species) (Fig. 4, Fig. 5-7). Although the trait which distinguishes uni- from multicellular organisms and therefore
199 might be perceived as trivial, in a seaweed context, it does set apart macroscopic multicellular thalli from a series
200 of exotic cytomorphologies, including coenocytic and siphonal growth forms. Especially in green seaweeds (e.g.,
201 Bryopsidales and Dasycladales), the morphology of the thallus is decoupled from the formation of cells, which
202 may result in thalli tens of centimetres tall and differentiated in blade-like structures, stolons and rhizoids, while
203 still being essentially unicellular.

204 **3.2 Ecology-related traits**

205 **3.2.1 Environmental position**

206 ‘Environmental position’ was well documented on the European level with 94% (1,636 species) (Fig. 3, Fig. 5-
207 7). Most seaweeds grow attached to rock (epilithic) or other macrophytes (epiphytic), while some other species
208 grow on animals (epizoic) or within rocks (endolithic), macrophytes (endophytic) or animals (endozoic) (Table
209 A1). Many seaweeds are not very specific with respect to the substrate onto which they are attached. The same



210 species may grow epilithically or epiphytically, but some species show high substrate specificity. Several
211 diminutive algal species (e.g., *Acrochaete*, *Acrochaetium*, *Laminariocolax* and *Myrionema*) grow exclusively
212 epiphytically, endophytically or even endozoically on a variety of hosts. At least for some species (e.g., *Vertebrata*
213 *lanosa* being associated with *Ascophyllum nodosum*), high substrate specificity has been demonstrated (Garbary
214 2017).

215 3.2.2 Macroalgal blooming

216 ‘Macroalgal blooming’ indicates the demonstrated capacity of a species to produce blooms. This trait had
217 relatively low data coverage of 13% (233 species) on a European level (Fig. 3, Fig. 5-7). Notorious examples of
218 blooming species include *Ulva prolifera*, *Cladophora glomerata*, *Caulerpa cylindracea*, holopelagic *Sargassum*
219 and *Rugulopteryx okamurae*, and events have been often linked to eutrophication (Charlier et al. 2008; Smetacek
220 and Zingone 2013). The trait, however, shows considerable variation with geographic location. This is exemplified
221 by several non-native species, which bloom in the invaded region while showing non such behaviour in their
222 regions of origin. This variation was incorporated in the database by linking entries for ‘Macroalgal blooming’ to
223 geographic localities.

224 3.2.3 Seasonality

225 ‘Seasonality’ had a relatively low data coverage of 14% on a European level (249 species) (Fig. 3, Fig. 5-7).
226 Seaweeds with large geographical ranges adapt to local seasonal conditions by adjusting their phenology (Lüning
227 1991). It is therefore possible for a species to be present in one season in one part of its range while being absent
228 elsewhere.

229 3.2.4 Vertical space

230 All types of ‘Vertical space’ (encrusting, turf, sub-canopy, canopy; Table A1) occur and vary among and within
231 orders of the green (Fig. 8), brown (Fig. 9) and red seaweeds (Fig. 10). ‘Vertical space’ had a moderate coverage
232 of 46% on European level (808 species) (Fig. 3, Fig. 5-7).

233 3.2.5 Tolerance to organic pollutants

234 Some seaweeds have a lower tolerance to turbidity or nutrient concentrations than others (Table A1). For example,
235 *Choristocarpus tenellus* is mainly observed in waters with low nutrient levels and high visibility (oligotrophic,
236 clear water; Table A1), while *Ulva* spp. are mainly observed from waters with mid to high nutrient concentration
237 (meso-, eutrophic; Table A1). ‘Tolerance to organic pollutants’ was covered for 39% of European accepted
238 seaweeds (678 species) (Fig. 3, Fig. 5-7).

239 3.2.6 Wave exposure

240 Some seaweed species are solely known from habitats with low energy wave forces (sheltered; Table A1) such as
241 *Chaetomorpha adriantii* or from habitats with solely high energy wave forces (exposed; Table A1) such as *Valonia*
242 *utricularis*. Other seaweeds can occur in a variety of wave exposures including sheltered semi-exposed and
243 exposed such as the non-native *Sargassum muticum*. ‘Wave exposure’ had a relatively low coverage of 18% on
244 the European level (315 species) (Fig. 3, Fig. 5-7).



245 3.2.7 Zonation

246 Many species are physiologically adapted to endure the stress of tidal differences and daily changes between
247 desiccation and submersion (e.g. *Pelvetia canaliculata*). Other species will only occur below the low water mark
248 and do not endure such high variation in desiccation, salinity, temperature or other stressors under normal
249 conditions (e.g. *Alaria esculenta*). ‘Zonation’ had a relatively low data coverage of 18% on a European level (316
250 species) (Fig. 3, Fig. 5-7).

251 3.3 Life cycle related traits

252 3.3.1 Life cycle

253 Information on ‘Life cycle’ was available for 95% of European seaweed species (1,660 species) (Fig. 3, Fig. 5-
254 7). Many seaweeds have a biphasic or haplodiplontic life cycle in which a diploid sporophytic and a haploid
255 gametophytic life phases alternate. These can have a similar (isomorphic; e.g., *Chondrus crispus*) or distinct
256 (heteromorphic) body shape (e.g., Laminariales) (Fig. 2). Haplodiplontic life cycles are the dominant type of life
257 cycle in the brown (Fig. 9) and red (Fig. 10) seaweeds. Other seaweeds have a monophasic life cycle that is either
258 diploid (diplontic) or haploid (haplontic) (Fig. 2). Variation in the life cycle has been documented in several
259 species either in the lab (e.g., in reds, Maggs 1988; in *Ectocarpus*, Coelho et al., 2012) or in the field (e.g., in
260 *Gracilaria*, Destombe et al., 1989). However, the knowledge about the processes driving this variation (e.g.
261 epigenetic (plastic) or genetic bases) is not known.

262 3.3.2 Asexual reproduction

263 In many seaweeds, sexual reproduction occurs alongside asexual reproduction (i.e., partial clonality) that does not
264 involve fusion of gametes or meiosis and usually results in progeny with an identical genetic constitution to the
265 parent and to each other (Table A1). Asexual reproduction is widely spread in green, brown, and red seaweeds
266 (Fig. 8-10) and can happen through fragmentation, direct development of spores, parthenogenesis, or other
267 mechanisms. ‘Asexual reproduction’ had a high data coverage of 95% on a European level (1,649 species) (Fig.
268 3, Fig. 5-7).

269 3.3.3 Dispersion mode

270 Seaweed dispersal is heavily influenced by ocean currents and water motion (but in red seaweeds, animal mediated
271 transport of male gametes could be important, Lavaut et al., 2022) and is in most cases limited in spatial scale.
272 But dispersal over longer distances is also possible when the species can for example drift, or the dispersal is
273 mediated by vectors such as boat hulls (Table 1A). ‘Dispersion mode’ has a moderate data coverage of 80% on
274 the European level (1,401 species) (Fig. 3, Fig. 5-7).

275 3.3.4 Gamete type

276 ‘Gamete type’ varies among and within orders of green and brown seaweeds (Fig. 8, Fig. 9). In red seaweeds,
277 ‘Gamete type’ is more conserved: male gamete is unflagellated (spermatia) and fertilisation takes place in the
278 female organ called the carpogonium. This type of reproduction is considered oogamous when information is
279 available. This trait was documented for 95% of the European seaweeds (1,661 species) (Fig. 3, Fig. 5-7).



280 3.3.5 Gametophyte arrangements

281 In seaweeds, the male and female gametes can be formed on the same or separate thalli (mono- vs. di-), sex
282 determination can happen in both the haploid and diploid life phase depending on the taxon (-oicous vs. -oecious)
283 (Fig. 3, Table A1). For example, in fucoids, sex determination occurs in the diploid-dominant stage, whereas, in
284 all red seaweeds, sex determination occurs in the haploid stage. ‘Gametophyte arrangement’ was documented for
285 93% of the European seaweed species (1626 species) (Fig. 3, Fig. 5-7).

286 3.3.6 Spawning

287 For the majority of the brown and green seaweeds, fertilisation occurs in the water column, but in red seaweeds,
288 male gametes are not flagellated and fertilisation occurs on the female gametophyte and gives rise to the ‘third
289 phase’ of the life cycle called the carposporophyte. ‘Spawning’ has been documented for 95% of European species
290 (1,658 species) (Fig. 3, Fig. 5-7).

291 3.4 Life history-related traits

292 3.4.1 Generation time

293 Of all traits, least information was collected for the trait ‘Generation time’ (Fig. 4B). In seaweeds, generation time
294 can vary from just a few weeks in *Ulva* (Wichard et al., 2015) to multiple decades such as in *Gracilaria* (Engel
295 et. al 2001) or *Ascophyllum* (Åberg 1992). Generation time was documented for only 7% of the European seaweed
296 (117 species) (Fig. 3, Fig. 5-7).

297 3.4.1 Life span

298 ‘Life span’ varies within and among European green, brown, and red seaweeds (Fig. 8-10). Perennial macroalgae
299 can live up to multiple years such as for several years, such as many kelp species (Laminariales), or *Gracilaria*
300 *gracilis* that can live for more than 50 years (Engel et al., 2001), or *Ascophyllum nodosum*, which can live for
301 more than 120 years (Åberg 1992). In contrast, annuals live only a few months, such as several small filamentous
302 species (e.g. *Chaetomorpha*). At the European level, data coverage was high for ‘Life span’, 95% (1,652 species)
303 (Fig. 3, Fig. 5-7).

304 3.4.5 Reproductive frequency

305 Data coverage was limited for ‘Reproductive frequency’, with data available for only 25% for the European
306 species (427 species) (Fig. 3, Fig. 5-7).

307 4. Discussion

308 AlgaeTraits includes 21 traits, 1,742 European seaweed species, and is structured within a general framework and
309 ontology aiming to describe all marine species (Costello et al., 2015). With a mean coverage of ~60% per trait,
310 this database will be a solid tool for a variety of biological research and related fields, including marine
311 conservation, nature-based solutions, and aquaculture. For example, traits can be used to monitor community and
312 ecosystem changes (McGill et al., 2006; Vélez-Rubio et al., 2021) or to identify conservation priorities (Albouy



313 et al., 2017; Cardecia et al., 2018; Esmacili et al., 2022). In addition, they can be incorporated into predictive
314 modelling to assess eco-evolutionary consequences of climate change (Schleuning et al., 2020), can contribute to
315 predicting the invasiveness of species (Nyberg and Wallentinus, 2005; Quell et al. 2021), be used in research
316 aiming to better understand the driving forces of evolutionary trait history (Heesch et al., 2021), or the mechanisms
317 of community assembly (Weiss and Ray, 2019), and can even help to assess ecosystem services vulnerability
318 (Díaz et al., 2013; Stevenson, 2014).

319 The AlgaeTraits database complements recent efforts to collect and publicly provide well-structured and organised
320 seaweed trait data. Just as MarLIN (2006) and SeaTraIn (2022) we focussed on biologically important traits. But
321 contrary to these other initiatives, AlgaeTraits includes all European seaweed species, and presents a different, yet
322 overlapping, set of traits. MarLIN (2006) covers over 40 traits, of which 12 overlap with AlgaeTraits, but is limited
323 to only 30 seaweed species. SeaTrain (2022) covers around 10 traits, of which two traits overlap with AlgaeTraits,
324 and includes 96 seaweed species. As to taxonomic coverage (1,742 species) and inclusion of functional important
325 traits as prioritised by Costello et al. (2015), AlgaeTraits is the most extensive seaweed trait database published
326 so far.

327 In this first version of AlgaeTraits, not all traits are available for all species yet, and the current list of traits is not
328 yet complete. For example, other key eco-evolutionary traits that might be considered to be included in the
329 database are ‘Tolerance to light’, ‘Tolerance to temperature’, ‘Tolerance to grazing’, ‘Tolerance to sedimentation’
330 or ‘Tolerance to epiphytism’. There is currently no possibility to describe parasitic algal life forms in the database,
331 ignoring a relatively diverse group of red algae. Completion and further refining and expanding the database will
332 be an ongoing effort of the AlgaeTraits editor community. AlgaeTraits currently has five thematic editors, who
333 actively update the trait information on a voluntary basis. During an upcoming workshop (December 2022), more
334 experts will be trained to contribute to AlgaeTraits through the online editing interface, and expansion of this
335 European database to a global level will be initiated. The AlgaeTraits editorial community will also need to report
336 to the WoRMS steering committee. As the database expands, adding new traits or trait values can be considered
337 under thorough consideration and discussion with the WoRMS steering committee and data management team.

338 For now, traits are included at the species level in AlgaeTraits. However, multiple traits can exhibit substantial
339 intraspecific variation (Kattge et al., 2011). For example, morphological seaweed traits can differ among
340 populations depending on underlying genetic patterns (Serisawa et al., 2003), or depending on environmental
341 conditions such as wave exposure with rather smaller and more slender individuals in exposed than sheltered
342 localities (Ruuskanen et al., 1999; Fowler-walker et al., 2006; Kim et al., 2022). But also, habitat preference, life-
343 history (Araújo et al., 2011) or life-cycle traits can vary intraspecifically. Some seaweeds reproduce sexually
344 under normal conditions but change to asexual reproduction under specific environmental conditions (Demes and
345 Graham, 2011; Murúa et al., 2017) or at the limits of their distribution (e.i. geographic parthenogenesis: Oppliger
346 et al., 2014; Hoshino et al., 2021). Intraspecific trait variation is thus caused by both genetic variation and
347 phenotypic plasticity and can be a response to improve performance under specific environmental biotic or abiotic
348 conditions (Kattge et al., 2011). At the moment, we considered intraspecific variation by assigning localities (or
349 life stages) to the trait values when possible, or specifying detailed information in the note field. However,
350 complementary approaches measuring trait information at specimen level (e.g., Mauffrey et al., 2020; Cappelatti
351 et al., 2019) are useful, especially for quantitative traits, to fully capture intraspecific trait variability and allow
352 more in-depth analysis.



353 **5. Data Availability**

354 The data can be accessed from the AlgaeTraits portal, algaetraits.org, doi: <https://doi.org/10.14284/574>
355 (AlgaeTraits, 2022).

356 **6. Conclusion**

357 We provided a consolidated database of important traits of European seaweeds that is distinct in its completeness
358 and taxonomic coverage. Because the database is standardised and fits within the broader framework of WoRMS
359 that aims to include all taxa described, it serves not only as a significant resource for phycological research
360 focusing on trait-based ecology or evolution, but also for general macro-ecological and macroevolutionary
361 research in general. The database can help to explore ecological questions about relations among traits or help to
362 unravel taxonomic and evolutionary patterns of traits in seaweeds. Because some trait values vary geographically
363 and some traits values were documented at the genus level, the database may not always provide the highest
364 variation at the species level. However, an active thematic editorial community is currently committed to further
365 updating and improving the quality of this European database and expanding it to a global level to facilitate
366 thorough and broad scale trait-based analysis.

367

368



369 **Author contribution:**

370 SV, MR, IBD, IB, AB, C-FB, CD, BDR, PD-T, AH, RJ, RK. PK, SAKH, RK, AFP, VP, CP-C, FB, FR, JR, HS,
371 IKS, MS, DS, TT, MVa, AV, MVe, CV, LL, FL and ODC contributed data. SV and MR collated the data and
372 performed quality control. SD, WD, BV, LV supported data curation. SV performed analysis and wrote the
373 original draft with help from MR, LV, LL, FL, ODC. All authors approved and contributed to the final draft for
374 submission.

375 **Competing interests**

376 The authors declare that they have no conflict of interest.

377 **Acknowledgements**

378 Authors Stefanie Dekeyzer, Wim Decock and Leen Vandepitte have been supported through the EMODnet
379 Biology project (MARE/2012/10/SI2.657705). This work makes use of data and/or infrastructure provided by
380 VLIZ and funded by Research Foundation - Flanders (FWO) as part of the Belgian contribution to LifeWatch.
381 This work used resources and facilities provided by UGent as part of the Belgian contribution to EMBRC-ERIC
382 (FWO GOH3817N and I001621N)

383

384



385 **References**

- 386 Åberg, P.: A demographic study of two populations of the seaweed *Ascophyllum nodosum*, *Ecology*, 73, 1473-
387 1487, <https://doi.org/10.2307/1940691>, 1992.
- 388 Albecker, M.A., Wilkins, L.G., Krueger-Hadfield, S.A., Bashevkin, S.M., Hahn, M.W., Hare, M.P., Kindsvater,
389 H.K., Sewell, M.A., Lotterhos, K.E. and Reitzel, A.M.: Does a complex life cycle affect adaptation to
390 environmental change? Genome-informed insights for characterizing selection across complex life cycle, *Proc.*
391 *Royal Soc. B*, 288, <https://doi.org/10.1098/rspb.2021.2122>, 2021.
- 392 Albouy, C., Delattre, V.L., Mérigot, B., Meynard, C.N., and Leprieur, F.: Multifaceted biodiversity hotspots of
393 marine mammals for conservation priorities. *Divers. Distrib.*, 23, 615-626, <https://doi.org/10.1111/ddi.12556>,
394 2017.
- 395 AlgaeTraits: a trait database for European seaweeds: <https://algaetraits.org>, <https://doi.org/10.14284/574>, last
396 access: 26 September 2022.
- 397 Appeltans, W., Ahyong, S.T., Anderson, G., Angel, M.V., Artois, T., Bailly, N., Bamber, R., Barber, A., Bartsch,
398 I., Berta, A., and Blazewicz-Paszkowycz, M.: The magnitude of global marine species diversity, *Current biology*,
399 22, 2189-2202, <https://doi.org/10.1016/j.cub.2012.09.036>, 2012.
- 400 Arenas, F., Sánchez, I., Hawkins, S. J., and Jenkins, S. R.: The invasibility of marine algal assemblages: role of
401 functional diversity and identity, *Ecology*, 87, 2851–2861, [https://doi.org/10.1890/0012-9658\(2006\)87\[2851:tiomaa\]2.0.co;2](https://doi.org/10.1890/0012-9658(2006)87[2851:tiomaa]2.0.co;2), 2006.
- 403 Araújo, R., Serrão, E.A., Sousa-Pinto, I. and Åberg, P.: Phenotypic differentiation at southern limit borders: the
404 case study of two furoid macroalgal species with different life-history traits, *J. Phycol.*, 47, 451-462,
405 <https://doi.org/10.1111/j.1529-8817.2011.00986.x>, 2011.
- 406 Balata, D., Piazzini, L., and Cinelli, F.: Increase of sedimentation in a subtidal system: effects on the structure and
407 diversity of macroalgal assemblages, *J. Exp. Mar. Bio. Ecol.*, 351, 73–82,
408 <https://doi.org/10.1016/j.jembe.2007.06.019>, 2007.
- 409 Beauchard, O., Veríssimo, H., Queirós, A. M., and Herman, P. M. J.: The use of multiple biological traits in
410 marine community ecology and its potential in ecological indicator development, *Ecol. Indic.*, 76, 81-96,
411 <https://doi.org/10.1016/j.ecolind.2017.01.011>, 2017.
- 412 Bell, G.: The comparative biology of the alternation of generations, in: *Lectures on mathematics in life sciences: The evolution of haplo-diploid life cycles*, edited by: Kirpatrick M., American Mathematical Society, Providence,
414 Rhode Island, 1–26, ISBN 0-8218-1176-2, 1994.
- 415 Benita, M., Dubinsky, Z., and Iluz, D.: *Padina pavonica*: morphology and calcification functions and mechanism.
416 *Am. J. Plant Sci*, 9, 1156-1168, <https://doi.org/10.4236/ajps.2018.96087>, 2018.
- 417 Beukeboom, L.W. and Perrin, N.: *The evolution of sex determination*. Oxford University Press, USA, ISBN 978-
418 0-19-965714-8, 2014.
- 419 Bremner, J.: Species' traits and ecological functioning in marine conservation and management, *J. Exp. Mar. Biol.*
420 *Ecol.*, 366, 37-47, <https://doi.org/10.1016/j.jembe.2008.07.007>, 2008.
- 421 Brodie, J.; Maggs, C. A.; John, D. M.: *Green Seaweeds of Britain and Ireland*. British Phycological Society, The
422 United Kingdom, 2007.



- 423 Cappelatti, L., Mauffrey, A.R., and Griffin, J.N.: Applying continuous functional traits to large brown macroalgae:
424 variation across tidal emersion and wave exposure gradients, *Mar. Biol.*, 166, 1-12,
425 <https://doi.org/10.1007/s00227-019-3574-5>, 2019.
- 426 Cardeccia, A., Marchini, A., Occhipinti-Ambrogu, A., Gali, I. B., Gollasch, S., Minchin, D., Narščiū, A., Olenin,
427 S., Ojaveer, H.: Assessing biological invasions in European Seas: Biological traits of the most widespread non-
428 indigenous species, *Estuar. Coast. Shelf Sci.*, 201, 17–28, <https://doi.org/10.1016/j.ecss.2016.02.014>, 2018.
- 429 Chapman, V. J. and Chapman, D. J.: Life forms in the algae, *Bot. Mar.*, 19, 65–74,
430 <https://doi.org/10.1515/botm.1976.19.2.65>, 1976.
- 431 Charlier, R.H., Morand, P., and Finkl, C.W.: How Brittany and Florida coasts cope with green tides. *Int. J.*
432 *Environ. Sci.*, 65, 191-208, <https://doi.org/10.1080/00207230701791448>, 2008.
- 433 Coelho, S. M., Scornet, D., Rousvoal, S., Peters, N. T., Dartevelle, L., Peters, A. F., and Cock, J. M.: Ectocarpus:
434 A model organism for the brown algae, *Cold Spring Harb. Protoc.*, 2, pdb.Emo065821,
435 <https://doi.org/10.1101/pdb.emo065821>, 2012.
- 436 Costello, M.J., Bouchet, P., Boxshall, G., Arvanitidis, C., and Appeltans, W.: European Register of Marine
437 Species. <http://www.marbef.org/data/erms.php>, last access: 29 april 2022.
- 438 Costello, M. J., Claus, S., Dekeyzer, S., Vandepitte, L., Tuama, E. O., Lear, D., and Tyler-Walters, H.: Biological
439 and ecological traits of marine species, *PeerJ*, 3, e1201, <https://doi.org/10.7717/peerj.1201>, 2015.
- 440 Degen, R., Aune, M., Bluhm, B. A., Cassidy, C., Kędra, M., Kraan, C., Vandepitte, L., Włodarska-Kowalczyk,
441 M., Zhulay, I., and Albano, P. G.: Trait-based approaches in rapidly changing ecosystems: A roadmap to the future
442 polar oceans, *Ecol. Indic.*, 91, 722-736, <https://doi.org/722-736>.doi:10.1016/j.ecolind.2018.04.050, 2018.
- 443 Demes, K.W. and Graham, M.H.: Abiotic regulation of investment in sexual versus vegetative reproduction in the
444 clonal kelp *Laminaria Sinclairii* (laminariales, Phaeophyceae), *J. Phycol.*, 47, 463-470,
445 <https://doi.org/10.1111/j.1529-8817.2011.00981.x>, 2011.
- 446 Destombe, C., Valero, M., Vernet, P. and Couvet, D.: What controls haploid-diploid ratio in the red alga,
447 *Gracilaria verrucosa*?, *J. Evol. Biol.*, 2, 317-338, <https://doi.org/10.1046/j.1420-9101.1989.2050317.x>, 1989.
- 448 De Wreede, R.E., and Klingler, T.: Reproductive strategies in algae, in: *Plant reproductive ecology: patterns and*
449 *strategies*, edited by: Doust, J. L., and Doust, J. J., Oxford University Press, New York, 267-284, ISBN 0-19-
450 505175-0, 1988.
- 451 Díaz, S., Purvis, A., Cornelissen, J.H., Mace, G.M., Donoghue, M.J., Ewers, R.M., Jordano, P., and Pearse, W.D.:
452 Functional traits, the phylogeny of function, and ecosystem service vulnerability. *Ecol. Evol.*, 3, 2958-2975,
453 <https://doi.org/10.1002/ece3.601>, 2013.
- 454 Engel, C., Åberg, P., Gaggiotti, O.E., Destombe, C., and Valero, M.: Population dynamics and stage structure in
455 a haploid-diploid red seaweed, *Gracilaria gracilis*. *J. Ecol.*, 436-450, <https://doi.org/10.1046/j.1365-2745.2001.00567.x>, 2001.
- 457 Esmaili, Y. S., Corte, G.N., Checon, H. H., Bilatto, C.G., Lefcheck, J. S., Zacagnini Amaral, A. C., and Turra,
458 A.: Revealing the drivers of taxonomic and functional diversity of nearshore fish assemblages: Implications for
459 conservation priorities, *Divers. Distrib.*, 28, 1597-1609, <https://doi.org/10.1111/ddi.13453>, 22.
- 460 Feldmann, J.: Les types biologiques d'algues marines benthiques, *Bull. la Société Bot. Fr.*, 113, 45-60,
461 <https://doi.org/10.1080/00378941.1966.10838473>, 1966.



- 462 Fowler-Walker, M. J., Wernberg, T., and Connell S. D.: Differences in kelp morphology between wave sheltered
463 and exposed localities: morphologically plastic or fixed traits?, *Mar. Biol.*, 148, 755-767,
464 <https://doi.org/10.1007/s00227-005-0125-z>, 2006.
- 465 Gaspar, R., Pereira, L., and Neto, J.M.: Intertidal zonation and latitudinal gradients on macroalgal assemblages:
466 Species, functional groups and thallus morphology approaches, *Ecol. Indic.*, 81, 90-103,
467 <https://doi.org/10.1016/j.ecolind.2017.05.060>, 2017.
- 468 Gómez, I. and Huovinen, P.: Form and Function in Antarctic Seaweeds: Photobiological Adaptations, Zonation
469 Patterns, and Ecosystem Feedbacks, in: *Antarctic Seaweeds*, edited by: Gómez, I., and Huovinen, P., Springer,
470 Cham, 217–237, https://doi.org/10.1007/978-3-030-39448-6_11, 2020.
- 471 Gómez, I., Navarro, N.P., and Huovinen, P.: Bio-optical and physiological patterns in Antarctic seaweeds: a
472 functional trait based approach to characterize vertical zonation. *Prog. Oceanogr.*, 174, 17-27,
473 <https://doi.org/10.1016/j.pocean.2018.03.013>, 2019.
- 474 Guiry, M.D.: How many species of algae are there?, *J. Phycol.*, 48, 1057-1063, <https://doi.org/10.1111/j.1529-8817.2012.01222.x>, 2012.
- 476 Guiry, M.D. and Guiry, G.M.: *AlgaeBase*: <https://www.algaebase.org/>, last access: 2 May 2022
- 477 Heesch, S., Serrano-Serrano, M., Barrera-Redondo, J., Luthringer, R., Peters, A.F., Destombe, C., Cock, J.M.,
478 Valero, M., Roze, D., Salamin, N., and Coelho, S.M.: Evolution of life cycles and reproductive traits: insights
479 from the brown algae. *J. Evol. Biol.*, 34, 992-1009, <https://doi.org/10.1111/jeb.13880>, 2021.
- 480 Hiruta, S. F., Croce, E. M., Kamiya, M., Jomori, T., Wakimoto, T., and Kogame, K.: Geographical
481 parthenogenesis in the brown alga *Scytosiphon lomentaria* (Scytosiphonaceae): Sexuals in warm waters and
482 parthenogens in cold waters. *Mol. Ecol.*, 30, 5814-5830. <https://doi.org/10.1111/mec.16152>, 2021.
- 483 Kattge, J., Ogle, K., Bönnisch, G., Díaz, S., Lavorel, S., Madin, J., Nadrowski, K., Nöllert, S., Sartor, K., and Wirth,
484 C.: A generic structure for plant trait databases, *Methods Ecol. Evol.*, 2, 202-213, <https://doi.org/10.1111/j.2041-210X.2010.00067.x>, 2011.
- 486 Kim, S., Choi, S.K., Van, S., Kim, S.T., Kang, Y.H., and Park, S.R.: Geographic differentiation of morphological
487 characteristics in the brown seaweed *Sargassum thunbergii* along the Korean coast: A Response to Local
488 Environmental Conditions. *J. Mar. Sci. Eng.*, 10, 2-15, <https://doi.org/10.3390/jmse10040549>, 2022.
- 489 Lavaut, E., Guillemain, M.-L., Colin, S., Faure, A., Coudret, J., Destombe, C., and Valero, M.: Pollinators of the
490 sea: A discovery of animal-mediated fertilization in seaweed, *Science*, 377, 528-530, <https://doi.org/10.1126/science.abo6661>, 2022.
- 492 Lawrence, E.: *Henderson's dictionary of Biology*, 13th edition, Pearson Education Limited, London, United
493 Kingdom, 2005.
- 494 Lincoln, R.J., Boxshall, G.A., Clark, P.F.: *Dictionary of ecology, evolution and systematics*, 2nd ed, Cambridge,
495 Cambridge University Press, 1998.
- 496 Littler, M. M. and Littler, D. S.: The evolution of thallus form and survival strategies in benthic marine
497 macroalgae: field and laboratory tests of functional form model, *Am. Nat.*, 116, 25-44,
498 <https://doi.org/10.1086/283610>, 1980.
- 499 Littler, M. M., Littler, D. S., and Taylor P. R.: Evolutionary strategies in a tropical barrier reef system: functionale
500 from groups of marine macroalgae, *J. Phycol.*, 19, 229–237, <https://doi.org/10.1111/j.0022-3646.1983.00229.x>,
501 1983.



- 502 Lüning, K.: Seaweeds: their environment, biogeography, and ecophysiology, John Wiley & Sons, 1991.
- 503 Nyberg, C. and Wallentinus, I.: Can species traits be used to predict macroalgal introductions ?, *Biol. Invasions*,
504 7, 265–279, <https://doi.org/10.1007/s10530-004-0738-z>, 2005.
- 505 Maggs, C. A.: Intraspecific life history variability in the Florideophycidae (Rhodophyta), *Bot. Mar.*, 31, 465-490,
506 <https://doi.org/10.1515/botm.1988.31.6.465>, 1988.
- 507 Maggs, C. A. and Hommersand, M. H.: Seaweeds of the British Isles Volume 1 Rhodophyta Part 3A Ceramiales,
508 The Natural History Museum, London, The United Kingdom, 1993.
- 509 Marine Species Traits: <https://www.marinespecies.org/traits>, last access: 25 August 2022.
- 510 MarLIN: BIOTIC - Biological Traits Information Catalogue, Marine Life Information Network, Plymouth,
511 Marine Biological Association of the United Kingdom, <https://www.marlin.ac.uk/biotic>, last access: 31 August
512 2022, 2006.
- 513 Martini, S., Larras, F., Boyé, A., Faure, E., Aberle, N., Archambault, P., Bacouillard, L., Beisner, B.E., Bittner,
514 L., Castella, E., Danger, M., Gauthier, O., Karp-Boss, L., Lombard, F., Maps, F., Stemmann, L., Thiébaud, E.,
515 Usseglio-Polatera, P., Vogt, M., Laviale, M., and Ayata, S.-D.: Functional trait-based approaches as a common
516 framework for aquatic ecologists. *Limnol Oceanogr*, 66, 965-994, <https://doi.org/10.1002/lno.11655>, 2021.
- 517 Mauffrey, A. R. L., Cappelatti, L., Griffin, J. N.: Seaweed functional diversity revisited: confronting traditional
518 groups with quantitative traits. *J. Ecol.*, 3, 2390-2405, <https://doi.org/10.1111/1365-2745.13460>, 2020
- 519 McGill, B. J., Enquist, B. J., Weiher, E., and Westoby, M.: Rebuilding community ecology from functional
520 traits, *Trends Ecol. Evol.*, 21, 178–185, <https://doi.org/10.1016/j.tree.2006.02.002>, 2006.
- 521 Murúa, P., Müller, D. G., Patiño, D. J., and Westermeier, R.: Giant kelp vegetative propagation: Adventitious
522 holdfast elements rejuvenate senescent individuals of the *Macrocystis pyrifera* “*integrifolia*” ecomorph, *J. Phycol.*,
523 53, 230-234, <https://doi.org/10.1111/jpy.12493>, 2017.
- 524 Oppliger, L.V., Von Dassow, P., Bouchemousse, S., Robuchon, M., Valero, M., Correa, J.A., Mauger, S., and
525 Destombe, C.: Alteration of sexual reproduction and genetic diversity in the kelp species *Laminaria digitata*
526 at the southern limit of its range. *PLoS One*, 9, e102518, <https://doi.org/10.1371/journal.pone.0102518>, 2014.
- 527 Orfanidis, S., Panayotidis, P., and Ugland, K. I.: Ecological Evaluation Index continuous formula (EEI-c)
528 application: a step forward for functional groups, the formula and reference condition values, *Mediterr. Mar. Sci.*,
529 12, 199–231, <https://doi.org/10.12681/mms.60>, 2011.
- 530 Pentecost, A.: Calcification in plants. In *International Review of Cytology*, 62, 1-27. Academic Press,
531 [https://doi.org/10.1016/S0074-7696\(08\)61897-5](https://doi.org/10.1016/S0074-7696(08)61897-5), 1980.
- 532 Pierucci, A., De La Fuente, G., Cannas, R., Chiantore, M.: A new record of the invasive seaweed *Caulerpa*
533 *cylindracea* Sonder in the South Adriatic Sea, *Heliyon*, 5, e02449, <https://doi.org/10.1016/j.heliyon.2019.e02449>,
534 2019.
- 535 Quell, F., Schratzberger, M., Beauchard, O., Bruggeman, J., and Webb, T.: Biological trait profiles discriminate
536 between native and non-indigenous marine invertebrates, *Aquat. Invasions*, 16, 571–600,
537 <https://doi.org/10.3391/ai.2021.16.4.01>, 2021.
- 538 Ruuskanen, A., Bäck, S., Reitalu, T.: A comparison of two cartographic exposure methods using *Fucus*
539 *vesiculosus* as an indicator. *Mar Biol*, 134, 139-145, <https://doi.org/10.1007/s002270050532>, 1999.



- 540 Ryznar, E.R., Fong, P., and Fong, C.R.: When form does not predict function: Empirical evidence violates
541 functional form hypotheses for marine macroalgae, *Journal of Ecology*, 109, 833-846,
542 <https://doi.org/10.1111/1365-2745.13509>, 2020.
- 543 SeaTraIn: <https://seaweedtraits.github.io/>, last access: 31 August 2022.
- 544 Serisawa, Y., Aoki, M., Hirata, T., Bellgrove, A., Kurashima, A., Tsuchiya, Y., Sato, T., Ueda, H. and Yokohama,
545 Y.: Growth and survival rates of large-type sporophytes of *Ecklonia cava* transplanted to a growth environment
546 with small-type sporophytes. *J. Appl. Phycol.*, 15, 311–318, <https://doi.org/10.1023/A:1025183100958>, 2003.
- 547 Smetacek, V. and Zingone, A.: Green and golden seaweed tides on the rise, *Nature*, 504(7478), 84-88,
548 <https://doi.org/10.1038/nature12860>, 2013.
- 549 Spalding, M. D., Fox, H. E., Allen, G.R., Davidson, N., Ferdaña, Z.A., Finlayson, M. A. X., Halpern, B.S., Jorge,
550 M. A., Lombana, A. L., Lourie, S. A., and Martin, K. D.: Marine ecoregions of the world: a bioregionalization of
551 coastal and shelf areas, *BioScience*, 57, 573-583, <https://doi.org/10.1641/B570707>, 2007.
- 552 Steneck, R. S. and Dethier, M. N.: A functional group approach to the structure of algal-dominated communities,
553 *Oikos*, 69, 476–498, <https://doi.org/10.2307/3545860>, 1994.
- 554 Stevenson, J.: Ecological assessments with algae: a review and synthesis. *Journal of Phycology*, 50, 437-461,
555 <https://doi.org/10.1111/jpy.12189>, 2014.
- 556 Schleuning, M., Neuschulz, E.L., Albrecht, J., Bender, I.M., Bowler, D.E., Dehling, D.M., Fritz, S.A., Hof, C.,
557 Mueller, T., Nowak, L., and Sorensen, M.C.: Trait-based assessments of climate-change impacts on interacting
558 species, *Trends in Ecol. & Evol.*, 35, 319-328, <https://doi.org/10.1016/j.tree.2019.12.010>, 2020.
- 559 Vandepitte, L., Vanhoorne, B., Decock, W., Dekeyzer, S., Trias Verbeeck, A., Bovit, L., Hernandez, F., Mees, J.:
560 How Aphia - the platform behind several online and taxonomically oriented databases - can serve both the
561 taxonomic community and the field of biodiversity informatics, *J. Mar. Sci. Eng.*, 3, 1448-1473,
562 <https://hdl.handle.net/10.3390/jmse3041448>, 2015.
- 563 Vandepitte, L., Vanhoorne, B., Decock, W., Vranken, S., Lanssens, T., Dekeyzer, S., Verfaille, K., Horton, T.,
564 Kroh, A., Hernandez, F., and Mees, J.: A decade of the World Register of Marine Species—General insights and
565 experiences from the Data Management Team: Where are we, what have we learned and how can we continue?,
566 *PLoS One*, 13, <https://doi.org/10.1371/journal.pone.0194599>, 2018.
- 567 Veiga, P., Rubal, M., Vieira, R., Arenas, F., Sousa-Pinto, I.: Spatial variability in intertidal macroalgal
568 assemblages on the North Portuguese coast: consistence between species and functional group approaches,
569 *Helgol. Mar. Res.*, 67, 191–201, <https://doi.org/10.1007/s10152-012-0315-2>, 2013.
- 570 Vélez-Rubio, G.M., González-Etchebehere, L., Scarabino, F., Trinchin, R., Manta, G., Laporta, M., Zabaleta, M.,
571 Vidal, V., de Leon-Mackey, A. and Kruk, C.: Macroalgae morpho-functional groups in Southern marine
572 ecosystems: rocky intertidal in the Southwestern Atlantic (33°–35° S), *Marine Biology*, 168, 1-21,
573 <https://doi.org/10.1007/s00227-021-03960-6>, 2021.
- 574 Violle, C., Navas, M. L., Vile, D., Kazakou, E., Fortunel, C., Hummel, I., and Garnier, E.: Let the concept of trait
575 be functional!, *Oikos*, 116, 882-892, <https://doi.org/10.1111/j.0030-1299.2007.15559.x>, 2007.
- 576 Voultziadou, E., Gerovasileiou, V., Vandepitte, L., Gantias, K., and Arvanitidis, C.: Aristotle’s scientific
577 contributions to the classification, nomenclature and distribution of marine organisms, *Mediterr. Mar. Sci.*, 18,
578 468-478, <https://doi.org/10.12681/mms.13874>, 2017.



- 579 Weiss, K.C. and Ray, C.A.: Unifying functional trait approaches to understand the assemblage of ecological
580 communities: synthesizing taxonomic divides, *Ecography*, 42, 2012-2020, <https://doi.org/10.1111/ecog.04387>,
581 2019.
- 582 Wichard, T., Charrier, B., Mineur, F., Bothwell, J.H., Clerck, O.D., and Coates, J.C.: The green seaweed *Ulva*: a
583 model system to study morphogenesis, *Front. Plant Sci.*, 6, 72, <https://doi.org/10.3389/fpls.2015.00072>, 2015.
- 584 Wieters, E. A., McQuaid, C., Palomo, G., Pappalardo, P., and Navarrete, S. A.: Biogeographical boundaries,
585 functional group structure and diversity of rocky shore communities along the Argentinean coast, *PLoS One*, 7,
586 e49725, <https://doi.org/10.1371/journal.pone.0049725>, 2012.
- 587 Womersley, H.B.S.: The marine benthic flora of southern Australia. Part I: Chlorophyta. Woolman, Government
588 Printer, Adelaide, South Australia, 1984.
- 589 Womersley, H. B. S.: The marine benthic flora of southern Australia, Part II, Australian Government Printing
590 Division, Adelaide, South Australia, pp. 481, 1987.
- 591 WoRMS: World Register of Marine Species: <https://www.marinespecies.org>, last access: 25 August 2022.
592



593 **Appendix A**

594 **Table A1 Trait definitions as applied in AlgaeTraits. When no reference is provided, definitions are created by the**
 595 **authors.**

Trait group	Trait	Trait value	Trait child value	Definition
Ecology	Distribution*		/	Species distributions documented as georegions. See www.MarineRegions.org for the full list of georegions.
	Environmental position	Endolithic	/	Growing within a rock or other hard inorganic or organic substratum (Lincoln et al., 1998).
		Endophytic	/	Living within a plant tissue or macroalgal thallus and not deriving nourishment from it.
		Endozoic	/	Living within or passing through the body of an animal and not deriving nourishment from it.
		Epilithic	/	Growing on rocks or other hard inorganic or organic substrata (Lincoln et al., 1998).
		Epiphytic	/	Living on the surface of a plant or alga and not deriving nourishment from it.
		Epipsammic	/	growing in or on sand or other soft inorganic or organic substratum
		Epizoic	/	Living attached to the body of an animal used for a non-parasitic organism that lives attached to the outer surface of an animal.
		Unattached	/	Growing without attachment to any type of substrate.
		Environment*	Marine	/
Brackish	/		Occuring at a salinity range of 0.5–30 ppt	
Freshwater	/		Occuring at a salinity range of 0–0.5 ppt	
Terrestrial	/		Occuring on land	
Macroalgal Blooming	Yes	/	The species has the potential to go through episodes of intense thallus growth, reproduction and mass proliferation under specific environmental conditions such as high nutrient and temperature conditions	
	No	/	The species does not have the obvious potential to go through episodes of intense growth and mass proliferation of the	



Trait group	Trait	Trait value	Trait child value	Definition
				thallus under specific environmental conditions such as high nutrient and temperature conditions
Seasonality		Spring	/	The organism can be observed in spring.
		Summer	/	The organism can be observed in summer.
		Autumn	/	The organism can be observed in autumn.
		Winter	/	The organism can be observed in winter.
		Unreported	/	Seasonality not reported in the literature.
Wave exposure		Exposed	/	Occurring in habitats that are subject to high energy wave forces.
		Exposed	High energy rock	Occurring on rocky substrate subject to high energy wave forces.
		Features of rock	/	Specific characteristics of rocky substrate such as pools, caves, overhangs, surge gulleys, artificial hard substrata.
		Semi-exposed	/	Occurring in habitats that are subject to moderate energy wave forces.
		Semi-exposed	Moderate energy rock	Occurring on rocky substrate subject to moderate energy wave forces.
		Sheltered	/	Occurring in habitats that are subject to low energy wave forces.
		Sheltered	Coarse sediments	Occurring on coarse sediments such as gravel, pebbles, shingles and cobbles occurring at sheltered locations.
		Sheltered	Low energy rock	Occurring on rocky substrate subject to low energy wave forces.
		Sheltered	Macrophyte-dominated sediments	Sediments with a high cover of macroalgae or seagrasses.
		Sheltered	Mud-dominated sediments	Sediments composed of a mixture of clay (< 2 µm) and silt (4 - 62 µm) typically deposited in a low energy environment.
Sheltered		Sand-dominated sediments	Sediments composed of a mixture of sand particles (0.074 - 4.75 mm) typically deposited in a low energy environment.	
		Unreported	/	Not been reported in literature in what type of wave exposure the species occurs.



Trait group	Trait	Trait value	Trait child value	Definition
Tolerance to organic pollutants		Clear waters	/	Occurring in waters where visibility is most of the time > 10 m.
		Eutrophic waters	/	Occurring in waters with high primary productivity; pertaining to waters rich in nutrients.
		Mesotrophic waters	/	Occurring in waters with intermediate levels of primary productivity; pertaining to waters having intermediate levels of the nutrients.
		Moderately turbid waters	/	Occurring in waters where visibility is most of the time > 1m and < 10m.
		Oligotrophic waters	/	Pertaining to waters with low levels of the nutrients resulting in low primary net productivity.
Vertical space use		Turbid waters	/	Occurring in waters where visibility is most of the time < 1m
		Water with variable turbidity	/	Occurring in waters where turbidity varies periodically.
		Canopy	/	Vegetation of macroalgae or plants partially blocking light penetration, thereby creating a shaded understory.
Zonation		Encrusting	/	With a crustose growth form
		Sub-canopy	/	Forming a secondary cover, usually of 20 cm height maximum
		Turf	/	Vegetation dominated by macroalgae with limited vertical height, usually < 5 cm height
		Intertidal	/	The part of the shore between high and low tide.
			Littoral zone	
		Subtidal	/	The part of the shore continuously covered by water, below the intertidal zone.



Trait group	Trait	Trait value	Trait value	child value	Definition
			Lower infralittoral zone		The part of the infralittoral zone that supports scattered kelp plants.
			Upper circalittoral zone		Dominated by animals with sparse foliose algae except where grazed. The part of the circalittoral subzone on hard substrata distinguished by the presence of scattered foliose algae amongst the dominating animals; its lower limit is the maximum limit of depth for foliose algae
			Upper infralittoral zone		The region of the sublittoral which extends from the lower limit of the infralittoral to the maximum depth at which photosynthesis is still possible.
		Unreported	/		unreported
Morphology	Body shape	Branched	/		Forming main and lateral branches (and branchlets).
		Capitate	/		(1) Enlarged or swollen at tip; (2) Gathered into a mass at tip or apex.
		Crustose	/		Forming a thin crust on the substratum, appl. certain lichens, sponges, algae (Lawrence, 2005).
		Cushion-like	/		Approximating the shape of a cushion (Womersley, 1987).
		Discoid	/		(1) Flat and circular; (2) Disc-shaped (Lawrence, 2005).
		Erect	/		Upright.
		Filamentous	/		Existing out of a branched or unbranched row of cells joined end to end (Womersley, 1987).
		Filiform	/		resembling a filament.
		Flabellate	/		Fan-shaped, thallus usually expanding upward from a narrow base.
		Foliose	/		Leaf-like (Womersley, 1987).
		Mucilaginous	/		consisting of a slippery and slimy texture (Maggs and Hommersand, 1993)



Trait group	Trait	Trait value	Trait child value	Definition
		Pinnate	/	With laterals or branches arranged along each side of an axis or branch (Womersley, 1987).
		Prostrate	/	Trailing on the ground or lying closely along a surface (Lawrence, 2005).
		Saccate	/	Inflated, or sac-like (Womersley, 1987).
		Siphonous	/	An algal growth form that is filamentous, tubular, multinucleate and with a few cross-walls, if any (Brodie et al., 2007).
		Spheric	/	Approximating the shape of a sphere (Womersley, 1987).
		Stoloniferous	/	forming a prostrate axis, lying on or in the substrate, from which erect branches arise (Womersley, 1984).
		Tubular	/	In the form of a tube, having tubes, consisting of tubes (Lawrence, 2005).
		Unreported	/	So far it has not been reported in literature what the body shape (thallus) is for this taxon.
	Body Size	[numerical value]	/	A measurement of the size of the organism. The measurement used to express body size varies within taxonomic groups. For example, some disciplines measure diameter, others carapace length, total body length or wingspan. Also, body size can vary with gender and life stage.
	Calcification	Calcified articulated	/	Algal thallus that is encrusted or impregnated with lime with non-calcified articulae rendering the thallus a segmented nature.
		Calcified non-articulated	/	Algal thallus that is encrusted or impregnated with lime lacking non-calcified articulae.
		Non-calcified	/	Algal thallus not encrusted or impregnated with lime.
		Unreported	/	So far it has not been reported in literature whether the thallus is calcified.



Trait group	Trait	Trait value	Trait value	child value	Definition
	Cytomorphology	Unicellular	/		Having only one cell or consisting of one cell.
		Unicellular	siphonous		An algal growth form that is filamentous, tubular, multinucleate and with a few cross-walls, if any (Brodie et al., 2007).
		Non-unicellular			Having more than one cell or consisting of more than one cell (adapted from Lawrence, 2005).
		Non-unicellular	coenocytic		With cells being multinucleate.
Life History	Asexual reproduction	Asexual reproduction	/		Reproduction which does not involve fusion of gametes or meiosis and usually results in progeny with an identical genetic constitution to the parent and to each other. Asexual reproduction may amongst others occur by binary fission, budding, asexual spore formation or vegetative propagation.
		Asexual reproduction	Asexual reproduction by an unknown mechanism		Asexual reproduction is detected, but the underpinning mechanism is unknown.
		Asexual reproduction	Asexual reproduction by direct development of spores		Reproduction by asexual spores resulting in a new individual of the same ploidy (exospore, endospore, monospore, bispore, paraspore, zoospore, aplanospore, autospore).
		Asexual reproduction	Asexual reproduction by fragmentation		Type of asexual reproduction in which the organism breaks up into smaller pieces, each of which can develop into a new individual, as in some algae (Lawrence, 2005).
		Asexual reproduction	Asexual reproduction by parthenogenesis		Direct development of a new individual from an unfused gamete.



Trait group	Trait	Trait value	Trait child value	Definition
		Asexual reproduction	Asexual reproduction by vegetative propagules	Asexual reproduction by development of a new individual from a vegetative propagule.
		No asexual reproduction	/	The taxon does not reproduce asexually, which is reproduction which does not involve formation and fusion of gametes and results in progeny with an identical genetic constitution to the parent and to each other. Reproduction may occur by binary fission, budding, asexual spore formation or vegetative propagation. In asexual division in eukaryotic organisms, all cell divisions are by mitosis.
		Unknown	/	According to literature it is unknown whether this organism reproduces asexually.
Dispersion mode		Aplanospores	/	A non-motile, asexual spore.
		Monospores	/	An undivided spore.
		Motile spores	/	Spores are flagellate and can therefore disperse.
		One motile gamete	/	Only the male gamete is flagellate and can therefore disperse.
		Two motile gametes	/	Both male and female gametes are flagellate and can therefore disperse.
		Vegetative fragmentation	/	Type of asexual reproduction in which the organism breaks up into smaller pieces, each of which can develop into a new individual.
		Vegetative fragmentation	Thallus fragmentation and drift	A part of the thallus can be lost and drift.



Trait group	Trait	Trait value	Trait child value	Definition
		Vegetative propagation	/	Vegetative reproduction by propagules that can also be used as a means of dispersal.
		Presence of buoyancy structures	/	Individuals exhibit gas-filled structures that favourise their floating.
		Species cultivated or sold in aquaria trade	/	The species is cultivated or sold in aquaria trade.
		Species growing on artificial substrate	/	The species is growing on artificial substrate such as harbour walls, boat hulls, piers, buoys.
		Unknown	/	According to literature it is unknown which dispersion mode this organism has.
		Unreported	/	So far it has not been reported in literature which dispersion mode this taxon has.
	Gamete type	Anisogamous	/	Having gametes of dissimilar size, shape or behaviour (Lincoln et al., 1998).
		Isogamous	/	Having gametes that are similar in size, shape and behaviour; having gametes (isogametes) not differentiated into male and female (Lincoln et al., 1998).
		Oogamous	/	Having a reproduction involving a large, non-motile female gamete (egg cell) and a small, motile male gamete (sperm cell or equivalent), except for red algae in which the male gamete is also non-motile (Womersley, 1987).
		Not applicable	/	The attribute "gamete type" is not applicable for this taxon.
		Unknown	/	According to literature it is unknown which gamete type this organism has.
		Unreported	/	So far it has not been reported in literature what the gamete type is for this taxon.



Trait group	Trait	Trait value	Trait child value	Definition
Gametophyte arrangement		Dioecious	/	When male and female reproductive structures are formed on the separate individual and the sex is determined in diploid phase.
		Dioicous	/	When male and female reproductive structures are formed on the separate individual and the sex is determined in haploid phase (Beukeboom and Perrin, 2014).
		Mixed	/	With individuals bearing only male or female reproductive structures and individuals bearing both male and female reproductive structures in one species.
		Monoecious	/	When male and female reproductive structures are formed on same individuals and the sex is determined in diploid phase.
		Monoicous	/	When male and female reproductive structures are formed on same individuals and the sex is determined in haploid phase.
		Not applicable	/	The attribute "gametophyte arrangement" is not applicable for this taxon.
		Unknown	/	According to literature it is unknown which gametophyte arrangement this organism has.
Generation time		Unreported	/	So far it has not been reported in literature what the gametophyte arrangement is for this taxon.
		1 to 3 months	/	Life cycle completed in 1 to 3 months in the lab.
		3 to 12 months	/	Life cycle completed in 3 to 12 months in the lab.
		1 to 3 years	/	Life cycle completed in 1 to 3 years in the lab.
Life cycle		More than 3 years	/	Life cycle completed in more than 3 years in the lab.
		Diplontic	/	Having a life cycle in which the direct products of meiosis act as gametes; only



Trait group	Trait	Trait value	Trait child value	Definition
				the gametes are haploid (Lincoln et al., 1998).
		Haplodiplontic	/	Having a life cycle with alternating free-living gametophyte and sporophyte phases (Womersley, 1987).
		Haplodiplontic	Heteromorphic	Organisms with the gametophyte and sporophyte of different morphology and size (Womersley, 1987).
		Haplodiplontic	Isomorphic	Organisms with the gametophyte and sporophyte of similar morphology and size (Womersley, 1987).
		Haplodiplontic	Not applicable	It is not applicable whether this taxon is heteromorphic or isomorphic.
		Haplodiplontic	Unknown	According to literature it is unknown whether this organism is heteromorphic or isomorphic.
		Haplodiplontic	Unreported	So far it has not been reported in literature whether this taxon is heteromorphic or isomorphic.
		Haplontic	/	Having a life cycle in which meiosis occurs in the zygote to produce the haploid phase; only the zygote is diploid (Lincoln et al., 1998).
		Unknown	/	According to literature it is unknown what life cycle this organism has.
		Unreported	/	So far it has not been reported in literature what life cycle this taxon has.
	Life span	Annual	/	(1) Appl. structures or growth features that are marked off or completed yearly; (2) living for a year only; (3) completing life cycle in a year from germination; (4) n. plant that completes its life cycle in a year. (Lawrence, 2005). Thallus which survives only one growing season (less than 1 year) (Womersley, 1987).



Trait group	Trait	Trait value	Trait child value	Definition
		Annual	Ephemeral	(1) Short-lived; (2) taking place once only, appl. plant movements as expanding buds; (3) completing life cycle within a brief period; (4) n. a short-lived plant or animal species (Lawrence, 2005). Thallus which survives for only a few weeks (less than 1 month) (Womersley, 1987).
		Perennial	/	Plant which persists for several years (Lawrence, 2005).
		Perennial	Long perennial	Thallus or part thereof with a lifespan exceeding 3 years (more than 3 years)
		Perennial	Short perennial	Thallus or part thereof with a lifespan exceeding 1 year but under 3 years.
		Unreported	/	So far it has not been reported in literature which life span this organism has.
	Reproductive frequency	Throughout the year	/	Fertile individuals observed throughout the year.
		One long period a year	/	A unique fertility period lasting more than 1 month.
		One short period a year	/	A unique fertility period lasting less than 1 month.
		Several long periods a year	/	Several distinct fertility periods lasting more than 1 month each.
		Several short periods a year	/	Several distinct fertility periods lasting less than 1 month each.
	Spawning	Fertilization in the water column	/	Fertilization with gametes released in the water column.
		Fertilization on the female gametophyte	/	Female gamete retained on the female gametophyte (e.g. Rhodophyta).
		Not applicable	/	The attribute "spawning" is not applicable for this taxon.
		Unknown	/	According to literature it is unknown which spawning mechanism this organism has.
		Unreported	/	So far it has not been reported in literature whether there is spawning for this taxon.



596 *Not uploaded as traits or attributes in the Aphia database but as Distributions or Environmental flags
597
598



599 **Appendix B**

600 **Table B1. Sources used in the database, ordered from most to least used.**

Type	Source
literature	Bunker, F., Brodie, J. A., Maggs, C. A., & Bunker, A. R. (2017). <i>Seaweeds of Britain and Ireland</i> . Princeton University Press.
expert	Blanfuné, Aurélie. Institut Méditerranéen d'Océanologie. aurelie.blanfunethibaut@mio.osupytheas.fr; Boudouresque, Charles-François. Institut Méditerranéen d'Océanologie. charles.boudouresque@mio.osupytheas.fr; Thibaut, Thierry. Institut Méditerranéen d'Océanologie. thierry.thibaut@mio.osupytheas.fr; Verlaque, Marc. Institut Méditerranéen d'Océanologie. marc.verlaque@mio.osupytheas.fr
expert	Rueness, Jan. University of Oslo. jan.rueness@ibv.uio.no
literature	Rodriguez-Prieto, C.; Ballesteros, E.; Boisset, F.; Afonso-Carrillo, J. (2013). <i>Guía de las macroalgas y fanerógamas marinas del Mediterráneo occidental</i> . Ediciones Omega. S.A., Barcelona.
expert	Krueger-Hadfield, Stacy A. University of Alabama at Birmingham. sakh@uab.edu
expert	Peña, Viviana. Universidad A Coruña. vpena@udc.es
expert	Criado, Ignacio Bárbara. Universidad A Coruña. barbara@udc.es
expert	Piñeiro-Corbeira, Cristina. Universidad A Coruña. c.pcorbeira@udc.es
literature	Guiry, M.D. & Guiry, G.M. (2022). <i>AlgaeBase</i> . World-wide electronic publication, National University of Ireland, Galway. searched on YYYY-MM-DD.
expert	Le Gall, Line. Muséum National d'Histoire Naturelle. legall@mnhn.fr
expert	Kersen, Priit. Agriculture and Food Board. priit.kersen@gmail.com
expert	Leliaert, Frederik.
expert	Díaz-Tapia, Pilar. Universidad A Coruña. pdiaz@udc.es
expert	Sjötun, Inga Kjersti. University of Bergen. Kjersti.Sjotun@bio.uib.no
literature	Brodie, J.; Maggs, C. A.; John, D. M. (2007). <i>Green Seaweeds of Britain and Ireland</i> . British Phycological Society.
expert	Smale, Dan. Marine Biological Association. dansma@MBA.ac.uk
literature	Maggs, C. A.; Hommersand, M. H. (1993). <i>Seaweeds of the British Isles Volume 1 Rhodophyta Part 3A Ceramiales</i> . British Museum (Natural History).
expert	de Reviere, Bruno. Muséum National d'Histoire Naturelle. reviers@mnhn.fr
expert	Vergés, Alba. Universitat de Girona. alba.verges@udg.edu
expert	De Clerck, Olivier.



Type	Source
literature	Dixon, P. S. I. L. M. (1977). Seaweeds of the British Islands, vol. 1, Rhodophyta. British Museum, London.
literature	Fletcher, R. L. (1987). Seaweeds of the British Isles: Volume 3. Part 1 Fucophyceae (Phaeophyceae). Natural History Museum: London. ISBN 0-11-310003-5. 359 pp.
expert	Rindi, Fabio. Università Politecnica delle Marche. f.rindi@univpm.it
expert	Peters, Akira. Station Biologique de Roscoff. akirapeters@gmail.com
expert	Destombe, Christophe. Station Biologique de Roscoff. destombe@sb-roscoff.fr; Valero, Myriam. Station Biologique de Roscoff. valero@sb-roscoff.fr
literature	Irvine, L.M. (1983). Seaweeds of the British Isles. Vol. 1: Rhodophyta. Part 2A: Cryptonemiales (sensu stricto) Palmariales, Rhodymeniales. British Museum (Natural History) London, p. 115 pp.
literature	Cormaci, M.; Furnari, G.; Catra, M.; Alongi, G.; Giaccone, G. (2012). Flora marina bentonica del Mediterraneo: Phaeophyceae. Bollettino dell'Accademia Gioenia. 45: 1-508.
literature	Womersley, H. B. S. (1987). The marine benthic flora of southern Australia. Part II. Adelaide: South Australian Government Printing Division. Adelaide: South Australian Government Printing Division, pp. 481, 169 figs, 1 table, 8 plates, 4 maps.
literature	Bartsch, Inka. Alfred-Wegener-Institute. inka.bartsch@awi.de; Herbst, Anne. University Rostock. anne.herbst2@uni-rostock.de; Karez, Rolf. State Agency for Agriculture. Environment and Rural Areas. Rolf.Karez@llur.landsh.de; Kuhlenkamp, Ralph. Phycomarin. ralph.kuhlenkamp@phycomarin.de; Schubert, Hendrik. University Rostock. hendrik.schubert@uni-rostock.de
literature	Brodie, J. A. I. L. M. (2003). Seaweeds of the British Isles. Vol. 1: Rhodophyta. Part 3B: Bangiophycidae. Intercept Ltd, Hampshire SP10 1YG, United Kingdom.
literature	Irvine, L.M.; Chamberlain, Y.M. (1994). Seaweeds of the British Isles: Rhodophyta, Part 2B. Corallinales, Hildenbrandiales. Seaweeds of the British Isles, 1. Natural History Museum: London. ISBN 0-11-310016-7. 276 pp. Part of: Seaweeds of the British Isles. ISSN 8769-8522
literature	Athanasiadis, A. (1996). Morphology and classification of the Ceramioideae (Rhodophyta) based on phylogenetic principles. Opera Botanica, 128, 216 pp.
literature	Womersley, H. B. S. (1994). The marine benthic flora of southern Australia - Rhodophyta - Part III A: Bangiophyceae and Florideophyceae (Acrochaetiales, Nemiales, Gelidiales, Hildenbrandiales and Gigartinales sensu lato). Australian biological resources study, Canberra.
literature	Carpenter, K. E.; Niem, V. H. (1998). The living marine resources of the Western Central Pacific. Volume 1. Seaweeds, corals, bivalves and gastropods. FAO Species Identification Guide for Fishery Purposes. FAO: Rome. ISBN 92-5-104051-6. XIV, 686 pp.



Type	Source
literature	Womersley, H. B. S. (1996). The marine benthic flora of southern Australia - Rhodophyta - Part III B. In: Flora of Australia, supplementary series, number 5. Australian biological resources study Canberra, p. 392 pp.
literature	Barcelo Marti, M.; Gallardo Garcia, T.; Gomez Garreta, A.; Perez Ruzafa, I.; Ribera Siguan, M.; Rull Luch, J. (2001). Flora Phycologica Iberica, vol 1: Fucales. Universidad de Murcia.
literature	Taylor, W. R. (1985). Marine algae of the eastern tropical and subtropical coasts of the Americas. The University of Michigan press, Michigan.
literature	Abbott, I. A. (1999). Marine red algae of the Hawaiian Islands. Bishop Museum Press, Hawaii, Honolulu.
literature	Burrows, E.M. (1991). Seaweeds of the British Islands, vol. 2 Chlorophyta. Natural History Museum Publications London, p. 238 pp.
literature	Womersley, H. B. S. (2003). The marine benthic flora of southern Australia - Rhodophyta - Part III D (Ceramiaceae, Delesseriaceae, Sarcomeniaceae, Rhodomelaceae). In: Flora of Australia, supplementary series, number 18. Australian biological resources study and the State Herbarium of South Australia Canberra, pp. 533 pp., ill.
literature	Stegenga, H.; Anderson, R. J.; Bolton, J. J. (2000). Notes on Ceramiaceae (Rhodophyta) from the eastern Cape Province, South Africa. III. New records from the Tsitsikamma coastal park, with the description of <i>Scageliopsis tsitsikammae</i> . Blumea. 45, 485-494.
literature	Wang, W. J.; Zhu, H. Y.; Xu, P.; Xu, J. R.; Lin, X. Z.; Huang, C. K. (2008). Characterization of the life history of <i>Bangia fuscopurpurea</i> (Bangiaceae, Rhodophyta) in connection with its cultivation in China. Aquaculture. 278, 101-109.
literature	Womersley, H.B.S. (1984). The marine benthic flora of southern Australia. Part I: Chlorophyta. Woolman, Government Printer, South Australia, Adelaide.
literature	Womersley, H.B.S. (1998). The marine benthic flora of Southern Australia. Rhodophyta. Part III C: Rhodophyceae, Ceramiaceae, Dasyaceae. State Herbarium, South Australia.
literature	Schnetter, R.; Brück, B.; Gerke, K.; Seibold, G. (1990). Notes on heterokaryotic life cycle phases in some Dasycladales and Bryopsidales (Chlorophyta). In: Cell Walls and Surfaces, Reproduction, Photosynthesis. Springer, pp. 124-133.
literature	Díaz-Tapia, P.; Bárbara, I. (2013). Seaweeds from sand-covered rocks of the Atlantic Iberian Peninsula. Part 1. The Rhodomelaceae. (Ceramiaceae, Rhodophyta). Cryptogamie Algologie. 34(4): 325-422.
literature	Van Reine, W. P. (1982). A taxonomic revision of the European Sphacelariaceae:(Sphacelariales, Phaeophyceae). Brill Archive.
literature	Coppejans, E. (1995). Flore algologique des côtes du Nord de la France et de la Belgique. In: Scripta botanica Belgica, p. 454.



Type	Source
literature	Harper, J. T.; Saunders, G. W. (2002). A re-classification of the Acrochaetiales based on molecular and morphological data, and establishment of the Colaconematales ord. nov. (Florideophyceae, Rhodophyta). <i>European Journal of Phycology</i> . 37(3): 463-476.
literature	South, G. R.; Hooper, R. G.; Irvine, L. M. (1972). The life history of <i>Turnerella pennyi</i> (Harv.) Schmitz. <i>Brit Phycol J</i> . 7, 221-233.
literature	Denizot, M. (1968). Les algues floridees encroutantes (a l'excursion des Corallinacees). Laboratoire Cryptogamie, Muséum National d'Histoire Naturelle, Paris, 310 pp.
expert	Vranken, Sofie. Ghent University. sofiemvranken@gmail.com
literature	De Clerck, O.; Anderson, R. J.; Bolton, J. J.; Robertson-Andersson, D. (2002). <i>Schimmelmannia elegans</i> (Gloiosiphoniaceae, Rhodophyta): South Africa's first introduced seaweed?. <i>Phycologia</i> . 41(2): 184-190.
literature	Maggs, C. A.; Ward, B. A. (1996). The genus <i>Pikea</i> (Dumontiaceae, Rhodophyta) in England and the North Pacific: comparative morphological, life history, and molecular studies. <i>J Phycol</i> . 32, 176-193.
expert	Robuchon, Marine. Muséum National d'Histoire Naturelle. marine.robuchon@mnhn.fr
literature	Kraft, G. T. (2007). <i>Algae of Australia: Marine Benthic Algae of Lord Howe Island and the Southern Great Barrier Reef, 1: Green Algae</i> . ABRS/CSIRO Publishing, Canberra Melbourne. [i-iv], v-vi, 1-347.
literature	Leliaert, F.; Coppejans, E. (2007). Morphological re-assessment of the <i>Boodlea composita</i> - <i>Phyllocladion anastomosans</i> species complex (Siphonocladales: Chlorophyta). <i>Australian Systematic Botany</i> . 20, 161-185.
literature	Edelstein, T. (1970). The life history of <i>Gloiosiphonia capillaris</i> (Hudson) Carmichael. <i>Phycologia</i> . 9, 55-59.
literature	Peters, A. F.; Novacek, I.; Müller, D. G.; McLachlan, J. (1987). Culture studies on reproduction of <i>Sphaerotrichia divaricata</i> (Chordariales, Phaeophyceae). <i>Phycologia</i> . 26, 457-466.
literature	Hillis-Colinvaux, L. (1980). Ecology and taxonomy of <i>Halimeda</i> : Primary producer of coral reefs. <i>Advances in Marine Biology Volume 17</i> . 1-327.
literature	Vroom, P. S.; Smith, C. M.; Coyer, J. A.; Walters, L. J.; Hunter, C. L.; Beach, K. S. et al. (2003). Field biology of <i>Halimeda tuna</i> (Bryopsidales, Chlorophyta) across a depth gradient: comparative growth, survivorship, recruitment, and reproduction. <i>Hydrobiologia</i> . 501, 149-166.
literature	Peters, A. (1998). Ribosomal DNA sequences support taxonomic separation of the two species of <i>Chorda</i> : reinstatement of <i>Halosiphon tomentosus</i> (Lyngbye) Jaasund (Phaeophyceae, Laminariales). <i>Eur. J. Phycol</i> . 33, 65-71.
literature	Schneider, C. W. S. J. S. (1991). <i>Seaweeds of the southeastern United States</i> . Duke University Press, Durham, London.



Type	Source
literature	Kim, M. S.; Lee, I. K. (1999). <i>Neosiphonia flavimarina</i> gen. et sp. nov. with a taxonomic reassessment of the genus <i>Polysiphonia</i> (Rhodomelaceae, Rhodophyta). <i>Phycol Res.</i> 271-281.
literature	Maggs, C. A. (1989). <i>Erythrodermis allenii</i> Batters in the life history of <i>Phyllophora traillii</i> Holmes ex Batters (Phylloporaceae, Rhodophyta). <i>Phycologia.</i> 28, 305-317.
literature	Peña, V.; Bárbara, I. (2010). New records of crustose seaweeds associated with subtidal maerl beds and gravel bottoms in Galicia (NW Spain). <i>Bot Mar.</i> 53, 41-61.
literature	Littler, D. S. L. M. M. (2000). Caribbean reef plants. OffShore Graphics, Inc. Washington.
literature	Sanson, M.; Martin, M. J.; Reyes, J. (2006). Vegetative and reproductive morphology of <i>Cladosiphon contortus</i> , <i>C. occidentalis</i> and <i>C. cymodoceae</i> sp. nov. (Ectocarpales, Phaeophyceae) from the Canary Islands. <i>Phycologia.</i> 45, 529-545.
literature	Saunders, G. W.; Lane, C. E.; Schneider, C. W.; Kraft, G. T. (2006). Unraveling the <i>Asteromenia peltata</i> species complex with clarification of the genera <i>Halichrysis</i> and <i>Drouetia</i> (Rhodymeniaceae, Rhodophyta). <i>Botany.</i> 84, 1581-1607.
literature	Breeman, A. M.; Ten Hoopen, A. (1981). Ecology and distribution of the subtidal red alga <i>Acrosymphyton purpuriferum</i> (J. Ag.) Sjöst. (Rhodophyceae, Cryptonemiales). <i>Aquatic Botany.</i> 11: 143-166.
literature	Draisma, S. G.; Prud'homme Van Reine, W. F.; Kawai, H. (2010). A revised classification of the Sphacelariales (Phaeophyceae) inferred from a <i>psbC</i> and <i>rbcL</i> based phylogeny. <i>Eur. J. Phycol.</i> 45, 308-326.
literature	McCarthy, P.M., Huisman, J. & Kraft, G.T. (2006). Algae of Australia: Nemiales. Australian Government - SCIRO publishing, Canberra.
literature	Schneider, C. W.; Searles, R. B. (1997). Notes on the marine algae of the Bermudas. 2. Some Rhodophyta, including <i>Polysiphonia tongatensis</i> and a discussion of the <i>Herposiphonia secunda/tenella</i> complex. <i>Cryptogamia, algol.</i> 2, 187-210.
literature	Kawai, H.; Sasaki, H. (2004). Morphology, life history, and molecular phylogeny of <i>Stschapovia flagellaris</i> (Tilopteridales, Phaeophyceae) and the erection of the Stschapoviaceae fam. nov. <i>Journal of Phycology.</i> 40(6): 1156-1169.
literature	Breeman, A. M. (1979). The caryological phases in the life history of <i>Acrosymphyton purpuriferum</i> (J. Ag.) Sjöst. (Rhodophyceae, Cryptonemiales). <i>Phycologia.</i> 18(2): 146-148.
literature	Wilce, R. T. (1969). <i>Papenfussiella callitricha</i> : new observations on a little-known endemic brown alga from southwest Greenland. <i>J Phycol.</i> 5, 173-180.
literature	Bartsch, I.; Wiencke, C.; Bischof, K.; Buchholz, C. M.; Buck, B. H.; Eggert, A. (2008). The genus <i>Laminaria</i> sensu lato: recent insights and developments. <i>Eur. J. Phycol.</i> 43, 1-86.
literature	Maggs, C. A.; Pueschel, C. M. (1989). Morphology and development of <i>Ahnfeltia plicata</i> (Rhodophyta): proposal of Ahnfeltiales ord. nov. <i>J Phycol.</i> 25, 333-351.



Type	Source
literature	De Jong, Y. S. D. M.; Prud'homme van Reine, W. F.; Lokhorst, G. M. (1997). Studies on Dasyaceae. II. A revision of the genera <i>Eupogodon</i> and <i>Dipterocladia</i> gen. nov. (Ceramiaceae, Rhodophyta). <i>Botanica Marina</i> . 40(1-6): 421-450.
literature	Mathieson, A. C.; Dawes, C. J.; Wallace, A. L.; Klein, A. S. (2006). Distribution, morphology, and genetic affinities of dwarf embedded <i>Fucus</i> populations from the Northwest Atlantic Ocean. <i>Botanica Marina</i> . 49(4): 283-303.
literature	Wynne, M. J.; Leliaert, F. (2001). <i>Pedobesia simplex</i> (Kützinger) comb. nov. (Chlorophyta), a new name for <i>P. lamourouxii</i> and its first report from the Indian Ocean. <i>Cryptogam. Algol.</i> 22, 3-14.
literature	Mineur, F., Verlaque, M. & Johnson, M.P. (2005 (unpublished)). Traits of invasive macroalgae found in Europe. Results of the ALIENS (Algal Introductions to European Shores) project.
literature	Rodríguez-Prieto, C.; De Clerck, O. (2009). <i>Leptofaucheia coralligena</i> (Faucheaceae, Rhodophyta), a new species from the Mediterranean Sea. <i>European Journal of Phycology</i> . 44: 107-121.
literature	Abbott, I. A.; Ballantine, D. L.; O'Doherty, D. C. (2010). Morphological relationships within the genus <i>Lophocladia</i> (Rhodomelaceae, Rhodophyta) including a description of <i>L. kuesteri</i> sp. nov. from Hawaii. <i>Phycologia</i> . 49(4): 390-401.
literature	Pedersen, P.M. (1984). Studies on primitive brown algae (Fucophyceae). <i>Opera botanica</i> , 74, 5-76.
literature	Bergström, A.; Tatarenkov, A.; Johannesson, K.; Jonsson, R. B.; Kautsky, L. (2005). Genetic and morphological identification of <i>Fucus radicans</i> sp. nov. (Fucales, Phaeophyceae) in the brackish Baltic Sea. <i>Journal of Phycology</i> . 41: 1025-1038.
literature	Tabares, N.; Afonsocarrillo, A.-C. (1997). Morfología y distribución de <i>Thuretella schousboei</i> en las islas Canarias (Rhodophyta, Gloiosiphoniaceae). <i>Vieraea</i> . 26, 77-85.
literature	Nam, K. W.; Choi, H. G. (2000). A detailed morphological study of the type species of <i>Osmundea</i> (Rhodomelaceae, Rhodophyta). <i>Bot Mar.</i> 43, 291-297.
literature	Cecere, E.; Perrone, C. (2002). Morphology of <i>Acanthophora nayadiformis</i> (Ceramiaceae, Rhodophyceae). <i>Phycologia</i> . 41, 523-532.
literature	Kim, S. H.; Peters, A. F.; Kawai, H. (2003). Taxonomic revision of <i>Sphaerotrichia divaricata</i> (Ectocarpales, Phaeophyceae), with a reappraisal of <i>S. firma</i> from the north-west Pacific. <i>Phycologia</i> . 42, 183-192.
literature	Cormaci, M.; Furnari, G. (1994). <i>Halosia elisae</i> gen. et sp. nov. (Ceramiaceae, Rhodophyta) from the Mediterranean Sea and Halosieae trib. nov. <i>Phycologia</i> . 33(1), 19-23.
literature	Verges, A. & Rodríguez-Prieto, C. (2006). Anatomical characteristics and reproductive structures of <i>Kallymenia lacerata</i> (Kallymeniaceae, Rhodophyta) from the Mediterranean Sea. <i>Cryptogam. Algol.</i> , 27, 31-43.



Type	Source
literature	Van der Strate, H. J.; Van de Zande, L.; Stam, W. T.; Olsen, J. L. (2002). The contribution of haploids, diploids and clones to fine-scale population structure in the seaweed <i>Cladophoropsis membranacea</i> (Chlorophyta). <i>Mol. Ecol.</i> 11, 329-345.
literature	Leliaert, F.; Coppejans, E.; De Clerck, O. (1998). The Siphonocladales sensu Egerod (Chlorophyta) from Papua New Guinea and Indonesia (Snellius-II Expedition). <i>Belgian Journal of Botany.</i> 130, 177-197.
literature	Kawai, H.; Tokuyama, M. (1995). <i>Laminarionema elsbetiae</i> gen. et sp. nov. (Ectocarpales, Phaeophyceae), a new endophyte in <i>Laminaria</i> sporophytes. <i>Phycol Res.</i> 43, 185-190.
literature	Maggs, C. A.; Douglas, S. E.; Fenety, J.; Bird, C. J. (1992). A molecular and morphological analysis of the <i>Gymnogongrus devoniensis</i> (Rhodophyta) complex in the North Atlantic. <i>Journal of Phycology.</i> 28(2): 214-232.
literature	Bressan, G.; Babbini, L. (2003). Biodiversità marina delle coste Italiane: Corallinales del Mar Mediterraneo: guida all'identificazione. 10, 1-237.
literature	Norris, R. E. (1991). The structure, reproduction and taxonomy of <i>Vidalia</i> and <i>Osmundaria</i> (Rhodophyta, Rhodomelaceae). <i>Botanical Journal of the Linnean Society.</i> 106(1): 1-40.
expert	Verlaque, Marc. Institut Méditerranéen d'Océanologie. marc.verlaque@mio.osupytheas.fr
literature	Cochrane, et al. (2010). Marine Strategy Framework Directive Task Group 1 Report. Biological Diversity. JRC Scientific and Technical Reports; OSPAR 2010 Background Document for Maërl beds. OSPAR Commission Biodiversity Series. Publication Number: 491/2010. ISBN 978-1-907390-32-6.
literature	Cortel-Breeman, M. C.-B.; Van Den Hoek, C. (1970). Life-history studies on Rhodophyceae I. <i>Acrosymphyton purpuriferum</i> . J. Ag. Kyl. <i>Acta Bot. Neerl.</i> 19, 265-284.
literature	Clayden, S. L.; Saunders, G. W. (2010). Recognition of <i>Rubrointrusa membranacea</i> gen. et comb. nov., <i>Rhodonematella subimmersa</i> gen. et comb. nov. (with a reinterpretation of the life history) and the Meiodiscaceae fam. nov. within the Palmariales (Rhodophyta). <i>Phycologia.</i> 49(3), 283-300.
literature	Loiseaux-de-Goër, S.; Noailles, M. -C. (2008). Algues de Roscoff. Editions de la Station Biologique de Roscoff. p. 215.
literature	Schneider, C. W.; Chengsupanimit, T.; Saunders, G. W. (2011). A new genus and species from the North Atlantic, <i>Archestenogramma profundum</i> (Phyllophoraceae, Rhodophyta), with taxonomic resolution of the orphaned <i>Leptofaucha brasiliensis</i> . <i>Eur. J. Phycol.</i> 46, 442-452.
literature	Hasle, G. R.; Syvertsen, E. E. (1997). Marine Diatoms. pp. 5-385. In: C.R. Tomas (ed.) (1997). <i>Identifying Marine Phytoplankton</i> . Academic Press: San Diego, CA [etc.] (USA). ISBN 0-12-693018-X. XV, 858 pp.



Type	Source
literature	DeCew, T. C.; West, J. A. (1982). A sexual life history in <i>Rhodophysema</i> (Rhodophyceae): a re-interpretation. <i>Phycologia</i> . 21(1): 67-74.
literature	Burkhardt, E.; Peters, A. F. (1998). Molecular evidence from nrDNA ITS sequences that <i>Laminariocolax</i> (Phaeophyceae, Ectocarpales sensu lato) is a worldwide clade of closely related kelp endophytes. <i>J Phycol.</i> 34, 682-691.
literature	Hooper, R.; South, G. R. (1977). Distribution and ecology of <i>Papenfussiella callitricha</i> (Rosenv.) Kylin (Phaeophyceae, Chordariaceae). <i>Phycologia</i> . 16, 153-157.
literature	Ercegovic, A. (1955). Contribution à la connaissance des phéophycées de l'Adriatique moyenne. <i>Acta adriatica</i> , 7, 5-49.
literature	Lin, S. -M.; Yang, S. -Y.; Huisman, J. M. (2011). Systematics of <i>Liagora</i> with diffuse gonimoblasts based on rbcL sequences and carposporophyte development, including the description of the new genera <i>Neoizziella</i> and <i>Macrocarpus</i> (Liagoraceae, Rhodophyta). <i>European Journal of Phycology</i> . 46(3): 249-262.
literature	Woelkerling, W.J. (1988). The Coralline Red Algae: an analysis of the genera and subfamilies of nongeniculate Corallinaceae. British museum (Natural history) - Oxford university press London, Oxford, pp. i-xi, 1-268.
literature	Leliaert, F.; Coppejans, E. (2006). A revision of <i>Cladophoropsis</i> Borgesen (Siphonocladales, Chlorophyta). <i>Phycologia</i> . 45, 657-679.
literature	Kawai, H. (1986). On the life history of Japanese <i>Eudesme virescens</i> (Carm.). <i>J. Ag. Jap. J. Phycol.</i> 34, 203-208.
literature	de Jong, Y. ; van Reine, W. F. P. (1997). A review of the genus <i>Nemacystus</i> (Spermatocnaceae, Chordariales, Phaeophyceae), including phylogenetic and biogeographical hypotheses. <i>Nova Hedwigia</i> . 64, 1-40.
literature	Jaasund, E. (1951). Marine algae from Northern Norway. I. <i>Bot. Notiser</i> . 128-142.
literature	Britton, N. L.; Millspaugh, C. F. (1920). <i>The Bahama Flora</i> . authors, New York.
literature	Ardré, F.; Boudouresque, C.-F.; Cabioch, J. (1974). Présence remarquable du <i>Symphyclocladia</i> marchantioides (Harvey) Falkenberg aux Açores. <i>Bulletin de la société phycologique de France</i> . 19: 178-182.
literature	Rueness, J. (1974). Life history in culture and chromosome number in <i>Isthmoplea sphaerophora</i> (Phaeophyceae) from southern Scandinavia. <i>Phycologia</i> . 13, 323-328.
literature	Maggs, C. (1997). Life history of the rare red alga <i>Tsengia bairdii</i> . <i>Cryptogamie. Algologie</i> , 18, 151-161.
literature	Peters, A. F. (1992). Culture studies on the life history of <i>Chordaria linearis</i> (Phaeophyceae) from Tierra del Fuego, South America. <i>Journal of Phycology</i> . 28(5): 678-683.



Type	Source
literature	Kuhlenkamp, R.; Müller, D. (1985). Culture studies on the life history of <i>Haplospora globosa</i> and <i>Tilopteris mertensii</i> (Tilopteridales, Phaeophyceae). <i>Brit Phycol J.</i> 20, 301-312.
literature	Wilce, R.; Maggs, C. (1989). Reinstatement of the genus <i>Haemescharia</i> (Rhodophyta, Haemeschariaceae fam. nov.) for <i>H. polygyria</i> and <i>H. hennedyi</i> comb. nov.(= <i>Petrocelis hennedyi</i>). <i>Canadian Journal of Botany.</i> 67, 1465-1479.
literature	Fredericq, S.; Hommersand, M. H. (1990). Morphology and systematics of <i>Holmsella pachyderma</i> (Pterocladophilaceae, Gracilariales). <i>Brit Phycol J.</i> 25, 39-51.
literature	Kato, A.; Baba, M.; Kawai, H.; Masuda, M. (2006). Reassessment of the little-known crustose red algal genus <i>Polystrata</i> (Gigartinales), based on morphology and SSU rDNA sequences. <i>J. Phycol.</i> 42, 922-933.
literature	Parente, M. I.; Fletcher, R. L.; Neto, A. I.; Tittley, I.; Sousa, A. F.; Draisma, S. (2010). Life history and morphological studies of <i>Punctaria tenuissima</i> (Chordariaceae, Phaeophyceae), a new record for the Azores. <i>Bot Mar.</i> 53, 223-231.
literature	Kawai, H. (1997). Morphology and life history of <i>Coelocladia arctica</i> (Dictyosiphonales, Phaeophyceae), new to Japan. <i>Phycol Res.</i> 45, 183-187.
literature	Forward, S. G.; South, G. R. (1985). Observations on the taxonomy and life history of North Atlantic <i>Acrothrix Kylin</i> (Phaeophyceae, Chordariales). <i>Phycologia.</i> 24, 347-359.
literature	Rodríguez-Prieto, C.; Freshwater, D. W.; Hommersand, M. H. (2013). Vegetative and reproductive development of Mediterranean <i>Gulsonia nodulosa</i> (Ceramiales, Rhodophyta) and its genetic affinities. <i>Phycologia.</i> 52(4): 357-367.
literature	Huisman, J. M.; Kraft, G. T. (1983). <i>Gymnophycus</i> , a new genus of Ceramiaceae (Rhodophyta) from eastern Australia. <i>Phycologia.</i> 22(3): 285-294.
literature	Borgesen, F. (1972). Marine algae of the Canary islands.
literature	Coppejans, E. (1975). Végétation marine de l'île de Port-Cros (Parc National) XI. Sur Halodictyon mirabile Zanard. (Rhodophyceae). <i>Biol. Jb. Dodonaea.</i> 43, 116-126.
literature	Chen, L.-M.; Edelstein, T. (1979). The life history of <i>Coilodesme bulligera</i> Strömf.(Phaeophyta, dictyosiphonales). <i>Proceedings of the Nova Scotian Institute of Science.</i> 29: 405-410.
literature	Díaz-tapia, P.; Bárbara, I. (2014). Seaweeds from Sand-Covered Rocks of the Atlantic Iberian Peninsula. Part 2. Palmariales, Ceramiales (Excluding Rhodomelaceae), Gelidiales, Gigartinales, Plocamiales, Rhodymeniales and Scytothamiales. <i>Cryptogamie, Algologie.</i> 35(2): 157-199.
literature	Morabito, M.; Gargiulo, G. M.; Genovese, G. (2010). A review of life history pathways in bryopsis. <i>AAPP Atti della Accademia Peloritana dei Pericolanti, Classe di Scienze Fisiche, Matematiche e Naturali.</i> 88(2).



Type	Source
literature	Coppejans, E.; Boudouresque, C.-F. (1984). Découverte du gamétophyte femelle et du tétrasporophyte de <i>Dasyella gracilis</i> Falkenberg (Rhodophyta, Ceramiales). Bulletin de la société royale de botanique de Belgique. 117, 8-18.
literature	Woelkerling, W. J.; Irvine, L. M. (1982). The Genus <i>Schmitziella</i> Bornet-Et-Batters (Rhodophyta) - Corallinaceae or Acrochaetiaceae. Brit Phycol J. 17, 275-295.
literature	Littler, D. S.; Littler, M. M. (1991). Systematics of <i>Anadyomene</i> species (Anadyomenaceae, Chlorophyta) in the tropical western. Atlantic. J Phycol. 27, 101-118.
literature	Athanasiadis, A. (1988). North Aegean marine algae. II. Studies on the thallus structure and reproduction of <i>Nemastoma dichotomum</i> J. Agardh and <i>Predaea ollivieri</i> J. Feldmann (Rhodophyta, Gigartinales). Bot Mar. 31, 23-32.
literature	Saunders, G.; McLachlan, J. (1991). Morphology and reproduction of <i>Meiodiscus spetsbergensis</i> (Kjellman) gen. et comb. nov., a new genus of Rhodophysemataceae (Rhodophyta). Phycologia. 30, 272-286.
literature	Santelices, B. (2004). <i>Parviphyucus</i> , a new genus in the Gelidiellaceae (Gelidiales:Rhodophyta). Cryptogamie. Algologie. 25: 313-326.
literature	Clayton, M. N. (1979). The life history and sexual reproduction of <i>Colpomenia peregrina</i> (Scytosiphonaceae, Phaeophyta) in Australia. Brit Phycol J. 14, 1-10.
literature	Gabrielson, P. W.; Hommersand, M. H. (1982). The atlantic species of <i>Solieria</i> (Gigartinales, Rhodophyta): their morphology, distribution and affinities. J Phycol. 18, 31-45.
literature	Magne, F. (1990). Reproduction sexuée chez <i>Erythrotrichia carnea</i> (Rhodophyceae, Erythropeltidales). Cryptog., Algol., 11, 157-170.
literature	Newton, C.; Bracken, M. E. S.; Mcconville, M.; Rodrigue, K.; Thornber, C. S. (2013). Invasion of the Red Seaweed <i>Heterosiphonia japonica</i> Spans Biogeographic Provinces in the Western North Atlantic Ocean. PLoS One. 8, 7.
literature	Ardé, F. (1970). Observations sur le genre <i>Aphanocladia</i> Falkenberg et sur ses affinités. Revue algologique, 1, 37-55.
literature	Pedersen, P. M. L. (1974). On the systematic position of <i>Delamarea attenuata</i> (Phaeophyceae). Brit Phycol J. 9, 313-318.
literature	Abbott, I. A.; Doty, M. S. (1960). Studies in the Helminthocladiaaceae II. <i>Trichogloeopsis</i> . American Journal of Botany. 632-640.
literature	Kornmann, P. (1972). Ein Beitrag zur Taxonomie der Gattung <i>Chaetomorpha</i> (Cladophorales, Chlorophyta). Helgol. Wiss. Meeresunters. 23, 1-31.
literature	Saunders, G. W.; Virginia Lehmkuhl, K. (2005). Molecular divergence and morphological diversity among four cryptic species of <i>Plocamium</i> (Plocamiales, Florideophyceae) in northern Europe. European Journal of Phycology. 40(3): 293-312.



Type	Source
literature	Müller, D. G.; Parodi, E. R.; Peters, A. F. (1999). <i>Asterocladon lobatum</i> gen. et sp. nov., a new brown alga with stellate chloroplast arrangement, and its systemic position judged from nuclear rDNA sequences. <i>Phycologia</i> . 37: 425-432, 14 figs, 4 tables.
literature	Pedersen, P. M. (1989). Studies on <i>Kuckuckia spinosa</i> (Fucophyceae, Sorocarpaceae): life history, temperature gradient experiments, and synonymy. <i>Nordic Journal of Botany</i> . 9(4): 443-447.
literature	Masuda, M.; Guiry, M. D. (1995). Reproductive morphology of <i>Itonoa marginifera</i> (J. Agardh) gen. et comb. nov. (Nemastomataceae, Rhodophyta). <i>European Journal of Phycology</i> . 30(1): 57-67.
literature	Cecere, E.; Saracino, O. D.; Petrocelli, A. (2002). Propagules of <i>Alsidium corallinum</i> (Rhodomelaceae, Rhodophyta). <i>Botanica Marina</i> . 45(6): 580-585.
literature	Hamel, G. (1931). <i>Phéophycées de France</i> . Paris.
literature	Berecibar, E.; Wynne, M. J.; Santos, R. (2009). Report of the brown alga <i>Zosterocarpus oedogonium</i> (Ectocarpales) from Portugal, its first recorded occurrence outside of the Mediterranean Sea. <i>Nova Hedwigia</i> . 89, 237-244.
literature	Hanic, L. A.; Lindstrom, S. C. (2008). Life history and systematic studies of <i>Pseudothrix borealis</i> gen. et sp. nov. (=North Pacific Capsosiphon Groenlandicus, Ulotracheae, Chlorophyta). <i>Algae</i> . 23: 119-133.
literature	Wilce, R. T.; Pedersen, P. M.; Sekida, S. (2009). <i>Chukchia pedicellata</i> gen. et sp. nov. and <i>C. endophytica</i> nov. comb., arctic endemic brown algae (Phaeophyceae). <i>Journal of Phycology</i> . 45: 272-286.
literature	Mols-Mortensen, A.; Neefus, C. D.; Nielsen, R.; Gunnarsson, K.; Egilsdottir, S.; Pedersen, P. M.; Brodie, J. (2012). New insights into the biodiversity and generic relationships of foliose Bangiales (Rhodophyta) in Iceland and the Faroe Islands. <i>European Journal of Phycology</i> . 47(2): 146-159.
literature	Probyn, T. A.; Chapman, A. R. O. (1983). Summer growth of <i>Chordaria flagelliformis</i> (O.F. Muell.) C. Ag.: Physiological strategies in a nutrient stressed environment. <i>Journal of Experimental Marine Biology and Ecology</i> . 73(3): 243-271.
literature	Müller, D. G.; Meel, H. (1982). Culture studies on the life history of <i>Arthrocladia villosa</i> (Desmarestiales, Phaeophyceae). <i>British Phycological Journal</i> . 17(4): 419-425.
literature	Kawai, H.; Hanyuda, T.; Draisma, S. G. A.; Müller, D. G. (2007). Molecular phylogeny of <i>Discosporangium mesarthrocarpum</i> (Phaeophyceae) with a reinstatement of the order Discosporangiales. <i>Journal of Phycology</i> . 43(1): 186-194.
expert	Le Gall, Line; Leliaert, Frederik and De Clerck, Olivier.
literature	Montanes, M. A.; Sanson, M.; Reyes, J. (2006). Vegetative and reproductive phenology of <i>Zonaria tournefortii</i> (Dictyotales, Phaeophyceae) in sublittoral populations off the Canary Islands. <i>Bot Mar</i> . 49, 406-416.



Type	Source
literature	Kornmann, P. (1989). <i>Sahlingia</i> nov. gen. based on <i>Erythrocladia subintegra</i> (Erythropeltidales, Rhodophyta). <i>Brit Phycol J.</i> 24, 223-228.
literature	Rodriguez-Prieto, C.; Hommersand, M.H. (2009). Behaviour of the nuclei in pre- and postfertilization stages in <i>Kallymenia</i> (Kallymeniaceae, Rhodophyta). <i>Phycologia.</i> 48, 138-155.
literature	Woelkerling, W. J. (1987). The genus <i>Choreonema</i> in southern Australia and its subfamilial classification within the Corallinaceae (Rhodophyta). <i>Phycologia.</i> 26, 111-127.
literature	Mshigeni, K. (1977). The morphology and distribution ecology of <i>Corynomorpha prismatica</i> : A red seaweed of potential economic significance in southeast Tanzania. <i>Marine Biology.</i> 42, 157-160.
literature	Mayhoub, H., Gayral, P. & Jacques, R. (1976). Action de la composition spectrale de la lumière sur la croissance et la reproduction de <i>Calosiphonia vermicularis</i> (J. Agardh) Schmitz (Rhodophycées, Gigartinales). <i>Comptes rendus de l'académie des sciences à Paris, série D,</i> 283, 1041.
literature	South, G. R.; Hooper, R. G. (1976). <i>Stictyosiphon soriferus</i> (Phaeophyta, Dictyosiphonales) from eastern North America. <i>J Phycol.</i> 12, 24-29.
literature	Whittick, A. (1977). The reproductive ecology of <i>Plumaria elegans</i> (Bonnem.) Schmitz (Ceramiaceae: rhodophyta) at its northern limits in the western Atlantic. <i>Journal of Experimental Marine Biology and Ecology.</i> 29(3): 223-230.
literature	Roberts, K. R.; Stewart, K. D.; Mattox, K. R. (1982). Structure of the anisogametes of the green siphon <i>Pseudobryopsis</i> sp. (Chlorophyta). <i>Journal of Phycology.</i> 18(4): 498-508.
literature	Falkenberg, P. (1901). <i>Die Rhodomelaceen des Golfes von Neapel und der angrenzenden Meeres-Abschnitte.</i> O. Koeltz science publishers Berlin. 754 pp. + 724 Taf.
literature	Afonso-Carrillo, J. (1988). Structure and reproduction of <i>Spongites wildpretii</i> sp. nov. (Corallinaceae, Rhodophyta) from the Canary Islands, with observations and comments on <i>Spongites absimile</i> comb. nov. <i>British Phycological Journal.</i> 23(1): 89-102.
literature	Peters, A. F. (1988). Culture studies of a sexual life history in <i>Myriotrichia clavaeformis</i> (Phaeophyceae, Dictyosiphonales). <i>Brit Phycol J.</i> 23, 299-306.
literature	Jaasund, E. (1960). <i>Fosliea curta</i> (Fosl.) Reinke and <i>Isthmoplea sphaerophora</i> (Carm.) Kjellman. <i>Bot Mar.</i> 2, 174-181.
literature	Phillips, L. E.; De clerck, O. (2005). The terete and sub-terete members of the red algal tribe Amansieae (Ceramiales, Rhodomelaceae). <i>Cryptogam. Algal.</i> 26, 5-33.
literature	Saunders, G. W.; McLachlan, J. L. (1990). Taxonomic considerations of the genus <i>Rhodophysema</i> and the Rhodophysemataceae fam. nov. (Rhodophyta, Florideophycidae). <i>Proceedings of the Nova Scotian Institute of Science.</i> 39: 19-26.



Type	Source
literature	Wang, W.-L.; Liu, S.-L.; Lin, S.-M. (2005). Systematics of the calcified genera of the <i>Galaxauraceae</i> (Nemaliales, Rhodophyta) with an emphasis on Taiwan species. <i>Journal of Phycology</i> . 41(3): 685-703.
literature	N'Yeurt, A. D. R.; Payri, C. E. (2010). Marine algal flora of French Polynesia III. Rhodophyta, with additions to the Phaeophyceae and Chlorophyta. <i>Cryptogamie. Algologie</i> . 31(1): 3-205.
literature	Berger, S.; Kaeffer, M. J. (1992). <i>Dasycladales: an illustrated monograph of a fascinating algal order</i> . Thieme, Stuttgart.
literature	Di Camillo, C.; Puce, S.; Romagnoli, T.; Tazioli, S.; Totti, C.; Bavestrello, G. (2006). Coralline algae epibiontic on thecate hydrozoans (Cnidaria). <i>Journal of the Marine Biological Association of the UK</i> . 86(06): 1285-1289.
literature	Sauvageau, C. (1933). Sur quelques Algues phéosporées de Guéthary (Basses-Pyrénées). <i>Bull. Stn biol. Arcachon</i> . 30, 1-128.
literature	Loiseaux, S. (1969). Sur une espèce de <i>Myriotrichia</i> obtenue en culture à partir de zoïdes d' <i>Hecatonema maculans</i> Sauv. <i>Phycologia</i> . 8(1), 11-15.
literature	Fredersdorf, J.; Müller, R.; Becker, S.; Wiencke, C.; Bischof, K. (2009). Interactive effects of radiation, temperature and salinity on different life history stages of the Arctic kelp <i>Alaria esculenta</i> (Phaeophyceae). <i>Oecologia</i> . 160, 483-492.
literature	Bedini, R.; Bonechi, L.; Piazzini, L. (2011). Spread of the introduced red alga <i>Lophocladia lallemantii</i> in the Tuscan Archipelago (NW Mediterranean Sea). <i>Cryptogam. Algol.</i> 32, 383-391.
literature	Sartoni, G. (1992). <i>Stichothamnion cymatophilum</i> (Rhodomelaceae, Rhodophyta) a new record for mediterranean algal flora. <i>Cryptogamie, algologie</i> , 13, 39-43.
literature	Martin, M.J., Sansón, M. & Reyes, J. (1996). Morphology and anatomy of <i>Papenfussiella Kuromo</i> (Chordariaceae, Phaeophyta) from the Canary Islands. <i>Cryptogamie, algologie</i> , 17, 165.
literature	Hoek Van den, C. (1983). <i>Bryobesia johanna</i> , a small tropical representative of the order Cladophorales (Chlorophyceae). <i>J Phycol.</i> 19, 116-118.
literature	Baardseth, E. (1975). <i>Cryptopleura ramosa</i> (Huds.) Kylin ex Newton (Rhodophyceae) and <i>Omphalophyllum ulvaceum</i> Rosenv. (Phaeophyceae) new to Norway. <i>Sarsia</i> . 57, 109-112.
literature	Zuccarello, G.; West, J.; Bitens, A.; Kraft, G. (2000). Molecular phylogeny of <i>Rhodochaete parvula</i> (Bangiophyceae, Rhodophyta). <i>Phycologia</i> . 39, 75-81.
literature	Phillips, J. A. (2006). Drifting blooms of the endemic filamentous brown alga <i>Hincksia sordida</i> at Noosa on the subtropical east Australian coast. <i>Marine Pollution Bulletin</i> . 52(8): 962-968.
literature	Van de Poll, W. H.; Bischof, K.; Buma, A. G. J.; Breeman, A. M. (2003). Habitat related variation in UV tolerance of tropical marine red macrophytes is not temperature dependent. <i>Physiologia Plantarum</i> . 118(1): 74-83.



Type	Source
literature	Clayton, M. N. (1982). Life history studies in the Ectocarpales (Phaeophyta): contributions toward the understanding of evolutionary processes. <i>Botanica Marina</i> . 25: 111–16.
literature	De Clerck, O.; Leliaert, F.; Verbruggen, H.; Lane, C. E.; De Paula, J. C.; Payo, D. A.; Coppejans, E. (2006). A revised classification of the Dictyoteae (Dictyotales, Phaeophyceae) based on rbcL and 26s ribosomal DNA sequence analyses. <i>J Phycol.</i> 42, 1271-1288.
literature	Nam, K. W. (1999). Morphology of <i>Chondrophyucus undulata</i> and <i>C. parvipapillata</i> and its implications for the taxonomy of the <i>Laurencia</i> (Ceramiales, Rhodophyta) complex. <i>Eur. J. Phycol.</i> 34, 455-468.
literature	Peña, V.; Bárbara, I. (2013). Non-coraline crustose algae associated with maerl beds in Portugal: a reappraisal of their diversity in the Atlantic Iberian beds. <i>Botanica Marina</i> . 56(5-6): 481-493.
literature	Wysor, B.; O'Kelly, C. J.; Bellows, W. K.; Brown, J. F. (2004). The demise of the Chaetosiphonaceae (Cladoporales, Chlorophyta): Morphology and molecular phylogeny of <i>Chaetosiphon moniliformis</i> , <i>Blastosypha</i> spp. and <i>Wittrockiella</i> spp. Bigelow Laboratory for Ocean Sciences USA.
literature	Verbruggen, H.; Vlaeminck, C.; Sauvage, T.; Sherwood, A. R.; Leliaert, F.; De Clerck, O. (2009). Phylogenetic analysis of <i>Pseudochlorodesmis</i> strains reveals cryptic diversity above the family level in the siphonous green algae (Bryopsidales, Chlorophyta). <i>Journal of Phycology</i> . 45(3): 726-731.
literature	Boudouresque, C.-F.; Coppejans, E.; Marcot, J. (1976). Un nouveau genre de Peyssoneliaceae, <i>Metapeyssonnelia</i> (Rhodophyta). <i>Phycologia</i> . 15, 283-288.
literature	Catra, M.; Alongi, G. (2013). On some new and interesting marine macroalgae from the Greek coasts (Mediterranean Sea). <i>Nova Hedwigia</i> . 97, 3-4.
literature	Perrone, C.; Cecere, E. (1994). Two Solieriacean algae new to the mediterranean: <i>Agardhiella subulata</i> and <i>Solieria filiformis</i> (Rhodophyta, Gigartinales). <i>J. Phycol.</i> 30, 98-108.
literature	Seoane-Camba, S. A. (1989). Origin and structure of secondary synapses between the parasite <i>Gelidiocolax deformans</i> (Gelidiaceae, Rhodophyceae) and its host <i>Gelidium sesquipedale</i> (Gelidiaceae, Rhodophyta). <i>Cryptogamie, Algologie</i> . 10, 259.
literature	Decew, T. C.; West, J. A.; Ganesan, E. (1981). The life histories and developmental morphology of two species of <i>Gloiosiphonia</i> (Rhodophyta: Cryptonemiales, Gloiosiphoniaceae) from the Pacific Coast of North America. <i>Phycologia</i> . 20, 415-423.
literature	Kraft, G.T. (2009). Algae of Australia. Marine benthic algae of Lord Howe Island and the southern Great Barrier Reef, 2. Brown algae. pp. [i-iv], v-vi, 1-364, 107 figs. Erratum of fig. 73 from vol. 1. Canberra & Melbourne: Australian Biological Resources Study and CSIRO Publishing.



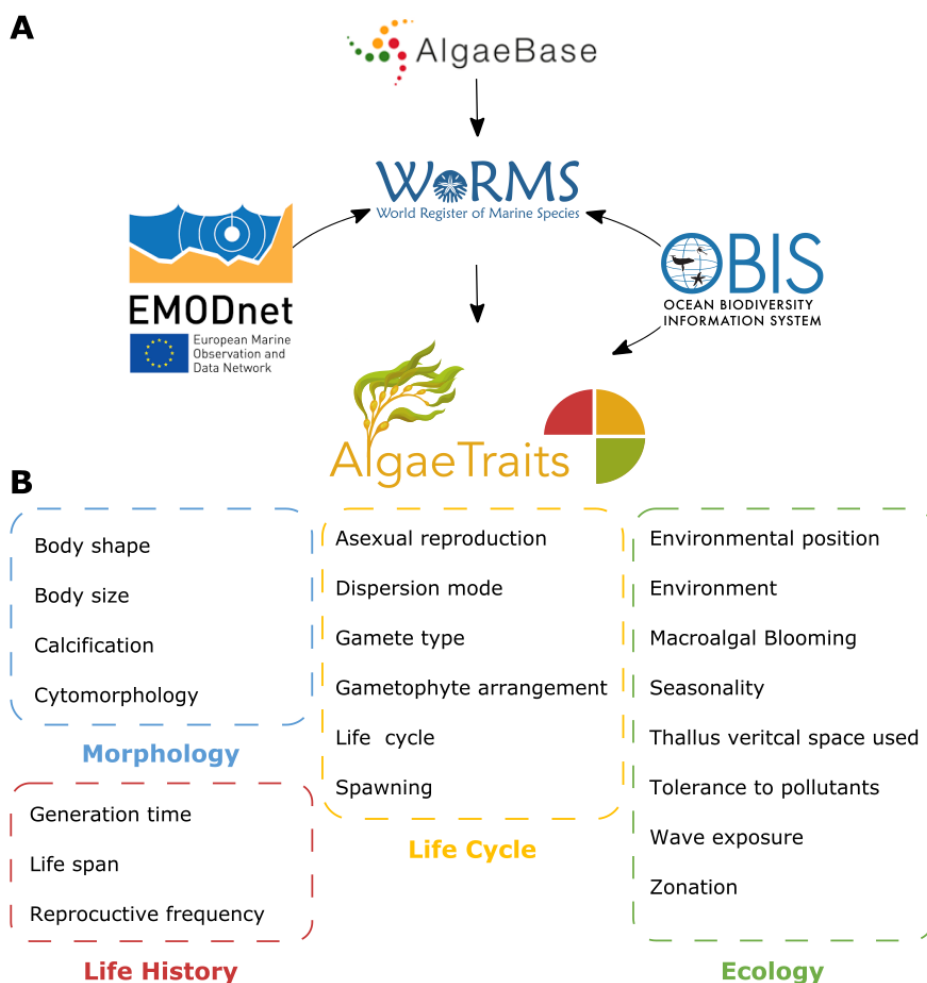
Type	Source
literature	Taskin, E. (2013). First report of the North Atlantic myrionematoid brown alga <i>Ulonema rhizophorum</i> Foslie (Phaeophyceae, Chordariaceae) in the Mediterranean Sea. <i>Mediterranean Marine Science</i> . 14(1): 125-128.
literature	Lee, R. (1973). General Ecology of the Canadian Arctic Benthic Marine Algae. <i>ARCTIC</i> . 26(1).
literature	Clayton, M.N. (1974). Studies on the development, life history and taxonomy of the Ectocarpales (Phaeophyta) in southern Australia. <i>Australian journal of botany</i> . 22(4), 743-813.
literature	Borja, A.; Franco, J.; Pérez, V. (2000). A Marine Biotic Index to Establish the Ecological Quality of Soft-Bottom Benthos Within European Estuarine and Coastal Environments. <i>Marine Pollution Bulletin</i> . 40(12), 1100-1114 + updated in http://ambi.azti.es (AMBI list of June 2019).
literature	Adams, N. M. (1994). Seaweeds of new Zealand. An illustrated guide. 306p.
literature	Zubia, M.; Draisma, S. G. A.; Morrissey, K. L.; Varela-Álvarez, E.; De Clerck, O. (2019). Concise review of the genus <i>Caulerpa</i> J.V. Lamouroux. <i>Journal of Applied Phycology</i> . 32(1): 23-39.
literature	Kormmann, P.; Sahling, P. -H. (1988). Die Entwirrung des <i>Botrytella</i> (Sorocarpus)-Komplexes (Ectocarpaceae, Phaeophyta). <i>Helgol. Meeresunters</i> . 42, 1-12.
literature	O'Kelly, C. J.; Wysor, B.; Bellows, W. K. (2004). Gene sequence diversity and the phylogenetic position of algae assigned to the genera <i>Phaeophila</i> and <i>Ochlochaete</i> (Ulvophyceae, Chlorophyta). <i>Journal of Phycology</i> . 40(4): 789-799.
literature	Steentoft, M.; Irvine, L. M.; Farnham, W. F. (1995). Two terete species of <i>Gracilaria</i> and <i>Gracilariopsis</i> (Gracilariales, Rhodophyta) in Britain. <i>Phycologia</i> . 34, 113-127.
literature	Laternus, F. (1996). Volatile halocarbons released from Arctic macroalgae. <i>Mar. Chem</i> . 55, 359-366.
literature	Hind, K. R.; Saunders, G. W. (2013). A molecular phylogenetic study of the tribe Corallineae (Corallinales, Rhodophyta) with an assessment of genus-level taxonomic features and descriptions of novel genera. <i>Journal of Phycology</i> . 49(1): 103-114.
literature	Maggs, C. A.; Guiry, M. D. (1987). An Atlantic population of <i>Pikea californica</i> (Dumontiaceae, Rhodophyta). <i>Journal of Phycology</i> . 23(1): 170-176.
literature	Hayakawa, Y. I.; Ogawa, T.; Yoshikawa, S.; Ohki, K.; Kamiya, M. (2012). Genetic and ecophysiological diversity of <i>Cladophora</i> (Cladophorales, Ulvophyceae) in various salinity regimes. <i>Phycol Res</i> . 60, 86-97.
literature	Secilla, A., Santolaria, A., Diez, I., Berecibar, E., Diaz, P., Bárbara, I. et al. (2008). <i>Scageliopsis patens</i> (Ceramiiales, Rhodophyta), a new introduced species along the European coast. <i>Cryptogam. Algol.</i> , 29, 191-199.
literature	De Clerck, O.; Gavio, B.; Fredericq, S.; Barbara, I.; Coppejans, E. (2005). Systematics of <i>Grateloupia filicina</i> (Halymeniaceae, Rhodophyta), based on rbcL sequence analyses and



Type	Source
	morphological evidence, including the reinstatement of <i>G. minima</i> and the description of <i>G. capensis</i> sp nov. J Phycol. 41: 391-410.
literature	Olsen, J. L.; Zechman, F. W.; Hoarau, G.; Coyer, J. A.; Stam, W. T.; Valero, M. (2010). The phylogeographic architecture of the fucoid seaweed <i>Ascophyllum nodosum</i> : an intertidal 'marine tree' and survivor of more than one glacial–interglacial cycle. Journal of biogeography. 37, 842-856.
literature	Leliaert, F.; Rueness, J.; Boedeker, C.; Maggs, C. A.; Cocquyt, E.; Verbruggen, H.; De Clerck, O. (2009). Systematics of the marine microfilamentous green algae <i>Uronema curvatum</i> and <i>Urospora microscopica</i> (Chlorophyta). Eur. J. Phycol. 44, 487-496.
literature	R. D. Wood. 1951. The Characeae. Botanical Review , Vol. 18, No. 5 (May, 1952), pp. 317-353
literature	Rodríguez-Prieto, C.; De Clerck, O.; Huisman, J.M.; Lin, S.-M. (2018). Systematics of the red algal genus <i>Halymenia</i> (Halymeniaceae, Rhodophyta): characterization of the generitype <i>H. floresii</i> and description of <i>Neofolia rosea</i> gen. et sp. nov. European Journal of Phycology. 53(4): 520-536.
literature	Huvé, P.; Huvé, H. (1976). Contribution à la connaissance de l'algue <i>Halichrysis depressa</i> (Montagne 1838 in J. Ag. 1851) Boret 1892 (Rhodophycées, Rhodyméniales). Phycologia. 15(3-4): 377-392.

601

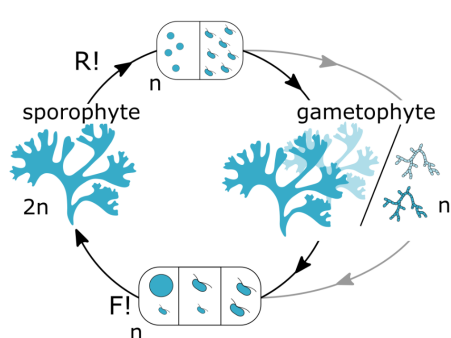
602



603

604 **Figure 1. A) Relation of AlgaeTraits to other databases.** AlgaeTraits is a subregister of the World Register of Marine
 605 Species (WoRMS), which aims to provide an comprehensive authoritative list of all published names of marine
 606 organisms and other biological information including traits. AlgaeBase, the most complete list on global algal
 607 taxonomy, is used as the main source for algal taxonomy in WoRMS. WoRMS and AlgaeTraits display OBIS
 608 occurrence data. All traits included in WoRMS and AlgaeTraits were collected under the EMODnet project. B) All 21
 609 traits currently included in AlgaeTraits can be categorised under ‘Morphology’, ‘Life History’, ‘Life Cycle’ and
 610 ‘Ecology’.

611



Haplodiplontic

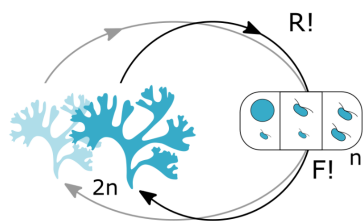
a biphasic life cycle with free living haploid gametophytic and diploid sporophytic phases that both undergo mitosis. The gametophytic and sporophytic phase can be similar in size and morphology (isomorphic) or different (heteromorphic). Here, sex determination happens in the haploid phase.

E.g. isomorphic monoicous:

Dermocorynus; heteromorphic monoicous:

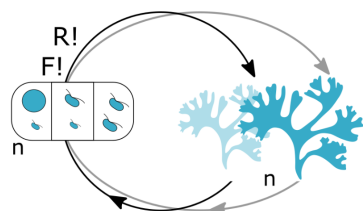
Atractophora, *Gloiosiphonia*; isomorphic dioicous:

Gracilaria; heteromorphic dioicous:
Cutleria, *Derbesia*, *Laminariales* (kelps)



Diplontic

a monomorphic life cycle where mitosis only happens in the diploid phase, the haploid phase is restricted to the unicellular gametes. Here, sex determination happens in the diploid phase. E.g. *Fucus*, *Cystoseira*



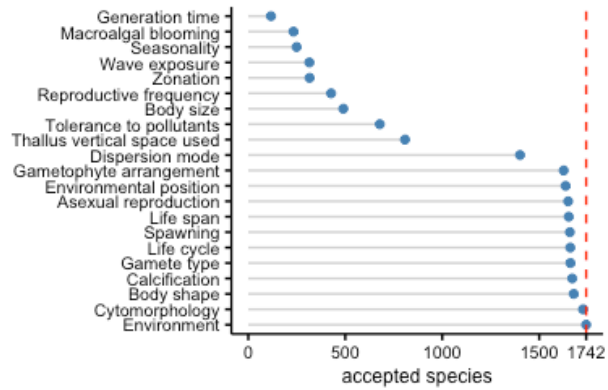
Haplontic

a monomorphic life cycle where mitosis only happens in the haploid phase. Here, sex determination happens in the haploid phase. E.g. *Chara*, *Tolypella*, *Rhodophysema*, *Pantoneura*

612

613 Figure 2. Life cycles of seaweeds. The sexual life cycle of seaweeds can be divided in three main categories: (1) biphasic
 614 haplodiplontic life cycle or (2) a monophasic haplontic or (3) monophasic diplontic life cycle. Male and female
 615 reproductive structures (haploid gametes) can be formed on the same or separate thalli (mono- vs. di-; light blue
 616 indicates production of male and female gametes on separate individuals), and sex determination can happen in both
 617 the haploid and diploid life phase (-oicous vs. -oecious). The form of the gametes can be (1) identical in size and
 618 morphology (isogamous), (2) different in size but both motile with flagella (anisogamous), or (3) different in morphology
 619 and size with a bigger non-motile female gamete lacking a flagella and smaller motile male gametes with flagella
 620 (oogamous), except for red algae in which the male gamete is also non-motile. n = haploid, 2n = diploid, F! = fertilisation,
 621 R! = meiosis

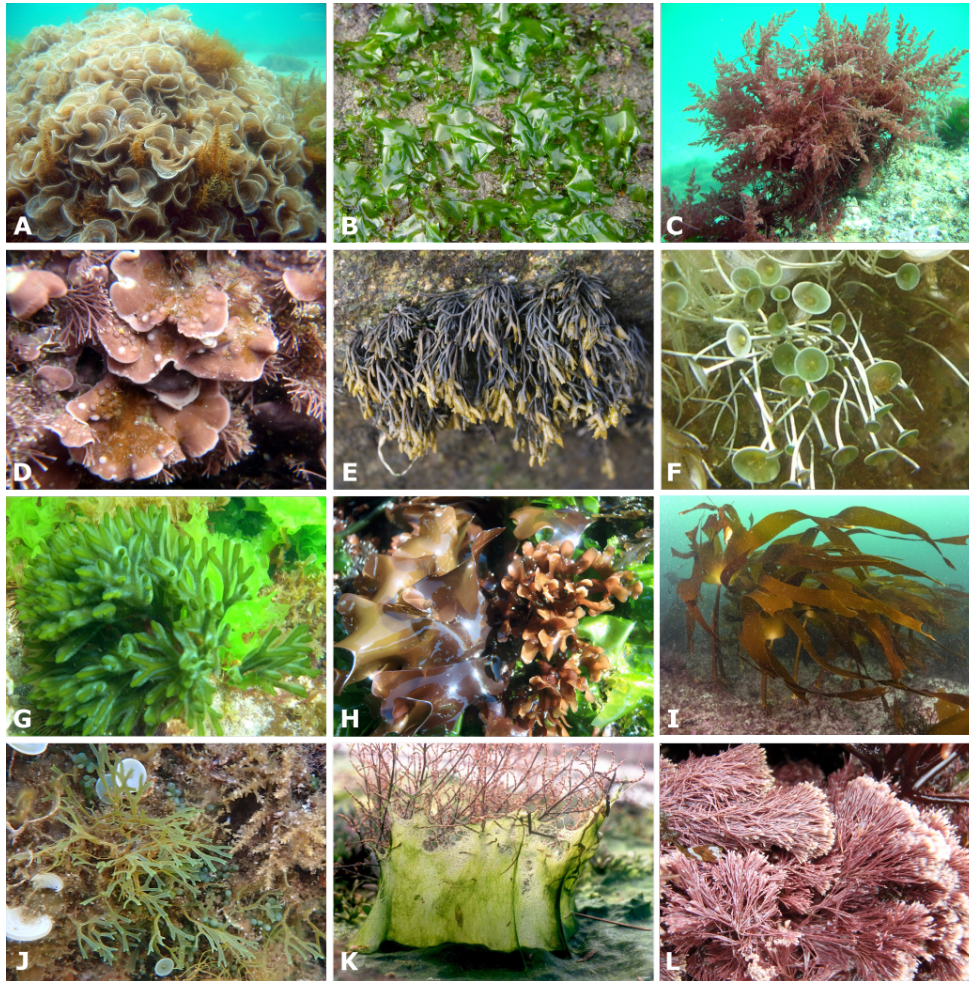
622



623

624 **Figure 3. Number of taxonomically accepted species from Europe with trait information by trait. The dashed red line**
625 **indicates the total number of accepted species (1742) according to Algaebase.**

626



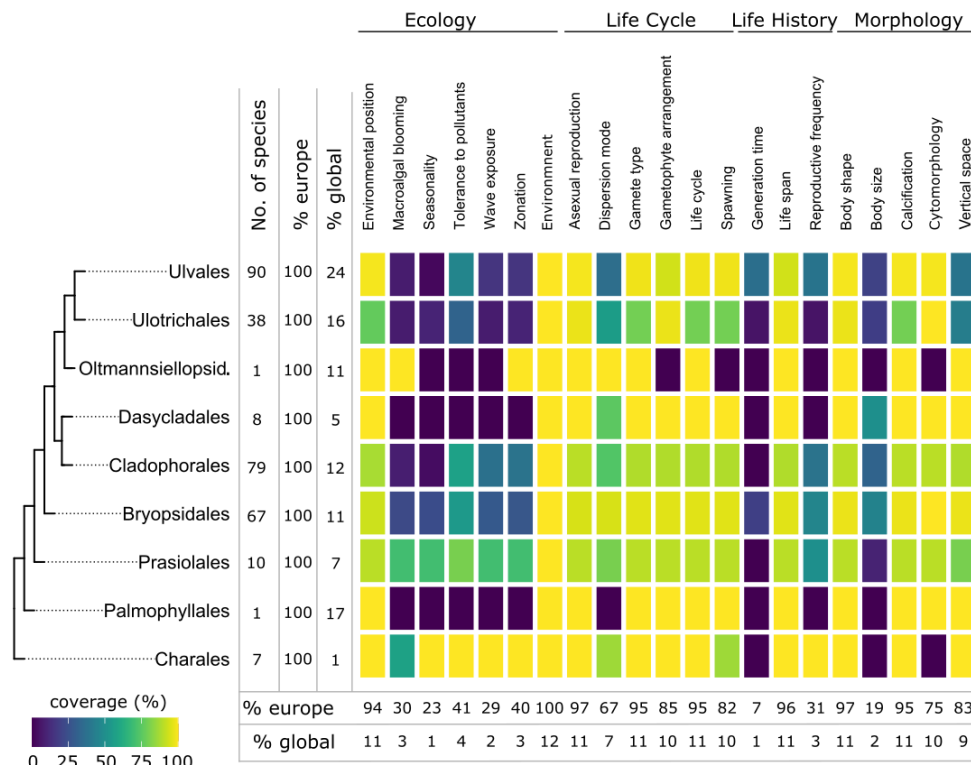
627

628 Fig. 4 Morphological Body Shape diversity of seaweeds. A) flabellate and calcified *Padina*, B) foliose *Ulva*, C) branched
629 *Asparagopsis*, D) crustose and calcified *Mesophyllum*, E) branched *Pelvetia*, F) siphonous and calcified *Acetabularia*, G)
630 branched and siphonous *Codium*. H) *Chondrus* (left) and *Mastocarpus* (right) I) erect *Laminaria*, J) dichotomously
631 branched *Dictyota*, K) filamentous *Rhizoclonium*, L) calcified and articulated *Jania*. Photo credits: A-D, F-H, K-L:
632 Ignacio Bárbara; E, J: Olivier De Clerck, I: Cristina Piñeiro-Corbeira

633



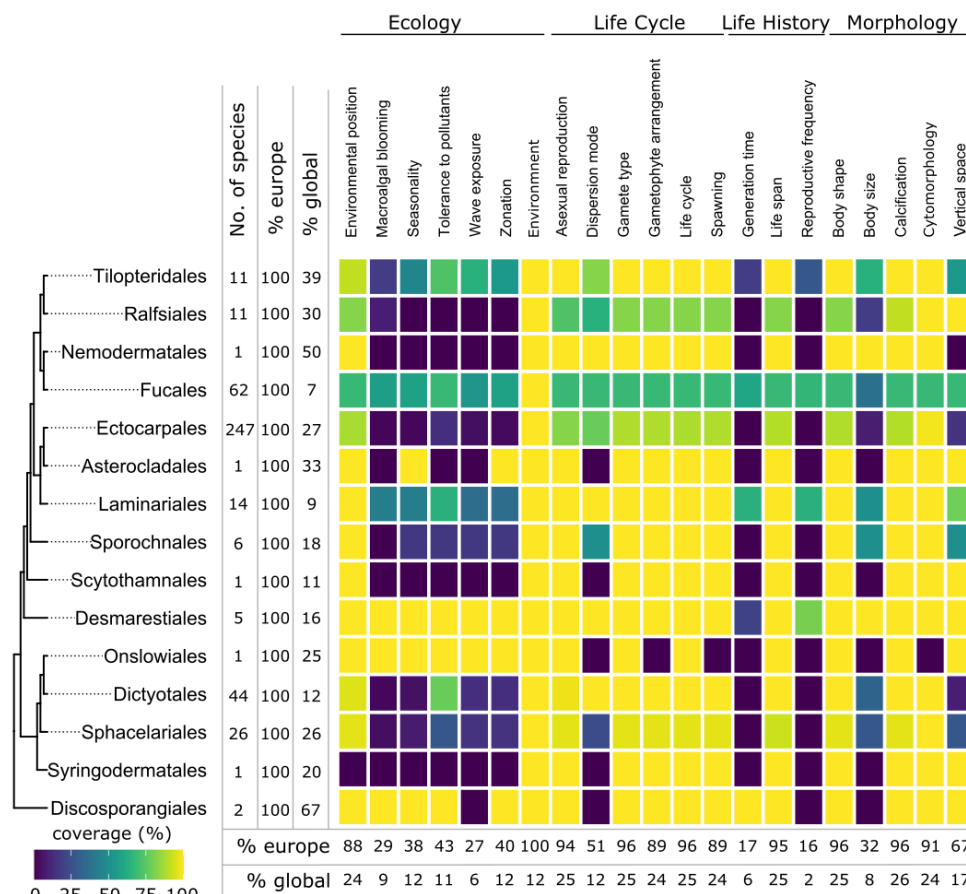
634



635

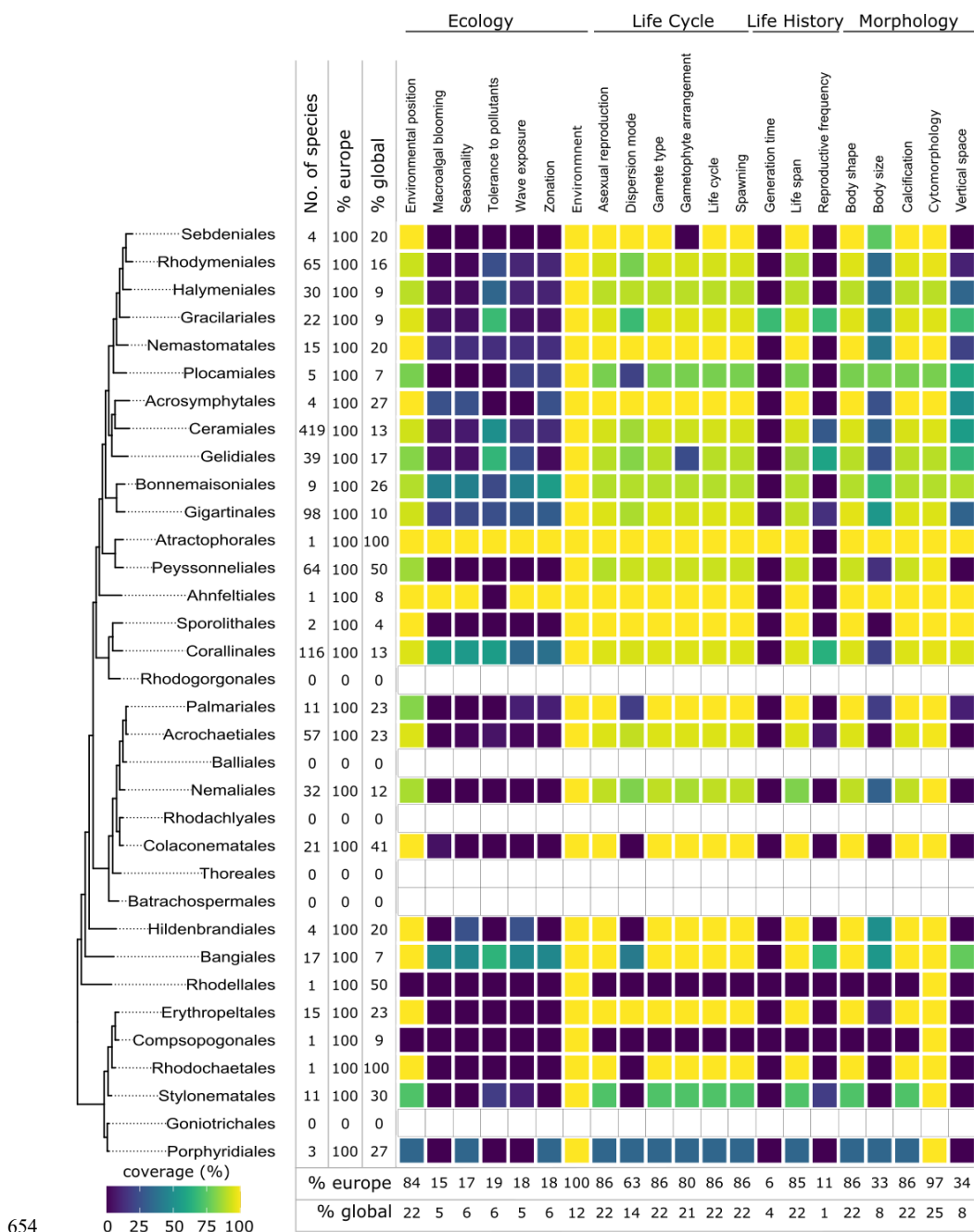
636 **Figure 5: Data coverage for green seaweeds. The taxonomic coverage is restricted to marine representatives. The order**
 637 **Charales is included to accommodate a limited number of species that occur in brackish habitats. The left side shows**
 638 **a phylogenetic tree at the ordinal level. Next to the tree the number of species with trait information available in the**
 639 **database is indicated as the total number (No. of species), the percentage relative to the total number of European**
 640 **species (% europe), and the percentage relative to the total number of global species (% global). The heatmap indicates**
 641 **the percentage of trait coverage relative to the total number of European species per order per trait included in the**
 642 **database. At the bottom of the figure, average species coverage per trait is presented as a percentage of the total number**
 643 **of European (% europe) and global (% global) species. Oltmannsiellopsid. refers to Oltmannsiellopsidales.**

644

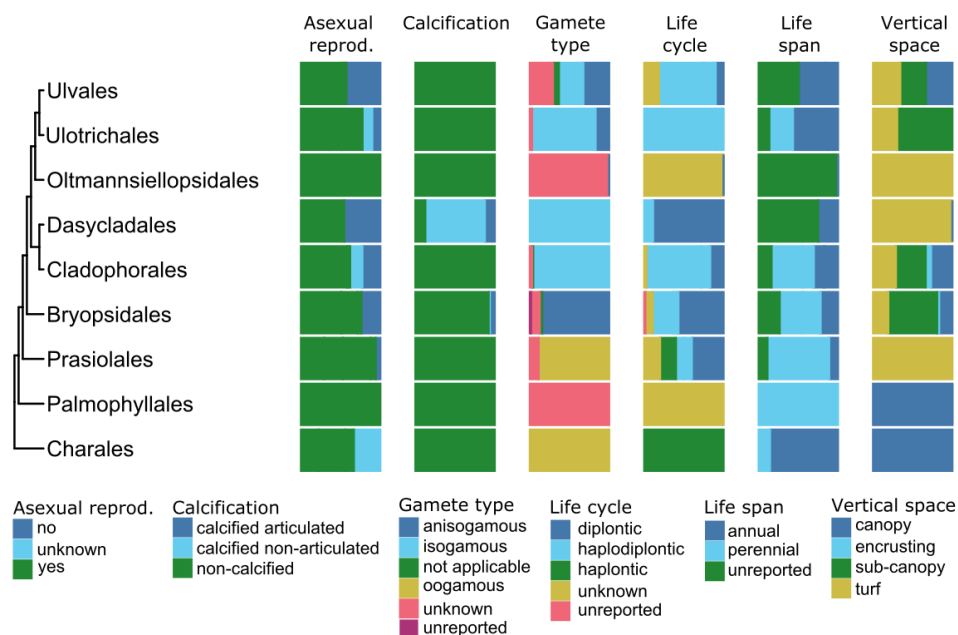


645
 646 **Figure 6: Data coverage for brown seaweeds (Phaeophyceae).** The left side shows a phylogenetic tree at the ordinal
 647 level. Next to the tree the number of species with trait information available in the database is indicated as the total
 648 number (No. of species), the percentage relative to the total number of European species (% europe), and the percentage
 649 relative to the total number of global species (% global). The heatmap indicates the percentage of trait coverage relative
 650 to the total number of European species per order per trait included in the database. At the bottom of the figure,
 651 average species coverage per trait is presented as a percentage of the total number of European (% europe) and global
 652 (% global) species.

653



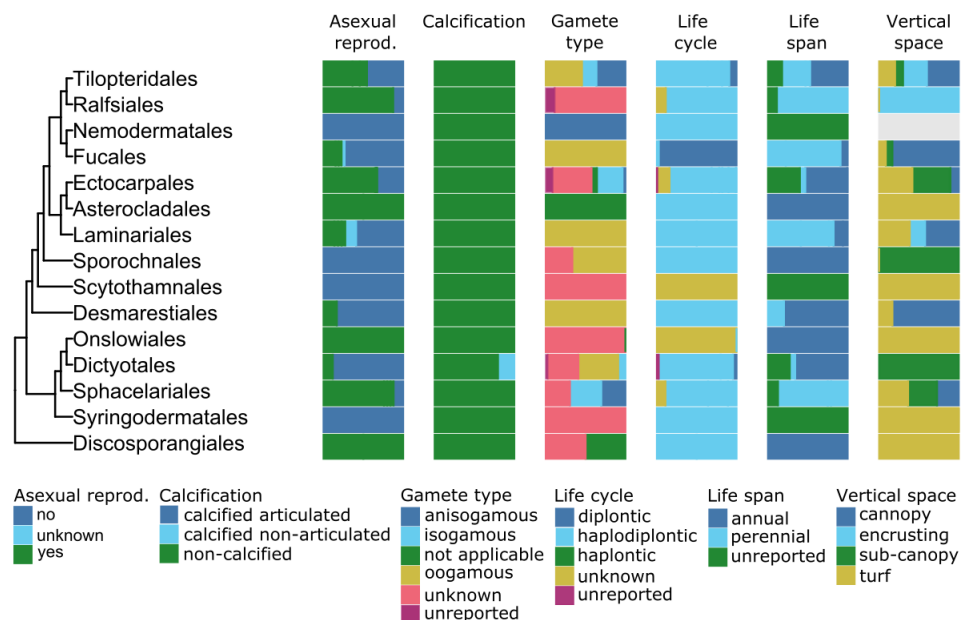
654
 655 **Figure 7: Data coverage for red seaweeds (Rhodophyta).** The left side shows a phylogenetic tree at the ordinal level.
 656 Next to the tree the number of species with trait information available in the database is indicated as the total number
 657 (No. of species), the percentage relative to the total number of European species (% europe), and the percentage relative
 658 to the total number of global species (% global). The heatmap indicates the percentage of trait coverage relative to the
 659 total number of European species per order per trait included in the database. At the bottom of the figure, average
 660 species coverage per trait is presented as a percentage of the total number of European (% europe) and global (%
 661 global) species. Orders with blank bars are not present in European marine waters.



662

663 **Figure 8** Trait variability for a selected set of traits ('Asexual reproduction', 'Calcification', 'Gamete type', 'Life cycle',
 664 'Life span', 'Vertical space') for European green seaweeds. The left side shows a phylogenetic tree at the ordinal level.
 665 On the right stacked barplots indicate trait variability as the proportion of species exhibiting a certain trait value by
 666 order and by trait.

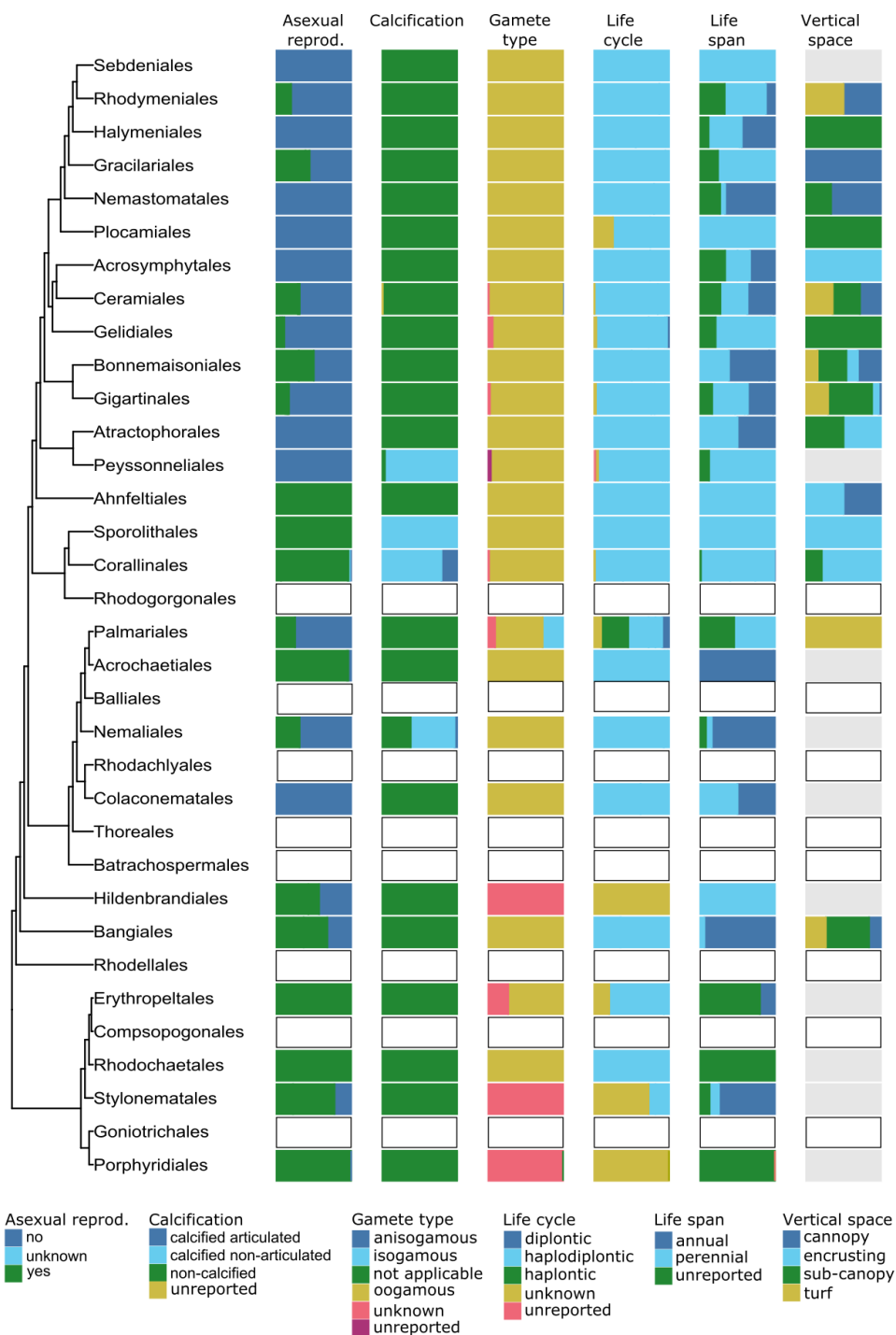
667



668

669 **Figure 9** Trait variability for a selected set of traits ('Asexual reproduction', 'Calcification', 'Gamete type', 'Life cycle',
 670 'Life span', 'Vertical space') for European brown seaweeds (Phaeophyceae). The left side shows a phylogenetic tree at
 671 the ordinal level. On the right stacked barplots indicate trait variability as the proportion of species exhibiting a certain
 672 trait value by order and by trait. Grey bars indicate missing data.

673



674

675 **Figure 10** Trait variability for a selected set of traits ('Asexual reproduction', 'Calcification', 'Gamete type', 'Life
 676 cycle', 'Life span', 'Vertical space') for European red seaweeds. The left side shows a phylogenetic tree at the ordinal
 677 level. On the right stacked barplots indicate trait variability as the proportion of species exhibiting a certain trait value
 56



678 by order and by trait. Orders with blank bars are not present in European marine waters and grey bars indicate
679 missing data.

680