



**HAL**  
open science

## Evidence of the use of soft footwear in the Gravettian cave of Cussac (Dordogne, France)

Lysianna Ledoux, Gilles Berillon, Nathalie Fourment, Xavier Muth, Jacques Jaubert

► **To cite this version:**

Lysianna Ledoux, Gilles Berillon, Nathalie Fourment, Xavier Muth, Jacques Jaubert. Evidence of the use of soft footwear in the Gravettian cave of Cussac (Dordogne, France). *Scientific Reports*, 2021, 11 (1), pp.22727. 10.1038/s41598-021-02127-z . mnhn-03932964

**HAL Id: mnhn-03932964**

**<https://mnhn.hal.science/mnhn-03932964v1>**

Submitted on 26 Oct 2023

**HAL** is a multi-disciplinary open access archive for the deposit and dissemination of scientific research documents, whether they are published or not. The documents may come from teaching and research institutions in France or abroad, or from public or private research centers.

L'archive ouverte pluridisciplinaire **HAL**, est destinée au dépôt et à la diffusion de documents scientifiques de niveau recherche, publiés ou non, émanant des établissements d'enseignement et de recherche français ou étrangers, des laboratoires publics ou privés.



OPEN

## Evidence of the use of soft footwear in the Gravettian cave of Cussac (Dordogne, France)

Lysianna Ledoux<sup>1✉</sup>, Gilles Berillon<sup>2</sup>, Nathalie Fourment<sup>3</sup>, Xavier Muth<sup>4</sup> & Jacques Jaubert<sup>5</sup>

Humans appear to have regularly worn footwear since at least the Early Upper Palaeolithic. However, due to the perishable nature of footwear, the archaeological record of its presence during the Pleistocene is poor. While footwear would have played an essential role in protecting the foot, it could also have been used as ornamentation and/or as a social marker. Footprints may provide the most relevant insight regarding the origin and function of footwear. Here we report the discovery of footprints in Cussac Cave (southwest France) at 28–31 ka cal BP and the results of a multi-focal approach, including experimentation, that demonstrate that Gravettian people most likely wore footwear while moving through the cave. These singular footprints would constitute one of the oldest cases of indirect evidence for this unusual practice in decorated Palaeolithic caves and reinforce the exceptional nature of Cussac already attested by the presence of monumental engravings and funerary deposits.

The use of footwear is one element of the debate on the origins of clothing. For Pleistocene populations, footwear may have had several functions. While its most pragmatic function would have been to protect the foot from cold temperatures and the ground surface, it may also have played a more symbolic role. Ethnographic data has shown that clothing and footwear can be used as ornamentation and/or social markers<sup>1,2</sup>. Unfortunately, because these fragile perishable remains are rarely found in the Pleistocene archaeological record, this practice is difficult to demonstrate. Our current knowledge is based on indirect archaeological evidence associated with hide working (lithic [drill, borer] and bone tools, including needles)<sup>3</sup> and artistic expressions, such as the Gravettian figurines testifying to the use of textiles<sup>4</sup> or one of the most compelling examples, the Middle Upper Palaeolithic Mal'ta venus<sup>4</sup>. Some textile imprints in clay have also been found at the site of Dolní Věstonice (31–30 ka cal BP) and Pavlov (28–29 ka cal BP).

Nevertheless, few of these elements can be directly associated with the use of footwear<sup>4</sup>. The most suggestive evidence of footwear is the arrangements of beads around the feet of interred individuals at Sungir (Russia), suggesting that they were buried with shoes<sup>5</sup>. Furthermore, anatomo-functional studies of modern human phalanges suggest that footwear appeared during the late Pleistocene<sup>6,7</sup>, though no direct evidence of footwear has been found for these periods. The oldest direct evidence of a leather moccasin-type shoe was found in the cave of Areni-1 (Armenia) and dates only to the Chalcolithic (3627–3377 cal BC)<sup>8</sup>. This question is rarely discussed in ichnology, probably because the great majority of recent studies are focused on barefoot tracks at Pleistocene African and European open-air sites<sup>9–20</sup>. Palaeolithic caves have also long been studied from this perspective due to the presence of barefoot prints in several of them<sup>21–28</sup> (SI Table S1). It is in this context, in the Wahl Gallery of the Fontanet Cave (France), dated to the Magdalenian (15,076–15,398 cal BP)<sup>29</sup>, that the question of footwear was first raised on the basis of a footprint<sup>29</sup>. However, this interpretation has recently been questioned<sup>26,30</sup>. Dated from the Middle Palaeolithic the footprints found in the Theopetra Cave (Greece) also seem to be resulting from the use of footwear<sup>31</sup>. The discovery of Cussac Cave in 2000 and its systematic study since 2009, which has yielded a unique ichnological corpus associated with Gravettian people, provides new insights into this question and the understanding of human behaviour in caves.

<sup>1</sup>Instituto Internacional de Investigaciones Prehistóricas Cantabria, Universidad de Cantabria (IIIPC), Edificio Interfacultativo, Avda. de los Castros, s/n, 39005 Santander, Cantabria, Spain. <sup>2</sup>UMR7194 MNHN–CNRS/Département Homme et Environnement, Musée de l'Homme, Palais de Chaillot, 75016 Paris, France. <sup>3</sup>Musée National de Préhistoire, 1, Rue du Musée, 24620 Les Eyzies, France. <sup>4</sup>Get In Situ, Place R.T. Bosshard 1, 1097 Rieux, Switzerland. <sup>5</sup>Université de Bordeaux, PACEA UMR 5199, B2, Avenue Geoffroy Saint-Hilaire, 33615 Pessac Cedex, France. ✉email: ledouxlysianna@gmail.com

## Contextual setting

Located in Le Buisson-de-Cadouin (Dordogne, France), on the right bank of the Belingou (a tributary of the left bank of the Dordogne River (Fig. 1a), Cussac Cave extends over 1.6 km in a single sub-horizontal gallery. The present entrance is located nearly half-way along this gallery, making access possible in either the upstream (*Branche Amont*) or downstream (*Branche Aval*) direction of the subterranean river (Fig. 1b). This cave is characterized by monumental engravings associated with human remains deposited in bear hibernation nests as well as human and non-human activity traces (torch marks, colour marks, black or red marks, broken concretions, lamps), including prints on the ground<sup>32–34</sup>. Currently, after surveying only about half of the cave, 28 prints have been identified as clearly human. They correspond to complete or incomplete, deep or superficial footprints, handprints, slides and undetermined tracks<sup>30,33</sup> (Fig. 2a). The well-preserved tracks are mostly located on clay taluses, sometimes next to engraved panels, where they are protected from sedimentary deposits. Others in lower areas were covered by decantation clay<sup>30</sup>.

The human presence in the cave has been attributed to the Middle Gravettian. All human evidence (human bones and charcoal) on the floor and wall have been dated to 28–31,000 cal BP<sup>35</sup>. These absolute dates are coherent with the artistic conventions of the engravings, typical of this period, and the lithic and bone technology<sup>36,37</sup>. Marks made by bears always precede human marks and there is no evidence of human presence after this period. Even if the nature of the human skeletal deposits at Cussac is unique, the Gravettian period is already well-known for its burials at several European sites, in contrast to the preceding (Aurignacian) or succeeding (Solutrean) periods. Therefore, the presence of early human footprints in this exceptional context and their study is particularly challenging.

Here, we present the seven complete footprints thus far identified in the cave. These footprints display the main morphological characteristics of human footprints. However, while the area of the digits is well preserved, the digit impression is shallow or absent. This phenomenon is particularly remarkable because in the same cave areas, well-marked fingerprints are present (Fig. 2b), whereas toe prints are always missing. In these cave areas, the footprints consist of partially hollowed spaces that are difficult to characterize. Furthermore, when bear and human tracks are superimposed, the digits of the complete human footprints are absent, whereas the digits are clearly visible on the bear tracks (Fig. 2b). Finally, although flooding was recurrent in some parts of the cave, we have demonstrated through experimentation<sup>38</sup> that this phenomenon alone cannot explain the disappearance of the footprint digits. While the print made by footwear is most likely related to the nature of the footwear itself, it is also determined by the substrate. This footwear-substrate combination has never been quantified in this type of context, however. In this study, we thus test the hypothesis of the use of footwear by the Gravettian people at Cussac by experimentally quantifying the morphology of the footprints made by soft footwear on a clay substrate similar to that of Cussac.

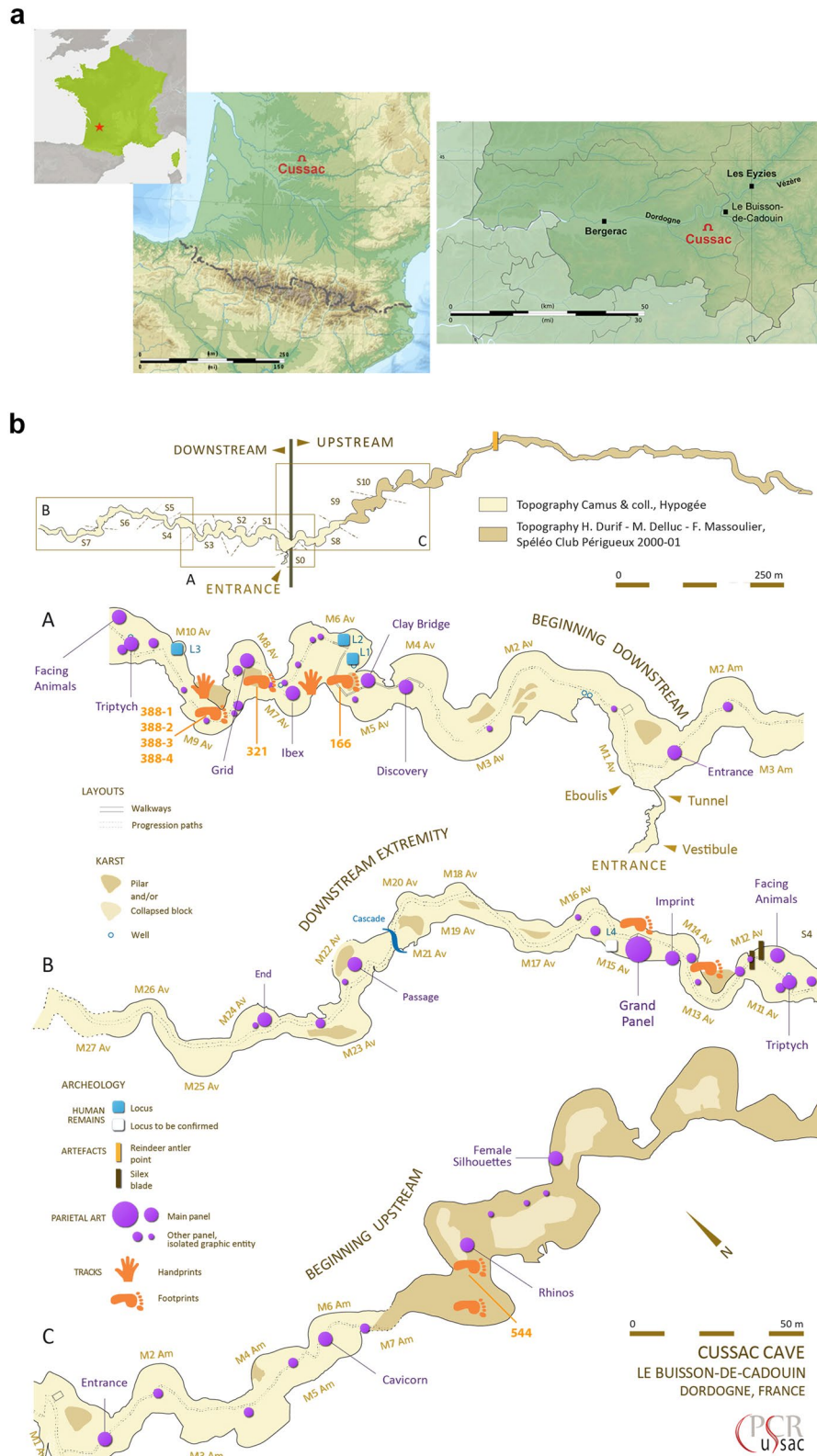
## Results

Among the seven complete footprints, three are isolated (T166, T321, T544), and four form a partial trackway. Two of them are relatively well-preserved (T388-1 and T388-4), while recent trampling has significantly altered the other two (T388-2 and T388-3) (Fig. 3, SI Fig. S1, SI Video 1). All the tracks are formed in a high clay content sediment favourable to track formation (SI Table S2). Their length ranges from 19 to 30 cm and the general morphology of the foot is preserved (Fig. 3 and Table 1). The distal and proximal parts and the medial longitudinal arch are well identifiable, allowing their lateralisation: three left feet and four right feet. Most of these footprints are relatively shallow. The last footprint of the trackway (T388-4) is deep compared to the others; its location on a small clayey bench favoured the foot's penetration through the sediment. Although in some cases the mark of the hallux is visible, no other toe has left an impression regardless of the plasticity of the sediment.

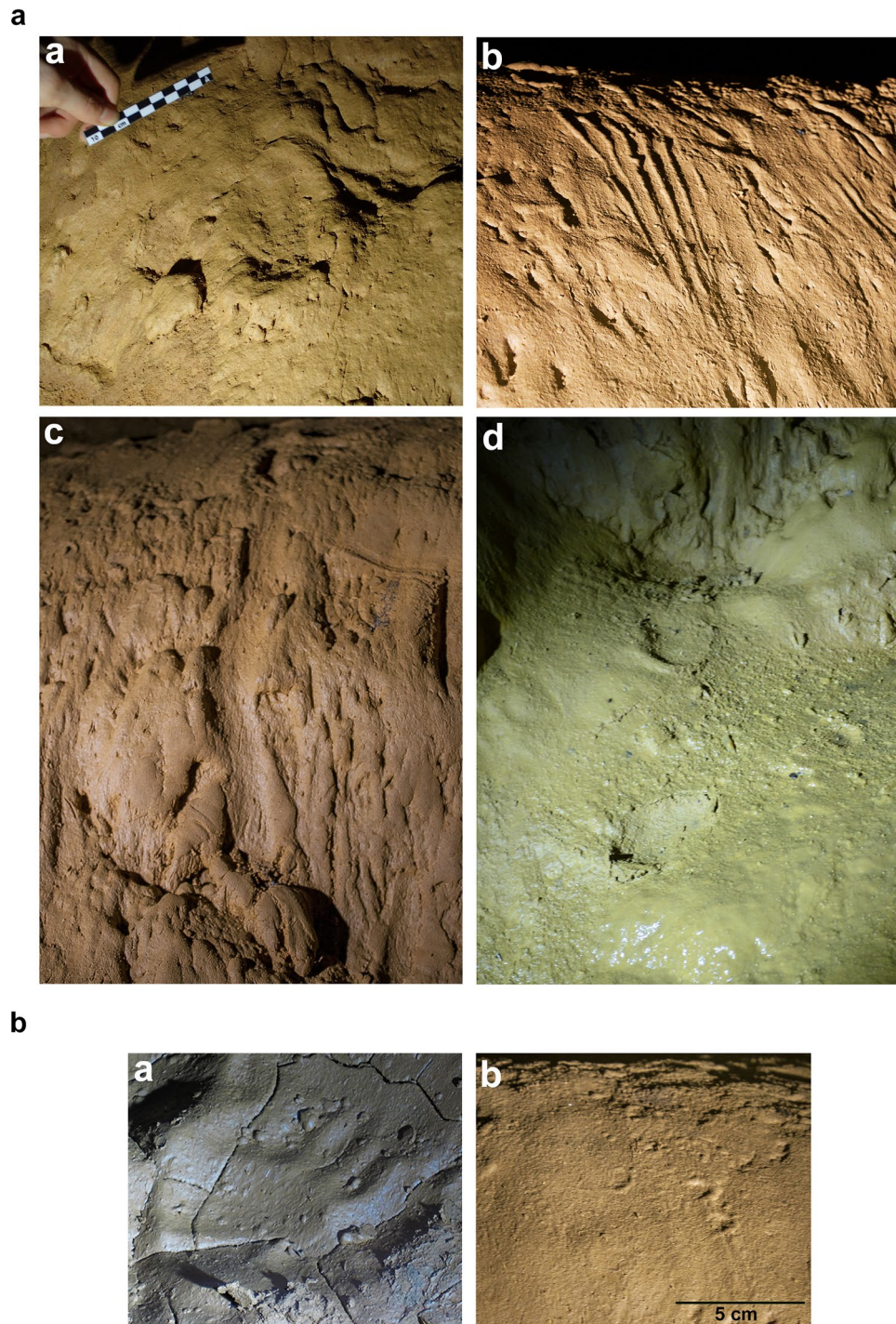
We conducted experiments in a substrate with sedimentary properties very close to those of Cussac, with two moisture contents (SI Table S2 and “Methods”). Original barefoot prints made in this type of sediment show that whatever the moisture content, the characteristics of the general morphology of the foot are clearly visible with details such as well-marked toes. This observation is valid for the two moisture contents tested (Fig. 4). To go further, we tested the influence of soft leather footwear (with and without stuffing) on the footprint morphology using the same sediment and moisture contents. The results demonstrate that although the general morphology of the foot is preserved on the footwear tracks, the use of footwear affects their geometry and biometry. In addition, the footwear tracks tend to become longer and narrower whatever the substrate and with or without stuffing.

In the same way that footprints are almost always longer than the trackmaker's feet—especially when the substrate is compliant and the footprints are deep<sup>39</sup> (Fig. 4 and SI Table S3), the ratio between the length of a footwear print and a barefoot print shows that prints made with footwear are always longer than the barefoot ones, especially when associated with the wettest substrate (Fig. 5a). However, the ratio is more variable when comparing the width of the proximal part of footprints made by footwear with that of barefoot prints (Fig. 5b). This experiment also highlights the presence of digits on the footprints made with footwear without stuffing, particularly when associated with the first substrate (50% moisture content substrate). Due to its higher position, the hallux is the only digit that can be identified on some footprints made with stuffed footwear (Fig. 4). Finally, the profiles and depth maps of our experimental tracks show that almost all the footwear prints appear shallower than the barefoot prints, especially in the distal and proximal parts.

We used the *log-shape ratio* methodology to compare the shape of the best-preserved footprints of Cussac and some experimental footprints (SI Table S4). A global PCA was performed on log-transformed data. The first two principal components explain 94.74% of the variance. While length 1 and distal width drives both axes almost equally, the first axis (76.29% of the variance) is mainly driven by the medium width. Along this axis, the Cussac footprints are projected opposite to the experimental barefoot prints and close to the experimental footwear prints; these footwear prints form an intermediate and distinct but more variable group. The second



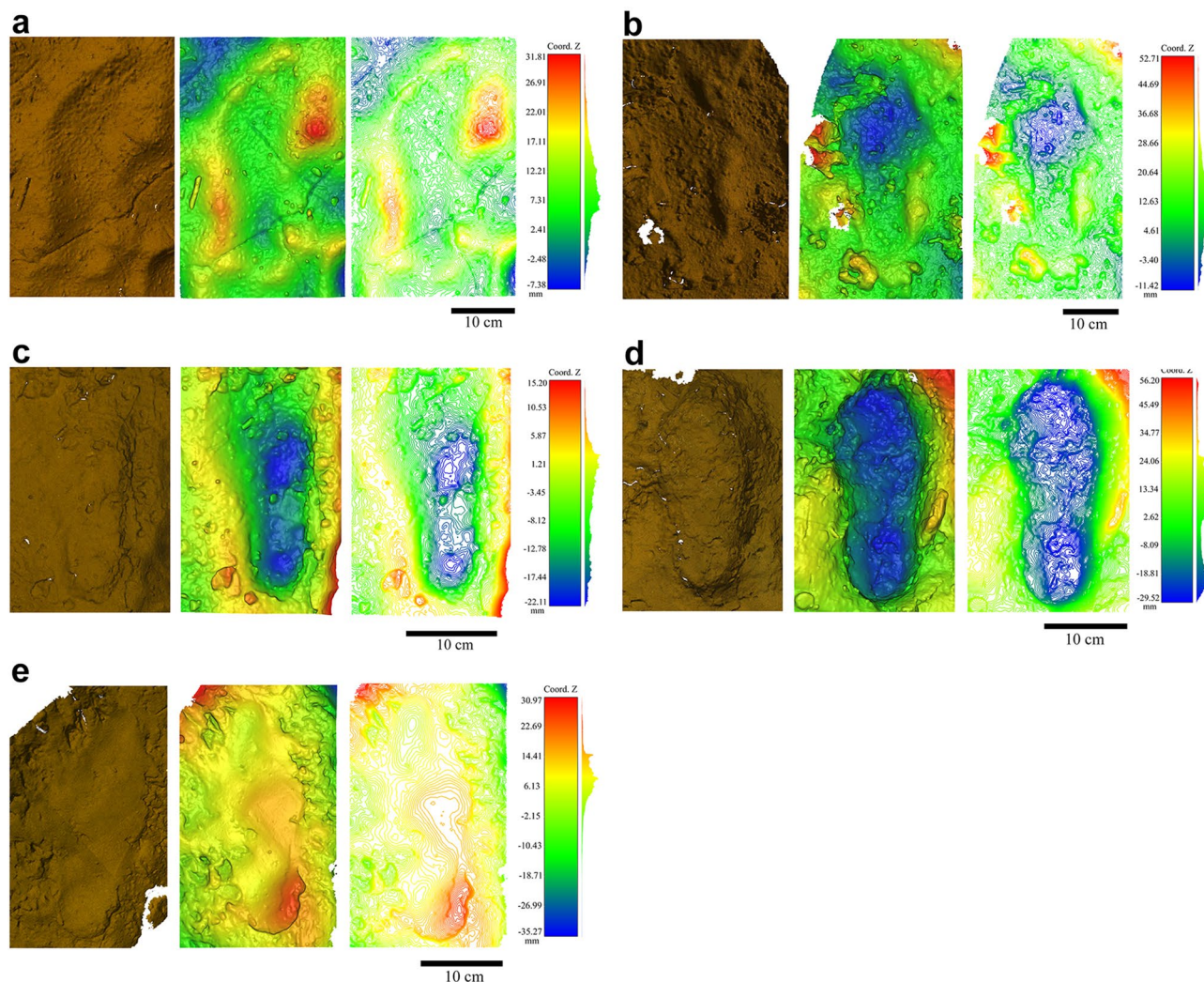
**Figure 1.** Location and topography of Cussac cave. **(a)** Geographic location of Cussac Cave. **(b)** General topography of Cussac Cave (PCR Cussac, doc. H. Camus, Protée, CAD Fr. Lacrampe-Cuyaubère) and location of the tracks (generated in Illustrator v.16.0.0, <https://www.adobe.com/fr/products/illustrator.html>).



**Figure 2.** (a) Examples of the tracks found in Cussac Cave. (a) Human palm print; (b) indeterminate print (fingerprints?) (F. Maksud, PCR Cussac, Ministère de la Culture, France); (c) slipped heel print; (d) two heel prints belonging to a trackway. (N. Fourment, PCR Cussac, Ministère de la Culture, France). (b) Digit details. (a) Manus bear track located in the same area as T166. (a) Human fingerprints located under the Ibx Panel (F. Maksud, PCR Cussac, Ministère de la Culture, France ).

axis (18.45% of the variance) is driven by the proximal width. Along this axis, the three experimental footwear prints located in the upper part of the cloud correspond to the driest clay. Interestingly, the Cussac footprint T544, formed in the most cohesive and firm substrate, projects close to these three tracks. The footprints T388-4, T321, and T166, constitute an isolated cluster close to some experimental footprints (Fig. 6).

In summary, despite inter-individual differences, the results of our multi-focal approach confirm that a firm and cohesive substrate favours the impression of details, especially in the distal foot area where the toes create

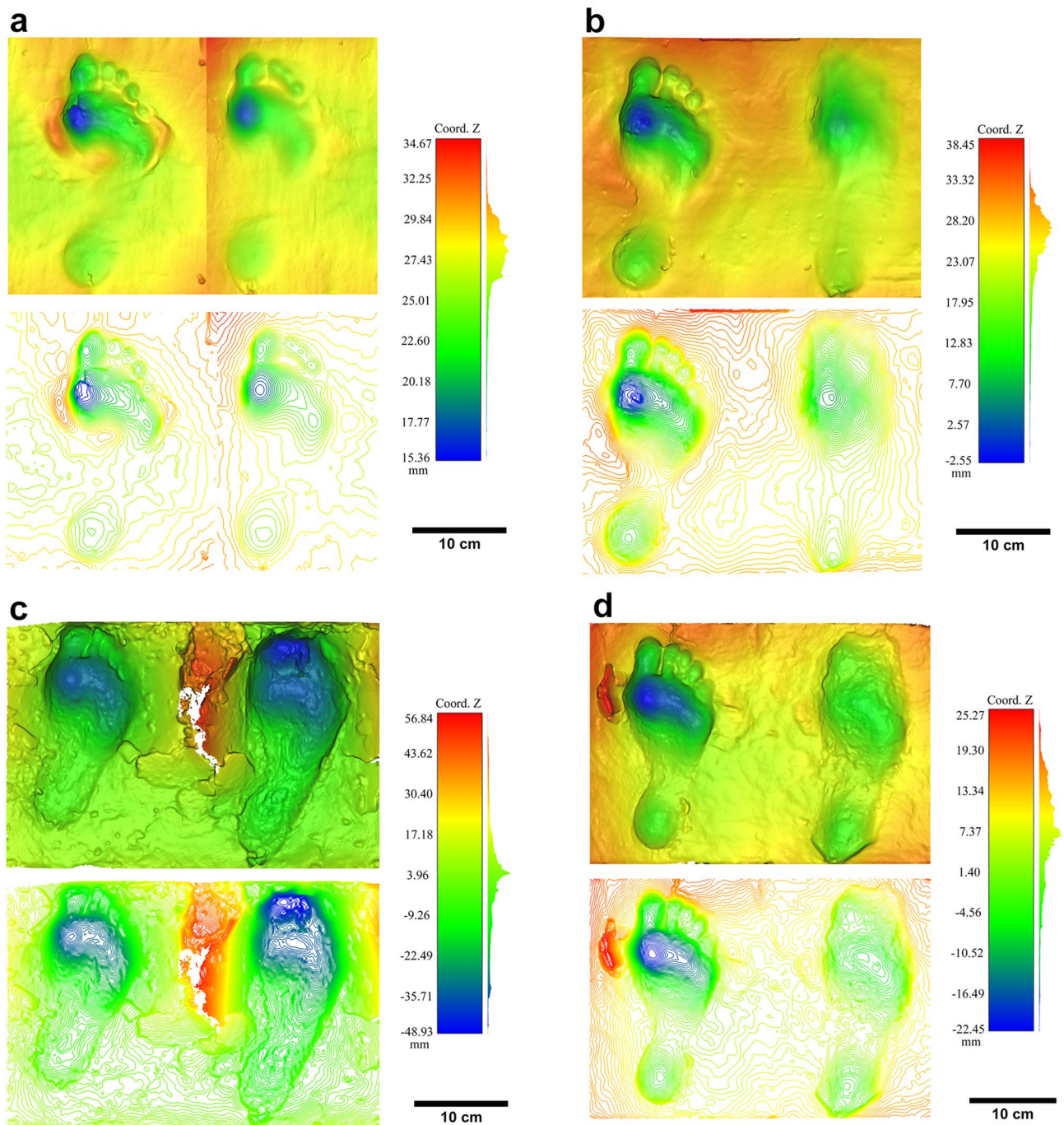


**Figure 3.** True colour images, depth maps and contour maps of the Cussac footprints. (a) T166; (b) T321; (c) T388-1; (d) T388-4; (e) T544.

Footprint	Length 1 (cm)	Distal width (cm)	Middle width (cm)	Proximal width (cm)	Location	Lateralization	Sediment formation	Preservation
T 166	30.1	10	9.4	6.8	Downstream	Left	Clay	Covered with decantation clay
T 321	31	8.9	8.3	6.3	Downstream	Left	Clay	Good
T 388-1	19	4.5	5.6	5.3	Downstream	Righth	Clay	Good
T 388-4	24.8	7.4	6.8	5.7	Downstream	Righth	Clay	Good
T 544	26.5	7.6	5.2	5.1	Upstream	Left	Clay	Altered by modern trampling

**Table 1.** Characteristic of the Cussac Cave footprints (cm).

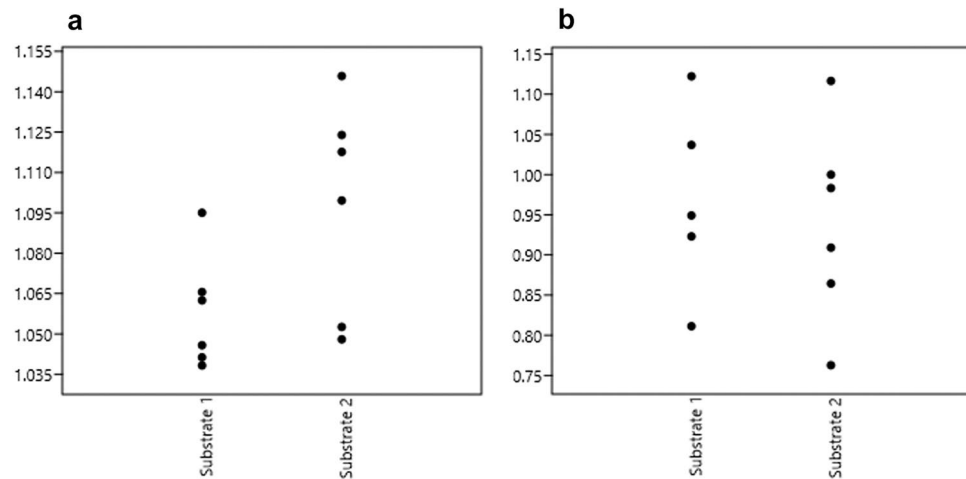
a complex geometry. Moreover, in two distinct moisture contents, footwear impacts the geometry of the footprint specifically in this distal part. When covered with footwear, the distal portion of the foot becomes simpler and more homogeneous (compared to the complex shape formed by the separated toes of a bare foot) and, consequently, the toes are less visible. Similarly, the use of a footwear increases the medium width and simplifies the shape of the print by modifying the impression of the plantar arch. This simplification of morphology also impacts the depth of the footwear prints being shallower than barefoot prints. Therefore, the results of our multi-focal approach converge toward the conclusion that the hypothesis of footwear use is the one that most likely corresponds to the morphology of the Cussac footprints. In this vein, it is significant that, despite a detailed and extensive survey of Cussac Cave, very few footprints have been identified, even under the decorated panels, where most of the activities in the cave are concentrated. The use of footwear can also explain this peculiarity of the Cussac floor.



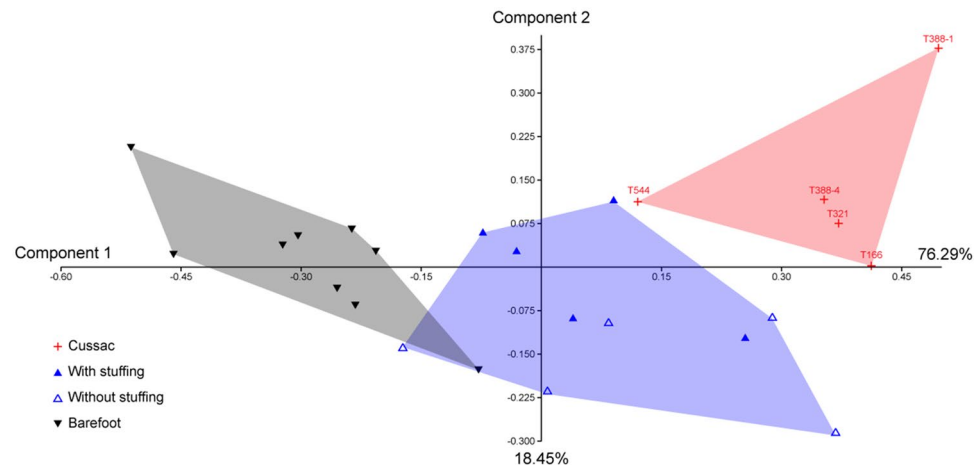
**Figure 4.** Depth maps and contour maps of some experimental barefoot prints and their associated footwear prints. (a) ch2 (without stuffing, moisture content of 50%); (b) ch6 (with stuffing, moisture content of 50%); (c) ch16 (without stuffing, moisture content of 60% 70%); (d) ch18 (stuffing, moisture content of 60% 70%).

## Discussion

Our study of the footprints in Cussac Cave revisits the debate on the origin of footwear and raises new questions about the function of both footwear and that of Palaeolithic caves. In Cussac Cave, the presence within the same gallery of monumental engravings and human deposits reflects its singular nature. This uniqueness is reinforced by the originality of its footprints suggesting the use of footwear inside the cave. Thus, this would be an original behaviour as the footprints found in caves are generally known to be barefoot prints<sup>21–25,27,28,40–43</sup>. Is this specificity of Cussac due to a problem of differential preservation or taphonomy in other sites? Or simply to our ability to identify shod footprints, which are less evident than barefoot prints? If the individuals in Cussac Cave indeed wore footwear, does this reflect a specific function of this cave? Is this function necessarily related to the sepulchral dimension of the cave? Or does it reflect a more practical aspect? Studies are still in progress, these questions currently remain unanswered. However, it is certain that the human remains form part of a



**Figure 5.** Jitter plots of ratios computed on footprints. (a) Ratio between the length of footwear prints and barefoot prints for the two substrate types; (b) ratio between the width of the proximal part of footwear prints and barefoot prints for the two substrate types.



**Figure 6.** Principal component analysis performed on log-transformed data of Cussac and experimental footprints.

coherent whole reinforced by the homogeneity of the dating already carried out. All the evidence suggests a minimal number of incursions, maybe one generation of human groups. Meanwhile, we cannot affirm that the bodies deposited in the bear nests and the individuals who deposited them belonged to the same group<sup>44</sup> although this is the most parsimonious hypothesis in the current state of analysis. Nevertheless, the study of foot bones found in the cave will also shed new light on the question of footwear. However, as is usual for this type of site, the national heritage status of Cussac Cave limits access to the human remains, which are still inventoried and studied but cannot be excavated. It is nevertheless possible that someday we will be able to link the bone remains to footprints. This discovery and study of footprints in Cussac Cave already contributes new information about footwear, for which there is no direct evidence in these periods. It also sheds new light on a specific practice within the restricted space of caves and, more generally, at Palaeolithic societies. Whether footwear was used to protect the feet or as ornamentation, its use in Cussac Cave would be among the earliest indirect evidence of this practice by Pleistocene populations.

## Methods

Our study is based on seven complete footprints identified in Cussac Cave. These footprints were discovered during the survey and inventory of human and animal activity traces, ongoing since 2009<sup>33</sup>.

Experiments were performed using a substrate favourable to the impression of the foot and similar to the substrates of Cussac. They were carried out at the Pôle Mixte de Recherche Archéologique of Campagne and at the PACEA laboratory of the University of Bordeaux (France). The footprints were made in boxes of identical dimensions: 50 × 40 × 25 cm.



The experimental footprints were thus made in a cohesive and moist sediment with a high clay content. This sediment was collected from a cave in the Dordogne region of southwestern France, containing no archaeological remains. Its sedimentary properties are close to those of Cussac (SI Table S2). From this sediment, we tested a moisture content of approximately 50%, and a moisture content varying between 60 and 70%.

The granulometric analysis was performed at the PACEA laboratory using Horiba LA-950 laser diffraction particle size distribution analysers.

The moisture content was calculated on a wet-weight basis using the following formula:

$$\left( \frac{m1 - m2}{m1 - m0} \right) \times 100$$

where,  $m_0$  is the weight of container with lid,  $m_1$  is the weight of container with sample and sample before drying,  $m_2$  is the weight of container with sample and sample after drying.

We used shoes based on those of Areni-1 and the Ötzi mummy<sup>8</sup>. They were made from a single piece of hide leather, approximately 2 mm thick. The leather was wrapped around the foot and attached with a leather strap (SI Fig. S2). In some cases, straw-based stuffing was added.

The experimental footprints were made by three people: a female (Individual 1), 1.69-m-tall, weighing 55 kg, with a foot length of 24 cm; a male (Individual 2), 1.80-m-tall, weighing 80 kg, with a foot length of 24 cm, and; a male (Individual 3), 1.68-m-tall, weighing 75 kg, with a foot length of 23.5 cm. Ethical approval was granted by the PACEA laboratory of the University of Bordeaux (France). All individuals gave informed consent and experiments were conducted in accordance with the American Psychological Association (APA) Ethics Code.

Each individual made four footwear prints. The controlled parameters are the characteristics of the shoe and the moisture content of the substrate. The combinations used are therefore:

- shoe without stuffing + moisture content of 50%
- shoe with stuffing + moisture content of 50%
- shoe without stuffing + moisture content between 60 and 70%
- shoe with stuffing + moisture content between 60 and 70%

For the comparative analysis, each footwear print was associated with a barefoot print (SI Fig. S3). A total of 24 footprints were made (12 footwear prints and 12 bare footprints).

All the footprints (archaeological and experimental) were described in detail and a maximum of seven measurements considered as most indicative of the print morphology were recorded: length 1 (distance between the most distal point of the hallux and the most inferior point of the pternion); length 2 (distance between the most distal point of the second toe and the most inferior point of the pternion); length 3 (distance between the most distal point of the forefoot and the most inferior point of the pternion); digit width (distance between the most medial point of the hallux and the most lateral point of the last toe); distal width (distance between the most medial point and the most lateral point of the forefoot); middle width (distance between the most medial point and the most lateral point of the longitudinal arch), and; proximal width (distance between the most medial point and the most lateral point of the heel). Length 2, length 3, and digit measurements were not recorded because the Cussac footprints' and most of the experimental footwear prints do not have visible digits.

The footprints were photographed using a Nikon D7100 with a 60 mm focal length lens. Each footprint was digitized in 3D using an Artec EVA 3D light scanner (2013; Artec Group, Luxembourg). This device uses the structured light triangulation technique to reconstruct a 3D model of the footprint. The accuracy achieved by this scanner is 0.5 mm at a working distance of 40 cm–1 m and the 3D resolution is up to 0.1 mm. The scanner takes up to 16 frames per second and passes them over to the Artec Studio software<sup>45</sup>, which aligns the frames in real time.

Post-processing was performed on the Artec Studio 9 software to recreate a colour texturized 3D mesh.

The 3D models of the footprints were visualized and compared with Cloud Compare (2.8.1.). We used part of the standard protocol proposed by Falkingham et al.<sup>46</sup> to record, present and archive our 3D data. True colour images, depth maps and contour maps (range of 0.5 mm) were therefore created for each footprint.

A multivariate analysis on transformed data was performed to compare fossil footprints and 19 of the 24 experimental footprints (9 footwear prints and 10 bare footprints). In order to limit the effect of size and consider mostly the shape of the footprints, log-shape ratios were calculated based on the raw linear dimensions of the footprints. A Principal Component Analysis (PCA) was then performed on the log-shape ratios to visualize difference between barefoot print and footwear prints.

## Data availability

The datasets generated during and analysed during the current study are available from the corresponding author on reasonable request.

Received: 2 July 2021; Accepted: 8 November 2021

Published online: 23 November 2021

## References

1. Gilligan, I. *Climate, Clothing, and Agriculture in Prehistory: Linking Evidence, Causes, and Effects* (Cambridge University Press, 2018). <https://doi.org/10.1017/9781108558832>.
2. Hayden, B. L'évolution des premiers vêtements de cuir. in *Le travail du cuir de la Préhistoire à nos jours*, 193–216 (eds. Audouin-Rouzeau, F. & Beyries, S., 2002), XXIIe rencontres internationales d'archéologie et d'histoire d'Antibes. APDCA, Antibes.

3. Soffer, O. Recovering perishable technologies through use wear on tools: Preliminary evidence for Upper Paleolithic weaving and net making. *Curr. Anthropol.* **45**, 407–413. <https://doi.org/10.1086/420907> (2004).
4. Soffer, O., Adovasio, J. M. & Hyland, D. C. The, “Venus” figurines: Textiles, basketry, gender, and status in the Upper Paleolithic. *Curr. Anthropol.* **41**, 511–537. <https://doi.org/10.1086/317381> (2000).
5. Trinkaus, E., Buzhilova, A. P., Mednikova, M. B. & Dobrovolskaya, M. V. *The People of Sungir: Burials, Bodies, and Behavior in the Earlier Upper Paleolithic* (Oxford University Press, 2014). <https://doi.org/10.1017/S095977431600024X>.
6. Trinkaus, E. Anatomical evidence for the antiquity of human footwear use. *J. Archaeol. Sci.* **32**, 1515–1526. <https://doi.org/10.1016/j.jas.2005.04.006> (2005).
7. Trinkaus, E. & Shang, H. Anatomical evidence for the antiquity of human footwear: Tianyuan and Sungir. *J. Archaeol. Sci.* **35**, 1928–1933. <https://doi.org/10.1016/j.jas.2007.12.002> (2008).
8. Pinhasi, R. *et al.* First direct evidence of Chalcolithic Footwear from the Near Eastern Highlands. *PLoS ONE* **5**, e10984. <https://doi.org/10.1371/journal.pone.0010984> (2010).
9. Mietto, P., Avanzini, M. & Rolandi, G. Palaeontology: Human footprints in Pleistocene volcanic ash. *Nature* **422**, 133–133. <https://doi.org/10.1038/422133a> (2003).
10. Bennett, M. R. *et al.* Early hominin foot morphology based on 15-million-year-old footprints from Ileret, Kenya. *Science* **323**, 1197–1201. <https://doi.org/10.1126/science.1168132> (2009).
11. Bennett, M. R., Reynolds, S. C., Morse, S. A. & Budka, M. Laetoli’s lost tracks: 3D generated mean shape and missing footprints. *Sci. Rep.* **6**, 21916. <https://doi.org/10.1038/srep21916> (2016).
12. Raichlen, D. A., Gordon, A. D., Harcourt-Smith, W. E. H., Foster, A. D. & Haas, W. R. Laetoli footprints preserve earliest direct evidence of human-like bipedal biomechanics. *PLoS ONE* **5**, e9769. <https://doi.org/10.1371/journal.pone.0009769> (2010).
13. Ashton, N. *et al.* Hominin footprints from early pleistocene deposits at Happisburgh, UK. *PLoS ONE* <https://doi.org/10.1371/journal.pone.0088329> (2014).
14. Burns, A. *The Prehistoric Footprints at Formby: Discover the Footprints on the Sefton Coast and Take a Glimpse into Prehistoric Britain.* (Sefton Coast Landscape Partnership Scheme, 2014).
15. Masao, F. T. *et al.* New footprints from Laetoli (Tanzania) provide evidence for marked body size variation in early hominins. *Elife* <https://doi.org/10.7554/eLife.19568> (2016).
16. Panarello, A., Santello, L., Farinano, G., Bennett, M. R. & Mietto, P. Walking along the oldest human fossil pathway (Roccamonfina volcano, Central Italy)? *J. Archaeol. Sci. Rep.* **13**, 476–490. <https://doi.org/10.1016/j.jasrep.2017.04.020> (2017).
17. Altamura, F. *et al.* Archaeology and ichnology at Gombore II-2, Melka Kunture, Ethiopia: everyday life of a mixed-age hominin group 700,000 years ago. *Sci. Rep.* **8**, 2815. <https://doi.org/10.1038/s41598-018-21158-7> (2018).
18. Duveau, J., Berillon, G., Verna, C., Laisné, G. & Cliquet, D. The composition of a Neandertal social group revealed by the hominin footprints at Le Rozel (Normandy, France). *PNAS* **116**(39), 19409–19414. <https://doi.org/10.1073/pnas.1901789116> (2019).
19. Mayoral, E. *et al.* Tracking late Pleistocene Neandertals on the Iberian coast. *Sci. Rep.* **11**, 4103. <https://doi.org/10.1038/s41598-021-83413-8> (2021).
20. Hatala, K. G. *et al.* Footprints reveal direct evidence of group behavior and locomotion in *Homo erectus*. *Sci. Rep.* **6**, 28766. <https://doi.org/10.1038/srep28766> (2016).
21. Pales, L. *Les Empreintes de pieds humains dans les cavernes. Les empreintes du réseau nord de la caverne de Niaux (Ariège).* (1976).
22. Duday, H. & Garcia, M. A. Les empreintes de l’Homme préhistorique. La grotte du Pech-Merle à Cabrerets (Lot): une relecture significative des traces de pieds humains. *Bull. de la Soc. Préhist. Française* **208**, 215. <https://doi.org/10.3406/bspf.1983.5445> (1983).
23. Garcia, M.-A., Duday, H. & Courtaud, P. Les empreintes du Réseau Clastres. *Préhist. Ariég.* **45**, 167–174 (1990).
24. Garcia, M.-A. Ichnologie générale de la grotte Chauvet. *Bull. de la Soc. Préhist. Française* **102**, 103–108. <https://doi.org/10.3406/bspf.2005.13341> (2005).
25. OrtegaMartinez, A. I. *et al.* Prehistoric human tracks in Ojo Guareña Cave System (Burgos, Spain): The Sala and Galerías de las Huellas. In *Reading Prehistoric Human Tracks: Methods & Material* (eds Pastoors, A. & Lessen-Erz, T.) (Springer International Publishing, 2021). [https://doi.org/10.1007/978-3-030-60406-6\\_17](https://doi.org/10.1007/978-3-030-60406-6_17).
26. Pastoors, A. *et al.* Tracking in caves: Experience based reading of pleistocene human footprints in French caves. *Camb. Archaeol. J.* **25**, 551–564. <https://doi.org/10.1017/S0959774315000050> (2015).
27. Pastoors, A. *et al.* Experience based reading of Pleistocene human footprints in Pech-Merle. *Quat. Int.* **430**, 155–162. <https://doi.org/10.1016/j.quaint.2016.02.056> (2017).
28. Romano, M. *et al.* A multidisciplinary approach to a unique Palaeolithic human ichnological record from Italy (Bàsura Cave). *Life* <https://doi.org/10.1101/529404> (2019).
29. Clottes, J. *Midi-Pyrénées.* Gallia Préhistoire 613–650 (1975).
30. Ledoux, L. *L’ichnologie préhistorique et les traces d’activités au sein des cavités ornées. Les grottes de Fontanet (Ariège) et de Cussac (Dordogne)* (Université de Bordeaux, 2019).
31. Kyparissi-Apostolika, N. & Manolis, S. Reconsideration of the antiquity of the middle palaeolithic footprints from Theopetra Cave (Thessaly, Greece). In *Reading Prehistoric Human Tracks: Methods & Material* (eds Pastoors, A. & Lessen-Erz, T.) (Springer International Publishing, 2021). [https://doi.org/10.1007/978-3-030-60406-6\\_10](https://doi.org/10.1007/978-3-030-60406-6_10).
32. Jaubert, J. *et al.* Le projet collectif de recherche “grotte de Cussac” (Dordogne, France), étude d’une cavité ornée et à vestiges humains du Gravettien. In *L’art Pléistocène dans le monde* (eds Clottes J., Morales Gonzales M.) (Congrès IFRAO (6–11 septembre 2010, Ariège-Pyrénées, France). Symposium, l’art pléistocène en Europe. (Préhistoire, Arts et société, 2012).
33. Ledoux, L. *et al.* Traces of human and animal activity (TrAcs) in Cussac Cave (Le Buisson-de-Cadouin, Dordogne, France): Preliminary results and perspectives. *Quat. Int.* **430**, 141–154. <https://doi.org/10.1016/j.quaint.2016.06.002> (2017).
34. Fourment, N., Ledoux, L., Maksud, F. & Delluc, M. Sur la piste des ours et des Hommes : les TrAcs dans Cussac. In *Grotte de Cussac -30 000* (eds Jaubert, J., Feruglio, V., Fourment, N.), 165–186, édition Confluences (2020).
35. Jaubert, J. *et al.* The chronology of human and animal presence in the decorated and sepulchral cave of Cussac (France). *Quat. Int.* **432**, 5–24. <https://doi.org/10.1016/j.quaint.2016.01.052> (2017).
36. Feruglio, V., Bourdier, C., Aujoulat, N., Delluc, M. & Jaubert, J. Cussac cave Gravettian parietal art (Dordogne, France): Updated inventories and new insights into Noaillian rock art. *J. Archaeol. Sci. Rep.* **32**, 102427. <https://doi.org/10.1016/j.jasrep.2020.102427> (2020).
37. Feruglio, V. *et al.* Rock art, performance and Palaeolithic cognitive systems. The example of the Grand Panel palimpsest of Cussac Cave, Dordogne, France. *J. Anthropol. Archaeol.* **56**, 101104 (2019).
38. Ledoux, L., Berillon, G., Fourment, N. & Jaubert, J. Reproduce to understand: Experimental approach based on footprints in Cussac Cave (Southwestern France). In *Reading Prehistoric Human Tracks: Methods & Material* (eds Pastoors, A. & Lessen-Erz, T.) (Springer International Publishing, 2021). [https://doi.org/10.1007/978-3-030-60406-6\\_4](https://doi.org/10.1007/978-3-030-60406-6_4).
39. Hatala, K. G., Perry, D. A. & Gatesy, S. M. A biplanar X-ray approach for studying the 3D dynamics of human track formation. *J. Hum. Evol.* **121**, 104–118. <https://doi.org/10.1016/j.jhevol.2018.03.006> (2018).
40. Garcia, M.-A. & Duday, H. Grotte de Foissac (Aveyron) A propos d’une découverte récente ou de l’ichnologie comme mode d’approche des structures préhistoriques en grotte. *Bull. Soc. Préhist. Française.* **80**, 184–187. <https://doi.org/10.3406/bspf.1983.5441> (1983).

41. Galant, P., Ambert, P. & Colomer, A. Prehistoric speleological exploration in the Cave of Aldène in Cesseroas (Hérault, France): Human footprint paths and lighting management. In *Reading Prehistoric Human Tracks: Methods & Material* (eds Pastoors, A. & Lessen-Erz, T.) (Springer International Publishing, 2021). [https://doi.org/10.1007/978-3-030-60406-6\\_15](https://doi.org/10.1007/978-3-030-60406-6_15).
42. Bégouën, R. et al. *Le Sanctuaire secret des bisons. Il y a 14000 ans, dans la caverne du Tuc d'Audoubert*. (Somogy, 2009).
43. Clottes, J. *Les cavernes de Niaux: art préhistorique en Ariège-Pyrénées*. (Errance, 2010).
44. Kacki, S. et al. Complex mortuary dynamics in the Upper Paleolithic of the decorated Grotte de Cussac, France. *PNAS* <https://doi.org/10.1073/pnas.2005242117> (2020).
45. Modabber, A. et al. Evaluation of the accuracy of a mobile and a stationary system for three-dimensional facial scanning. *J. Craniomaxillofac. Surg.* **44**, 1719–1724. <https://doi.org/10.1016/j.jcms.2016.08.008> (2016).
46. Falkingham, P. L. et al. A standard protocol for documenting modern and fossil ichnological data. *Palaeontology* **61**, 469–480. <https://doi.org/10.1111/pala.12373> (2018).

## Acknowledgements

Our work is supported by the “Projet Collectif de Recherche Cussac”, and we thank all the members of its team particularly Frédéric Maksud and Marc Delluc. We are also grateful to the French Ministry of Culture, the LaScArBx, a research programme supported by the ANR (ANR-10-LABX-52), the CNRS–Institut Écologie et Environnement International Research Network IRN–GDRI0870 and the Fyssen Foundation (France). We are also grateful to the University of Bordeaux, the PACEA laboratory (Bordeaux, France), the University of Cantabria and the IIIPC Institute (Santander, Spain). We also thank Mathieu Bosq and Antoine Souron for their contribution to the experiments, Mickaël Baillet for making the shoe, Lucile Crété and Christophe Mallet for their help and advice and Magen O’Farrell for editing.

## Author contributions

L.L.: collected field data, wrote the article with contribution of all authors, conceived the experimental protocol, conducted the experimentation, and conducted the study of the footprints. J.J.: directed the Cussac project, contribute to the article. G.B.: conceived the experimental protocol, contribute to the article. N.F.: collected field data, contribute to the article. X.M.: made the 3D model. All authors reviewed the manuscript.

## Competing interests

The authors declare no competing interests.

## Additional information

**Supplementary Information** The online version contains supplementary material available at <https://doi.org/10.1038/s41598-021-02127-z>.

**Correspondence** and requests for materials should be addressed to L.L.

**Reprints and permissions information** is available at [www.nature.com/reprints](http://www.nature.com/reprints).

**Publisher’s note** Springer Nature remains neutral with regard to jurisdictional claims in published maps and institutional affiliations.



**Open Access** This article is licensed under a Creative Commons Attribution 4.0 International License, which permits use, sharing, adaptation, distribution and reproduction in any medium or format, as long as you give appropriate credit to the original author(s) and the source, provide a link to the Creative Commons licence, and indicate if changes were made. The images or other third party material in this article are included in the article’s Creative Commons licence, unless indicated otherwise in a credit line to the material. If material is not included in the article’s Creative Commons licence and your intended use is not permitted by statutory regulation or exceeds the permitted use, you will need to obtain permission directly from the copyright holder. To view a copy of this licence, visit <http://creativecommons.org/licenses/by/4.0/>.

© The Author(s) 2021