



HAL
open science

Two new species in the fern genus *Lomariopsis* (Lomariopsidaceae) from East Asia

Yi-Hsuan Wu, Chih-Yun Sun, Atsushi Ebihara, Ngan Thi Lu, Germinal
Rouhan, Li-Yaung Kuo

► **To cite this version:**

Yi-Hsuan Wu, Chih-Yun Sun, Atsushi Ebihara, Ngan Thi Lu, Germinal Rouhan, et al.. Two new species in the fern genus *Lomariopsis* (Lomariopsidaceae) from East Asia. *PhytoKeys*, 2021, 187, pp.161-176. 10.3897/phytokeys.187.77035 . mnhn-03500196

HAL Id: mnhn-03500196

<https://mnhn.hal.science/mnhn-03500196>

Submitted on 21 Dec 2021

HAL is a multi-disciplinary open access archive for the deposit and dissemination of scientific research documents, whether they are published or not. The documents may come from teaching and research institutions in France or abroad, or from public or private research centers.

L'archive ouverte pluridisciplinaire **HAL**, est destinée au dépôt et à la diffusion de documents scientifiques de niveau recherche, publiés ou non, émanant des établissements d'enseignement et de recherche français ou étrangers, des laboratoires publics ou privés.

Two new species in the fern genus *Lomariopsis* (Lomariopsidaceae) from East Asia

Yi-Hsuan Wu¹, Chih-Yun Sun², Atsushi Ebihara³,
Ngan Thi Lu^{4,5}, Germinal Rouhan⁶, Li-Yaung Kuo^{1,2}

1 Institute of Molecular & Cellular Biology, National Tsing Hua University, No.101, Sec. 2, Guangfu Rd., Hsinchu City, Taiwan **2** Department of Life Science, National Tsing Hua University, No.101, Sec. 2, Guangfu Rd., Hsinchu City, Taiwan **3** Department of Botany, National Museum of Nature and Science, Amakubo 4–1–1, Tsukuba, Ibaraki, Japan **4** Department of Biology, Vietnam National Museum of Nature, Vietnam Academy of Science and Technology, 18 Hoang Quoc Viet, Hanoi, Vietnam **5** Graduate University of Science and Technology, Vietnam Academy of Science and Technology, 18 Hoang Quoc Viet, Hanoi, Vietnam **6** Institut de Systématique, Evolution, Biodiversité (ISYEB), Muséum national d'Histoire naturelle, CNRS, Sorbonne Université, EPHE, Université des Antilles; CP 39, 57 rue Cuvier 75005 Paris, France

Corresponding author: Li-Yaung Kuo (lykuo@life.nthu.edu.tw)

Academic editor: Blanca León | Received 25 October 2021 | Accepted 19 November 2021 | Published 20 December 2021

Citation: Wu Y-H, Sun C-Y, Ebihara A, Lu NT, Rouhan G, Kuo L-Y (2021) Two new species in the fern genus *Lomariopsis* (Lomariopsidaceae) from East Asia. *PhytoKeys* 187: 161–176. <https://doi.org/10.3897/phytokeys.187.77035>

Abstract

Two East Asian *Lomariopsis* (Lomariopsidaceae, Polypodiales) species, *Lomariopsis moorei* and *Lomariopsis longini*, which were previously misidentified as *L. spectabilis*, are here described as new species based on evidence from morphological characters and a molecular phylogeny. The two species differ from the three other described species in East Asia by their venation, pinna shapes, and perine morphology. A phylogeny based on a combined dataset of three chloroplast regions (*rbcL*+*rps4-trnS* + *trnL-L-F*) showed that *L. moorei* and *L. longini* each formed a well-supported monophyletic group which was distantly related to both *L. spectabilis* and the other morphologically similar East Asian species, *L. boninensis*.

Keywords

Cryptic species, independent gametophyte, *Lomariopsis boninensis*, *Lomariopsis longini*, *Lomariopsis moorei*, *Lomariopsis spectabilis*, phylogeny, systematics

Introduction

Lomariopsis Fée is the most species rich genus in the fern family Lomariopsidaceae and contains approximately 60 spp., accounting for 85% of the family (PPG I 2016). This genus has a wide distribution in tropical and subtropical regions; there are 15 species in the Neotropics (Moran 2000), nine species in Africa (Roux 2009), 11 species in the islands of the Indian Ocean (Holttum 1939b; Roux 2009; Rakotondrainibe and Jouy 2017), and 12 species in Asia and the Oceanian region (Holttum 1932, 1939a, 1966, 1978). The latest phylogeny of *Lomariopsis* included 24 species (ca. 40% of the species diversity in *Lomariopsis*), but only two species from Asia and the Oceanian region have been sampled (Chen et al. 2017) while the vast majority (ca. 10 species) from these areas have not yet been surveyed. In addition, because gametophytes of *Lomariopsis* species are able to establish as long-lived, asexual colonies in the wild (Watkins and Moran 2019), several species are found as gametophyte-only populations, which is called independent gametophytes (Pinson et al. 2017). In Japan and Taiwan, gametophytes of unknown species have been also reported (Ebihara et al. 2013; Wu et al. in press), a finding which further points out that the efforts of systematics research for Asian *Lomariopsis* remains inadequate, and there might have been undocumented and cryptic species.

To investigate phylogenetically *Lomariopsis* from these poorly sampled areas, we sampled most Asian and Oceanian species, including all species in East Asia where two previously unidentified species were discovered. They both had been misidentified as *L. spectabilis* Mett. One was from Chiayi County in Taiwan and Hainan Island in China, and the other one was from northern Vietnam and west southern China. They are superficially similar to two Asian species, *L. boninensis* Nakai and *L. spectabilis* in morphology. In this study, we presented a new *Lomariopsis* phylogeny supplied with comprehensive East Asian sampling, and reevaluated diagnostic characters leading to the description of these species.

Materials and methods

Perine morphology and spore number in sporangia

Spores were taken from mature sporangia and fixed on double-sided tape, and then gold coated with a sputter-coater for 1–3 min. Spores were subsequently examined with a tabletop SEM (TM 3000; Hitachi, Ibaraki, Japan).

To examine the spore number per sporangium, at least five mature, unopened sporangia per specimen were collected. These sporangia were broken individually, and we counted the number of spores inside under a stereomicroscope.

DNA extraction and chloroplast DNA region sequencing

Twenty-nine samples were included in our molecular phylogenetic study. Voucher information is provided in Appendix 1 (i.e., those samples noted with *). Total DNA

extraction was done following the modified CTAB protocol of Kuo (2015). Three chloroplast (cp) regions were amplified and sequenced: *trnL-L-F* (*trnL* gene + *trnL-trnF* intergenic spacer), the gene *rbcl*, and *rps4-trnS* (*rps4* gene + intergenic spacer), which were also used in previous phylogenies of *Lomariopsis* and Lomariopsidaceae (Rouhan et al. 2007; Li et al. 2009; Chen et al. 2017). The primers used for PCR amplification and sequencing were: FernL 1Ir1 (Li et al. 2010) and f (Taberlet et al. 1991) for *trnL-L-F*; rps5 (Nadot et al. 1994) and trnS (Souza-Chies et al. 1997) for *rps4-trnS*; af (Hasebe et al. 1994) and 1379R (Pryer et al. 2001) for *rbcl*. PCR amplifications were prepared in 15 μ L reactions each containing 20 ng of genomic DNA, 1 \times SuperRed PCR Master Mix RED (TOOLS, Newtaipei City, Taiwan) and 0.5 μ M of each primer. A typical amplification program began with one initial denaturation step for 5 min at 94 $^{\circ}$ C then 35 cycles of 1 min at 94 $^{\circ}$ C, 30 s at 55 $^{\circ}$ C, and 1 min at 72 $^{\circ}$ C followed by a final extension of 10 min at 72 $^{\circ}$ C and was performed on a SimpliAmp Thermal Cycler. PCR products were cleaned using ExoSAP-IT (Thermo Fisher Scientific, Waltham, Massachusetts, USA), and then sequenced with the same PCR primers with an ABI 3730XL (Thermo Fisher Scientific, Waltham, Massachusetts, USA) by the Genomics BioSci. & Tech. company in Taiwan. GenBank accession numbers of the sequences are listed in Appendix 1.

Phylogenetic analyses

In total, we sampled 35 *Lomariopsis* species, including African/Malagasy and Neotropical members sequenced in previous studies (Rouhan et al. 2007; Lehtonen and Cárdenas 2019), and representatives from the three remaining Lomariopsidaceae genera (Chen et al. 2017) as outgroups. Importantly, our *Lomariopsis* sampling covered almost all Asian and Oceanian species (Holtum 1932, 1939a, 1939b, 1978, Moran 2000), including four of which were phylogenetically investigated for the first time. Before this study, three species were known to be distributed in East Asia: *L. lineata* (C.Presl) Holtum (syn. *L. cochinchinensis* Fée.), *L. chinensis* Ching, and *L. boninensis*. The materials of East Asian "*L. spectabilis*" belonged to either *L. boninensis* or one of the two new species described here. Except for *L. chinensis*, all East Asian species were included in our sampling. Voucher information for all samples is provided in Appendix 1. The sequences were aligned using MUSCLE (Edgar 2004) as implemented in AliView (Larsson 2014). The alignment of every coding gene was further divided into three partitions based on the codon positions. The portions of *rps4-trnS* IGS (intergenic spacer), *trnL* gene, and *trnL-F*IGS were each treated as an independent partition as well. In the phylogenetic analyses, each partition was assigned the appropriate substitution model, which was inferred by ModelFinder (Kalyaanamoorthy et al. 2017) and using the Bayesian information criterion (BIC, Schwarz 1978).

We used IQtree 1.6.8 (Nguyen et al. 2015) to infer maximum likelihood (ML) phylogenies with 1,000 standard bootstrap replicates. The Bayesian phylogenetic analysis was performed using Mr Bayes 3.2.7 (Ronquist et al. 2012). Two simultaneous runs were carried out with four chains (5×10^6 generations each). Each chain was

Table 1. Morphological comparisons of the two new *Lomariopsis* species with their Asian morphologically similar relatives.

Characters	<i>L. moorei</i>	<i>L. longini</i>	<i>L. boninensis</i>	<i>L. spectabilis</i>
Vein apices ending at the laminar margins	yes	no	yes	yes
Widest part at upper pinna	<1/2	<1/3	<1/2	~1/2
Stipe scales	dark brown, narrowly lanceolate (usually < 2 mm wide)	dark brown, broadly lanceolate (usually >3 mm wide)	dark brown, broadly lanceolate (usually >2 mm wide)	light brown, narrowly lanceolate (usually <2 mm wide)
Fertile pinna pairs	10–14	3–9	4–16	6–14
Swollen ring on articulate at abaxial side, especially upper pinnae (Fig. 6)	obvious	obvious	inconspicuous	inconspicuous
Spore perine (Fig. 4)	spiny	folded	spiny	crystate
Spore number per sporangium	64	32	64	16 or 32

sampled every 1,000 generations. Log likelihoods of MCMC runs were inspected in Tracer 1.6 (Rambaut and Drummond 2013) to confirm their convergence. The first 25% of the generations were conservatively discarded as burn-in.

Results

The combined cpDNA alignment matrix included 3,817 nucleotide sites: *rbcL* (1,431 bp), *rps4-trnS* (1,233 bp), and *trnL-L-F* (1,153 bp) with 27.5% of variable sites. In our phylogeny (Fig. 1), the two new species, *L. moorei* and *L. longini*, each formed a monophyletic group, and were genetically distant from *L. boninensis*, *L. spectabilis*, and other Asian and Oceanian species. The line drawings of the two new species are provided in Figs 2 and 3, and their morphological comparisons with the two Asian relatives are summarized in Table 1. Perine morphology of the four species is shown in Fig. 4.

Taxonomic treatment

Lomariopsis longini L.Y.Kuo & Y.H.Wu, sp. nov.

urn:lsid:ipni.org:names:77234526-1

Figs 2, 5A

Diagnosis. *Lomariopsis longini* differs from the other similar species, *L. spectabilis*, *L. boninensis*, and *L. moorei*, by its lanceolate upper sterile pinna with the widest portion occurring below the middle of the pinna, and the veins end ca. 0.5 mm before the margins.

Type. VIETNAM. Ha Tinh. Huong Son District: Son Kim Municipality, Rao Bun stream, 4 May 2004, P.K. Loc 5095 (holotype: P [P00888363]! isotype: MO!).

Description. Rhizomes stramineous, 0.7–1.2 cm in diam., densely scaly; rhizome scales brown (but blackened at point of attachment), lanceolate, ca. 4–9 × 1.5–3.7 mm. Fronds 1-pinnate, leathery, mature laminae pinnate, dimorphic. Sterile fronds 30–60 cm long, stipes stramineous, 10–20 cm, grooved adaxially, base with scattered

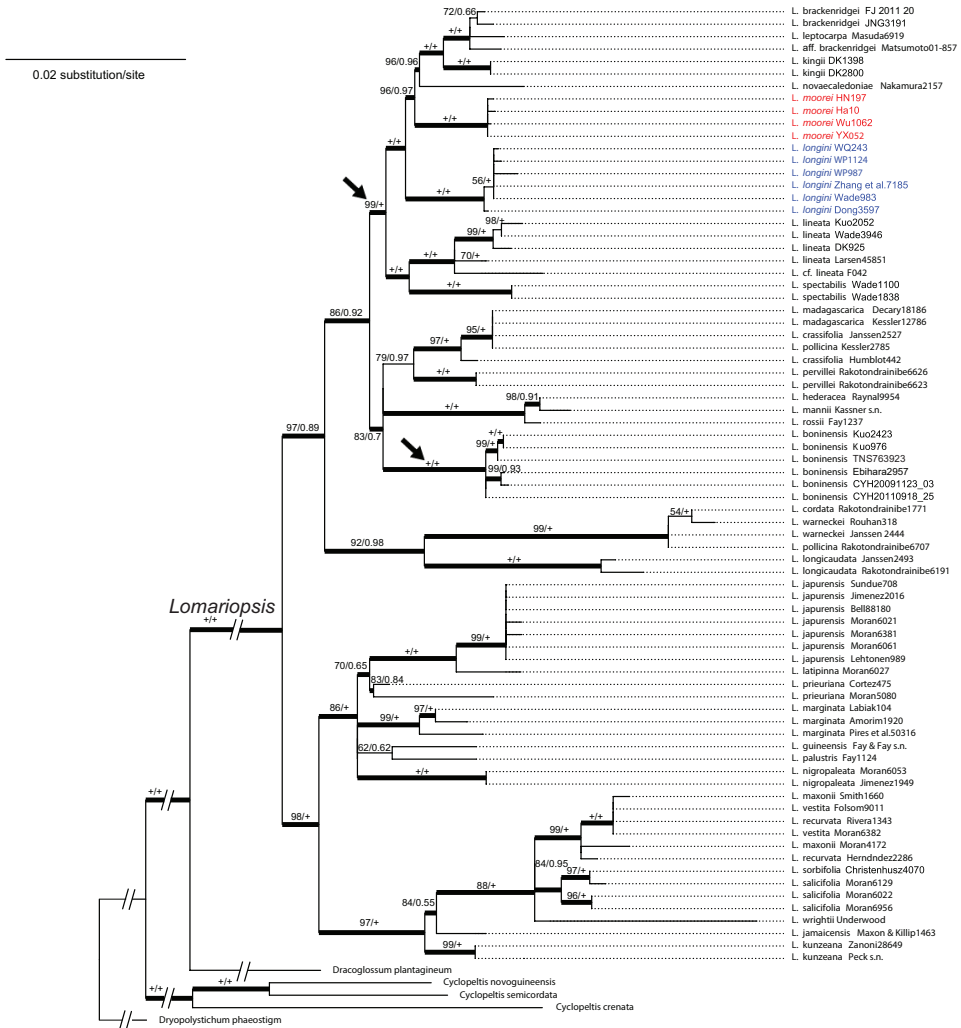


Figure 1. Maximum likelihood (ML) tree based on the cpDNA *rbcL* + *rps4-trnS* + *trnL-L-F* dataset. Bootstrap supports (BS) and Bayesian inference posterior probabilities (BI PP) are indicated on each branch as BS/BI PP. The arrows indicate the clades consisting of Asian and Oceanian species.

scales, lateral pinnae 3–9 pairs, lanceolate, widest in the lower third, 7–16 × 1.5–1.7 cm, apex acuminate; pinna bases cuneate and decurrent, margins entire; lateral pinnae articulate to rachis, swollen ring on abaxial articulation, terminal pinna with a similar size as lateral pinnae, not articulate; upper part of rachis narrowly winged; veins free, simple or furcate, oblique, not extended to margin. Fertile laminae similar to sterile laminae but pinnae much contracted; pinnae linear, 10–20 × ca. 0.2 cm, equilateral, stalks 0.5–1.1 cm, pinna rachis articulate. Sori acrostichoid. Spores 32 per sporangium, perine with cristae.



Figure 2. Illustration of *Lomariopsis longini* L.Y.Kuo & Y.H.Wu, sp. nov., based on the holotype *P.K. Loc* et al. 5095 (P00888363).

Paratypes. VIETNAM. Nghe An Province: 28 Oct 2014, *L.B. Zhang, L. Zhang & N.T. Lu* 7185 (CDBI, MO, VNMN); Quang Binh Province: Bo Trach District, Phong Nha-ke Bang National Park, 7 Dec 2004, *S.K. Wu and L.K. Phan* WP897 (KUN); 13 Dec 2004,

WP1124 (KUN); Quang Tri Province: Dakrong District, Trieu Nguyen Commune, 4 Nov 2009, *Y.H. Chang 20091104-005* (TAIF); 2 Nov 2009, *C.W. Chen Wade 983* (TAIF); Vinh Phuc Province: Tam Dao District, Tam Dao National Park, 14 Dec 2010, *L.Y. Kuo 1862* (TAIF, VNMN). CHINA. Yunnan Province: 25 Aug 2014, *Q. Wei WQ243* (KUN); 2 Sep 2011, *S.Y. Dong 3597* (IBSC); 28 Mar 1987, *W.M. Ju et H.C. Yan Ju and Yan 21930* (IBK).

Distribution. Northern Vietnam, west southern China (Yunnan).

Ecology. In shaded places, understory of evergreen broad leaf forests, below 1,000 m in elevation.

Etymology. The lanceolate shape of the terminal pinnae of sterile leaves is similar to the holy lance, which is also called Lance of Longinus.

***Lomariopsis moorei* Y.H.Wu & L.Y.Kuo, sp. nov.**

urn:lsid:ipni.org:names:77234527-1

Figs 3, 5B, 6A

Diagnosis. *Lomariopsis moorei* is most similar to *L. boninensis*, but scales on stipes are narrower (usually < 2 mm) in *L. moorei* (Fig. 5B) and broader (usually > 2 mm) in *L. boninensis*. The swollen ring at the region of articulation on the abaxial side (especially upper pinnae) is more obvious in *L. moorei* (Table 1; Fig. 6A).

Type. TAIWAN. Chiayi County: Dapu Township, Zengwen Reservoir, 9 November 2020, *Y.H. Wu YX052* (holotype: TAIF! isotype: TAIF!).

Description. Rhizomes rufous, 1.0–1.2 cm in diam., densely scaly; rhizome scales reddish brown (but blackened at point of attachment), narrowly lanceolate, ca. 4–6 × 0.9–2.2 mm. Fronds 1-pinnate, leathery, juvenile sterile laminae simple, shortly stalked, narrowly lanceolate, 20–25 × 1.0–1.5 cm, base narrowly cuneate, apex acute; mature lamina pinnate, dimorphic. Sterile fronds 30–50 cm long, stipes green, 10–20 cm, grooved adaxially, base with scattered scales, lateral pinnae 6–14 pairs, 1–5 cm apart, narrowly lanceolate, widest in the proximal half, 14–21 × 1.5–2.2 cm, narrowly cuneate, apex acute, base cuneate and decurrent, margin entire or slightly undulate; lateral pinnae articulate to rachis, swollen ring on abaxial articulation, terminal pinna 16–27 × 1.5–2.2 cm, not articulate; upper part of rachis narrowly winged; veins free, simple or furcate, oblique. Fertile laminae similar to sterile laminae but pinnae much contracted; pinnae linear, 10–20 × ca. 0.3 cm, equilateral, pinna rachis 0.3–0.8 cm wide, rachis articulate. Sori acrostichoid; perine consisting with glandular projections. Spores green (= chlorophyllous) and spiny, 64 per sporangium.

Paratypes. TAIWAN. Chiayi County: Dapu Township, Zengwen Reservoir, 9 Nov 2020, *Y.H. Wu YX053* (TAIF). CHINA. Hainan Province: Wuzhishan City, Mt. Wuzhi National Nature Reserve, 16 July 2007, *Y.S. Chao 1211* (TAIF); Mt. Diaoluo, 27 Feb 2012, *W.H. Wu 1062* (TAIF); 21 Nov 2000, *G.M. Zhang et D. Li 117* (PE); 14 Dec 2003, *S.Y. Dong 1045* (PE).

Distribution. Taiwan (Chiayi County) and China (Hainan Is.).

Ecology. In shaded places, understory of evergreen broadleaf forests, below 1,000m in elevation.



Figure 3. Illustration of *Lomariopsis moorei* Y.H. Wu & L.Y. Kuo, sp. nov., based on the holotype Y.H. Wu YX052 (TAIF). A fallen fertile pinna is at the left bottom.

Etymology. The name *moorei* is dedicated to Dr./Mr. Shann-Jye Moore (1966–2010), an enthusiastic fern taxonomist and knowledgeable pteridologist from Taiwan. The Mr. Shann-Jye Moore Memorial Scholarship has been established by the Taiwan

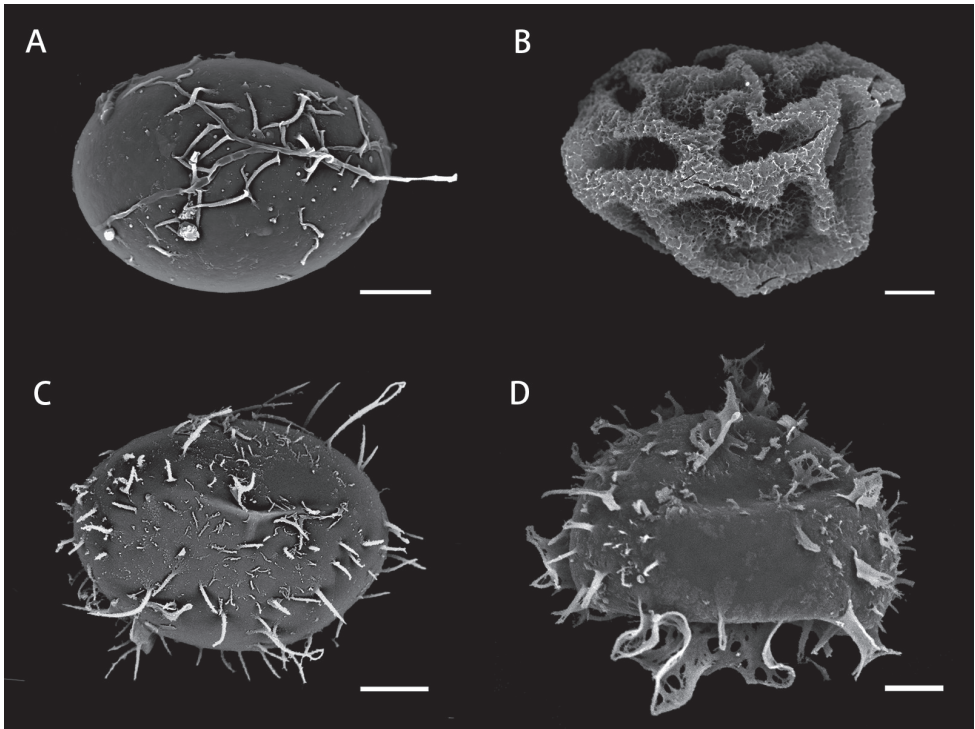


Figure 4. Spore perine morphology by SEM **A** *Lomariopsis moorei* **B** *L. longini* **C** *L. boninensis* **D** *L. spectabilis*. Scale bars: 15 μ m.

Society of Plant Systematics to commemorate his passions, and to support Taiwanese students studying the systematics of ferns and lycophytes.

Note. We have not yet found entire sporophyll from the type locality, but fallen fertile pinnae on 14 Aug 2020 (Fig. 3), which contained intact sporangia with green spores. Although mature sporophytes were found to have a restricted distribution in Taiwan, independent gametophytes of this species were found throughout Taiwan Main Is using a DNA-identification approach to survey gametophyte populations (Wu et al. in press).

Discussion

In previous molecular phylogenies of *Lomariopsis*, none of Oceanian species were included, and *L. lineata* and *L. spectabilis* (including the misidentified *L. boninensis* and *L. longini*) were the only Asian species (Rouhan et al. 2007; Li et al. 2009; Chen et al. 2017). Here, with a comprehensive sampling in these areas, the present phylogeny (Fig. 1) provides new insights into the evolutionary relationships and systematics for *Lomariopsis* species from these areas. In the present tree, the nine Asian/Oceanian species are retrieved into two well-supported clades. The first clade consists of *L. boninensis* only, while the second clade accommodates the remaining

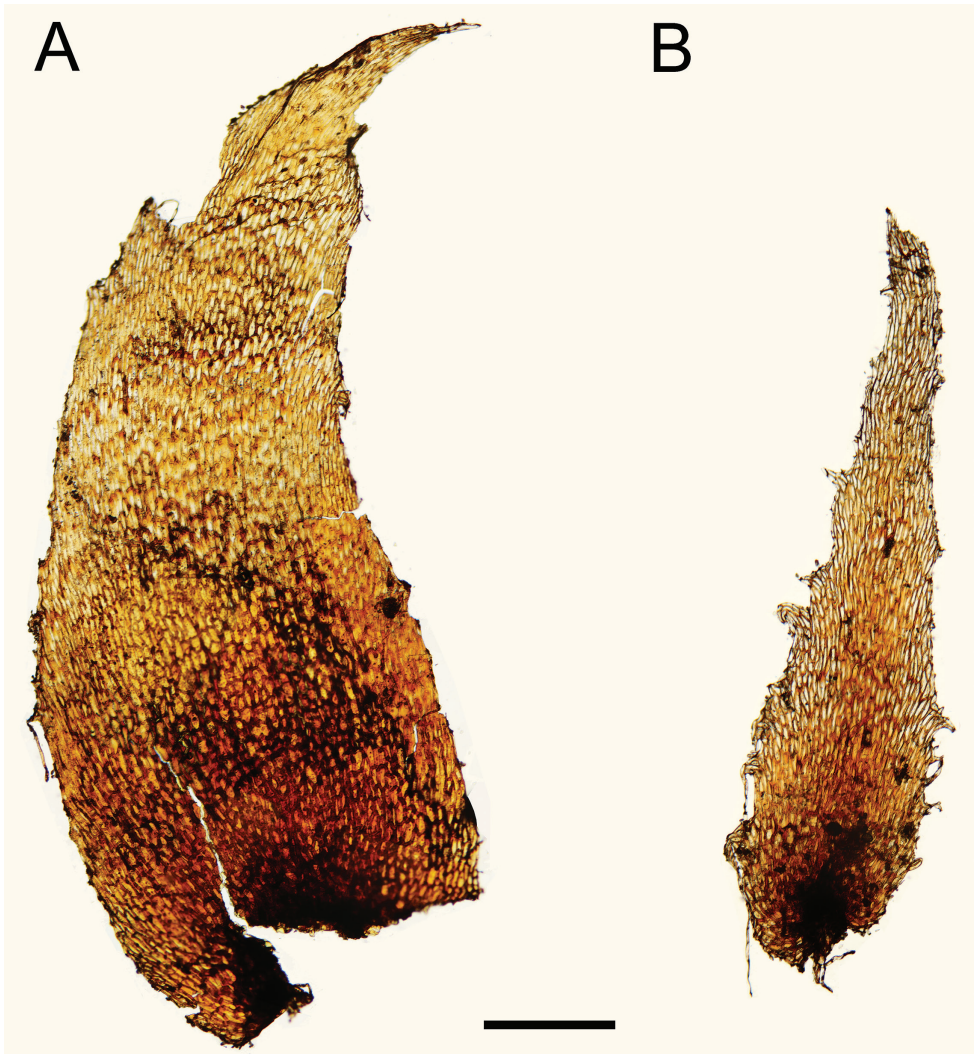


Figure 5. Stipe scales **A** *Lomariopsis longini* (L.Y. Kuo1862, TAIF) **B** *Lomariopsis moorei* (Y.H. Wu YX052, TAIF). Scale bar: 1 mm.

eight species. These Asian and Oceanian clades are either nested within, or closely related to other paleotropical species (Africa and Madagascar), but their inter-clade relationships remain unclear (Fig. 1). Data from additional genetic regions will be necessary to better resolve the uncertainties of these nodes, and hence to confirm biogeographical origin(s) of Asian/Oceanian taxa. Among all six described East Asian species, *L. chinensis* is the only one missing from the current phylogeny. To the best of our knowledge, this species has only been collected once, as the type collections. Despite the lack of phylogenetic information, *L. chinensis* is morphologically unique in the genus and easily distinguished from other *Lomariopsis* species because of its reticulate leaf venation.

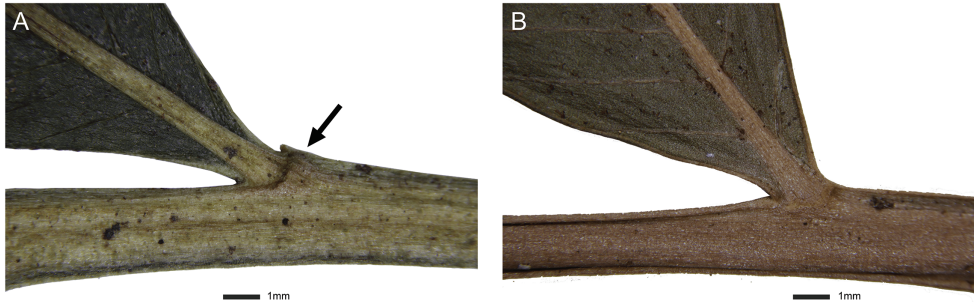


Figure 6. Articulation of upper pinnae (abaxial surface) to the rachis **A** *Lomariopsis moorei* (Y.H. Wu YX052, TAIF) **B** *Lomariopsis boninensis* (TNS790636).

Lomariopsis species diversity in Asia and Oceania could still be underestimated, and more undocumented species could be eventually revealed by phylogenetic analyses using multiple specimens in each morphologically-defined species, similar to the case of discovering the two new species here described. Indeed, *L. moorei* and *L. longini*, together with *L. boninensis*, are genetically distant taxa in East Asia even if all three have been long misidentified and confused under a single name of the South East Asian species, *L. spectabilis*, due to their overall similar morphology (DeVol and Kuo 1975; Tsai and Shieh 1994; Iwatsuki et al. 1995; Yang and Liu 2002; Li et al. 2009; Phan 2010; Xing et al. 2013; Knapp 2014; Chen et al. 2017; Ebihara 2017; TPG 2019). However, clear molecular phylogenetic results spurred us to seek other characters supporting the distinction between these lineages, and these actual species now can be identified based on microscopic characters (Table 1). These characters include perine ornamentation, which has been revealed to have highly diversified forms in *Lomariopsis* (Rouhan et al. 2007). Additionally, we found that the spore number per sporangium varies among these species, which can also help in distinguishing species. However, unlike most cases in ferns of the Polypodiales, such a reduction in the number of spores in sporangia (e.g., 64 to 32) may not represent a reproductive switch to apomixis for Lomariopsidaceae (Chen et al. 2017). Further cytological investigations, e.g., through flow cytometry to infer both spore vs. leaf genome sizes (Kuo et al. 2017), are necessary to clarify whether changes in the two phenomena (i.e., spore number per sporangium and reproductive mode) are linked in these *Lomariopsis* species.

Key to *Lomariopsis longini*, *L. moorei*, *L. spectabilis*, and other morphologically close species in East Asia

- 1 Sterile lateral pinnae with lateral veins spreading (borne at nearly right angles to the pinna rachis), free, occasionally anastomosing..... ***L. chinensis***
- Sterile lateral pinnae with veins oblique, free..... **2**
- 2 Sterile lateral pinnae, abruptly narrowed to a caudate apex (2–3 cm long)
..... ***L. lineata***
- Sterile lateral pinnae with acuminate apex..... **3**

- 3 Sterile lateral pinnae lanceolate, widest in the lower third *L. longini*
 – Sterile lateral pinnae narrowly lanceolate, widest in the middle 4
 4 Sterile lateral pinnae with pinna stalks (0.3–0.7 cm long), base equilateral....
 *L. spectabilis*
 – Sterile lateral pinnae with, pinna subsessile, base cuneate and decurrent 5
 5 Swollen ring inconspicuous on abaxial articulation (especially upper pinnae),
 scales on the stipes broadly lanceolate (> 2 mm wide) *L. boninensis*
 – Swollen ring obvious on abaxial articulation side (especially upper pinnae),
 scales on the stipes narrowly lanceolate (< 2 mm wide) *L. moorei*

Acknowledgements

We thank Cheng-Wei Chen, Dirk Nikolaus Karger, Yi-Han Chang, Ran Wei, Leon Perrie, Joel Nitta, Jinmei Lu, and Wei-Hsiu Wu for collecting DNA materials for this study; Fay-Wei Li for generating the DNA sequences of *Lomariopsis sorbifolia*; Alexandria Quinlan for English edits; Robbin Moran, Tom A. Ranker, and Blanca León for the comments on the manuscript revision. The staff in herbaria KUN, P, TAIF, and TNS are gratefully acknowledged for the loan of specimens. The MNHN (Paris, France) gives access to the collections in the framework of the RECOLNAT national Research Infrastructure. This project was supported by MOST project (109-2621-B-007-001-MY3) in Taiwan, the Bioresource Conservation Research Center in College of Life Science from the Higher Education Sprout Project by MOE, Biodiversity Information Fund for Asia project (BIFA6_010), and Mr. Shann-Jye Moore Memorial Scholarship.

References

- Chen C-W, Sundue M, Kuo L-Y, Teng W-C, Huang Y-M (2017) Phylogenetic analyses place the monotypic *Dryopolystichum* within Lomariopsidaceae. *PhytoKeys* 78: 83–107. <https://doi.org/10.3897/phytokeys.78.12040>
- DeVol CE, Kuo CM (1975) Lomariopsidaceae. In: Li H-L, Liu T-S, Huang T-C, Koyama T, DeVol CE (Eds) *Flora of Taiwan*, 1st, vol. 1. Epoch Publishing Co., Ltd., Taipei, Taiwan, 347–358.
- Ebihara A (2017) *The Standard of Ferns and Lycophytes in Japan*. Vol. 2. Gakken Plus, Tokyo, Japan.
- Ebihara A, Yamaoka A, Mizukami N, Sakoda A, Nitta JH, Imaichi R (2013) A survey of the fern gametophyte flora of Japan: Frequent independent occurrences of noncordiform gametophytes. *American Journal of Botany* 100(4): 735–743. <https://doi.org/10.3732/ajb.1200555>
- Edgar RC (2004) MUSCLE: Multiple sequence alignment with high accuracy and high throughput. *Nucleic Acids Research* 32(5): 1792–1797. <https://doi.org/10.1093/nar/gkh340>

- Hasebe M, Omori T, Nakazawa M, Sano T, Kato M, Iwatsuki K (1994) *RbcL* gene sequences provide evidence for the evolutionary lineages of leptosporangiate ferns. *Proceedings of the National Academy of Sciences of the United States of America* 91(12): 5730–5734. <https://doi.org/10.1073/pnas.91.12.5730>
- Holtum RE (1932) On *Stenochlaena*, *Lomariopsis* and *Teratophyllum* in the Malayan region. *Gardens' Bulletin* 5: 245–313.
- Holtum RE (1939a) New Species of *Lomariopsis*. *Bulletin of Miscellaneous Information* 10: 613–628. <https://doi.org/10.2307/4118173>
- Holtum RE (1939b) The genus *Lomariopsis* in Madagascar and the Mascarene islands. *Notulae Systematicae* 8: 48–62.
- Holtum RE (1966) The genera *Lomariopsis*, *Teratophyllum*, and *Lomagrumma* in the islands of the Pacific and Australia. *Blumea* 14: 215–223. <https://repository.naturalis.nl/pub/525599>
- Holtum RE (1978) *Flora Malesiana*. Series II: Pteridophyta. Vol.1, pt. 1: *Lomariopsis* group. Erven P. Noordhoff, Groningen, the Netherlands, 255–330. <https://doi.org/https://doi.org/10.5962/bhl.title.41457>
- Iwatsuki K, Yamazaki T, Boufford DE, Ohba H [Eds] (1995) *Lomariopsidae*. *Flora of Japan*, Volume 1, Pteridophyta and Gymnospermae. KODANSHA LTD., Tokyo, Japan, 116 pp.
- Kalyaanamoorthy S, Minh BQ, Wong TKF, von Haeseler A, Jermiin LS (2017) ModelFinder: Fast model selection for accurate phylogenetic estimates. *Nature Methods* 14(6): 587–589. <https://doi.org/10.1038/nmeth.4285>
- Knapp R (2014) *Index to ferns and fern allies of Taiwan*. KBCC Press, Pingdong.
- Kuo L-Y (2015) Polyploidy and biogeography in genus *Deparia* and phylogeography in *Deparia lancea*. Ph. D. thesis, National Taiwan University.
- Kuo L-Y, Huang Y-J, Chang J, Chiou W-L, Huang Y-M (2017) Evaluating the spore genome sizes of ferns and lycophytes: A flow cytometry approach. *The New Phytologist* 213(4): 1974–1983. <https://doi.org/10.1111/nph.14291>
- Larsson A (2014) AliView: A fast and lightweight alignment viewer and editor for large data sets. *Bioinformatics (Oxford, England)* 30(22): 3276–3278. <https://doi.org/10.1093/bioinformatics/btu531>
- Lehtonen S, Cárdenas GG (2019) Dynamism in plastome structure observed across the phylogenetic tree of ferns. *Botanical Journal of the Linnean Society* 190(3): 229–241. <https://doi.org/10.1093/botlinnean/boz020>
- Li F-W, Tan BC, Buchbender V, Moran RC, Rouhan G, Wang C-N, Quandt D (2009) Identifying a mysterious aquatic fern gametophyte. *Plant Systematics and Evolution* 281(1–4): 77–86. <https://doi.org/10.1007/s00606-009-0188-2>
- Li F-W, Kuo L-Y, Huang Y-M, Chiou W-L, Wang C-N (2010) Tissue-direct PCR, a rapid and extraction-free method for barcoding of ferns. *Molecular Ecology Resources* 10(1): 92–95. <https://doi.org/10.1111/j.1755-0998.2009.02745.x>
- Moran RC (2000) Monograph of the neotropical species of *Lomariopsis* (Lomariopsidaceae). *Brittonia* 52(1): 55–111. <https://doi.org/10.2307/2666495>
- Nador S, Bajon R, Lejeune B (1994) The chloroplast gene *rps4* as a tool for the study of Poaceae phylogeny. *Plant Systematics and Evolution* 191(1–2): 27–38. <https://doi.org/10.1007/BF00985340>

- Nguyen LT, Schmidt HA, von Haeseler A, Minh BQ (2015) IQ-TREE: A fast and effective stochastic algorithm for estimating maximum-likelihood phylogenies. *Molecular Biology and Evolution* 32(1): 268–274. <https://doi.org/10.1093/molbev/msu300>
- Phan KL (2010) The updated checklist of the fern flora of Vietnam following the classification scheme of A. Smith et al. (2006). *Journal of Fairylake Botanical Garden* 9: 1–13.
- Pinson JB, Chambers SM, Nitta JH, Kuo L-Y, Sessa EB (2017) The separation of generations: Biology and biogeography of long-lived sporophyteless fern gametophytes. *International Journal of Plant Sciences* 178(1): 1–18. <https://doi.org/10.1086/688773>
- PPG I (2016) A community-derived classification for extant lycophytes and ferns. *Journal of Systematics and Evolution* 54(6): 563–603. <https://doi.org/10.1111/jse.12229>
- Pryer KM, Smith AR, Hunt JS, Dubuisson J-Y (2001) *RbcL* data reveal two monophyletic groups of filmy ferns (Filicopsida: Hymenophyllaceae). *American Journal of Botany* 88(6): 1118–1130. <https://doi.org/10.2307/2657095>
- Rakotondrainibe F, Jouy A (2017) Nouveautés dans le genre *Lomariopsis* Fée (Pteridophyta, Lomariopsidaceae) à Madagascar: Trois espèces nouvelles et une espèce africaine nouvellement signalée. *Adansonia* 39(2): 101–110. <https://doi.org/10.5252/a2017n2a1>
- Rambaut A, Drummond AJ (2013) Tracer v1.6. <http://tree.bio.ed.ac.uk/software/tracer/>
- Ronquist F, Teslenko M, van der Mark P, Ayres DL, Darling A, Höhna S, Larget B, Liu L, Suchard MA, Huelsenbeck JP (2012) MrBayes 3.2: Efficient Bayesian phylogenetic inference and model choice across a large model space. *Systematic Biology* 61(3): 539–542. <https://doi.org/10.1093/sysbio/sys029>
- Rouhan G, Hanks JG, McClelland D, Moran RC (2007) Preliminary phylogenetic analysis of the fern genus *Lomariopsis* (Lomariopsidaceae). *Brittonia* 59(2): 115–128. [https://doi.org/10.1663/0007-196X\(2007\)59\[115:PPAOTF\]2.0.CO;2](https://doi.org/10.1663/0007-196X(2007)59[115:PPAOTF]2.0.CO;2)
- Roux JP (2009) Synopsis of the Lycopodiophyta and Pteridophyta of Africa, Madagascar and neighbouring islands. South African National Biodiversity Institute, Pretoria. <https://www.cabdirect.org/cabdirect/abstract/20093165885> [accessed: October 21, 2021]
- Schwarz G (1978) Estimating the dimension of a model. *Annals of Statistics* 6(2): 461–464. <https://doi.org/10.1214/aos/1176344136>
- Souza-Chies TT, Bittar G, Nadot S, Carter L, Besin E, Lejeune B (1997) Phylogenetic analysis of Iridaceae with parsimony and distance methods using the plastid gene *rps4*. *Plant Systematics and Evolution* 204(1–2): 109–123. <https://doi.org/10.1007/BF00982535>
- Taberlet P, Gielly L, Pautou G, Bouvet J (1991) Universal primers for amplification of three non-coding regions of chloroplast DNA. *Plant Molecular Biology* 17(5): 1105–1109. <https://doi.org/10.1007/BF00037152>
- TPG (2019) Updating Taiwanese pteridophyte checklist: A new phylogenetic classification. *Taiwania* 64: 367–395. <https://doi.org/10.6165/tai.2019.64.367>
- Tsai JL, Shieh WC (1994) Lomariopsidaceae. In: Huang TC (Ed.) *Flora of Taiwan*, 2nd, vol. 1. Editorial Committee of the Flora of Taiwan, Taipei, Taiwan, 352–363.
- Watkins Jr JEJ, Moran RC (2019) Gametophytes of the fern genera *Dracoglossum* and *Lomariopsis* (Lomariopsidaceae) and their phylogenetic significance. *International Journal of Plant Sciences* 180(9): 1004–1015. <https://doi.org/10.1086/705587>

Wu Y-H, Ke Y-T, Chan Y-Y, Wang G-J, Kuo L-Y (in press) Integrating tissue-direct PCR into DNA identification: An upgraded molecular ecology way to survey fern field gametophytes. Applications in Plant Sciences.

Xing F, Wang F, Kato M (2013) *Lomariopsis*. In: Wu Z, Raven PH, Hong D (Eds) Flora of China, vol. 2–3. Missouri Botanical Garden Press, Beijing, China, St. Louis, USA, 725–726.

Yang Y-P, Liu H-Y (2002) Manual of Taiwan Vascular Plants, vol. 6. The Council of Agriculture, The Executive Yuen, Taipei.

Appendix I

Voucher information and GenBank accession numbers. –, sequences not available. *sequences obtained in this study.

Species name	Locality	Voucher (Herbarium)	GenBank accession number		
			<i>rbcL</i>	<i>rps4-trnS</i>	<i>trnL-L-F</i>
<i>Cyclopetlis crenata</i>	CHINA, Hainan	Wu935 (TAIF)	OL420736*	OL473642*	OL473665*
<i>Cyclopetlis novoguineensis</i>	SOLOMON ISLANDS	SITW068 (TAIF)	KY397974	KY397978	KY397970
<i>Cyclopetlis semicordata</i>	COSTA RICA	CJR et al. 08-195 (DUKE)	EF463234	KY397977	KY397969
<i>Dracoglossum plantagineum</i>	GUADELOUPE	Christenhusz 4065 (TUR)	KY397975	KC914565	KY397971
<i>Dryopolystichum phaeostigma</i>	SOLOMON ISLANDS	SITW10443 (BSIP, TAIF, TNM)	KY397972	KY397976	KY397968
<i>Lomariopsis</i> aff. <i>brackenridgei</i>	VANUATU, Espiritu Santo Is.	Matsumoto 01-857 (TNS)	-	-	OL473666*
<i>Lomariopsis boninensis</i>	JAPAN, Bonin Is.	TNS 763923 (TNS)	AB575226	OL473643*	OL473667*
<i>Lomariopsis boninensis</i>	JAPAN, Ishigaki Is.	Ebihara 2957 (TNS)	OL420737*	OL473644*	OL473668*
<i>Lomariopsis boninensis</i>	TAIWAN, Orchid Is.	CYH20091123_03 (TAIF)	OL420738*	OL473645*	OL473669*
<i>Lomariopsis boninensis</i>	TAIWAN, Orchid Is.	CYH20110918_25 (TAIF)	-	OL473646*	OL473670*
<i>Lomariopsis boninensis</i>	TAIWAN	Kuo 2423 (TAIF)	OL420739*	OL473647*	OL473671*
<i>Lomariopsis boninensis</i>	TAIWAN	Kuo 976 (TAIF)	OL420740*	OL473648*	OL473672*
<i>Lomariopsis brackenridgei</i>	Fiji	FJ_2011_207 (WELT)	OL420741*	OL473649*	OL473673*
<i>Lomariopsis brackenridgei</i>	FRENCH POLYNESIA, Moorea	JNG3191 (UC)	-	-	OL473674*
<i>Lomariopsis</i> cf. <i>lineata</i>	Unknown Origin	F042 (SING)	OL420742*	AM947063	AM946393
<i>Lomariopsis japurensis</i>	Unknown Origin	Lehtonen 989 (TUR)	MK705752	MK705752	MK705752
<i>Lomariopsis kingii</i>	INDONESIA, Bacan	DK1398 (UC)	OL420743*	OL473650*	OL473675*
<i>Lomariopsis kingii</i>	NEW GUINEA	DK2800 (UC)	OL420744*	OL473651*	OL473676*
<i>Lomariopsis leptocarpa</i>	MICRONESIA	Masuda 6919 (TNS)	OL420745*	OL473652*	OL473677*
<i>Lomariopsis lineata</i>	INDONESIA, Sulawesi	DK925 (UC)	OL420746*	OL473653*	OL473678*
<i>Lomariopsis lineata</i>	Philippines	Kuo 2052 (TAIF)	OL420747*	OL473654*	OL473679*
<i>Lomariopsis lineata</i>	PHILIPPINES	Wade 3946 (TAIF)	-	-	OL473680*
<i>Lomariopsis novaealedoniae</i>	NEW CALEDONIA	Nakamura 2157 (TNS)	-	OL473655*	OL473681*
<i>Lomariopsis sorbifolia</i>	GUADELOUPE	Christenhusz 4070 (TUR)	EF463236	OL473656*	OL473682*
<i>Lomariopsis longini</i>	CHINA, Yunnan	Dong 3597 (IBSC)	OL420748*	OL473657*	OL473683*
<i>Lomariopsis longini</i>	CHINA, Yunnan	WQ243 (KUN)	OL420749*	OL473658*	OL473684*
<i>Lomariopsis longini</i>	VIETNAM	Wade983 (TAIF)	OL420750*	OL473659*	OL473685*
<i>Lomariopsis longini</i>	VIETNAM	Zhang et al.7185	KU605187	KU605086	KU605107
<i>Lomariopsis longini</i>	VIETNAM	WP897 (KUN)	-	-	OL473686*
<i>Lomariopsis longini</i>	VIETNAM	WP1124 (KUN)	-	-	OL473687*
<i>Lomariopsis moorei</i>	TAIWAN	YX052 (TAIF)	OL420751*	OL473660*	OL473688*
<i>Lomariopsis moorei</i>	CHINA, Hainan	HN197 (PE)	OL420752*	OL473661*	OL473689*
<i>Lomariopsis moorei</i>	TAIWAN	Ha 10**	-	-	OL473690*
<i>Lomariopsis moorei</i>	CHINA, Hainan	Wu 1062 (TAIF)	OL420753*	OL473662*	OL473691*
<i>Lomariopsis spectabilis</i>	INDONESIA, Java	Wade 1100 (TAIF)	OL420754*	OL473663*	OL473692*

Species name	Locality	Voucher (Herbarium)	GenBank accession number		
			<i>rbcl</i>	<i>rps4-trnS</i>	<i>trnL-L-F</i>
<i>Lomariopsis spectabilis</i>	INDONESIA, Java	Wade 1838 (TAIF)	OL420755*	OL473664*	OL473693*
<i>Lomariopsis cordata</i>	MADAGASCAR	Rakotondrainibe 1771 (P)	-	-	DQ396558
<i>Lomariopsis crassifolia</i>	MADAGASCAR	Janssen et al. 2527 (P)	-	-	DQ396602
<i>Lomariopsis crassifolia</i>	MADAGASCAR	Humboldt 442 (P)	-	-	DQ396559
<i>Lomariopsis guineensis</i>	SIERRA LEONE	Fay & Fay s.n., in 1985 (NY)	-	-	DQ396560
<i>Lomariopsis hederacea</i>	CAMEROON	Raynal 9954 (P)	-	-	DQ396561
<i>Lomariopsis jamaicensis</i>	JAMAICA	Maxon & Killip 1463 (NY)	-	-	DQ396562
<i>Lomariopsis japurensis</i>	ECUADOR	Moran 6021 (NY, QCA, QCNE)	-	-	DQ396566
<i>Lomariopsis japurensis</i>	ECUADOR	Moran 6061 (NY, QCA, QCNE)	-	-	DQ396565
<i>Lomariopsis japurensis</i>	COSTA RICA	Moran 6381 (CR, INB, NY)	-	-	DQ396567
<i>Lomariopsis japurensis</i>	BOLIVIA	Sundue 708 (LPB, NY, USZ)	-	-	DQ396563
<i>Lomariopsis japurensis</i>	PERU	Bell 88180 (NY)	-	-	DQ396564
<i>Lomariopsis japurensis</i>	BOLIVIA	Jimenez 2016 (LPB, NY)	-	-	DQ396568
<i>Lomariopsis kunzeana</i>	HAITI	Zanoni 28649 (EHH, NY)	-	-	DQ396570
<i>Lomariopsis kunzeana</i>	UNITED STATES	Peck s.n. (NY)	-	-	DQ396569
<i>Lomariopsis latipinna</i>	ECUADOR	Moran 6027 (NY, QCA, QCNE, TUR)	-	-	DQ396571
<i>Lomariopsis lineata</i>	THAILAND	Larsen 45851 (AAU, NY)	-	-	DQ396572
<i>Lomariopsis longicaudata</i>	MADAGASCAR	Janssen 2493 (P)	-	-	DQ396574
<i>Lomariopsis longicaudata</i>	MADAGASCAR	Rakotondrainibe 6191 (P)	-	-	DQ396573
<i>Lomariopsis madagascariica</i>	MADAGASCAR	Kessler 12786 (NY)	-	-	DQ396575
<i>Lomariopsis madagascariica</i>	MADAGASCAR	Decary 18186 (P)	-	-	DQ396576
<i>Lomariopsis mannii</i>	DEMOCRATIC REPUBLIC OF CONGO	Kassner s.n., in 1914 (P)	-	-	DQ396577
<i>Lomariopsis marginata</i>	BRAZIL	Pires et al. 50316 (NY)	-	-	DQ396579
<i>Lomariopsis marginata</i>	BRAZIL	Amorim 1920 (CEPEC, NY)	-	-	AY540045
<i>Lomariopsis marginata</i>	BRAZIL	Labiak 104 (NY, UPGB)	-	-	DQ396578
<i>Lomariopsis maxonii</i>	COSTA RICA	Moran 4172 (CR, NY, UC)	-	-	DQ396580
<i>Lomariopsis maxonii</i>	COSTA RICA	Smith 1660 (CR, NY, UC)	-	-	DQ396581
<i>Lomariopsis nigropaleata</i>	ECUADOR	Moran 6053 (NY)	-	-	DQ396584
<i>Lomariopsis nigropaleata</i>	BOLIVIA	Jimenez 1949 (LPB, NY)	-	-	DQ396583
<i>Lomariopsis palustris</i>	SIERRA LEONE	Fay 1124 (NY)	-	-	DQ396585
<i>Lomariopsis pervillei</i>	MADAGASCAR	Rakotondrainibe et al. 6626 (P)	-	-	DQ396586
<i>Lomariopsis pervillei</i>	MADAGASCAR	Rakotondrainibe et al. 6623 (P)	-	-	DQ396587
<i>Lomariopsis warneckeii</i>	COMOROS	Rakotondrainibe et al. 6707 (P)	-	-	DQ396588
<i>Lomariopsis pollicina</i>	MADAGASCAR	Kessler 12785 (GOET, NY)	-	-	DQ396589
<i>Lomariopsis prieuriana</i>	VENEZUELA	Cortez 475 (NY, VEN)	-	-	DQ396591
<i>Lomariopsis prieuriana</i>	PANAMA	Moran 5080 (MO, NY, PMA)	-	-	DQ396590
<i>Lomariopsis recurvata</i>	MEXICO	Rivera 1343 (NY)	-	-	DQ396592
<i>Lomariopsis recurvata</i>	MEXICO	Hernandez 2286 (NY)	-	-	DQ396593
<i>Lomariopsis rossii</i>	LIBERIA	Fay 1237 (NY)	-	-	DQ396594
<i>Lomariopsis salicifolia</i>	ECUADOR	Moran 6022 (AAU, NY, QCA, QCNE, TUR)	-	-	DQ396597
<i>Lomariopsis salicifolia</i>	ECUADOR	Moran 6129 (NY, QCA, QCNE)	-	-	DQ396595
<i>Lomariopsis salicifolia</i>	ECUADOR	Moran 6956 (NY, QCA, QCNE)	-	-	DQ396596
<i>Lomariopsis warneckeii</i>	MADAGASCAR	Janssen et al. 2444 (P)	-	-	DQ396601
<i>Lomariopsis warneckeii</i>	MADAGASCAR	Rouhan et al. 318 (P)	-	-	DQ396603
<i>Lomariopsis vestita</i>	COSTA RICA	Moran 6382 (CR, INB, NY, USJ)	-	-	DQ396598
<i>Lomariopsis vestita</i>	COSTA RICA	Folsom 9011 (NY)	-	-	DQ396599
<i>Lomariopsis wrightii</i>	CUBA	Underwood 948 (NY)	-	-	DQ396600