



HAL
open science

Somatostatin 1.1 contributes to the innate exploration of zebrafish larva

Feng B Quan, Laura Desban, Olivier Mirat, Maxime Kermarquer, Julian Roussel, Fanny Koëth, Hugo Marnas, Lydia Djenoune, François-Xavier Lejeune, Hervé Tostivint, et al.

► **To cite this version:**

Feng B Quan, Laura Desban, Olivier Mirat, Maxime Kermarquer, Julian Roussel, et al.. Somatostatin 1.1 contributes to the innate exploration of zebrafish larva. *Scientific Reports*, 2020, 10, pp.15235. 10.1038/s41598-020-72039-x . mnhn-02943951

HAL Id: mnhn-02943951

<https://mnhn.hal.science/mnhn-02943951>

Submitted on 21 Sep 2020

HAL is a multi-disciplinary open access archive for the deposit and dissemination of scientific research documents, whether they are published or not. The documents may come from teaching and research institutions in France or abroad, or from public or private research centers.

L'archive ouverte pluridisciplinaire **HAL**, est destinée au dépôt et à la diffusion de documents scientifiques de niveau recherche, publiés ou non, émanant des établissements d'enseignement et de recherche français ou étrangers, des laboratoires publics ou privés.



OPEN

Somatostatin 1.1 contributes to the innate exploration of zebrafish larva

Feng B. Quan^{1,2}, Laura Desban^{1,3}, Olivier Mirat¹, Maxime Kermarquer¹, Julian Roussel¹, Fanny Koëth¹, Hugo Marnas¹, Lydia Djenoune^{1,4,5}, François-Xavier Lejeune¹, Hervé Tostivint² & Claire Wyart¹✉

Pharmacological experiments indicate that neuropeptides can effectively tune neuronal activity and modulate locomotor output patterns. However, their functions in shaping innate locomotion often remain elusive. For example, somatostatin has been previously shown to induce locomotion when injected in the brain ventricles but to inhibit fictive locomotion when bath-applied in the spinal cord in vitro. Here, we investigated the role of somatostatin in innate locomotion through a genetic approach by knocking out *somatostatin 1.1* (*sst1.1*) in zebrafish. We automated and carefully analyzed the kinematics of locomotion over a hundred of thousand bouts from hundreds of mutant and control sibling larvae. We found that the deletion of *sst1.1* did not impact acousto-vestibular escape responses but led to abnormal exploration. *sst1.1* mutant larvae swam over larger distance, at higher speed and performed larger tail bends, indicating that Somatostatin 1.1 inhibits spontaneous locomotion. Altogether our study demonstrates that Somatostatin 1.1 innately contributes to slowing down spontaneous locomotion.

In vertebrates, locomotion relies on neuronal networks called central pattern generators (CPGs) that coordinate the organized patterns of activity in motor neurons^{1–3}. Although most fast motor actions computed by neural circuits are mediated by synaptic neurotransmitters, the modulation of locomotor patterns relies on neuromodulators such as serotonin, dopamine and neuropeptides, which allow an important versatility in network functions without requiring structural changes in circuit organization^{4–6}. Neuropeptides can play an important role in modulating locomotor patterns by tuning activity of spinal interneurons and motor neurons. Neuropeptides are widely expressed in the central nervous system (CNS) with a high cell type specificity. However, their roles in modulating intrinsic locomotor patterns are still largely uncharacterized.

Somatostatin is a cyclic tetradecapeptide that was originally isolated from ovine hypothalamic extracts as a result of its ability to inhibit the release of growth hormone by pituitary cells⁷. Subsequent studies in mammals have revealed that somatostatin is produced in several tissues and play important roles in coordinating growth, development and metabolism^{8–10}. Somatostatin is widely expressed in the CNS where it is mainly found in the hypothalamus^{11–13}, amygdala^{14,15}, preoptic area¹⁶, hippocampus^{17–19}, striatum²⁰, deeper layers of the cerebral cortex^{21–23}, brainstem^{24,25} and the spinal cord^{26–29}. Somatostatin has been shown to act as a neuromodulator involved in sleep³⁰, learning^{31,32}, food intake³³, reproduction³⁴, neuropathology³⁵ and locomotor activity^{36,37}. Somatostatin exerts its actions through specific receptors, which belong to the G protein-coupled receptor (GPCR) superfamily. In mammals, there are five somatostatin receptor subtypes (SSTR1–5)^{38,39}.

The contribution of somatostatin to motor functions is suggested by several studies in mammals. Early reports have shown that intracerebroventricular administration of the peptide increased locomotor activity^{36,37}, while somatostatin depletion induced by cysteamine produced opposite effects³⁶, suggesting an excitatory action in motor control. However, in lamprey, bath application of somatostatin resulted in a reduction of locomotor network rhythm in a dose-dependent manner in the spinal cord during fictive locomotion⁴⁰, indicating conversely

¹Sorbonne Université, Institut du Cerveau (ICM), Campus Hospitalier Universitaire Pitié-Salpêtrière, 47 bld de l'Hôpital, 75013 Paris, France. ²Muséum National d'Histoire Naturelle (MNHN), CNRS UMR 7221, Paris, France. ³Present address: Institute of Neuroscience, University of Oregon, Eugene, OR, USA. ⁴Present address: Cardiovascular Research Center, Massachusetts General Hospital, Charlestown, MA 02129, USA. ⁵Present address: Harvard Medical School, Boston, MA 02115, USA. ✉email: claire.wyart@icm-institute.org

a depressing effect on locomotion. The exact contribution of somatostatin on innate locomotion remains thereby unclear.

Recent studies have revealed in the spinal cord an interoceptive pathway relying on cerebrospinal fluid-contacting neurons (CSF-cNs) that can detect spinal curvature and in turn, modulate locomotion via GABAergic projections on CPG neurons^{41–44}. In mouse and zebrafish, two populations of spinal CSF-cNs, namely dorsal and ventral CSF-cNs, have been characterized on the basis of both their origin, morphology⁴² and location^{42,45,46}. Interestingly, in zebrafish, dorsal CSF-cNs, that are selectively recruited upon lateral tail bending during swimming⁴¹, express *somatostatin 1.1*, the fish counterpart of the somatostatin gene in mammals⁴⁷, and project onto V0-v interneurons known to control slow locomotion^{42,43}.

The zebrafish model organism offers the opportunity to combine genetic manipulations with high-throughput behavioral analysis on hundreds of thousands of stereotyped locomotor events from hundreds of animals at the larval stage^{48,49}. Five days post fertilization (dpf), zebrafish larvae exhibit a ‘beat-and-glide’ swimming with discrete bouts of swim separated by long resting periods^{48–50}. Their exploration consists of slow bouts propelling them either forward or with an angle, defined as slow swims and routine turns respectively. In response to a threatening stimulus, larval zebrafish perform escape responses characterized by a C-start and an initial high tail beat frequency, with powerful tail bends, followed by gradual decrease in both amplitude and frequency^{51–53}.

Here we investigated the role of Somatostatin 1.1 on innate locomotion in zebrafish larvae. We generated a *sst1.1* mutant using CRISPR/Cas9-mediated genome editing. To achieve the analysis depth necessary for the detection of modifications in both spontaneous locomotion and escape responses, we developed high-throughput behavior assays enabling us to record and analyze up to ~120,000 locomotor events at either high frequency following acousto-vestibular (AV) stimulus, or during long-scale time. We compared the kinematics of *sst1.1* mutant larvae to their wild-type (WT) siblings in three basic maneuvers: AV escape responses in fast locomotor regime, or forward swim and routine turn bouts occurring during slow swimming exploration. Our results indicate that Somatostatin 1.1 inhibits locomotion in the slow regime, in particular during forward swims by reducing amplitude of tail bends, bout duration and distance travelled. We discuss the possible circuits involved in this modulation.

Results

Generation of the *sst1.1* mutant. To investigate whether Somatostatin 1.1 release affects the kinematics of locomotion, we generated a *sst1.1* mutant using CRISPR/Cas9-mediated genome editing (Fig. 1a, “Methods”). We designed guide RNAs targeting specifically the beginning of the coding sequence that led to a 23 base pair deletion removing the start codon and leading to an early frameshift. We isolated this allele that is referred to as *sst1.1^{icm40}*.

High-throughput quantification of locomotor defects in mutant zebrafish larvae. Inter-clutches differences often account for most of the variability in behavior. To detect locomotor defects associated with loss of *somatostatin 1.1*, we therefore compared the locomotion kinematics in *sst1.1^{icm40/icm40}* mutants to the ones in WT siblings obtained from incrossing adult zebrafish heterozygous for the mutation. We systematically analyzed kinematic parameters within the same clutches prior to genotyping individuals in order to blind experiments (see “Methods”). Inter-clutches variations are very large in behavioral datasets and the detection of minor locomotor defects due to the loss of function of a single peptide such as Somatostatin 1.1 required to compare the behavior of hundreds of larvae from the same clutches.

First, we developed a high throughput behavior assay to simultaneously record with two cameras in parallel up to 88 fish isolated in individual wells and performing thousands of swimming events acquired at 100–200 Hz and over tens of minutes (see “Methods”). Second, we improved the source code of our tracking software ZebraZoom^{41,49,53} to reduce the tracking error rate (under 0.5%) by adjusting the configuration parameters (Fig. 1b, “Methods”). Finally, we adapted the source code of ZebraZoom to be executed on a High-Performance Computing (HPC) system equipped with numerous processors. We automated the process of the big dataset management and storage to be accessible by the HPC system, thereby allowing to promptly process large datasets (e.g. ~120,000 swimming bouts) at high speed (typically processing 3,250 frames per min per well and running 120 wells in parallel) (Fig. 1c, “Methods”). By reorganizing the pipeline of the ZebraZoom algorithm, we managed to simultaneously track hundreds of videos. Altogether, we implemented a powerful high throughput pipeline for acquiring and tracking behavior in order to efficiently quantify locomotor defects of mutant zebrafish larvae. Compared to online tracking, our pipeline authorizes the later inspection of videos in order to verify tracking and detect additional defects in 3D posture that may have been missed from the sole analysis of the head direction and tail angle^{44,54}.

***sst1.1* mutant larvae perform proper escape responses.** We next investigated the role of Somatostatin 1.1 in the fast locomotor regime. We investigated escape responses induced by AV stimuli (5 ms-long sine wave at 500 Hz, see “Methods” and Fig. 2a). All zebrafish larvae were subjected to 10 trials interspaced by 3 min (Fig. 2a) and we analyzed escape kinematic parameters averaged across trials. Escape response behavior is highly stereotyped starting with a fast short latency C-start followed by a large counter bend in the opposite direction, followed by a series of oscillations at high tail beat frequency⁵⁰ (Fig. 2b). We measured eight kinematics parameters for each response: distance travelled (Fig. 2c1), duration (Fig. 2c2), speed (Fig. 2c3), number of oscillations (Fig. 2c4), average tail beat frequency (Fig. 2c5), latency (Fig. 2c6), C-bend amplitude (Fig. 2c7) and counter bend amplitude (Fig. 2c8). We did not observe any difference between *sst1.1^{icm40/icm40}* mutant larvae compared to WT control siblings (Fig. 2c1–c8). Overall, we conclude that Somatostatin 1.1 does not contribute to the kinematics of the fast escape response.

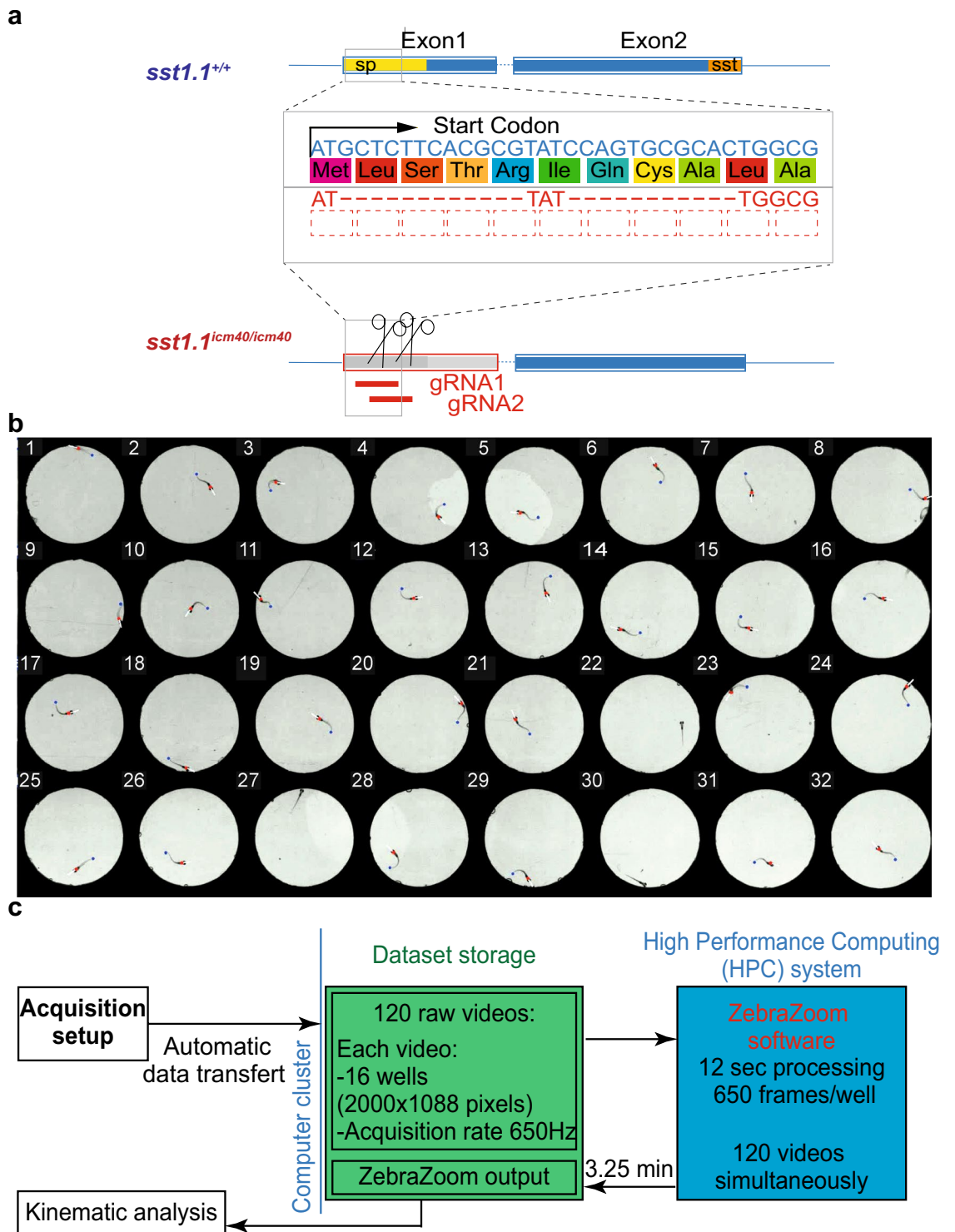


Figure 1. Generation of the *sst1.1* mutant and a high-throughput assay for kinematic analysis. **(a)** Generation of the mutated allele *icm40* of the *somatostatin 1.1* gene (*sst1.1^{icm40}*) using CRISPR/Cas9-mediated genome editing. Top, genomic organization of the *sst1.1* wild type gene with the coding sequence (yellow) of the signal peptide (sp, 24 amino acids) and (orange) mature somatostatin peptide (sst, 26 amino acids). Bottom, the *icm40* mutated allele results from 23-bp deletion that impairs the start codon, and induces a frameshift in the *sst1.1* coding sequence. **(b)** We developed a high throughput behavior assay to simultaneously record and at high frequency (350 Hz) 32–88 freely-swimming zebrafish larvae in individual circular swim arenas of 15-mm diameter. Behavioral recordings were tracked using the ZebraZoom algorithm⁴⁹, which detects the head direction (white line), the body position (red dots) and the tail end position (blue dot). See Supplementary Video S1. **(c)** Illustration of the pipeline for image processing in order to achieve rapid high-throughput analysis of kinematics between mutants and their control siblings. See “Methods”.

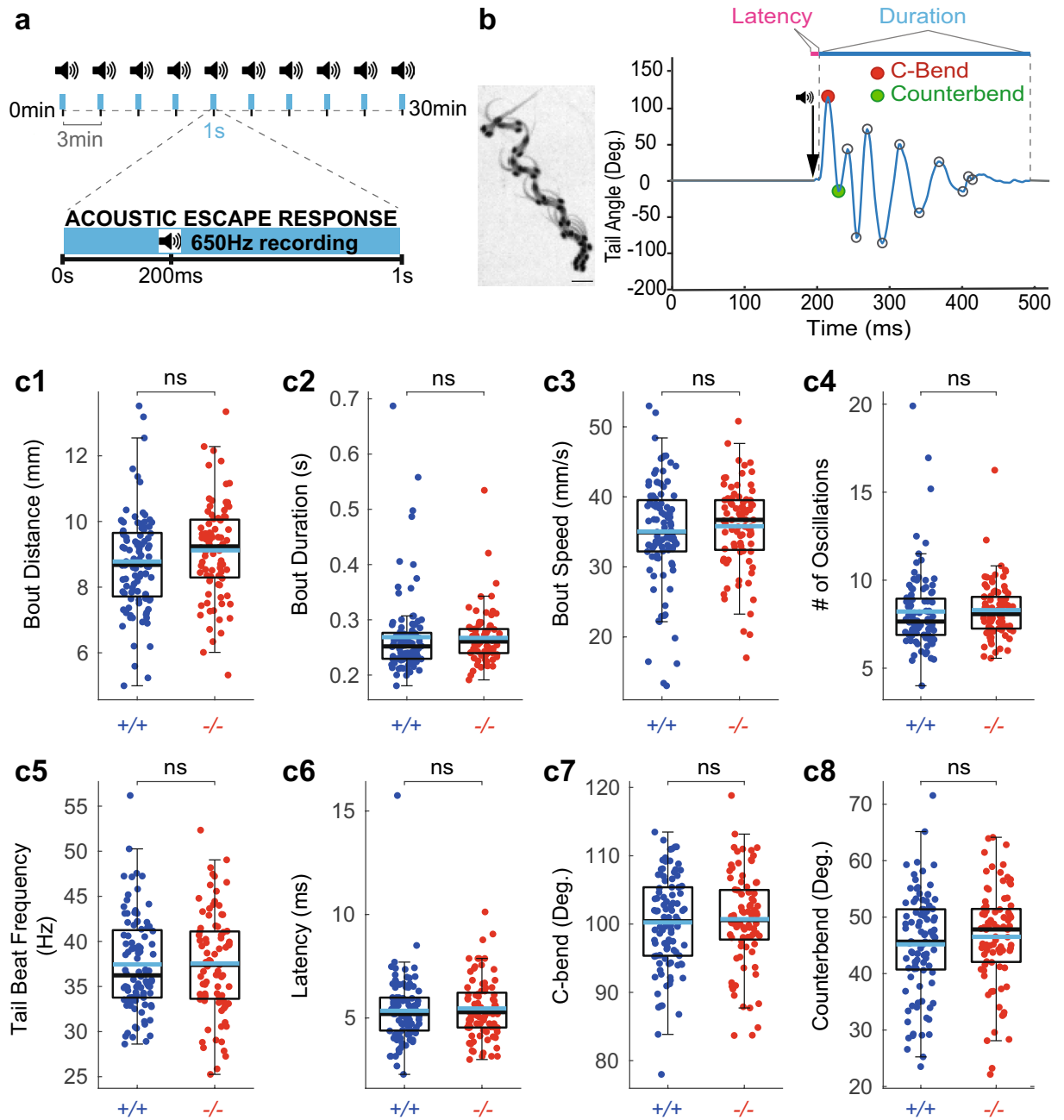


Figure 2. Somatostatin 1.1 does not contribute to the kinematic of acousto-vestibular escape responses. (a)

Experimental paradigm used to record the escape response of 5 dpf zebrafish larvae to AV stimuli delivered for 5 ms at 500 Hz. Larvae were subjected to 10 trials interspaced by 3 min. Behavioral responses were recorded for 1 s at 650 Hz. (b) Left, Superimposed images illustrating the sequence of movements during a typical AV escape response (scale bar: 1 mm). Right, tail angle trace over time of escape response showing the large C-bend (red circle) followed by the counterbend (green circle) characteristic of the escape response. Latency is defined as the delay between the time of the acoustic stimulus and the onset of the behavioral response; Tail beat frequency (TBF) calculated as the number of oscillations divided by the bout duration. (c1–c8) No difference in AV escape responses between *sst1.1^{cm40/cm40}* mutants (*-/-*, 84 larvae from 4 clutches and 761 escapes) and WT siblings (*+/+*, 96 larvae from 4 clutches and 861 escapes): distance (c1, mean \pm SEM 9.12 ± 0.16 mm versus 8.73 ± 0.15 mm in WTs; Wald $\chi^2(1) = 1.047$, $p = 1$), bout duration (c2, mean \pm SEM 0.27 ± 0.01 s versus 0.27 ± 0.01 s in WTs; Wald $\chi^2(1) = 0.996$, $p = 1$), speed (c3, mean \pm SEM 35.73 ± 0.67 mm/s versus 34.97 ± 0.78 mm/s in WTs; Wald $\chi^2(1) = 0.457$, $p = 1$), number of oscillations (c4, mean \pm SEM 8.27 ± 0.17 versus 8.22 ± 0.23 in WTs; Wald $\chi^2(1) = 0.534$, $p = 1$), tail beat frequency (c5, mean \pm SEM 37.56 ± 0.62 Hz versus 37.45 ± 0.54 Hz in WTs; Wald $\chi^2(1) = 0.001$, $p = 1$), latency (c6, mean \pm SEM 5.45 ± 0.16 ms versus 5.34 ± 0.17 ms in WTs; Wald $\chi^2(1) = 7.297$, $p = 0.050$), C-bend versus counterbend (c7, mean \pm SEM 100.60 ± 0.76 degrees versus 100.20 ± 0.71 degrees in WTs; Wald $\chi^2(1) = 0.023$, $p = 1$) and counterbend amplitude (c8, mean \pm SEM 46.51 ± 0.95 degrees versus 45.15 ± 0.93 degrees in WTs; Wald $\chi^2(1) = 4.167$, $p = 0.298$). Each dot represents the value for one larva averaged over ten trials. Median values are indicated in black, and means in blue; Statistical tests used: Wald chi-square test followed by M_{eff} correction for multiple comparisons. $M_{\text{eff}} = 7.230$.

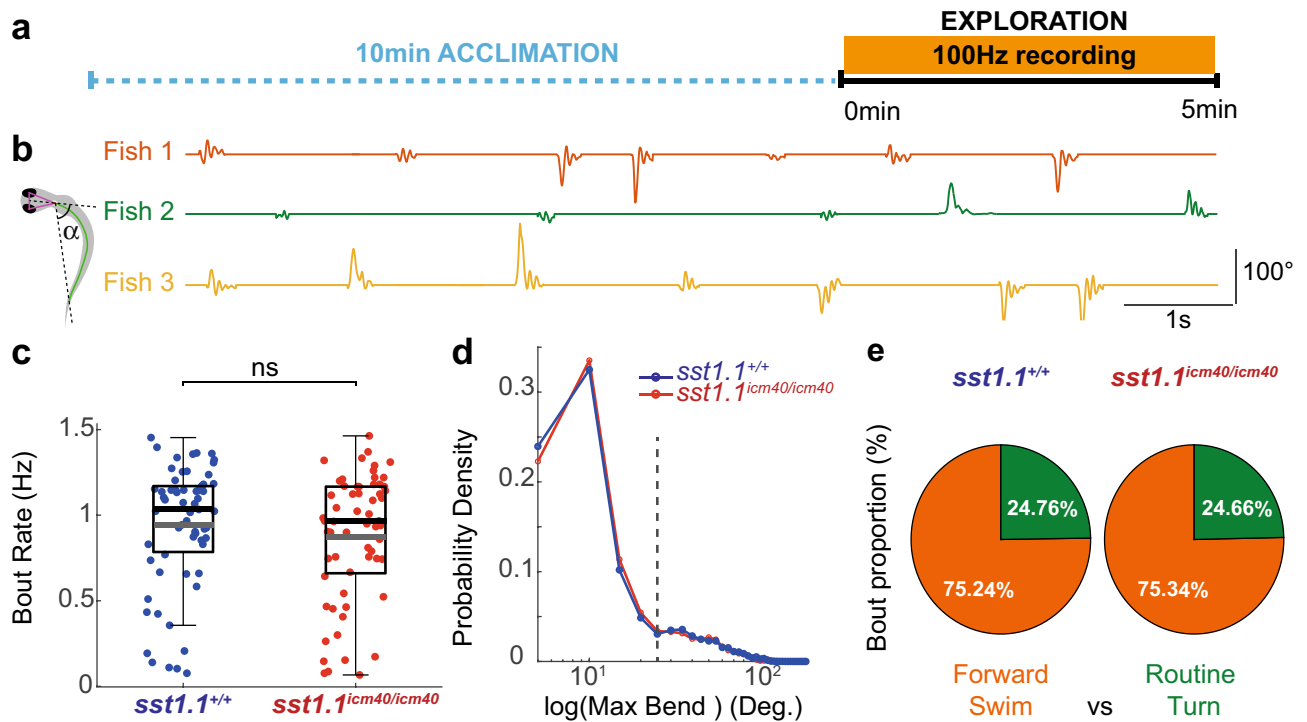


Figure 3. Somatostatin 1.1 does not contribute to the bout rate nor to the ratio of forward bouts and turns during exploration. **(a)** Experimental paradigm used to record spontaneous slow swim in 5-dpf zebrafish larvae over 5 min at 100 Hz after 10 min of acclimation. **(b)** The kinematic analysis relies on the measure of the tail angle α over time as shown for 3 different larvae. **(c)** Bout rate is similar for *sst1.1^{icm40/icm40}* mutant larvae and control WT siblings (Grey line: mean \pm SEM. 0.91 ± 0.04 Hz, $N = 58$ larvae; 0.95 ± 0.04 Hz, $N = 62$ larvae; Wald $\chi^2(1) = 0.084$, $p = 0.771$). Black lines: medians. **(d)** Probability density function of the absolute maximal bend amplitude for all bouts of *sst1.1^{icm40/icm40}* mutant larvae (red) versus WT siblings (blue). Forward swims and routine turns were sorted with a 25-degree threshold (dashed line). **(e)** The ratio of forward swims (orange) and routine turns (green) is similar for *sst1.1^{icm40/icm40}* mutant larvae and WT siblings.

Somatostatin 1.1 does not contribute to the rate of exploration. Five-dpf zebrafish larvae explore their environment by generating a series of locomotor bouts typically comprising forward swim bouts and routine turns, all occurring in the slow regime at 1–2 Hz (Fig. 3). We first investigated the consequences of *sst1.1* loss of function on the exploration rate of zebrafish larvae. We recorded the spontaneous slow swimming of 5-dpf larvae from the incrosses of *sst1.1^{icm40/+}* mutants (F3) at 100 Hz over 5 min (Fig. 3a,b). We compared the exploratory swim kinematics of *sst1.1^{icm40/icm40}* mutant larvae ($n = 58$ larvae, 16,043 bouts) to control siblings ($n = 62$ larvae, 17,834 bouts). We used the tail angle over time to identify individual bouts and quantify kinematic parameters (Fig. 3b). First, we tested whether *sst1.1* loss affects bout rate during exploration. We found no difference in swim bout rate for *sst1.1^{icm40/icm40}* mutant larvae compared to their WT siblings (mean \pm SEM: 0.91 ± 0.04 Hz, $N = 58$ mutant larvae; mean \pm standard error of the mean (SEM): 0.95 ± 0.04 Hz, $N = 62$ control WT siblings, see Fig. 3c).

We evaluated whether *sst1.1* loss affects the proportion of bout types occurring spontaneously, i.e. forward swims and routine turns. As a first approximation, we chose to distinguish forward swim and routine turn by using a 25-degree cut-off on the maximal bend amplitude (Fig. 3d). Using this categorization (Fig. 3e), we found that in our arenas, swim bouts occurred as forward swims in three quarter of cases, and routine turn for the remaining quarter in *sst1.1^{icm40/icm40}* mutants as in control WT siblings (mutant: 75.34% of forward swims versus 24.66% of routine turns; WT: 75.24% versus 24.76%). Altogether, these results indicate that *somatostatin 1.1* loss does not affect the bout rate nor the distribution of bout types during exploration.

Somatostatin 1.1 innately inhibits locomotion during forward swims. To probe whether Somatostatin 1.1 specifically contributes to the different exploratory bout types, we analyzed detailed kinematic parameters of forward swims and routine turns in *sst1.1^{icm40/icm40}* mutant and WT siblings. Slow forward swims consist of small and symmetrical side-to-side bends of the tail to propel the fish forward (maximal amplitude typically below 25° , see Fig. 4a). Conversely, routine turns correspond to low speed turns, characterized by a large initial bend (amplitude typically above 25° , see Fig. 4b), followed by swimming in the new direction imposed by the first bend⁵⁰. We analyzed the kinematics based on the head position and tail angle⁴⁹. For each bout, we extracted bout distance, duration, number of oscillations, median bend amplitude, speed and tail beat frequency (Fig. 4c,d). The forward swims of *sst1.1^{icm40/icm40}* mutants exhibited an increase in bout distance (16.5%, Fig. 4c1) and, to a smaller extent, in bout duration (6.5%, Fig. 4c2), resulting in an overall 10.5% increase

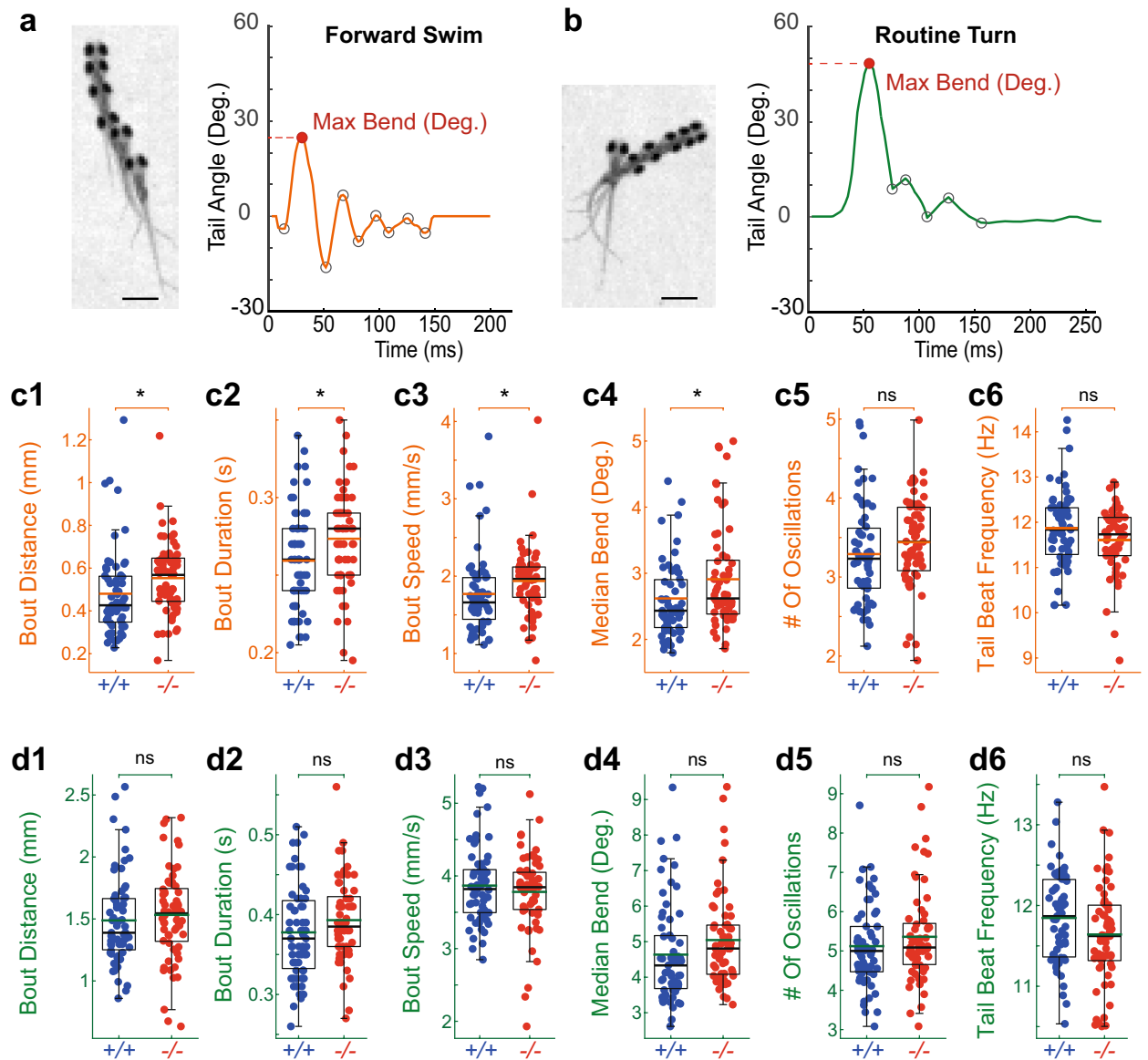


Figure 4. *Somatostatin 1.1* null mutant larvae explore more by deploying longer and faster forward swims. (a) Left, Superimposed images illustrating the sequence of positions observed during a forward swim (scale bar, 1 mm); right, typical forward swim showing the tail angle trace over time with a maximal bend amplitude below 25 degrees. Subsequent peaks (grey circles) correspond to each bend amplitude. (b) Left, superimposed images illustrating the sequence of movements during routine turn (scale bar, 1 mm); right, tail angle trace over time of typical routine turn showing the maximal bend amplitude above 25 degrees. (c1–c6) Forward swims in *sst1.1^{icm40/icm40}* mutant (red, ‘-/-’) had larger distance traveled (c1, mean \pm SEM 0.56 ± 0.02 mm versus 0.48 ± 0.03 mm in WT; Wald $\chi^2(1) = 7.340$, $p = 0.027$), bout duration (c2, mean \pm SEM 0.27 ± 0.004 s versus 0.26 ± 0.004 s in WT; Wald $\chi^2(1) = 7.171$, $p = 0.030$), speed (c3, mean \pm SEM 1.96 ± 0.06 mm/s versus 1.78 ± 0.07 mm/s in WT; Wald $\chi^2(1) = 6.955$, $p = 0.033$) and median bend amplitude (c4, mean \pm SEM 2.88 ± 0.10 degrees versus 2.57 ± 0.07 degrees in WT; Wald $\chi^2(1) = 6.529$, $p = 0.042$) but no difference in number of oscillations (c5, mean \pm SEM 3.47 ± 0.07 versus 3.29 ± 0.08 in WT; Wald $\chi^2(1) = 2.789$, $p = 0.380$), tail beat frequency (c6, mean \pm SEM 11.66 ± 0.09 Hz versus 11.84 ± 0.10 Hz in WT; Wald $\chi^2(1) = 1.785$, $p = 0.726$). Black lines, median; Orange lines, mean. $M_{\text{eff}} = 4.003$. (d1–d6) Routine turns were undistinguishable in *sst1.1^{icm40/icm40}* mutant larvae compared to WT siblings: Bout distance (d1, mean \pm SEM 1.57 ± 0.04 mm versus 1.49 ± 0.05 mm in WT; Wald $\chi^2(1) = 1.910$, $p = 0.755$); bout duration (d2, mean \pm SEM 0.38 ± 0.01 s versus 0.37 ± 0.01 s in WT; Wald $\chi^2(1) = 4.025$, $p = 0.203$); speed (d3, mean \pm SEM 3.86 ± 0.05 mm/s versus 3.86 ± 0.07 mm/s in WT; Wald $\chi^2(1) = 0.021$, $p = 1$); median bend amplitude (d4, 4.87 ± 0.14 degrees versus 4.60 ± 0.17 degrees in WT; Wald $\chi^2(1) = 1.853$, $p = 0.784$); number of oscillations (d5, 5.42 ± 0.16 versus 5.12 ± 0.13 in WT; Wald $\chi^2(1) = 2.464$, $p = 0.526$); tail beat frequency (d6, 11.68 ± 0.08 Hz versus 11.84 ± 0.07 Hz in WT; Wald $\chi^2(1) = 2.054$, $p = 0.686$). Black lines, median; Green lines, mean. Each point represents the median for one fish over the 5 min-long recording. $M_{\text{eff}} = 4.518$. Comparison between 62 WT larvae from 4 clutches (17 834 bouts) and 58 *sst1.1^{icm40/icm40}* mutant larvae from 4 clutches (16 043 bouts) were tested with Wald χ^2 .

in speed (Fig. 4c3) compared to WT siblings. This increase in speed was associated with larger bend amplitudes (12.2% increase, Fig. 4c4, Supplementary Fig. 1) that was consistent across clutches (Supplementary Fig. 2). Conversely, we observed no difference in any kinematic parameter between the two groups during routine turns that constitute one quarter of the spontaneous bouts in our assay (Fig. 4d1–d6). Altogether, these results reveal that Somatostatin 1.1 innately inhibits locomotion by reducing the amplitude of tail bends and bout duration, resulting in reduced travelled distance and speed of forward swims during spontaneous locomotion.

Discussion

This study investigated the role of Somatostatin 1.1 on innate locomotion. To quantify the innate locomotion on over a hundred of thousand bouts acquired from hundreds of zebrafish larvae, we developed high throughput behavior assays to simultaneously track hundreds of animals, and analyze the kinematics of hundreds of thousands of bouts with high accuracy and speed. We investigated the kinematics of *sst1.1* knockout mutant larvae performing slow forward swims, routine turns and fast acousto-vestibular escape responses. Our results provide new insights for the neuromodulatory function of Somatostatin 1.1 on innate locomotion in zebrafish larvae. We found that Somatostatin 1.1 inhibits slow locomotion by innately reducing distance travelled, locomotor speed and amplitude of tail bends.

Previous studies had revealed complex modulations operated by somatostatin. *Somatostatin* knockouts did not show impaired spontaneous locomotion³², while behavioral studies on SSTR2-invalidated mice indicated an impairment of motor coordination⁵⁵. In mammals, intracerebroventricular injection³⁶ as well as injection in the amygdaloid complex⁵⁶ of low doses of somatostatin increased motor activity, while higher doses reduced it⁵⁶. Furthermore, the subcutaneous administration of cysteamine, a somatostatin-depleting agent, markedly decreased motor activity^{36,37}. These observations suggest that somatostatin release could induce locomotion in a concentration-dependent manner. However, bath application of somatostatin on the lamprey spinal cord was recently shown *in vitro* to inhibit fictive locomotion by reducing burst rate⁴⁰. Our results here confirm the latter findings. We find that Somatostatin 1.1 inhibits innate locomotion by reducing speed and distance travelled. Interestingly, the reduction in speed was associated with a reduction in bend amplitude but not in tail beat frequency, suggesting that the effect of Somatostatin 1.1 on speed might differ between these experimental models. Our study revealed a moderate but consistent inhibitory effect of Somatostatin 1.1 during innate locomotion. The subtlety of the phenotype in *sst1.1^{icm40}* mutants may be due to the compensatory action of the other paralogs of the somatostatin family⁴⁷ (*sst1.2*, *sst2*, *sst5*, *sst6* and *cort*) as observed for other deleterious mutations^{57,58}. Further investigations involving the comparison with gene knockdowns shall be performed to determine whether such mechanisms occur for *sst1.1*.

We analyzed and compared fine swimming kinematics to detect the locomotor defects in mutant fish based on over eight parameters in three basic classes of bout types: slow forward swims, routine turn and fast AV escapes. By distinguishing forward swims from routine turns, we found specific effects of Somatostatin 1.1 on forward swims. A recent analysis of bout types refined their classification into thirteen different categories in zebrafish larvae⁴⁸, including two different subclasses of forward swims. Future studies will tell whether Somatostatin 1.1 is involved in the refinement of other bout types.

In mammals, the locomotor effects of somatostatin reported in the studies mentioned above are generally attributed to the action of somatostatergic neurons located in the striatum^{37,55,59}. However, the action of Somatostatin 1.1 revealed in the present study likely has a different origin since it was not found in the zebrafish homologous region of the striatum at early larval stages⁶⁰. To date, the main expression sites of *somatostatin 1.1* in the 5-dpf zebrafish brain were reported in the vagal motor nucleus⁶⁰, the hypothalamus⁶¹, the preoptic area^{62,63} and the habenula⁶⁴. In view of the literature available, these last two regions have particularly drawn our attention because they both have a potential link with locomotion.

The *sst1.1*-expressing neurons in the habenula are located in its dorsal part and project to the interpeduncular nucleus⁶⁴. The habenulo-interpeduncular pathway has recently been shown to play an important role in CO₂ avoidance behavior exhibited by zebrafish larvae⁶⁵. However, whether this pathway is recruited in innate locomotion and whether Somatostatin 1.1 participates in this process remain to be established. Furthermore, *somatostatin 1.1*-expressing neurons of the preoptic area, a subpopulation of orthopedia-expressing neurons, have been recently shown to be involved in the light-search behavior of zebrafish larvae^{62,63,66}. In such context, a plausible action of Somatostatin 1.1 may be to modulate the activity of neurons of the dopaminergic diencephalospinal tract, another subpopulation of the orthopedia-specified domain, because fish larvae lacking *somatostatin 1.1* and *orthopedia* mutants exhibit very similar defects. The dopaminergic diencephalospinal tract represents an evolutionarily conserved neuromodulatory system that is necessary for normal vertebrate locomotor development. As a matter of fact, its ablation perturbs locomotor behavior by reducing the time spent swimming but without changing the bout duration^{67,68}. However, such phenotype is different to the one reported in the present study, suggesting that the effect of Somatostatin 1.1 on innate locomotion likely does not involve the dopaminergic diencephalospinal tract.

Another important source of the *somatostatin 1.1* transcript in the zebrafish larva is the spinal cord. Previous studies both in lamprey and zebrafish have shown that somatostatin is expressed in the interoceptive neurons contacting the cerebrospinal fluid (CSF-cNs^{42,69,70}). These neurons around the central canal^{71–73} can detect chemical^{40,70} and mechanical cues^{41,44,74–76} from the cerebrospinal fluid and, in turn, modulate locomotion^{40,43,44,70,77,78}. In zebrafish, dorsal CSF-cNs that express *sst1.1* have been involved in the modulation of slow locomotion by synapsing onto V0-v interneurons⁴³. In the lamprey spinal cord, CSF-cNs have been shown to respond to acidic pH and the application of somatostatin via the SSTR2 receptor reduces burst frequency, suggesting that these cells reduce the rhythm of central pattern generators. Further studies will test whether V0-v interneurons express somatostatin receptors.

Altogether, our study demonstrated the inhibitory role of Somatostatin 1.1 in innate locomotion. As somatostatin contributes to growth and development⁷⁹, we cannot exclude that the effects observed here could be due to developmental defects. Note however that the phenotypical analysis of *sst1.1^{icm40/icm40}* larval zebrafish at the embryonic, larval and juvenile/adult stages did not show any morphological defects. Further investigations will be necessary to dissect the mechanisms underlying the depressing effects of this neuropeptide as well as the modulatory circuits involved.

Methods

Animal care. All animal experimental procedures were approved by the Institutional Ethics Committee at the Institut du Cerveau (ICM) and the European Communities Council Directive (2010/63/EU) under the animal protocol *APAFIS #16469-2018071217081175* for the housing and experimentation on *Danio rerio*. We used the AB and Tüpfel long fin (TL) strains. Fish were maintained and raised on a 14/10 h light cycle. Water temperature was maintained at 28.5 °C, pH = 7.4 and conductivity at 500 µS. We generated the zebrafish mutant line is *sst1.1^{icm40}*. All embryos and larvae used for experimentation were younger than 6 dpf and were euthanized in 0.2% tricaine (MS 222, Sandoz, Levallois-Perret, France) after experiment. Embryos were raised at low density (30 embryos per petri dish) in blue water (3 g of Instant Ocean salts and 2 mL of methylene blue at 1% in 10 L of osmosed water) until 2 dpf to minimize the development of parasites, then were transferred in the filtered facility system water whose temperature, pH and osmolarity are systematically controlled as described above.

Generation of the *sst1.1* mutant line and genotyping. To generate loss of function alleles of the *somatostatin 1.1* gene, we used CRISPR/Cas9-mediated genome editing. Two guide RNAs (CAGTGC GCACTG GATACGCGtgg) and (ACAGGAGCGCCAGTGC GCACTgg) (Integrated DNA Technologie, Coralville, USA) were designed by using online CRISPOR algorithm (<https://crispor.tefor.net/>). We co-injected the two guide RNAs with the Cas9 protein provided by Dr. Jean-Paul Concordet (MNHN, Paris, France) into 1 cell-stage WT eggs. The editing efficiency was tested after injection at 2-dpf by performing genotyping on 3 pools of 20 embryos. Genomic DNA was extracted in lysis buffer (10 mM Tris pH 8.2 mM EDTA, 0.2% Triton X-100, 200 µg/mL Proteinase K) at 55 °C for 2 h followed by 10 min of deactivation at 99 °C. We amplified a region of genomic DNA surrounding the target site using forward (3'-TCTTTTACTCTGAGACCAAATAAACAC-5') and reverse (3'-TCTATCACATTACATTAGTCAGACGTG-5') primers resulting in a 227-bp PCR product. Obtained PCR products were then digested using the MluI restriction enzyme. Typically, WT amplified fragments were cleaved into 52- and 179-bp fragments while mutated ones were left intact due to the loss of the restriction site. The amplifications from heterozygous mutants contain both cleaved and intact fragments. The *sst1.1^{icm40}* allele was identified and isolated from F1 adults by subcloning and sequencing the target site. The F1 carrier fish were selected and crossed to AB WT fish in order to generate the next generation.

Behavior recording and analysis. Behavior recordings were blindly conducted on 5-dpf larvae obtained from the incrosses of *sst1.1^{icm40/+}* mutants prior to genotyping after euthanasia of all larvae. All behavioral experiments were performed with the third generation of mutant larvae. For each experiment, larvae from one clutch obtained by mating only one male and one female were collected, and the variations between clutches were accounted for in our statistical analysis. Data from heterozygous mutant larvae are available upon request.

High-throughput behavior assays. To increase the number of fish recording simultaneously, we designed and combined multi-well plates containing 56 wells (127 mm × 140 mm) and 32 wells (80 mm × 140 mm) made from 3 mm acrylic sheets (plexiglass) plate (BFP CINDAR, Champigny-sur-Marne, France) cut by a laser cutter into 1.5 cm diameter wells holding a volume of 500 µL. The well depth was 3 mm to reduce shadow artifacts and the dark blue color was chosen for the plate to increase contrast between larvae and background. The bottom was sealed with a transparent glass coverslip glued to the pre-cut plate using a mix solution of sylgard 184 silicone elastomer base and curing agent (10:2) (Dowcorning, Midland Michigan, USA) to prevent the release of any toxic product. Larvae were illuminated from below with LED plate (R&D vision, Nogent-sur-Marne, France) with a polarized optical filter (ref. 7290110152161, Amazon, France) to provide attenuated and homogeneous light intensity. Prior to each experiment, larvae were transferred individually to the multiwell plates containing facility system water pre-warmed to 28 °C. Abnormal swimming behavior and injured animals were discarded. All larvae were acclimated for 10 min prior to recording. Images were recorded from above with two high performance Cameras: one has focus area up to 2,000 × 1,088 pixels (ref. acA2000-180 km, maximal acquisition rate 734 Hz, Basler, Ahrensburg, Germany) and another one has focus area up to 2,000 × 2,024 pixels (ref. acA2000-340 km, maximal acquisition rate 734 Hz, Basler, Ahrensburg, Germany). Each camera was connected to a computer with the video recording software Hiris ensuring maximal streaming speed (R&D vision, Nogent-sur-Marne, France) (Fig. 1c, see Supplementary Video S1).

We developed high-throughput behavior assays dedicated to the fine kinematic analysis of mutant zebrafish larvae. In our setup, we can simultaneously record 32 and up to 88 zebrafish larvae over minutes-hours at high frequency. We recorded typically at 100 Hz for monitoring spontaneous (slow) locomotion when tail beat frequency occurs below 30 Hz and at 650 Hz for acousto-vestibular escape responses for which tail beat frequency typically reaches 100 Hz at most. Each larva is isolated for the behavioral recording in order to be genotyped afterwards. We slightly reduced the spatial resolution compared to previous conditions^{41,49,53}. Due to the larger number of image files to process in parallel, we improved the speed and accuracy of our open source software ZebraZoom by reducing the occurrence of tracking errors in this low resolution low contrast setup from 30% to 0.2% (software available as open source, check <https://zebrazoom.org/>). To speed up processing by 40 folds, we ran our tracking software on a High Performance Computing (HPC) system that allows tracking hundreds

of videos simultaneously. By doing so, ZebraZoom typically took 7 h instead of 258 h to process six 10 min-long videos recorded at 100 Hz. We automated the process for managing big dataset and the file storage to be immediately accessible by the HPC system.

Escape behavior setup. Larvae were placed individually in a 32-well plate on a transparent plexiglass plate where 2 speakers (Monacor, 10 W, Bremen, Germany) were held on. A custom-made Arduino Due software and circuit was used to synchronize the acoustic stimulus and the recording (Arduino script available on Github (https://github.com/FengBQuan/Quan_et_al_2020.git)). To induce an acousto-vestibular (AV) stimulus, we delivered a 5 ms-long sine wave at 500 Hz through a 20 W amplifier (Adafruit, MAX9744, New York, USA) over two speakers at the volume of 1,305 dB. The stimulus occurred 200 ms after the beginning of the 1 s-long trial recorded at 650 Hz. Each larva was subjected to ten stimuli, with 3 min inter-trial interval to minimize habituation (Fig. 1c, see Supplementary Video S1).

Tracking system. The kinematics of zebrafish larvae were analyzed by performing tracking of the head position, head direction and 10 points along the tail using an improved version of the ZebraZoom software^{49,53,77}. First, we improved the source code of ZebraZoom to allow flexibility in the recording conditions depending on the well configuration, the frequency of recording, among other parameters. Visual inspection of the tracking added to the raw video was performed to check that the position and movement was correctly estimated. If a tracking error occurred, if a micro-movement occurred, some of the detection points along the larval body were inaccurate, or the heading direction was wrong, tracking failure was detected and systematically corrected by changing the configuration parameters. Second, ZebraZoom was initially available only on Windows operating system (OS), we adapted the source code to be executable on High Performance Computing (HPC) systems, which use Linux OS. Many videos were larger than several hundred gigabytes. We automated the management of large dataset from acquisition to the shared storage (Lustre) on ICM network, allowing the dataset to be immediately accessible by the ICM HPC system. The pipeline of ZebraZoom has been adapted to be used by multiple processors on a HPC system in order to simultaneously track numerous videos. The ICM HPC system is composed of 33 servers for a total of 924 cores and 5,623 gigabytes of memory. It is connected to the Lustre file system (<https://lustre.org>) of 2.9 petabytes (Fig. 1c, see Supplementary Video S1).

Analysis of kinematic parameters. From the heading and the tail position tracked by ZebraZoom (<https://zebrazoom.org/>), we extracted the timing of bouts and kinematic parameters per bout derived from the tail angle: bout duration, distance travelled, number of oscillations, amplitudes of each tail bend. Custom-made script packages (Matlab R2018b, The MathWorks Inc., Natick, MA, USA) were used for analysis: SlowSwim Analysis and Escape Analysis (https://github.com/FengBQuan/Quan_et_al_2020.git). For the analysis of spontaneous slow locomotion, larval zebrafish that swam less than 30 bouts over the 5 min-long recording were discarded. For all other cases, we calculated the median value of each kinematic parameter across all bouts. For the analysis of AV escape responses, we selected the first bout occurring following the stimuli with a latency below 30 ms and the first tail bend above 60°. Kinematic parameters were averaged per fish across the ten trials.

Statistical analysis. All statistical analyses for the escape and the slow swim data were conducted by using the R software⁸⁰ (version 3.6.1, <https://cran.rproject.org/>). Values were presented as mean \pm standard error of the mean (SEM). The comparisons between the two genotype groups were performed by using linear mixed models (LMMs) with a fixed effect for genotype and a random effect for the clutch. All LMMs were fitted to the kinematic parameters using the function `lmer` in the `lme4` R package. When necessary, the data were either log or square root transformed prior to the modeling to improve the model assumptions of linearity, normality and constant variance of residuals. Therefore, a significant difference between the two genotype groups was evaluated with the `Anova` function in the `car` package using a Type II Wald chi-square test. One fish (N°204) exhibited an abnormal morphology revealing an injury possibly occurring during pipetting and the subsequent data was removed from analysis. In order to perform multiple comparisons, the correlation between all kinematic parameters was evaluated for each analysis. Following a method previously described⁸¹, the value of M_{eff} was calculated for each analysis as $1 + (k - 1) \times (1 - v_{corr}/k)$, with k denoting the total number of non-independent tests and v_{corr} denoting the variance of eigenvalues from the correlation matrix of the kinematic parameters based on Spearman's rank correlation. All p-values from the Type II Wald chi-square tests were multiplied by a number of effective independent tests (M_{eff}) for adjustment. The level of statistical significance was set at $p < 0.05$ for all tests.

Received: 19 April 2020; Accepted: 27 July 2020

Published online: 17 September 2020

References

1. Delcomyn, F. Neural basis of rhythmic behavior in animals. *Science* (80-). **210**, 492–498 (1980).
2. Grillner, S. & Wallén, P. Central pattern generators for locomotion, with special reference to vertebrates. *Annu. Rev. Neurosci.* **8**, 233–261 (1985).
3. Wilson, D. M. & Wyman, R. J. Motor output patterns during random and rhythmic stimulation of locust thoracic ganglia. *Biophys. J.* **5**, 121–143 (1965).

4. Gabriel, J. P. *et al.* Serotonergic modulation of locomotion in zebrafish—endogenous release and synaptic mechanisms. *J. Neurosci.* **29**, 10387–10395 (2009).
5. Grillner, S. & Jessell, T. M. Measured motion: Searching for simplicity in spinal locomotor networks. *Curr. Opin. Neurobiol.* **19**, 572–586 (2009).
6. Pérez, C. T., Hill, R. H. & Grillner, S. Endogenous tachykinin release contributes to the locomotor activity in lamprey. *J. Neurophysiol.* **97**, 3331–3339 (2007).
7. Brazeau, P. *et al.* Hypothalamic polypeptide that inhibits the secretion of immunoreactive pituitary growth hormone. *Science* (80-). **179**, 77–79 (1973).
8. Nelson, L. E. & Sheridan, M. A. Regulation of somatostatins and their receptors in fish. *Gen. Comp. Endocrinol.* <https://doi.org/10.1016/j.ygcn.2004.12.002> (2005).
9. Frago, L. M. & Chowen, J. A. Basic physiology of the growth hormone/insulin-like growth factor axis. *Adv. Exp. Med. Biol.* https://doi.org/10.1007/0-387-26274-1_1 (2005).
10. Klein, S. E. & Sheridan, M. A. Somatostatin signaling and the regulation of growth and metabolism in fish. *Mol. Cell. Endocrinol.* <https://doi.org/10.1016/j.mce.2007.08.010> (2008).
11. Palkovits, M., Tapia-Arancibia, L., Kordon, C. & Epelbaum, J. Somatostatin connections between the hypothalamus and the limbic system of the rat brain. *Brain Res.* [https://doi.org/10.1016/0006-8993\(82\)90416-4](https://doi.org/10.1016/0006-8993(82)90416-4) (1982).
12. Sawchenko, P. E., Arias, C. & Bittencourt, J. C. Inhibin β , somatostatin, and enkephalin immunoreactivities coexist in caudal medullary neurons that project to the paraventricular nucleus of the hypothalamus. *J. Comp. Neurol.* <https://doi.org/10.1002/cne.902910209> (1990).
13. Larsen, P. J. *et al.* Cocaine- and amphetamine-regulated transcript is present in hypothalamic neuroendocrine neurons and is released to the hypothalamic–pituitary portal circuit. *J. Neuroendocrinol.* <https://doi.org/10.1046/j.1365-2826.2003.00960.x> (2003).
14. Sosulina, L., Meis, S., Seifert, G., Steinhäuser, C. & Pape, H. C. Classification of projection neurons and interneurons in the rat lateral amygdala based upon cluster analysis. *Mol. Cell. Neurosci.* <https://doi.org/10.1016/j.mcn.2006.06.005> (2006).
15. Muller, J. F., Mascagni, F. & McDonald, A. J. Postsynaptic targets of somatostatin-containing interneurons in the rat basolateral amygdala. *J. Comp. Neurol.* <https://doi.org/10.1002/cne.21185> (2007).
16. Giehl, K. & Mestres, P. Somatostatin-mRNA expression in brainstem projections into the medial preoptic nucleus. *Exp. Brain Res.* <https://doi.org/10.1007/BF00241494> (1995).
17. Katona, I., Acsády, L. & Freund, T. F. Postsynaptic targets of somatostatin immunoreactive interneurons in the rat hippocampus. *Neuroscience* [https://doi.org/10.1016/S0306-4522\(98\)00302-9](https://doi.org/10.1016/S0306-4522(98)00302-9) (1999).
18. Oliva, A. A., Jiang, M., Lam, T., Smith, K. L. & Swann, J. W. Novel hippocampal interneuronal subtypes identified using transgenic mice that express green fluorescent protein in GABAergic interneurons. *J. Neurosci.* <https://doi.org/10.1523/jneurosci.20-09-03354.2000> (2000).
19. Jinno, S. & Kosaka, T. Cellular architecture of the mouse hippocampus: A quantitative aspect of chemically defined GABAergic neurons with stereology. *Neurosci. Res.* <https://doi.org/10.1016/j.neures.2006.07.007> (2006).
20. Widmann, R., Mensdorff-Pouilly, N., Pfaller, K. & Sperk, G. Evidence for somatostatin-containing fibers projecting from the pallidum complex to the striatum of the rat. *J. Neurochem.* <https://doi.org/10.1111/j.1471-4159.1987.tb05748.x> (1987).
21. Halabisky, B., Shen, F., Huguenard, J. R. & Prince, D. A. Electrophysiological classification of somatostatin-positive interneurons in mouse sensorimotor cortex. *J. Neurophysiol.* <https://doi.org/10.1152/jn.01079.2005> (2006).
22. Wang, Y. *et al.* Anatomical, physiological and molecular properties of Martinotti cells in the somatosensory cortex of the juvenile rat. *J. Physiol.* <https://doi.org/10.1113/jphysiol.2004.073353> (2004).
23. Markram, H. *et al.* Interneurons of the neocortical inhibitory system. *Nat. Rev. Neurosci.* <https://doi.org/10.1038/nrn1519> (2004).
24. Millhorn, D. E., Hökfelt, T., Terenius, L., Buchan, A. & Brown, J. C. Somatostatin- and enkephalin-like immunoreactivities are directly colocalized in neurons in the caudal brainstem of rat. *Exp. Brain Res.* <https://doi.org/10.1007/BF00248562> (1987).
25. Millhorn, D. E. *et al.* Neurons of the ventral medulla oblongata that contain both somatostatin and enkephalin immunoreactivities project to nucleus tractus solitarius and spinal cord. *Brain Res.* [https://doi.org/10.1016/0006-8993\(87\)91197-8](https://doi.org/10.1016/0006-8993(87)91197-8) (1987).
26. Alvarez, F. J. & Priestley, J. V. Anatomy of somatostatin-immunoreactive fibres and cell bodies in the rat trigeminal subnucleus caudalis. *Neuroscience* [https://doi.org/10.1016/0306-4522\(90\)90033-Z](https://doi.org/10.1016/0306-4522(90)90033-Z) (1990).
27. Malcangio, M. GDNF and somatostatin in sensory neurons. *Curr. Opin. Pharmacol.* **3**, 41–45 (2003).
28. Hökfelt, T. *et al.* Immunohistochemical evidence for separate populations of somatostatin containing and substance P containing primary afferent neurons in the rat. *Neuroscience* **1**, 131–136 (1976).
29. Huang, J. *et al.* Circuit dissection of the role of somatostatin in itch and pain. *Nat. Neurosci.* **21**, 707–716 (2018).
30. Havlicek, V., Rezek, M. & Friesen, H. Somatostatin and thyrotropin releasing hormone: Central effect on sleep and motor system. *Pharmacol. Biochem. Behav.* [https://doi.org/10.1016/0091-3057\(76\)90063-0](https://doi.org/10.1016/0091-3057(76)90063-0) (1976).
31. Haroutunian, V., Mantin, R., Campbell, G. A., Tsuboyama, G. K. & Davis, K. L. Cysteamine-induced depletion of central somatostatin-like immunoreactivity: Effects on behavior, learning, memory and brain neurochemistry. *Brain Res.* **403**, 234–242 (1987).
32. Zeyda, T., Diehl, N., Paylor, R., Brennan, M. B. & Hochgeschwender, U. Impairment in motor learning of somatostatin null mutant mice. *Brain Res.* **906**, 107–114 (2001).
33. Stengel, A. & Taché, Y. Central somatostatin signaling and regulation of food intake. *Ann. N. Y. Acad. Sci.* **1455**(1), 98–104 (2019).
34. Dufourny, L., Delmas, O., Teixeira-Gomes, A. P., Decourt, C. & Sliwowska, J. H. Neuroanatomical connections between kisspeptin neurons and somatostatin neurons in the female and male rat hypothalamus: A possible involvement of SST1 in kisspeptin release. *J. Neuroendocrinol.* <https://doi.org/10.1111/jne.12593> (2018).
35. Agid, Y., Taquet, H., Cesselin, F., Epelbaum, J. & Javoy-Agid, F. Neuropeptides and Parkinson's disease. *Prog. Brain Res.* [https://doi.org/10.1016/S0079-6123\(08\)64600-2](https://doi.org/10.1016/S0079-6123(08)64600-2) (1986).
36. Vécsei, L. *et al.* Comparative studies with somatostatin and cysteamine in different behavioral tests on rats. *Pharmacol. Biochem. Behav.* [https://doi.org/10.1016/S0091-3057\(84\)80061-1](https://doi.org/10.1016/S0091-3057(84)80061-1) (1984).
37. Vécsei, L., Ekman, R., Alling, C. & Widerlöv, E. Influence of cysteamine and cysteine on open-field behaviour, and on brain concentrations of catecholamines, somatostatin, neuropeptide Y, and corticotropin releasing hormone in the rat. *J. Neural Transm.* **78**, 209–220 (1989).
38. Patel, Y. C. Somatostatin and its receptor family. *Front. Neuroendocrinol.* <https://doi.org/10.1006/frne.1999.0183> (1999).
39. Günther, T. *et al.* International union of basic and clinical pharmacology. CV. Somatostatin receptors: Structure, function, ligands, and new nomenclature. *Pharmacol. Rev.* **70**, 763–835 (2018).
40. Jalalvand, E., Robertson, B., Wallén, P. & Grillner, S. Ciliated neurons lining the central canal sense both fluid movement and pH through ASIC3. *Nat. Commun.* **7**, 10002 (2016).
41. Böhm, U. L. *et al.* CSF-contacting neurons regulate locomotion by relaying mechanical stimuli to spinal circuits. *Nat. Commun.* **7**, 1–8 (2016).
42. Djenoune, L. *et al.* The dual developmental origin of spinal cerebrospinal fluid-contacting neurons gives rise to distinct functional subtypes. *Sci. Rep.* **7**, 719 (2017).
43. Fidelin, K. *et al.* State-dependent modulation of locomotion by GABAergic spinal sensory neurons. *Curr. Biol.* **25**, 3035–3047 (2015).
44. Hubbard, J. M. *et al.* Intraspinous sensory neurons provide powerful inhibition to motor circuits ensuring postural control during locomotion. *Curr. Biol.* **26**, 2841–2853 (2016).

45. Petracca, Y. L. *et al.* The late and dual origin of cerebrospinal fluid-contacting neurons in the mouse spinal cord. *Development* **143**, 880–891 (2016).
46. Shin, J., Poling, J., Park, H. C. & Appel, B. Notch signaling regulates neural precursor allocation and binary neuronal fate decisions in zebrafish. *Development* <https://doi.org/10.1242/dev.001602> (2007).
47. Tostivint, H. *et al.* Molecular evolution of GPCRs: Somatostatin/urotensin II receptors. *J. Mol. Endocrinol.* **52**, T61–T86 (2014).
48. Marques, J. C., Lackner, S., Félix, R. & Orger, M. B. Structure of the zebrafish locomotor repertoire revealed with unsupervised behavioral clustering. *Curr. Biol.* <https://doi.org/10.1016/j.cub.2017.12.002> (2018).
49. Mirat, O., Sternberg, J. R., Severi, K. E. & Wyart, C. ZebraZoom: An automated program for high-throughput behavioral analysis and categorization. *Front. Neural Circuits* **7**, 1–12 (2013).
50. Budick, S. A. & O'Malley, D. M. Locomotor repertoire of the larval zebrafish: Swimming, turning and prey capture. *J. Exp. Biol.* **203**, 2565–2579 (2000).
51. Kimmel, C. B., Eaton, R. C. & Powell, S. L. Decreased fast-start performance of zebrafish larvae lacking mauthner neurons. *J. Comp. Physiol. A* <https://doi.org/10.1007/BF00606274> (1980).
52. Liu, K. S. & Fetcho, J. R. Laser ablations reveal functional relationships of segmental hindbrain neurons in zebrafish. *Neuron* [https://doi.org/10.1016/S0896-6273\(00\)80783-7](https://doi.org/10.1016/S0896-6273(00)80783-7) (1999).
53. Knafo, S. *et al.* Mechanosensory neurons control the timing of spinal microcircuit selection during locomotion. *Elife* <https://doi.org/10.7554/eLife.25260> (2017).
54. Wu, M.-Y. *et al.* Spinal sensory neurons project onto hindbrain to stabilize posture and enhance speed. *Curr. Biol.* <https://doi.org/10.1095/biolreprod.108.072645> (2020).
55. Allen, J. P. *et al.* Somatostatin receptor 2 knockout/lacZ knockin mice show impaired motor coordination and reveal sites of somatostatin action within the striatum. *Eur. J. Neurosci.* **17**, 1881–1895 (2003).
56. Rezek, M., Havlicek, V., Hughes, K. R. & Friesen, H. Behavioural and motor excitation and inhibition induced by the administration of small and large doses of somatostatin into the amygdala. *Neuropharmacology* **16**, 157–162 (1977).
57. Rossi, A. *et al.* Genetic compensation induced by deleterious mutations but not gene knockdowns. *Nature* **524**(7564), 230–233. <https://doi.org/10.1038/nature14580> (2015).
58. El-Brolosy, M. A. *et al.* Genetic compensation triggered by mutant mRNA degradation. *Nature* **568**(7751), 193–197. <https://doi.org/10.1038/s41586-019-1064-z> (2019).
59. Gazan, A., Rial, D. & Schiffmann, S. N. Ablation of striatal somatostatin interneurons affects MSNs morphology, electrophysiological properties and increases cocaine-induced hyperlocomotion in mice. *Eur. J. Neurosci.* <https://doi.org/10.1111/ejn.14581> (2019).
60. Devos, N. *et al.* Differential expression of two somatostatin genes during zebrafish embryonic development. *Mech. Dev.* **115**, 133–137 (2002).
61. Herget, U. & Ryu, S. Coexpression analysis of nine neuropeptides in the neurosecretory preoptic area of larval zebrafish. *Front. Neuroanat.* **9**, 1–11 (2015).
62. Fernandes, A. M., Beddows, E., Filippi, A. & Driever, W. Orthopedia transcription factor otpa and otpb paralogous genes function during dopaminergic and neuroendocrine cell specification in larval zebrafish. *PLoS ONE* **8**, e75002 (2013).
63. Horstick, E. J., Bayley, Y., Sinclair, J. L. & Burgess, H. A. Search strategy is regulated by somatostatin signaling and deep brain photoreceptors in zebrafish. *BMC Biol.* **15**, 1–16 (2017).
64. deCarvalho, T. N. *et al.* Neurtransmitter map of the asymmetric dorsal habenular nuclei of Zebrafish. *Genesis* <https://doi.org/10.1002/dvg.22785> (2014).
65. Koide, T., Yabuki, Y. & Yoshihara, Y. Terminal nerve GnRH3 neurons mediate slow avoidance of carbon dioxide in larval zebrafish. *Cell Rep.* **22**, 1115–1123 (2018).
66. Fernandes, A. M. *et al.* Deep brain photoreceptors control light-seeking behavior in zebrafish larvae. *Curr. Biol.* **22**, 2042–2047 (2012).
67. Jay, M., De Faveri, F. & McDearmid, J. R. Firing dynamics and modulatory actions of supraspinal dopaminergic neurons during zebrafish locomotor behavior. *Curr. Biol.* <https://doi.org/10.1016/j.cub.2014.12.033> (2015).
68. Lambert, A. M., Bonkowsky, J. L. & Masino, M. A. The conserved dopaminergic diencephalospinal tract mediates vertebrate locomotor development in zebrafish larvae. *J. Neurosci.* <https://doi.org/10.1523/JNEUROSCI.1638-12.2012> (2012).
69. Jalalvand, E., Robertson, B., Wallén, P., Hill, R. H. & Grillner, S. Laterally projecting cerebrospinal fluid-contacting cells in the lamprey spinal cord are of two distinct types. *J. Comp. Neurol.* **522**, 1753–1768 (2014).
70. Jalalvand, E., Robertson, B., Tostivint, H., Wallén, P. & Grillner, S. The spinal cord has an intrinsic system for the control of pH. *Curr. Biol.* **26**, 1346–1351 (2016).
71. Agduhr, E. Über ein zentrales Sinnesorgan (?) bei den Vertebraten. *Z. Anat. Entwicklungsgesch.* **66**, 223–360 (1922).
72. Kolmer, W. Das „Sagittalorgan“ der Wirbeltiere. *Z. Anat. Entwicklungsgesch.* **60**, 652–717 (1921).
73. Vigh, B. & Vigh-Teichmann, I. Actual problems of the cerebrospinal fluid-contacting neurons. *Microsc. Res. Tech.* **41**(1), 57–83. [https://doi.org/10.1002/\(SICI\)1097-0029\(19980401\)41:1%3c57::AID-JEMT6%3e3.0.CO;2-R](https://doi.org/10.1002/(SICI)1097-0029(19980401)41:1%3c57::AID-JEMT6%3e3.0.CO;2-R) (1998).
74. Desban, L. *et al.* Regulation of the apical extension morphogenesis tunes the mechanosensory response of microvilliated neurons. *PLoS Biol.* **17**(4), e30 (2019).
75. Orts-Del'Immagine, A. *et al.* Sensory neurons contacting the cerebrospinal fluid require the Reissner fiber to detect spinal stretch in vivo. *Curr. Biol.* **30**(5), 827–839.e4 (2020).
76. Sternberg, J. R. *et al.* Pkd2l1 is required for mechanoreception in cerebrospinal fluid-contacting neurons and maintenance of spine curvature. *Nat. Commun.* <https://doi.org/10.1038/s41467-018-06225-x> (2018).
77. Böhm, U. L. *et al.* CSF-contacting neurons regulate locomotion by relaying mechanical stimuli to spinal circuits. *Nat. Commun.* **7**, 10866 (2016).
78. Wyart, C. *et al.* Optogenetic dissection of a behavioral module in the vertebrate spinal cord. *Nature* **461**, 407–410 (2010).
79. Lleras-Forero, L. *et al.* Neuropeptides: developmental signals in placode progenitor formation. *Dev. Cell.* **26**(2), 195–203. <https://doi.org/10.1016/j.devcel.2013.07.001> (2013).
80. core Team, R. R: A Language and Environment for Statistical Computing. *R Found. Stat. Comput. Vienna, Austria* (2018).
81. Derringer, J. A simple correction for non-independent tests. *PsyArXiv* **10**, 1–15. <https://doi.org/10.31234/osf.io/f2tyw> (2018).

Acknowledgements

We thank Sophie Nunes-Figueiredo, Monica Dicu and Antoine Arneau from Animalliance for fish care. We thank Dr. Adrien Jouary from Champalimaud Center for the Unknown and Pierre Tissier from the ICM Fab Lab for help building the acoustic escape setup. We thank the ICM IT support for help with implementing behavior data storage and automating analysis process. We thank Yannick Marie from the ICM genotype facility iGenSeq for help with high-throughput genotyping. This work was supported by an European Research Council (ERC) Starting Grants “Optoloco” #311673, ERC Proof of Concept in 2018 (POC) #825273, New York Stem Cell Foundation (NYSCF) Robertson Award 2016 Grant #NYSCF-R-NI39. This work received support from the Agence Nationale pour la Recherche (ANR) “Investissements d’Avenir” ANR-10-IAIHU-06 and ANR-11-INSB-0011

(NeurATRIS: Translational Research Infrastructure for Biotherapies in Neurosciences, <https://www.agence-nationale-recherche.fr/en/>).

Author contributions

F.B.Q. generated the *sst1.1* mutant line with the help of F.K. and L.D. J.R. performed the characterization of the *sst1.1* mutant. F.B.Q. developed the high-throughput behavior assays with the help of M.K., O.M. and H.M. F.B.Q. performed all behavioral experiments, and wrote with C.W. the scripts for behavior analysis. F.-X.L. wrote custom-made scripts in R statistics for the behavioral data analysis. L.D. provided useful feedback on the data for analysis. F.B.Q. and C.W. designed experiments, analyzed data; C.W. conceived and supervised the project; C.W. and H.T. supervised research. F.B.Q. and C.W. wrote the manuscript with the feedback from all authors.

Competing interests

O.M. work as a free-lance to develop the software ZebraZoom for other scientists in Academia (open-source software available for download, see <https://zebrazoom.org>). The other authors declare no competing interests.

Additional information

Supplementary information is available for this paper at <https://doi.org/10.1038/s41598-020-72039-x>.

Correspondence and requests for materials should be addressed to C.W.

Reprints and permissions information is available at www.nature.com/reprints.

Publisher's note Springer Nature remains neutral with regard to jurisdictional claims in published maps and institutional affiliations.



Open Access This article is licensed under a Creative Commons Attribution 4.0 International License, which permits use, sharing, adaptation, distribution and reproduction in any medium or format, as long as you give appropriate credit to the original author(s) and the source, provide a link to the Creative Commons license, and indicate if changes were made. The images or other third party material in this article are included in the article's Creative Commons license, unless indicated otherwise in a credit line to the material. If material is not included in the article's Creative Commons license and your intended use is not permitted by statutory regulation or exceeds the permitted use, you will need to obtain permission directly from the copyright holder. To view a copy of this license, visit <http://creativecommons.org/licenses/by/4.0/>.

© The Author(s) 2020