



# Very Low Phytoplankton Diversity in a Tropical Saline-Alkaline Lake, with Co-dominance of *Arthrospira fusiformis* (Cyanobacteria) and *Picocystis salinarum* (Chlorophyta)

Cécile Bernard, Arthur Escalas, Nicolas Villeriot, Hélène Agogué, Mylène Hugoni, Charlotte Duval, Claire Carré, Patrice Got, Gérard Sarazin, Didier Jézéquel, et al.

## ► To cite this version:

Cécile Bernard, Arthur Escalas, Nicolas Villeriot, Hélène Agogué, Mylène Hugoni, et al.. Very Low Phytoplankton Diversity in a Tropical Saline-Alkaline Lake, with Co-dominance of *Arthrospira fusiformis* (Cyanobacteria) and *Picocystis salinarum* (Chlorophyta). *Microbial ecology*, 2019, 78 (3), pp.603-617. 10.1007/s00248-019-01332-8 . mnhn-02292401

**HAL Id: mnhn-02292401**

**<https://mnhn.hal.science/mnhn-02292401>**

Submitted on 19 Sep 2019

**HAL** is a multi-disciplinary open access archive for the deposit and dissemination of scientific research documents, whether they are published or not. The documents may come from teaching and research institutions in France or abroad, or from public or private research centers.

L'archive ouverte pluridisciplinaire **HAL**, est destinée au dépôt et à la diffusion de documents scientifiques de niveau recherche, publiés ou non, émanant des établissements d'enseignement et de recherche français ou étrangers, des laboratoires publics ou privés.



# Very Low Phytoplankton Diversity in a Tropical Saline-Alkaline Lake, with Co-dominance of *Arthrospira fusiformis* (Cyanobacteria) and *Picocystis salinarum* (Chlorophyta)

C. Bernard<sup>1</sup> · A. Escalas<sup>1</sup> · N. Villeriot<sup>1,2</sup> · H. Agogué<sup>5</sup> · M. Hugoni<sup>3</sup> · C. Duval<sup>1</sup> · C. Carré<sup>2</sup> · P. Got<sup>2</sup> · G. Sarazin<sup>4</sup> · D. Jézéquel<sup>4</sup> · C. Le Boulanger<sup>2</sup> · V. Grossi<sup>6</sup> · M. Ader<sup>4</sup> · M. Troussellier<sup>2</sup>

Received: 11 December 2018 / Accepted: 16 January 2019

© The Author(s) 2019

## Abstract

Lake Dziani Dzaha (Mayotte Island, Indian Ocean) is a tropical thalassohaline lake which geochemical and biological conditions make it a unique aquatic ecosystem considered as a modern analogue of Precambrian environments. In the present study, we focused on the diversity of phytoplanktonic communities, which produce very high and stable biomass (mean<sub>2014–2015</sub> = 652 ± 179 µg chlorophyll *a* L<sup>-1</sup>). As predicted by classical community ecology paradigms, and as observed in similar environments, a single species is expected to dominate the phytoplanktonic communities. To test this hypothesis, we sampled water column in the deepest part of the lake (18 m) during rainy and dry seasons for two consecutive years. Phytoplanktonic communities were characterized using a combination of metagenomic, microscopy-based and flow cytometry approaches, and we used statistical modeling to identify the environmental factors determining the abundance of dominant organisms. As hypothesized, the overall diversity of the phytoplanktonic communities was very low (15 OTUs), but we observed a co-dominance of two, and not only one, OTUs, viz., *Arthrospira fusiformis* (Cyanobacteria) and *Picocystis salinarum* (Chlorophyta). We observed a decrease in the abundance of these co-dominant taxa along the depth profile and identified the adverse environmental factors driving this decline. The functional traits measured on isolated strains of these two taxa (i.e., size, pigment composition, and concentration) are then compared and discussed to explain their capacity to cope with the extreme environmental conditions encountered in the aphotic, anoxic, and sulfidic layers of the water column of Lake Dziani Dzaha.

**Keywords** Phytoplankton · Diversity · Cyanobacteria · Picoeukaryote · Extreme environment · Thalassohaline lake

**Electronic supplementary material** The online version of this article (<https://doi.org/10.1007/s00248-019-01332-8>) contains supplementary material, which is available to authorized users.

✉ C. Bernard  
cecile.bernard@mnhn.fr

<sup>1</sup> UMR 7245 MCAM, Muséum National d'Histoire Naturelle - CNRS, 57 Rue Cuvier, CP 39, 75231 Paris Cedex 05, France

<sup>2</sup> UMR 9190 MARBEC, CNRS - Université de Montpellier - IRD - IFREMER, Place Eugène Bataillon, 34095 Montpellier Cedex 5, France

<sup>3</sup> UMR 5557 Ecologie Microbienne, Université Lyon 1 - CNRS - INRA, 69220 Villeurbanne Cedex, France

<sup>4</sup> UMR 7154 Institut de Physique du Globe de Paris - Sorbonne Paris Cité, Université Paris Diderot, 1 rue de Jussieu, 75005 Paris, France

<sup>5</sup> UMR 7266 LIENSs, Université de La Rochelle - CNRS, 2 rue Olympe de Gouges, 17000 La Rochelle, France

<sup>6</sup> Laboratoire de Géologie de Lyon, Université de Lyon - CNRS - UCBL - ENSL, 69220 Villeurbanne, France

## Introduction

Recently, a new saline-alkaline lake was described on Mayotte Island in the West Indian Ocean, the Lake Dziani Dzaha. The initial data obtained on this crater lake showed characteristics distinct from those reported previously for saline-alkaline lakes [1]. Located at the bottom of a volcanic crater, this small (0.2 km<sup>2</sup>) lake has no hydrological connection with the surrounding Indian Ocean but nonetheless its water exhibits dissolved element ratios similar to those of seawater. This lake also has some specific physico-chemical characteristics such as a completely anoxic water column under a thin euphotic surface layer (maximum depth of 1.5 m), slightly alkaline (0.23 mol L<sup>-1</sup>), and has high sulfide concentration (2–6 mM) below a depth of 2.2 m during the rainy season. Based on these characteristics, Lake Dziani Dzaha is considered a modern thalassohaline analogue of Precambrian environment [2]. Moreover, due to the distance of Mayotte island

from the African continent ( $\approx 500$  km), this lake can be considered as an isolated ecosystem when compared to continental saline-alkaline lakes and especially those linked by hydrological connections, such as those of the Great Rift Valley [3] or the numerous crater lakes encountered in Ethiopia [4–7], Kenya [8–12], Uganda [13–15], or South Africa [16]. Local external influences also appear limited by the characteristics of the lake's watershed that is only constituted by the slopes of the small volcanic crater ( $0.9 \text{ km}^2$ ; Mathelin [17]) without any river or permanent human settlement, but with limited food crop cultivation. Therefore, Lake Dziani Dzaha is not significantly impacted by anthropogenic activities and its hydrological characteristics are mostly dependent on the seasonal climatology, which alternates dry and rainy seasons [1].

The initial biological studies of this lake [1, 18] revealed the following: (i) the absence of macroorganisms similar to those observed in most soda-lakes (birds, fishes, invertebrates, rotifers, and cladoceres), which are known to graze phytoplanktonic communities; (ii) a large amount of phytoplanktonic biomass is produced in a stable manner; and (iii) a very low number of phytoplanktonic taxa. However, these previous characterizations of the phytoplanktonic communities were done using traditional approaches such as microscopy and strain isolation, which are now recognized to have limitations (in terms of sampling depth and culture bias) and to provide an incomplete picture of the entire community [19–21]. For instance, several recent studies based on next-generation sequencing (NGS) have shown that the phytoplanktonic communities of saline-alkaline lakes from Kenya and Ethiopia [12, 22, 23] contained a higher richness than previously estimated by microscopic methods, with a number of taxa comparable to that of other aquatic ecosystems.

In this context, we wanted to build on the results from the above-mentioned study of Lake Dziani Dzaha and further characterize the phytoplanktonic community of this lake using a combination of NGS and more classical tools such as microscopy and flow cytometry (FCM).

Doing so, we want to answer the following questions: (i) What is the richness and the composition of the phytoplanktonic community in the Lake Dziani Dzaha? More specifically, we want to determine whether rare taxa exist, as reported in most, if not all, saline alkaline ecosystems, or if they are excluded due to the isolation of the lake and limited environmentally suitable niche for photosynthetic organisms. (ii) Do the drastic abiotic characteristics (high salinity, high pH, limited euphotic depth, anoxia, and sulfidic layer) coupled with high nutrient concentrations and the absence of large grazers lead to the dominance of only one phytoplanktonic species as would be expected according to ecological theories such as the “Killing the winner” hypothesis [24] or the “competitive exclusion” principle [25]?

## Material and Methods

### Study Site, Sampling, and Environmental Parameters

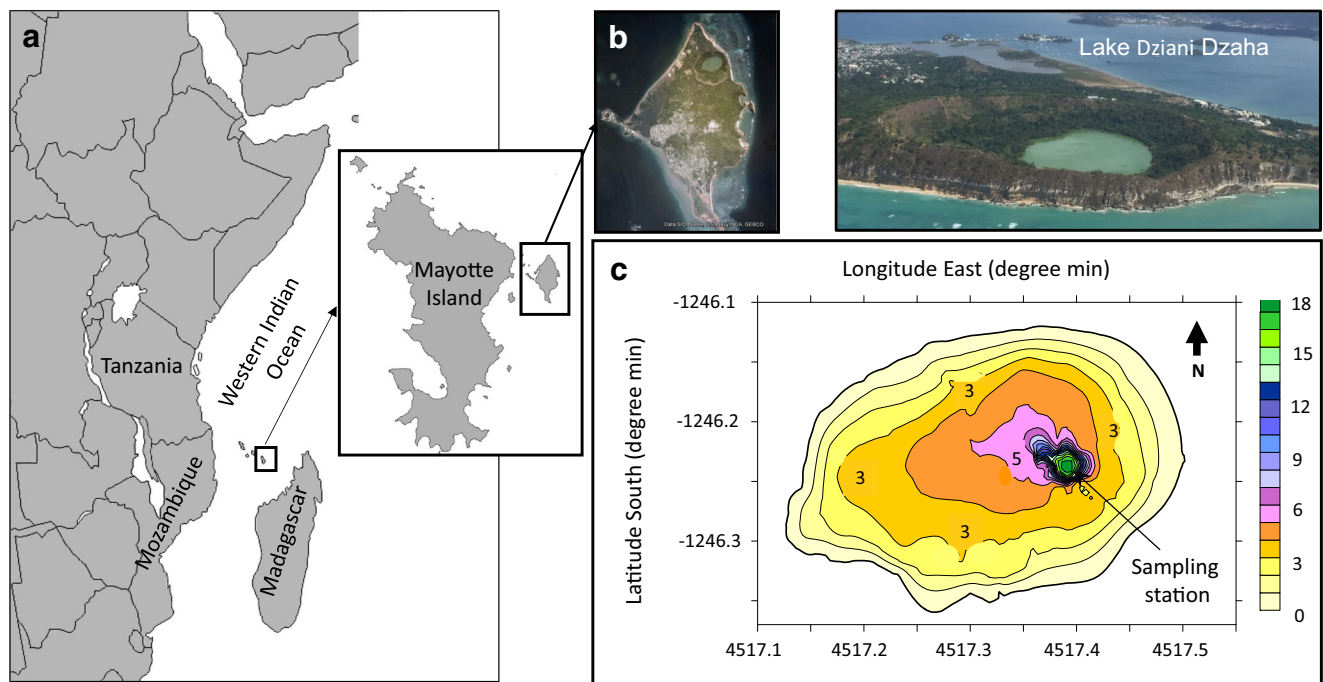
Lake Dziani Dzaha is a volcano crater lake located in Mayotte Island of the Comoros Archipelago, West Indian Ocean ( $12^\circ 46' 15.6'' \text{ S}$ ;  $45^\circ 17' 19.2'' \text{ E}$ ). The lake surface area is approximately  $0.25 \text{ km}^2$  with a mean depth of approximately 4 m and a narrow 18-m-deep pit, located in the eastern part of the lake (Fig. 1). This tropical crater lake is characterized by high salinity (up to 70 psu) and alkalinity ( $0.23 \text{ mol L}^{-1}$ ), conductivity between 77.1 and 79.7 mS and pH between 9 and 9.5 [1]. The lake is very turbid (Secchi transparency  $< 0.15$  m), and the concentration of chlorophyll *a* (Chl*a*) is very high (up to  $875 \mu\text{g L}^{-1}$  in 2010–2011). The lake is also characterized by the absence of zooplankton, fishes, and lesser flamingos [1]. Actively growing stromatolites have been observed in the shallow waters of the lake shores [26].

Four sampling campaigns were conducted in April and October 2014 and in April and November 2015. The precipitation data for the corresponding sampling campaigns were obtained from the Météo-France Meteorological Observation Station located near Lake Dziani Dzaha (<http://www.meteo-climat.fr>). Discrete water sampling was carried out at the deepest point of the lake (18 m) (Fig. 1) using a horizontal 1.2-L Niskin bottle. Water samples were collected at 16 depths (0, 0.25, 0.5, 0.75, 1, 1.5, 2.5, 3.5, 5, 7, 9, 11, 13, 15, 17, 18 m) and the samples for biological and chemical analyses were processed in the field laboratory within 2 h. The vertical profile of salinity/conductivity, temperature, pH, dissolved  $\text{O}_2$ , and redox potential were performed using YSI 6600 (CTD- $\text{O}_2$ -pH-redox) (YSI, Yellow Springs, OH, USA) and/or SDOT nke ( $\text{O}_2$  optode). The attenuation coefficient  $K_d$  was determined from discrete PAR measurement profiles using a SPAR nke (PAR). The total alkalinity was determined by Gran titration [27]. The content of soluble sulfide ( $\Sigma\text{S(-II)}$ ;  $\text{H}_2\text{S}$ ), ammonium and ammonia ( $\Sigma\text{N(-III)}$ ;  $\text{NH}_4$ ), and soluble-reactive phosphorus (SRP;  $\text{PO}_4^{3-}$ ) was determined colorimetrically in the field lab using the Aqualytic SpectroDirect spectrophotometer and Merck reagent kits. The concentration of Chl*a* was analyzed after extraction using 96% ethanol by ultrasonication in an ice bath for 30", and further extraction was allowed overnight at  $4^\circ \text{C}$  in dark. The extract was filtered and the filtrate was analyzed spectrophotometrically at 400–750 nm. The concentration of Chl*a* was calculated according to Ritchie [28].

### Cell Abundance

#### Picophytoplankton

Cell abundances were estimated for all the sampling depths, except for the 18-m depth, which contained a lot of sediment particles that disturb the flow cytometric analysis. Sub-



**Fig. 1** Lake Dziani Dzaha (Mayotte Island) is an isolated, round crater lake with an area of approximately 0.25 km<sup>2</sup> (a, b). The bathymetric map showed a mean depth of approximately 4 m and an 18-m deep pit, located in the eastern part of the lake (c). b, right picture: ©M. Troussellier, CNRS

samples (1.6 mL) of the lake water samples from each depth were preserved using 0.2- $\mu$ m filtered formaldehyde solution (2% final concentration) and stored in liquid nitrogen ( $-196^{\circ}\text{C}$ ). They were further stored at  $-80^{\circ}\text{C}$  before analysis using a FACSaria Flow cytometer (Becton Dickinson, San Jose, CA, USA) equipped with the HeNe air-cooled laser (633 nm, 20 mW). The cells excited at 633 nm were detected and enumerated according to their forward-angle light scatter (FALS) and right angle light scatter (RALS) properties, and red fluorescence from phycocyanin (660/20 nm) and chlorophyll (675/20 nm) pigments. Fluorescent beads (1–2  $\mu$ m) were systematically added to each sample. True count beads (Becton Dickinson, San Jose, CA, USA) were added to determine the volume analyzed. List-mode files were analyzed using the BD FACSDiva software. This method discriminates autotrophic picoeukaryote by using their chlorophyll pigments [29]. Pure culture of *Picocystis salinarum* ALCP 144.1 (Algothèque Laboratoire Cryptogamie Paris, Museum National of Natural History) was used to confirm the flow cytometric signature of this autotrophic group.

## Cyanobacteria

Cell abundance was estimated for the same sampling depths than for picophytoplankton. Sub-samples (9 mL) of the lake water samples were collected at each sampling depth for microscopic examination, identification, and measurement of cyanobacterial cells. The samples were fixed with 5% formaldehyde and the taxa were identified as described by Cellamare

et al. [18]. The cyanobacterial count data were obtained by the Utermöhl method using an Eclipse TS100 inverted microscope at  $\times 600$  magnification (Nikon Instruments Inc., Melville, NY, USA) as described in Catherine et al. [30].

## Functional Traits of Isolated *Arthrospira fusiformis* and *Picocystis salinarum* Strains

### Culture Conditions and Cells Counting

Six clonal non-axenic strains of *A. fusiformis* PMC 851.14, 894.15 and 917.15 (Paris Museum Collection) and *P. salinarum* ALCP 144.1, 145.1 and 146.1, isolated from Lake Dziani Dzaha were used. Each strain was grown as batch cultures in 250-mL Erlenmeyer flasks containing 200 mL of Z8-salt medium [31], at  $25^{\circ}\text{C}$  under  $30\ \mu\text{mol photons m}^{-2}\text{ s}^{-1}$  provided by daylight fluorescent tubes (OSRAM Lumilux®, München, Germany), with a 16:8-h light/dark photoperiod. Sampling was performed at the end of exponential growth phase. The cell abundance was estimated by Malassez-based method for each culture as described by Catherine et al. [32]. Three replicates were counted for each culture.

### Cell Size Estimation

Length of *Arthrospira* filaments were measured and counted by the Utermöhl method using an inverted microscope at  $\times 600$  magnification. Cell number per filament was then counted using an upright microscope (on at least 50 filaments), at

$\times 1000$  magnification. We applied the mean of cell number per filament length to each sample and *Arthrospira* filaments were then converted to cell abundance ( $\text{mL}^{-1}$ ). This method is described in the SOP Cyanobacterial samples: preservation, enumeration, and biovolume measurements [32].

### Cell Pigment Concentrations

Four milliliters of each culture replicate were used for phyco-cyanin analysis as described by Yéprémian et al. [33]. For lipophilic pigments, 18 mL of each culture was filtered using GF/F Whatman filters, extracted with methanol, and analyzed according to Ras et al. [34]. The results are expressed as the amount of each pigment by cell volume ( $\text{fg } \mu\text{m}^{-3}$ ). The cell volume of the two species was computed from their respective sizes [18] using models for the specific cellular shape of each species [35].

### DNA Extraction and Illumina Sequencing

NGS analysis was performed on samples collected at 0.5, 1, 2.5, 5, 11, 15, and 17 m depths. Water subsamples (20 mL) were filtered through 3- and 0.2- $\mu\text{m}$  pore-size polycarbonate filters (Millipore, pressure  $< 10$  kPa), and then stored at  $-20$  °C until nucleic acid extraction. The DNA was extracted separately from both the filters, using the Power Water DNA isolation kit (MoBio Laboratories) as described by the manufacturer for maximum yield. The DNA quality was analyzed by 1% (w/v) agarose gel electrophoresis and quantified using NanoDrop. The amplification of bacterial V3–V5 region of the 16S rRNA genes was performed in triplicate, using the universal primers 357F [36] and 926R [37] allowing the amplification of bacteria and eukaryotic chloroplast sequences, respectively. Additionally, the DNA was extracted without any biological matrix, and it was considered as a negative control to evaluate ambient contamination. High-throughput sequencing was achieved after pooling the PCR-triplicates and a multiplexing step, by HiSeq Rapid Run 300 bp PE technology using the Illumina HiSeq 2500 system (GATC Biotech, Konstanz, Germany).

### Sequence Processing

The 16S rRNA paired-end reads obtained from both the filters were merged with a maximum of 10% mismatches in the overlap region using FLASH [38]. The denoising procedure was carried out by discarding reads containing ambiguous bases (N) or reads outside the range of expected length (e.g., 450–580 bp). After dereplication, the sequences were clustered using SWARM [39] that uses a local clustering threshold. Chimeric sequences were removed using VSEARCH [40]. Furthermore, the sequences representing  $< 0.005\%$  of the total number of sequences [41] along with singletons were also removed. A preliminary taxonomic affiliation was

performed with both RDP Classifier [42] and BLASTN+ [43] against the 128 SILVA database [44]. This procedure was automated in the FROGS pipeline [45]. The contaminant operational taxonomic units (OTUs) identified from the control samples were removed.

### Taxonomic and Phylogenetic Affiliation

The affiliation of the phytoplanktonic OTUs was carried out using the National Center for Biotechnology Information Basic Local Alignment Search Tool (NCBI BLAST) tool on three databases: (i) GenBank sequence database (NCBI 1998), (ii) sequences of cyanobacterial PMC strains isolated from Lake Dziani Dzaha [18], and (iii) sequences in the PhytoRef database [46]. A phylogenetic approach was then used to create a 16S rRNA gene phylogeny with selected sequences based on the first affiliation obtained by similarity analysis (NCBI BLAST) and the reference databases (Genbank, PMC strains, and PhytoRef). Phylogenetic reconstruction was performed using the MEGA6 software with 1000 iterations, and according to three methods: neighbor joining (NJ), maximum likelihood (ML), and maximum parsimony (MP). The outgroups were selected based on the results of similar studies: (i) *Rhodospseudomonas palustris* for cyanobacteria and (ii) *Aulacoseira ambigua* (Ochrophyta), (iii) *Vitrella brassicaformis* (Myxozoa), and (iv) *Euglena gracilis* (Chlorophyta) for photosynthetic eukaryotes [47].

### Data Analyses

Partial least square (PLS) regression was used to identify the environmental factors ( $X_i$ ) affecting the abundance of *P. salinarum* and *A. fusiformis* ( $Y_i$ ). This method is particularly suited for analysis of data with several explanatory variables ( $X_i$ ) and a limited number of observations ( $Y_i$ ), and in cases where there is multicollinearity among analyzed variables. In our case, we applied PLS as the data points were collected along a gradient and constituted non-statistically independent observations which resulted in significant correlations across the potential explanatory variables (such as temperature, salinity,  $\text{H}_2\text{S}$ , and  $\text{NH}_4^+$ ) [48, 49]. All the analyses were performed using the XLSTAT-Ecology software (Addinsoft, Paris, France).

## Results

### Environmental Characteristics of the Water Column

All four campaigns were characterized by high PAR values ( $2539\text{--}2787 \mu\text{M m}^{-2} \text{s}^{-1}$ ) at the lake surface. There were significant differences in rainfall between seasons: 1138–1056 mm during the rainy season (2014–2015, from



November to March) and 53–154 mm during the dry season (2014–2015, from April to October). Several physico-chemical characteristics were clearly identified depending on the season and depth, along the water column (Fig. 2). The water column exhibited two distinct physico-chemical profiles depending on the sampling period:

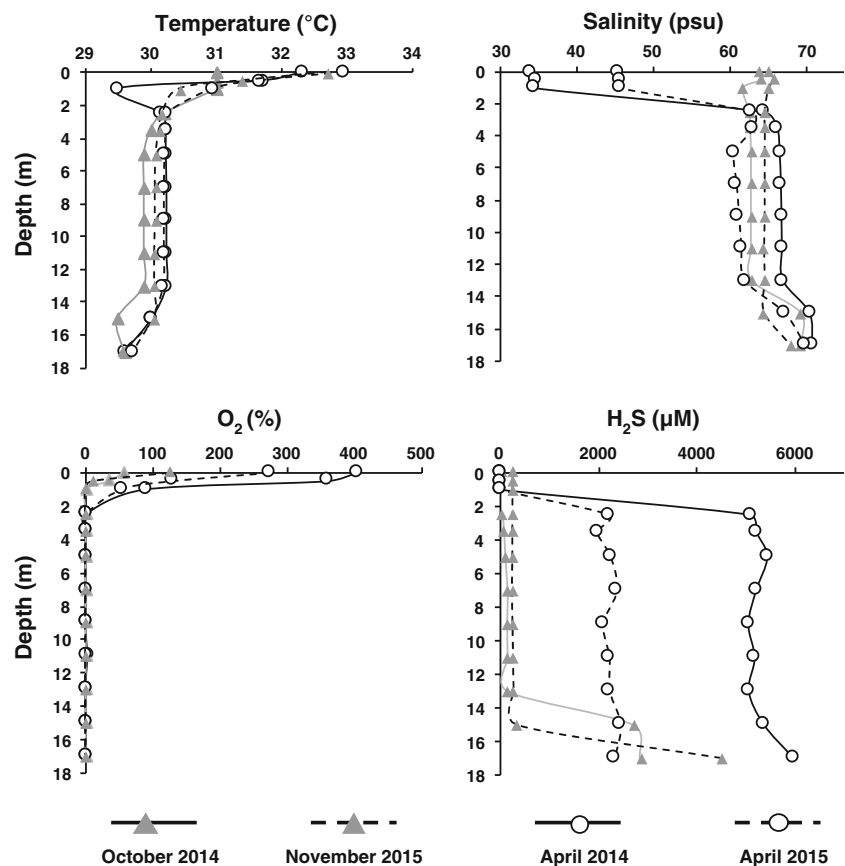
- At the end of the rainy season (April 2014 and 2015), we observed a stratified water column with two distinct layers well separated by physical and chemical clines. The surface layer ( $\leq 2.2$  m) was characterized by weak light penetration ( $K_d = 11.6$ – $12.7$   $\text{m}^{-1}$ ), temperatures between  $30$  °C and  $33$  °C, high level of oxygen saturation ( $15\%$ – $400\%$ ), low level of  $\text{H}_2\text{S}$  ( $\leq 100$   $\mu\text{M}$ ), high pH values ( $> 9.5$  in 2014 and  $> 9.2$  in 2015), and moderate salinity ( $35$ – $45$  psu). The intermediate layer ( $2.2$ – $16$  m) was characterized by the absence of light penetration, no oxygen, lower pH ( $9.5$ – $8.9$  in 2014 and  $9.0$ – $8.7$  in 2015), and constant salinity ( $\approx 65$  psu). Low  $\text{NH}_4^+$  and  $\text{PO}_4^{3-}$  concentrations ( $15 \pm 14$  and  $23 \pm 38$   $\mu\text{M}$ , respectively) were observed in the surface and intermediate layers during the stratified season.
- At the end of the dry season (October 2014 and November 2015), light penetration was weak ( $K_d =$

$18.4$   $\text{m}^{-1}$ ), temperature was high, and oxygen saturation was observed at the surface of the lake ( $\leq 2.2$  m). Furthermore, the salinity, pH, and  $\text{H}_2\text{S}$  clines disappeared leading to a non-stratified water column (salinity  $\approx 65$  psu,  $\text{pH} \approx 9.0$ ,  $\text{H}_2\text{S} \approx 200$   $\mu\text{M}$ ), from the surface to the deep permanent layers. Strong gradients of inorganic nutrients were also observed in the lake column, with low  $\text{NH}_4^+$  and  $\text{PO}_4^{3-}$  concentrations ( $15 \pm 14$  and  $23 \pm 38$   $\mu\text{M}$ , respectively) in the intermediate layer and very high and variable  $\text{NH}_4^+$  and  $\text{PO}_4^{3-}$  concentrations ( $2653 \pm 2133$  and  $172 \pm 114$   $\mu\text{M}$ , respectively) in the intermediate and bottom layers.

During both seasons and all the sampling campaigns, a deep layer characterized by no light penetration, no oxygen, high salinity ( $\approx 70$  psu), low pH values ( $< 9.0$ ), and very high  $\text{H}_2\text{S}$  concentration ( $> 2000$   $\mu\text{M}$ ) was observed at the bottom of the water column ( $14$ – $17$  m).

Phytoplankton biomass, estimated by  $\text{Chl}a$  concentration, also exhibited vertical gradients, with higher and less variable values observed in the upper layers (mean<sub>2014–2015</sub> =  $652 \pm 179$   $\mu\text{g L}^{-1}$ ) than those in the bottom layers (mean<sub>2014–2015</sub> =  $171 \pm 201$   $\mu\text{g L}^{-1}$ ).

**Fig. 2** Changes in the main physico-chemical characteristics (temperature, salinity, soluble sulfide ( $\text{H}_2\text{S}$ ), and oxygen saturation ( $\%\text{O}_2$ )) as a function of depth and sampling campaign. April 2014 and 2015: stratified water column, end of the rainy season. October 2014 and November 2015: non-stratified period, end of the dry season



## Composition and Structure of Phytoplanktonic Communities

### Taxonomic and Phylogenetic Affiliation of Phytoplanktonic OTUs

Using 16S rRNA genes amplicon, we obtained 455 16S rRNA-OTUs including bacteria, cyanobacteria, and eukaryotic plastids. The phytoplanktonic community was composed of 15 OTUs, with eight OTUs being affiliated to cyanobacteria and seven OTUs to eukaryotic plastids (Tables 1, S1, and S2).

Each cyanobacterial OTU was affiliated either to the genus or species level (Tables 1 and S1). The phylogeny of cyanobacteria (Fig. S1) showed that the eight observed OTUs belonged to the orders Oscillatoriales (*A. fusiformis*), Synechococcales (Family Synechococcaceae: *Synechococcus*, Family Leptolyngbyaceae: *Sodalinema komarekii* and *Leptolyngbya* spp. 1 to 4), and Pleurocapsales (*Xenococcus* sp.). Among these eight OTUs, two species (*A. fusiformis* and *S. komarekii*) have been already described in the isolated strains from Lake Dziani Dzaha by a polyphasic approach [18].

The seven eukaryotic plastid-related OTUs (Table S2) were distributed to three phyla (Fig. S2): (i) Ochrophyta, including three OTUs affiliated to the Cymbellaceae and Cymbellales (sp. 1 to 3), but the bootstrap scores did not support the inclusion of these OTUs to any genus or species and two OTUs to the Naviculaceae (sp.) and Naviculales (*Gyrosigma* sp.), (ii) Myzozoa, with one OTU closely related to *Kryptoperidinium foliaceum* within the order Peridinales, and (iii) Chlorophyta, with one OTU affiliated to *P. salinarum* that forms a separate phylogenetic lineage within Prasinophyceae [14, 50].

### Contribution of Cyanobacteria and Photosynthetic Eukaryotes to the Diversity of 16S rRNA Genes

Although the phytoplanktonic community represented only 3.3% of the total observed richness (15 OTUs among the 455 OTUs in the total dataset, data not shown), it nonetheless represented 52% of the total number of sequences (18,747,809 sequences). *A. fusiformis* (8,249,182 sequences) and *P. salinarum* (1,480,251 sequences) were the two most abundant taxa of the planktonic community in Lake Dziani Dzaha. Among the photosynthetic microorganisms, *A. fusiformis* and *P. salinarum* were, by far, the only dominant microorganisms, representing 99.99% of the total number of cyanobacterial and photosynthetic eukaryote sequences, respectively (Table 1). Photographs of these two dominant OTU representatives are presented in Fig. S3.

## Changes in the Abundance of the Dominant Phytoplanktonic Taxa along the Water Column

The over-dominance of only two phytoplanktonic, *P. salinarum* and *A. fusiformis*, provided an opportunity to easily and accurately estimate their abundance by microscopy and flow cytometry, respectively. The observed mean abundances were high, with  $1.44 \times 10^6$  and  $7.78 \times 10^5$  cells mL<sup>-1</sup> for *A. fusiformis* and *P. salinarum*, respectively (Table 2). Taking into account all the samples, the standardized number of sequences of these two taxa were significantly related to their abundance values estimated using FCM (Fig. S4). The relationship was linear for *Picocystis* but asymptotic for *Arthrospira*, probably as a consequence of the finite standardized number of analyzed sequences versus theoretically limitless number of cells counted using FCM.

The maximum values were recorded in the upper euphotic layer (Fig. 3; *P. salinarum*:  $2.67 \times 10^6$  cells mL<sup>-1</sup>, April 2014; *A. fusiformis*:  $4.66 \times 10^6$  cells mL<sup>-1</sup>, October 2014).

Large variations in the abundance of species were observed with depth (Fig. 3), with both the taxa exhibiting a decreasing trend with depth (Spearman rho = -0.554,  $P < 10^{-3}$  for *A. fusiformis* and -0.665,  $P < 10^{-4}$  for *P. salinarum*). However, we observed differences in these trends according to the stratification state of the water column (Fig. 3). During the stratified period (April 2014 and 2015), the abundance of both taxa showed a quasi-exponential decrease below the thin euphotic layer. During the non-stratified period (October 2014 and November 2015), small variations in the abundance of the two taxa were observed, notably between the surface and 14–16 m bottom layers, where the physico-chemical characteristics of the water column were homogeneous. Below this limit, the abundance of both the species exhibited a significant decrease. The relative decrease in taxa abundance between the top and bottom layers of the water column was very high and constant for *A. fusiformis* (93%–97%) and highly variable for *P. salinarum* (73%–99%). The lowest decrease in the abundance of *P. salinarum* was observed during the non-stratified period (78% in October 2014 and 73% in November 2015).

### Relationships between the Abundance of the Dominant Photosynthetic Taxa and Physico-Chemical Characteristics of the Water Column

The results of the PLS regression models are provided in Table 3. The  $R^2$  associated with different models were very high, with higher values for *P. salinarum* than for *A. fusiformis* model. Among the four tested explanatory variables, temperature was the only variable that positively affected the abundance of *P. salinarum* and *A. fusiformis*, and showed relatively low standardized regression coefficient. The three other variables (salinity, log H<sub>2</sub>S, and log NH<sub>4</sub><sup>+</sup>) negatively correlated

**Table 1** Affiliation of cyanobacterial taxa and photosynthetic eukaryotes OTUs ranked in decreasing order sequence numbers. Their relative abundance (%) in the total phytoplanktonic community, either cyanobacteria or photosynthetic eukaryotes communities, were also reported

Taxa	Number of sequences	Proportion that form the sequences of each phytoplanktonic taxa in different communities		
		Phytoplankton (%)	Cyanobacteria (%)	Eukaryotic phytoplankton (%)
<i>Arthrospira fusiformis</i>	8,249,182	84.78	99.99	—
<i>Sodalinema komarekii</i>	99	$1.02 \cdot 10^{-3}$	$1.20 \cdot 10^{-3}$	—
<i>Leptolyngbya</i> sp. 1	66	$6.78 \cdot 10^{-4}$	$8.00 \cdot 10^{-4}$	—
<i>Synechococcus</i> sp.	50	$5.14 \cdot 10^{-4}$	$6.06 \cdot 10^{-4}$	—
<i>Leptolyngbya</i> sp. 2	31	$3.19 \cdot 10^{-4}$	$3.76 \cdot 10^{-4}$	—
<i>Xenococcus</i> sp.	9	$9.25 \cdot 10^{-5}$	$1.09 \cdot 10^{-4}$	—
<i>Leptolyngbya</i> sp. 3	2	$2.06 \cdot 10^{-5}$	$2.42 \cdot 10^{-5}$	—
<i>Leptolyngbya</i> sp. 4	1	$1.03 \cdot 10^{-5}$	$1.21 \cdot 10^{-5}$	—
Σ cyanobacteria	8,249,440	84.78	—	—
<i>Picocystis salinarum</i>	1,480,251	15.21	—	99.99
<i>Kryptoperidinium</i> sp.	100	$1.03 \cdot 10^{-3}$	—	$6.76 \cdot 10^{-3}$
<i>Cymbellales</i> sp. 1	9	$9.25 \cdot 10^{-5}$	—	$6.08 \cdot 10^{-4}$
<i>Cymbellales</i> sp. 2	7	$7.19 \cdot 10^{-5}$	—	$4.73 \cdot 10^{-4}$
<i>Cymbellales</i> sp. 3	3	$3.08 \cdot 10^{-5}$	—	$2.03 \cdot 10^{-4}$
<i>Naviculaceae</i> sp.	2	$2.06 \cdot 10^{-5}$	—	$1.35 \cdot 10^{-4}$
<i>Gyrosigma</i> sp.	1	$1.03 \cdot 10^{-5}$	—	$6.76 \cdot 10^{-5}$
Σ eukaryotic phytoplankton	1,480,373	15.21	—	—
Total	9,729,813			

with phytoplankton abundance. During the stratified and the non-stratified seasons, the explanatory variable with the highest coefficient value was salinity for *P. salinarum*, whereas, it was log H<sub>2</sub>S for *A. fusiformis*.

### Pigment Composition of *P. salinarum* and *A. fusiformis* Isolated Strains

The results of the analysis of different pigment classes of the strains *P. salinarum* and *A. fusiformis* are presented in Table 4. *Picocystis salinarum* cells exhibited a higher diversity in their pigment composition than *A. fusiformis* (nine and five, respectively). Among the accessory pigments, specific carotenoids were exclusively detected in *P. salinarum* (neoxanthin, violaxanthin, antheraxanthin, and two unknown lipophilic pigments). Specific pigments also existed in *A. fusiformis* cells, including phycocyanin and two lipophilic pigments (zeaxanthin and an unknown pigment). Expressed as the amount

of pigment by cellular volume unit, *P. salinarum* cells presented higher concentrations of both Chl *a* and *b* ( $51.9 \pm 12.8$  and  $21.1 \pm 5.8$  fg  $\mu\text{m}^{-3}$ , respectively) than those of *A. fusiformis* ( $6.0 \pm 4.9$  and  $0$  fg  $\mu\text{m}^{-3}$ , respectively). On the contrary and as expected, *A. fusiformis* had a high content of phycocyanin ( $51.1 \pm 51.8$  fg  $\mu\text{m}^{-3}$ ), which *P. salinarum* does not have.

## Discussion

### Drastic Environmental Changes in the Lake Dziani Dzaha Pelagic Ecosystem

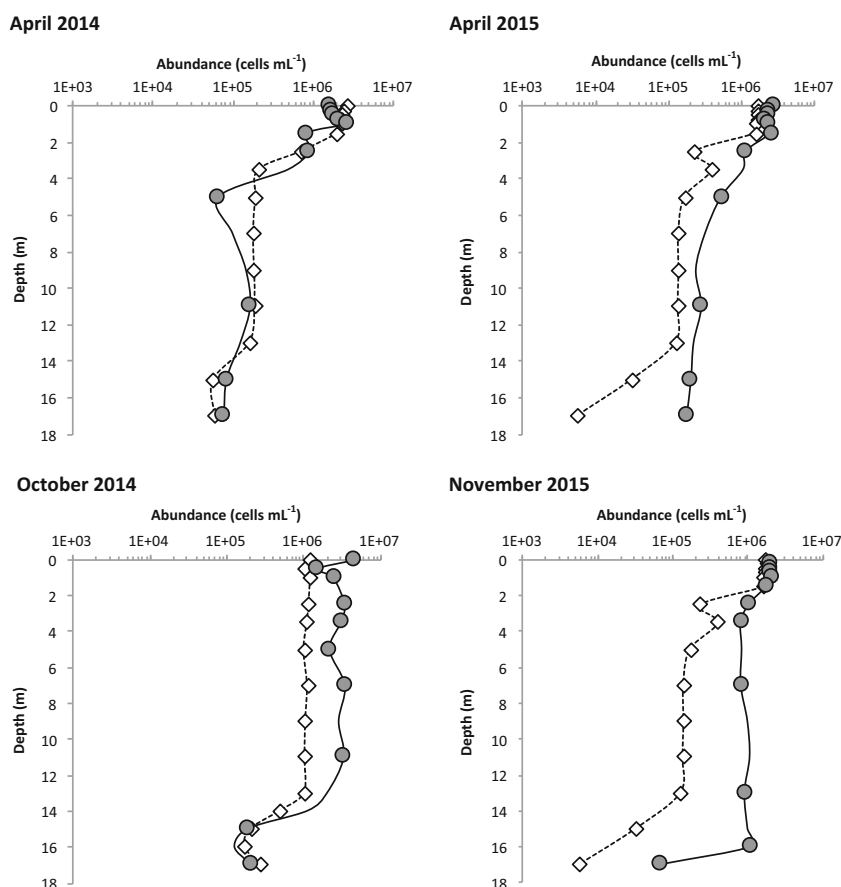
Lake Dziani Dzaha is a tropical thalassohaline crater lake, with unique specific physico-chemical characteristics. The water of the Dziani Dzaha Lake probably originates from the nearby Indian Ocean with further modifications of its physico-chemical characteristics by precipitations, hydrothermal

**Table 2** Mean and dispersion statistics of the abundances (cells mL<sup>-1</sup>) estimated using flow cytometry for *P. salinarum* and microscopy for *A. fusiformis*

Taxa	Number	Mean	Min	Max	SD	CV (%)
<i>P. salinarum</i>	52	$7.78 \cdot 10^5$	$3.15 \cdot 10^4$	$2.67 \cdot 10^6$	$6.67 \cdot 10^5$	85.7
<i>A. fusiformis</i>	42	$1.44 \cdot 10^6$	$6.48 \cdot 10^4$	$4.66 \cdot 10^6$	$1.05 \cdot 10^6$	73.1



**Fig. 3** Changes in the abundance of *Picocystis salinarum* (open squares) and *Arthrospira fusiformis* (gray circles) as a function of depth during the four sampling campaigns. The abundance of *P. salinarum* and *A. fusiformis* was estimated by flow cytometry and microscopy, respectively



activity, precipitation of dissolved elements, and biogeochemical activity. This marine origin is original compared with that of most known other alkaline and saline lakes that are, for the great majority, inland water bodies whose salinity is due to dissolved continental minerals [1].

The hydrological characteristics of Lake Dziani Dzaha are mostly dependent on the seasonal climatology, which is based on alternating dry and rainy seasons. Low surface salinity and a halocline at a depth of 2.2 m can be attributed to the heavy rainfalls occurring during the rainy season in Mayotte Islands. During dry season, evaporation progressively increased the salinity of the surface layer, easing the mixing of water column and disappearance of the halocline. Therefore, the lake can be considered a monomictic lake (mixing once a year during the southern hemisphere winter) with special features in terms of oxygen content, i.e., permanent anoxia at a depth of approximately 2 m even in the absence of halocline. In summary, the water column in the deepest part of the lake undergoes important changes in its physicochemical characteristics, thus, defining several layers along the water column during both the seasons. These contrast layers, based on the physicochemical characteristics, were observed between seasons from 2010 to 2015 [1] and this study. They define several environmental niches, which might have strong effects on phytoplanktonic diversity and distribution, along the water column.

The estimated phytoplanktonic biomass, expressed as mean chlorophyll *a* concentrations, was very high in 2014 ( $566 \mu\text{g Chla L}^{-1}$ ) and 2015 ( $692 \mu\text{g Chla L}^{-1}$ ), and in the same range than the ones already observed in 2010 ( $685 \mu\text{g Chla L}^{-1}$ ) and 2011 ( $702 \mu\text{g Chla L}^{-1}$ ) [1].

### Diversity and Composition of Phytoplanktonic Community

In the present study, the richness of phytoplanktonic community in the lake was low, with only 15 taxa being detected, eight of them belonging to cyanobacteria and seven to photosynthetic eukaryotes. To the best of our best knowledge, no study on the phytoplanktonic diversity of thalassohaline lake have been carried out with metabarcoding and metagenomic approaches. The richness of phytoplanktonic communities of soda lakes located in the Kenyan and Ethiopian Rift Valleys, which are the most studied aquatic continental ecosystems close to Lake Dziani Dzaha, have been mainly evaluated through microscopic identification [5, 51–53]. The few studies based on next-generation sequencing (NGS) on the microbial communities of these lakes have focused on prokaryotic communities [12, 54]. The only NGS-based study of both prokaryotic and eukaryotic organisms in several Ethiopian Lakes was by Lanzén et al. [22]. However, the number of

**Table 3** Results from partial least squares (PLS) regression performed between the abundances of *P. salinarum* and *A. fusiformis* and the tested environmental variables (T = temperature, S = salinity, H<sub>2</sub>S = H<sub>2</sub>S concentration, NH<sub>4</sub><sup>+</sup> = NH<sub>4</sub><sup>+</sup> concentration). n = number of data. R<sup>2</sup> = determination coefficient. Stratified period: April 2014 and 2015. Non-stratified period: October 2014 and November 2015

Taxa	Stratified period		Non-stratified period	
	<i>P. salinarum</i>	<i>A. fusiformis</i>	<i>P. salinarum</i>	<i>A. fusiformis</i>
n	30	30	29	29
R <sup>2</sup>	0.885	0.781	0.866	0.580
T	+0.213	+0.225	+0.138	+0.134
S	−0.336	−0.275	−0.324	−0.250
Log H <sub>2</sub> S	−0.314	−0.333	−0.317	−0.278
Log NH <sub>4</sub> <sup>+</sup>	−0.264	−0.245	−0.295	−0.227

phytoplanktonic taxa that can be retrieved from their database was considerably lower than that of other studies on the same lakes but based on microscopy [5, 55].

Considering the microscopy-based richness estimation of phytoplanktonic communities of Kenyan and Ethiopian lakes, which range between 72 (Koka Lake; [5]) and seven (Abijata Lake; [5]), the richness of phytoplanktonic community in Lake Dziani Dzaha was in the lower range and it is among the lowest recorded in the saline-alkaline lakes in this part of the world. Among the crater lakes located in the same geographical and climatic area, a single study in Lake Oloidien (Kenya) reported the characterization of phytoplanktonic communities using NGS [12]. These authors observed up to 30 cyanobacteria and more than 15 eukaryotic taxa. However, Lake Oloidien differs greatly from Lake Dziani Dzaha in

terms of salinity, which remains quite lower and more variable (< 4 ppt), the presence of zooplankton and the non-permanent flamingo populations, along with permanent human populations that rely on the lake water for different uses.

Among the 15 phytoplanktonic OTUs, the two significantly dominant ones were *A. fusiformis* and *P. salinarum*; both the species being commonly described as dominant phytoplanktonic taxa in equatorial soda lakes [54, 56–58]. Among the rare cyanobacteria OTUs, one corresponds to a new species (*S. komarekii*), which has been recently described in strains isolated from stromatolites, and it might be considered endemic to Lake Dziani Dzaha [18]. The other rare cyanobacterial OTUs (*Leptolyngbya* spp. 1–4, *Synechococcus* sp., and *Xenococcus* sp.) have also been reported with relatively high frequency in the stromatolites of the lake [26]. The fact that all these cyanobacterial species were detected with a very low frequency in the water column and a high frequency in stromatolites, implies that the preferential habitat of these species is probably the stromatolites, where Cyanobacteria have been shown to influence their shape and mineralogy [26].

With respect to the rare eukaryotic plastid-related OTUs, only *Kryptoperidinium* sp. was detected in stromatolites with a higher frequency than that in the water column [59]. Regarding Bacillariophyta, the assignation level of Cymbellaceae spp. clusters (Family) does not allow comparison with the composition of diatoms from other aquatic ecosystems. However, both Cymbellaceae species and *Gyrosigma* sp., affiliated with *Gyrosigma fasciola*, have already been observed in the Mozambique Channel [60]. *Gyrosigma* sp. has never been reported as a typical species of soda or thalassohaline lakes. Thus, it can be hypothesized that most of the rare eukaryotic species detected in Lake

**Table 4** Pigments composition and concentration (fg μm<sup>−3</sup>) of *Arthrospira fusiformis* (Cyanobacteria) and *Picocystis salinarum* (Chlorophyta) strains isolated from Lake Dziani Dzaha. The specific

absorption wavelengths (nm) was indicated for each pigment. ALCP = Algothèque Laboratoire Cryptogamie Paris. PMC = Paris Museum Collection, Museum National of Natural History

Pigments (fg μm <sup>−3</sup> )		Absorption (nm)	<i>P. salinarum</i> ALCP 144.1	<i>P. salinarum</i> ALCP 145.1	<i>P. salinarum</i> ALCP 146.1	<i>A. fusiformis</i> PMC 851.14	<i>A. fusiformis</i> PMC 894.15	<i>A. fusiformis</i> PMC 917.15
Carotenoids	Neoxanthin	438–466	3.0	2.1	1.7	0	0	0
	Violaxanthin	443	0.4	0.4	0	0	0	0
	Antheraxanthin	449–452	10.2	7.3	5.0	0	0	0
	Zeaxanthin	400–500	0	0	0	0.2	0.6	0.2
	Lutein	445–473	4.2	3.0	5.2	0	0	0
	β-Carotene	452	2.7	1.8	1.9	0.3	1.1	0.5
	Chlorophyll b	445, 645	27.5	19.5	16.2	0	0	0
Chlorophylls	Chlorophyll a	430, 660	66.5	46.0	43.1	2.7	11.6	3.7
	Phaeophytin a	666	0.3	0.2	0	0	0	0
Phycobiliprotein	Phycocyanin	500–650	0.0	0.0	0.0	24.4	110.8	18.1
Unknown	Unknown_x1		0.7	0.6	0.9	0	0	0
	Unknown-x2		1.6	1.2	3.8	0	0	0
	Unknown_x3		0	0	0	0.1	0.4	0.2

Dziani Dzaha are probably of marine origin. Finally, some common thalassohaline or soda lakes taxa (e.g., Chlorophyta such as *Kirchneriella*, *Monoraphidium*, *Raphidocelis*, *Selenastrum*, and *Tetranephris* [23] were not detected in Lake Dziani Dzaha.

Overall, these results support our initial hypothesis of very low taxonomic richness of phytoplanktonic community in the Lake Dziani Dzaha pelagic ecosystem. However, the two-dominant species (*A. fusiformis* and *P. salinarum*) were the same as those reported in most saline-alkaline lakes, whereas, the very rare OTUs observed in the water column appeared to originate either from stromatolites or surrounding marine environment. Different and complementary processes can explain the low richness. First, the geographical isolation of this insular crater lake from other alkaline-saline lakes avoids or significantly limits the movement of phytoplanktonic species, which might occur in continental lakes through dispersal agents (such as water, air, animal, and human) [61]. Second, the small size of the lake coupled with drastic environmental conditions in the water column limits the suitable niches for phytoplankton to the thin upper layer of the water column. Third, a main difference from other alkaline or thalassohaline lakes is the absence of grazers (zooplankton, fishes, and birds such as flamingos [62]). The absence of top-down control of phytoplanktonic populations might allow dominant species to establish and persist [63, 64]. Fourth, the large amount of phytoplanktonic biomass suggests that there is no nutrient limitation and implies a strong light attenuation, resulting in a competition for light among phytoplanktonic species leading to the dominance of the best competitors [65].

### Only One Prokaryotic and One Eukaryotic Taxa Dominated the Phytoplanktonic Community from the Surface to Bottom Layers of the Water Column

Considering that the above-mentioned processes can explain the observed very low diversity, both competitive exclusion [66] and killing the winner theories [24, 67] predict that only one species can dominate and exclude the others. However, in Lake Dziani Dzaha, we observed the co-dominance of two distinct species in the same environmental niche, which, to the best of our knowledge, has not been reported in saline-alkaline lakes.

A first explanation of this unexpected result might be that co-occurrence is possible because of the distinct capacities of the two taxa to cope with light-limitation (Tables 4 and S3). Light limitation mostly refers to the quantitative aspect, but light is not a single resource, such as nutrients (e.g.,  $\text{NH}_4^+$  and  $\text{PO}_4^{3-}$ ). Light is composed of different wavelengths, and photosynthetic organisms have developed adaptations to use

different regions of the photosynthetically active radiation (PAR) through a diverse range of pigments. Recently, Burson et al. [68] proposed an explanation for the unexpected co-occurrence of different phytoplanktonic species, where the best competitor for light is expected to dominate the phytoplanktonic community. In the two dominant taxa of Lake Dziani Dzaha, differences in their pigment composition were obvious (Table 4). For instance, if they share the ubiquitous Chla pigment with absorption peaks at 440 and 680 nm (blue and red regions of the spectrum), *P. salinarum* cells can exhibit higher concentration of Chla than *A. fusiformis*, given the potential better efficiency of *P. salinarum* to capture energy associated with Chla absorption wavelengths. The cyanobacteria *A. fusiformis* contains the accessory pigment phycocyanin, which has an absorption peak at 630 nm (orange region), whereas, *P. salinarum* contains Chlb with an absorption peak at 475 (blue-green region) and 650 nm (red region). Furthermore, *P. salinarum* also contains several other pigments, including diatoxanthin (451 and 479 nm) and monadoxanthin (448 and 475 nm), which enables them to efficiently use the blue-green part of the light spectrum.

A second explanation of the non-competitive access to light resources by these two taxa in the thin surface layer of the water column might be the significant difference in their size. To prevent sinking, the large filaments of *A. fusiformis* benefit from intracellular aerotopes, which regulate their buoyancy [69]. Due to their very small size, *P. salinarum* cells have a very low intrinsic sinking rate [70] that can be lowered by the viscosity of lake water where salinity is higher than that of seawater. Thus, these two taxa exhibited distinct but non-competitive approach to remain in the upper part of the euphotic layer, where they attained the maximum abundance.

Coupled with the low sinking property they confer to the phytoplanktonic cells [71], high surface/volume ratio (Table S3 and Fig. S3), as in picophytoplanktonic cells, compared with that of nano- or microphytoplanktonic cells, has also been proposed as a way to cope with light limitation [72]. In the present study, these two co-dominant taxa were also observed and enumerated in all the samples by both microscopy and flow cytometry. The abundance of these two-species showed that they mostly co-occur and exhibit a significant decrease with depth, especially when the water column is stratified. However, if we hypothesize that most, if not all, the cells of both taxa were produced in the top layer of the lake and then sank, it is remarkable that during non-stratified periods, approximately 25% of *Picocystis* cells were able to survive in the extreme hostile physico-chemical environments that prevail in the bottom layers of the water column. Contrarily, and irrespective of the water column structure, only a small percent of abundance of *Arthrospira* cells in the top layer was observed in these bottom layers. To the best of our knowledge, such differential behavior has not been reported by the studies on soda lakes (Table S3).

## Factors Regulating the Dynamics of the Two Dominant Phytoplanktonic Taxa

As mentioned previously, it is probable that high PAR in the upper layer allowed active growth of the two photosynthetic taxa, but they also seem to maintain minimum growth when the PAR decreased. The ability to grow in low-light environments has been demonstrated for *P. salinarum*, with a positive growth at very low irradiance ( $0.6 \mu\text{M photons m}^{-2} \text{ s}^{-1}$ ), showing its high potential for photoacclimation and shade-adapted photosynthesis [73]. The high Chl *a* pigment concentration, as observed in the isolated strains of the present study, might also help this species to optimize its ability to cope with very low light intensity [74]. Similarly, specific adaptive mechanisms to very low irradiance have been developed by *Arthrospira*, which can increase the cellular pigment concentrations [75].

From the upper layer to the bottom of the water column, the results of statistical modeling showed that the abundance of the two over-dominant taxa were significantly correlated with all the tested environmental factors. The abundance of *P. salinarum* and *A. fusiformis* positively correlated with the temperature. Temperatures of near or over  $30^\circ\text{C}$  has been shown to potentially favor the growth of the two taxa [73–76]. The negative relationships between the abundance of the two taxa versus salinity,  $\text{H}_2\text{S}$ , and  $\text{NH}_4^+$  indicated that below the upper layer, they were both subjected to adverse conditions.

The negative relationship with  $\text{H}_2\text{S}$  can result from the effect of anoxic conditions and/or the direct toxic effect of  $\text{H}_2\text{S}$ . These two taxa might have different ways to cope with high levels of  $\text{H}_2\text{S}$ , but the underlying mechanisms remain to be elucidated.

Growth and photosynthetic activity of *P. salinarum* strains were observed under anoxic conditions and after treatment with  $100 \mu\text{M Na}_2\text{S}$  with comparable rates than those measured under oxic conditions [73]. The results suggested that the ability to maintain oxygenic photosynthesis even under low light condition might allow the proximal environment of *P. salinarum* cells to be suboxic, thus, reducing the redox stress. However, below the surface layer of the lake, no light was available for photosynthesis and during the stratified season the  $\text{H}_2\text{S}$  concentration was significantly above  $1000 \mu\text{M}$ . The significant abundance of *P. salinarum* in the bottom layers of the lake suggests that they are highly efficient, but unknown processes must operate to maintain the cell integrity.

Different types of adaptations to  $\text{H}_2\text{S}$  have been defined among cyanobacteria based on the differential sensitivity of photosystems II and I to sulfide, and the capacity to carry out anoxygenic photosynthesis [76, 77]. However, the described processes can only function if a minimum intensity of light is available [78]. In dark and in anoxic conditions, cyanobacteria have the capacity to perform fermentative metabolism coupled with sulfur reduction [79]. Dark and anaerobic conditions have been shown to enhance the survival of

*Oscillatoria terebreformis* compared with that under aerobic conditions [74].

The negative relationships between the abundance of the two taxa and  $\text{NH}_4^+$  content probably originated from the significant increase in its concentration in the bottom waters. The observed values were among the highest recorded in aquatic ecosystems [80], and therefore, might be toxic or sub-toxic for both the taxa. Additionally, under high temperature and pH conditions observed in the lake, the ratio between toxic free ammonia ( $\text{NH}_3$ ) versus ammonium ( $\text{NH}_4^+$ ) might increase, further affecting cell growth and viability [81].

Salinity has also been reported by the model as a significant explanatory variable with a potential negative effect on the abundance of *Picocystis* and *Arthrospira*. The regression coefficients were relatively high for *Picocystis*, suggesting the higher sensitivity of *Picocystis* to salinity variations in the water column. However, the field observations of different studies suggest that *P. salinarum* is more tolerant to high salinity values ( $10\text{--}300 \text{ psu}$ ) than *A. fusiformis* ( $20\text{--}70 \text{ psu}$ ) [53]. In a laboratory experiment, Kebede [82] studied the growth of *A. fusiformis* strains subjected to a wide range of salinity and different salt compositions. They found an inverse relationship between salinity and growth, although the growth rate was still positive at a salinity of  $90 \text{ psu}$  (Table S3).

The apparent high sensitivity of *P. salinarum* to salinity in Lake Dziani Dzaha might be attributed to the conjunction of several adverse conditions that probably did not co-exist in the other ecosystems, where this species has been observed, and that have not been experimentally tested simultaneously.

Considering the above results, we can hypothesize that the co-existence of these two taxa in the same environmental niche is based on different adaptive features they might have to cope with light-limitation and adverse environmental conditions. To the best of our knowledge, this is the first in situ example of the role that niche differentiation in the light spectrum can play to complete the “nutrient-load hypothesis” [68]. However, one can ask why the coexistence of these two taxa was not reported in other saline-alkaline lakes, with the exception of one crater lake investigated by Krienitz et al. [14]. These authors provided the most probable explanation for the few reports of *Picocystis* as a co-occurrent species of cyanobacteria, writing that “This tiny protist is difficult to recognize and distinguish in field samples and is probably often neglected or wrongly identified.” During this study, we had the opportunity to use flow cytometry, which is currently the most efficient tool to enumerate picophytoplanktonic cells [83] and we also benefited from *P. salinarum* isolates to calibrate FCM analyses.

Regarding the ecological consequences of this co-existence, the two species might sustain two different trophic networks owing to their different morphological traits. The small size of *P. salinarum* might support a microbial loop [84] in the surface layer of the lake. Not only bacteria but also protozoans



that have been detected in the lake [59] might benefit from the presence of these small phytoplanktonic cells either as a source of organic matter for aerobic heterotrophic bacteria or as a prey for nanoflagellates or protozoa. In contrast, due to their large size *A. fusiformis* filaments cannot be ingested by protozoans. By sedimentation, these filamentous organisms might act as a biological CO<sub>2</sub> pump [85] and as the main source of (i) organic matter in the detrital bacterial loop of the anoxic bottom layer of the lake and (ii) long-term carbon stock stored in the sediment of the lake.

The presence of intact *A. fusiformis* and *P. salinarum* cells in the deepest layers of the lake, although representing only a small fraction of the abundance observed in the upper layer, implies that a part of the population of these two phylogenetically and morphologically distinct taxa was able to persist in extremely adverse conditions (anoxia, high H<sub>2</sub>S and NH<sub>4</sub><sup>+</sup> concentration, and no light). It is probable that the physiological status of the upper- and lower-layer cells is different. In the future, the survival behavior and physiological status of cells from isolated strains of these two taxa under controlled conditions should be evaluated. Furthermore, the transcriptome and metabolome of the two taxa along the depth profile should also be analyzed in order to understand the changes in certain metabolic pathways as a response to such extreme environmental conditions.

In conclusion, due to its geographical isolation, low anthropogenic pressure, thalassohaline signature associated with extreme physico-chemical conditions with a thin euphotic layer, and absence of grazers, Lake Dziani Dzaha is an excellent model to study the composition and functioning of a “simple” microbial aquatic ecosystem. By analyzing the phytoplanktonic community of this lake through high-depth sequencing approach, we verified the hypothesis that this community exhibits a very low richness and diversity like in other isolated and extreme aquatic ecosystems. Two OTUs (*A. fusiformis* and *P. salinarum*) appeared as the sole true pelagic phytoplanktonic OTUs in this lake. Furthermore, they not only appeared to form the minimal community that can be encountered in a present or “primitive” aquatic ecosystem, but also co-existed as a stable co-dominant consortium, at least according to the data collected during our four campaigns. Our findings are different from what is proposed by the classical community ecology hypotheses, according to which, in Lake Dziani Dzaha, only one species should have dominated the ecosystem. The two phylogenetically distinct OTUs (Cyanobacteria and Chlorophyta) showed distinct functional traits (pigment composition and size) that can explain their co-existence in the euphotic layer. Because of adverse environmental conditions that prevail below the surface layer, both the taxa exhibited a significant decrease in their abundances. Their behavior in the aphotic and anoxic water layers should be explored, and it constitutes one of the interesting challenges for future studies.

**Acknowledgments** The authors highly thank M. Bouvy, P. Cadeau, and E. Fouilland for their support during prospecting campaigns on Lake Dziani Dzaha. They also thanks J. Ras from the SAPIGH analytical platform of the Laboratoire d’Océanographie de Villefranche (CNRS-France) for lipophilic pigments analysis. Field permit was granted by the Conservatoire du Littoral et des Rivages Lacustres, Antenne Océan Indien, since Lake Dziani Dzaha is currently a protected water body with free public access but restricted activities, under the control of the French agency for littoral ecosystems conservation (<http://www.conservatoire-du-littoral.fr/>). The authors thank the anonymous referees for providing valuable suggestions that significantly improved the quality of the manuscript. The authors also would like to thank Editage ([www.editage.com](http://www.editage.com)) for English language editing.

**Author Contributions** CB, HA, MH, DJ, CL, MA, and MT have worked on the design of the experiments. CB, NV, CD, CC, PG, GS, DJ, CL, MA, VG, and CB have performed the experiments. MH, EA, MT, and CB have performed the data analysis. CB, MT, MH, MA, and AE have written the paper.

**Funding** This work was supported by Agence Nationale de la Recherche (France, <http://www.agence-nationale-recherche.fr>, DZIANI project, grant no. ANR-13-BS06-0001), and Total Corporate Foundation (DZAHA project, grant no. C001493).

## Compliance with Ethical Standards

**Conflict of Interest** The authors declare that they have no competing interests.

**Open Access** This article is distributed under the terms of the Creative Commons Attribution 4.0 International License (<http://creativecommons.org/licenses/by/4.0/>), which permits unrestricted use, distribution, and reproduction in any medium, provided you give appropriate credit to the original author(s) and the source, provide a link to the Creative Commons license, and indicate if changes were made.

## References

1. Le Boulanger C, Agogué H, Bernard C, Bouvy M, Carré C, Cellamare M, Duval C, Fouilland E, Got P, Intertaglia L, Lavergne C, le Floch E, Roques C, Sarazin G (2017) Microbial diversity and cyanobacterial production in Dziani Dzaha crater lake, a unique tropical thalassohaline environment. *PLoS One* 12: 1–28. <https://doi.org/10.1371/journal.pone.0168879>
2. Cadeau P (2017) Caractérisation des cycles géochimiques dans un analogue potentiel des océans à 2.2 Ga : le lac Dziani Dzaha, Mayotte. <http://www.ipgp.fr/fr/gis/these-de-pierre-cadeau>. Accessed 7 Sep 2018
3. Fazi S, Butturini A, Tassi F, Amalfitano S, Venturi S, Vazquez E, Clók M, Wanjala SW, Pacini N, Harper DM (2018) Biogeochemistry and biodiversity in a network of saline-alkaline lakes: implications of ecohydrological connectivity in the Kenyan Rift Valley. *Ecohydrol. Hydrobiol.* 18:96–106. <https://doi.org/10.1016/j.ecohyd.2017.09.003>
4. Wood, R. & Talling, J. (1988). Chemical and algal relationships in a salinity-series of Ethiopian inland waters. *Hydrobiologia* 15: 29–67. In: Chem. algal relationships a Salin. Ethiop. Inl. waters. <http://www.sciepub.com/reference/79101>. Accessed 23 Nov 2018



5. Kebede E, Willén K Phytoplankton in a salinity–alkalinity series of lakes in the Ethiopian Rift Valley *Algal Stud*, 89 (1998), pp. 63–96
6. Abate R, Kifle D, Lemma B, Gao Y (2014) Phytoplankton community and physico-chemical seasonality and changes in Lake Hora-Kilole, Ethiopia, a tropical crater lake. *African J Aquat Sci* 39:97–108. <https://doi.org/10.2989/16085914.2013.867253>
7. Lemma B (2003) LIMNOLOGICA ecological changes in two Ethiopian lakes caused by contrasting human intervention
8. Melack JM (1979) Photosynthesis and growth of *Spirulina platensis* (Cyanophyta) in an equatorial lake (Lake Simbi, Kenya)1. *Limnol. Oceanogr.* 24:753–760. <https://doi.org/10.4319/lo.1979.24.4.0753>
9. Finlay BJ, Curds CR, Bamforth SS, Bafort JM (1987) Ciliated protozoa and other microorganisms from two African Soda Lakes (Lake Nakuru and Lake Simbi, Kenya). *Arch. Protistenkd.* 133:81–91. [https://doi.org/10.1016/S0003-9365\(87\)80041-6](https://doi.org/10.1016/S0003-9365(87)80041-6)
10. Njuguna SG (1988) Nutrient-phytoplankton relationships in a tropical meromictic soda lake. *Saline Lakes*. Springer, Dordrecht, pp 15–28
11. Ballot A, Krienitz L, Kotut K, Wiegand C, Pflugmacher S (2005) Cyanobacteria and cyanobacterial toxins in the alkaline crater lakes Sonachi and Simbi, Kenya. *Harmful Algae* 4:139–150. <https://doi.org/10.1016/J.HAL.2004.01.001>
12. Luo W, Li H, Kotut K, Krienitz L (2017) Molecular diversity of plankton in a tropical crater lake switching from hyposaline to subsaline conditions: lake Oloidien, Kenya. *Hydrobiologia* 788: 205–229. <https://doi.org/10.1007/s10750-016-2998-x>
13. Rumes B, Eggermont H, Verschuren D (2011) Distribution and faunal richness of Cladocera in western Uganda crater lakes. *Hydrobiologia* 676:39–56. <https://doi.org/10.1007/s10750-011-0829-7>
14. Krienitz L, Bock C, Kotut K, Luo W (2012) Picocystis salinarum (Chlorophyta) in saline lakes and hot springs of East Africa. *Phycologia* 51:22–32. <https://doi.org/10.2216/11-28.1>
15. Nkambo M, Bugenyi FW, Naluwayiro J, et al (2015) Planktonic and fisheries biodiversity of alkaline saline crater lakes of Western Uganda
16. Oberholster PJ, Botha A-M, Ashton PJ (2009) Appearance of new taxa: invertebrates, phytoplankton and bacteria in an alkaline, saline, meteorite crater lake, South Africa. *Fundam Appl Limnol / Arch für Hydrobiol* 174:271–282. <https://doi.org/10.1127/1863-9135/2009/0174-0271>
17. Mathelin E (2013) Les lacs insulaires du sud-ouest de l’océan indien, un enjeu pour la gestion durable de la ressource en eau. Université d’Orléans, Dissertation
18. Cellamare M, Duval C, Drelin Y, Djediat C, Touibi N, Agogué H, Leboulanger C, Ader M, Bernard C (2018) Characterization of phototrophic microorganisms and description of new cyanobacteria isolated from the saline-alkaline crater-lake Dziani Dzaha (Mayotte, Indian Ocean). *FEMS Microbiol. Ecol.* 94. <https://doi.org/10.1093/femsec/fty108>
19. Eiler A, Drakare S, Bertilsson S, Pernthaler J, Peura S, Rofner C, Simek K, Yang Y, Znachor P, Lindström ES (2013) Unveiling distribution patterns of freshwater phytoplankton by a next generation sequencing based approach. *PLoS One* 8:1–10. <https://doi.org/10.1371/journal.pone.0053516>
20. Xiao X, Sogge H, Lagesen K, Tooming-Klunderud A, Jakobsen KS, Rohrlack T (2014) Use of high throughput sequencing and light microscopy show contrasting results in a study of phytoplankton occurrence in a freshwater environment. *PLoS One* 9:e106510. <https://doi.org/10.1371/journal.pone.0106510>
21. Johnson ZI, Martiny AC (2015) Techniques for quantifying phytoplankton biodiversity. *Annu. Rev. Mar. Sci.* 7:299–324. <https://doi.org/10.1146/annurev-marine-010814-015902>
22. Lanzén A, Simachew A, Gessesse A, Chmolewska D, Jonassen I, Øvreås L (2013) Surprising prokaryotic and eukaryotic diversity, community structure and biogeography of Ethiopian Soda Lakes. *PLoS One* 8:e72577. <https://doi.org/10.1371/journal.pone.0072577>
23. Luo W, Kotut K, Krienitz L (2013) Hidden diversity of eukaryotic plankton in the soda lake Nakuru, Kenya, during a phase of low salinity revealed by a SSU rRNA gene clone library. *Hydrobiologia* 702:95–103. <https://doi.org/10.1007/s10750-012-1310-y>
24. Thingstad TF, Lignell R (1997) Theoretical models for the control of bacterial growth rate, abundance, diversity and carbon demand. *Aquat. Microb. Ecol.* 13:19–27. <https://doi.org/10.3354/ame013019>
25. Tilman D, Kilham SS, Kilham P (1982) Phytoplankton community ecology: the role of limiting nutrients. *Annu. Rev. Ecol. Syst.* 13: 349–372
26. Gérard E, De Goeyse S, Hugoni M et al (2018) Key role of Alphaproteobacteria and Cyanobacteria in the formation of stromatolites of Lake Dziani Dzaha (Mayotte, Western Indian Ocean). *Front. Microbiol.* 9. <https://doi.org/10.3389/fmicb.2018.00796>
27. Gran G, Dahlenborg H, Laurell S, Rottenberg M (1950) Determination of the equivalent point in potentiometric titrations. *Acta Chem. Scand.* 4:559–577. <https://doi.org/10.3891/acta.chem.scand.04-0559>
28. Ritchie RJ (2006) Consistent sets of spectrophotometric chlorophyll equations for acetone, methanol and ethanol solvents. *Photosyn Res* 89:27–41. <https://doi.org/10.1007/s11220-006-9065-9>
29. Bouvy M, Got P, Domaizon I, Pagano M, Leboulanger C, Bouvier C, Carré C, Roques C, Dupuy C (2016) Plankton communities in the five Iles Eparses (Western Indian Ocean) considered to be pristine ecosystems. *Acta Oecol.* 72:9–20. <https://doi.org/10.1016/j.actao.2015.10.013>
30. Catherine A, Selma M, Mouillot D, Troussellier M, Bernard C (2016) Patterns and multi-scale drivers of phytoplankton species richness in temperate peri-urban lakes. *Sci. Total Environ.* 559: 74–83. <https://doi.org/10.1016/j.scitotenv.2016.03.179>
31. Rippka R (1988) Isolation and purification of cyanobacteria. *Meth Enzym* 167:3–27
32. Catherine A, Maloufi S, Congestri R, Viaggiu E, Pilkaityte R (2017) Cyanobacterial samples: preservation, enumeration, and biovolume measurements. In: Meriluoto J, Spoof L, Codd G (eds) *Handbook of cyanobacterial monitoring and cyanotoxin analysis*, edition : 1<sup>st</sup>. Wiley, Editors, pp 333–334
33. Yéprémian C, Catherine A, Congestri R, Bernard C, Elsersek T, Pilkaityte R (2017) Chlorophyll a extraction and determination. In: Meriluoto J, Spoof L, Codd G (eds) *Handbook of cyanobacterial monitoring and cyanotoxin analysis*, edition: 1<sup>st</sup>. Wiley, Editors, pp 315–330
34. Ras J, Claustre H, Uitz J (2007) Spatial variability of phytoplankton pigment distributions in the subtropical South Pacific Ocean: comparison between in situ and predicted data. *Biogeosci. Discuss.* 4: 3409–3451. <https://doi.org/10.5194/bgd-4-3409-2007>
35. Sun J, Liu D (2003) Geometric models for calculating cell biovolume and surface area for phytoplankton. *J. Plankton Res.* 25:1331–1346. <https://doi.org/10.1093/plankt/fbg096>
36. Schuurman T, de Boer RF, Kooistra-Smid AMD, van Zwet AA (2004) Prospective study of use of PCR amplification and sequencing of 16S ribosomal DNA from cerebrospinal fluid for diagnosis of bacterial meningitis in a clinical setting. *J. Clin. Microbiol.* 42:734–740. <https://doi.org/10.1128/JCM.42.2.734-740.2004>
37. Walters W, Hyde ER, Berg-Lyons D, Ackermann G, Humphrey G, Parada A, Gilbert JA, Jansson JK, Caporaso JG, Fuhrman JA, Apprill A, Knight R (2016) Improved bacterial 16S rRNA gene (V4 and V4-5) and fungal internal transcribed spacer marker gene primers for microbial community surveys. *mSystems* 1:e00009-15. 10.1128/mSystems.00009-15, 1

38. Magoč T, Salzberg SL (2011) FLASH: fast length adjustment of short reads to improve genome assemblies. *Bioinformatics* 27: 2957–2963. <https://doi.org/10.1093/bioinformatics/btr507>
39. Mahé F, Rognes T, Quince C, de Vargas C, Dunthorn M (2014) Swarm: robust and fast clustering method for amplicon-based studies. *PeerJ* 2:e593. <https://doi.org/10.7717/peerj.593>
40. Rognes T, Flouri T, Nichols B, Quince C, Mahé F (2016) VSEARCH: a versatile open source tool for metagenomics. *PeerJ* 4:e2584. <https://doi.org/10.7717/peerj.2584>
41. Bokulich NA, Subramanian S, Faith JJ, Gevers D, Gordon JJ, Knight R, Mills DA, Caporaso JG (2013) Quality-filtering vastly improves diversity estimates from Illumina amplicon sequencing. *Nat. Methods* 10:57–59. <https://doi.org/10.1038/nmeth.2276>
42. Wang Q, Garrity GM, Tiedje JM, Cole JR (2007) Naive Bayesian classifier for rapid assignment of rRNA sequences into the new bacterial taxonomy. *Appl. Environ. Microbiol.* 73:5261–5267. <https://doi.org/10.1128/AEM.00062-07>
43. Camacho C, Coulouris G, Avagyan V, Ma N, Papadopoulos J, Bealer K, Madden TL (2009) BLAST+: architecture and applications. *BMC Bioinformatics* 10:421. <https://doi.org/10.1186/1471-2105-10-421>
44. Pruesse E, Quast C, Knittel K, Fuchs BM, Ludwig W, Peplies J, Glockner FO (2007) SILVA: a comprehensive online resource for quality checked and aligned ribosomal RNA sequence data compatible with ARB. *Nucleic Acids Res.* 35:7188–7196. <https://doi.org/10.1093/nar/gkm864>
45. Escudié F, Auer L, Bernard M, Mariadassou M, Cauquil L, Vidal K, Maman S, Hernandez-Raquet G, Combes S, Pascal G (2017) FROGS: find, rapidly, OTUs with galaxy solution. *Bioinformatics* 34:1287–1294. <https://doi.org/10.1093/bioinformatics/btx791>
46. Decelle J, Romac S, Stern RF, Bendif EM, Zingone A, Audic S, Guiry MD, Guillou L, Tessier D, le Gall F, Gourvil P, Dos Santos AL, Probert I, Vaulot D, de Vargas C, Christen R (2015) PhytoREF: a reference database of the plastidial 16S rRNA gene of photosynthetic eukaryotes with curated taxonomy. *Mol. Ecol. Resour.* 15: 1435–1445. <https://doi.org/10.1111/1755-0998.12401>
47. Kirchberger PC, Sefc KM, Sturmbauer C, Kobl Müller S (2014) Outgroup effects on root position and tree topology in the AFLP phylogeny of a rapidly radiating lineage of cichlid fish. *Mol. Phylogenet. Evol.* 70:57–62. <https://doi.org/10.1016/j.ympev.2013.09.005>
48. Tenenhaus M (1998) La régression PLS: théorie et pratique. **Editions TECHNIP**
49. Wold S, Ruhe A, Wold H, Dunn WI (1984) The collinearity problem in linear regression. The partial least squares (PLS) approach to generalized inverses. *SIAM J. Sci. Stat. Comput.* 5:735–743. <https://doi.org/10.1137/0905052>
50. Guillou L, Eikrem W, Chrétiennot-Dinet M, Le Gall F (2004) Diversity of picoplanktonic prasinophytes assessed by direct nuclear SSU rDNA. *Protist* 155:193–214
51. Schagerl M, Oduor SO (2003) On the limnology of Lake Baringo (Kenya): II. Pelagic primary production and algal composition of Lake Baringo, Kenya. *Hydrobiologia* 506–509:297–303
52. Schagerl M, Oduor SO (2008) Phytoplankton community relationship to environmental variables in three Kenyan Rift Valley saline-alkaline lakes. *Mar. Freshw. Res.* 59:125–136. <https://doi.org/10.1071/MF07095>
53. Schagerl M, Burian A, Gruber-Dorninger M, Oduor SO, Kagwa MN (2015) Algal communities of Kenyan soda lakes with a special focus on *Arthrospira fusiformis*. *Fottea* 15:245–257. <https://doi.org/10.5507/fot.2015.012>
54. Dadheech PK, Glöckner G, Casper P, Kotut K, Mazzoni CJ, Mbedi S, Krienitz L (2013) Cyanobacterial diversity in the hot spring, pelagic and benthic habitats of a tropical soda lake. *FEMS Microbiol. Ecol.* 85:389–401. <https://doi.org/10.1111/1574-6941.12128>
55. Ogato T, Kifle D (2017) Phytoplankton composition and biomass in tropical soda Lake Shala: seasonal changes in response to environmental drivers. <https://doi.org/10.1111/lre.12169>
56. Krienitz L, Dadheech PK, Kotut K (2013) Mass developments of the cyanobacteria *Anabaenopsis* and *Cyanospira* (Nostocales) in the soda lakes of Kenya: ecological and systematic implications. *Hydrobiologia* 703:79–93. <https://doi.org/10.1007/s10750-012-1346-z>
57. Sorokin DY, Berben T, Melton ED, Overmars L, Vavourakis CD, Muyzer G (2014) Microbial diversity and biogeochemical cycling in soda lakes. *Extremophiles* 18:791–809. <https://doi.org/10.1007/s00792-014-0670-9>
58. Kambura AK (2016) Metagenomic and metatranscriptomic analysis of bacterial, archaeal and fungal communities within the hot springs of lakes Magadi in Kenya (Biotechnology) University of Jomo Kenya
59. Hugoni M, Escalas A, Bernard C, et al (2018) Spatiotemporal variations in microbial diversity across the three domains of life in a tropical thalassohaline lake (Dziani Dzaha, Mayotte Island). 1–12. <https://doi.org/10.1111/mec.14901>
60. Sournia A (1968) A checklist of planktonic diatoms and dinoflagellates from the Mozambique channel. *Bull. Mar. Sci.* 20: 678–695
61. Padišák J, Vasas G, Borics G (2016) Phycogeography of freshwater phytoplankton: traditional knowledge and new molecular tools. *Hydrobiologia* 764:3–27
62. Schagerl M, Burian A (2016) The ecology of African Soda Lakes: driven by variable and extreme conditions
63. Pančić M, Kiørboe T (2018) Phytoplankton defence mechanisms: traits and trade-offs. *Biol. Rev.* 93:1269–1303
64. Leibold MA, Hall SR, Smith VH, Lytle DA (2017) Herbivory enhances the diversity of primary producers in pond ecosystems. *Ecology* 98:48–56. <https://doi.org/10.1002/ecy.1636>
65. Brauer VS, Stomp M, Huisman J (2012) The nutrient-load hypothesis: patterns of resource limitation and community structure driven by competition for nutrients and light. 179:721–740. <https://doi.org/10.1086/665650>
66. Tilman D (1977) Resource competition between plankton algae: an experimental and theoretical approach. *Ecology* 58:338–348. <https://doi.org/10.2307/1935608>
67. Thingstad TF (2000) Elements of a theory for the mechanisms controlling abundance, diversity, and biogeochemical role of lytic bacterial viruses in aquatic systems. *Limnol. Oceanogr.* 45:1320–1328. <https://doi.org/10.4319/lo.2000.45.6.1320>
68. Burson A, Stomp M, Greenwell E, Grosse J, Huisman J (2018) Competition for nutrients and light: testing advances in resource competition with a natural phytoplankton community. *Ecology* 0: 1–11. <https://doi.org/10.1002/ecy.2187>
69. Likens GE (2009) Biogeochemistry of inland waters: a derivative of encyclopedia of inland waters. Academic Press/Elsevier
70. Naselli-Flores L Fight on plankton! Or, phytoplankton shape and size as adaptive tools to get ahead in the struggle for life. *Cryptogam Algal*
71. Chindia JA, Figueredo CC (2018) Phytoplankton settling depends on cell morphological traits, but what is the best predictor? *Hydrobiologia* 813:51–61. <https://doi.org/10.1007/s10750-018-3505-3>
72. Kruk C, Martínez A, Nogueira L, et al (2014) Morphological traits variability reflects light limitation of phytoplankton production in a highly productive subtropical estuary (Río de la Plata, South America). <https://doi.org/10.1007/s00227-014-2568-6>
73. Roesler CS, Culbertson CW, Etheridge SM, Goericke R, Kiene RP, Miller LG, Oremland RS (2002) Distribution, production, and eco-physiology of *Picocystis* strain ML in Mono Lake, California. *Limnol. Oceanogr.* 47:440–452

74. Richardson LL, Castenholz RW (1987) Enhanced survival of the cyanobacterium *Oscillatoria terebriformis* in darkness under anaerobic conditions. *Appl. Environ. Microbiol.* 53:2151–2158
75. Schwaderer AS, Yoshiyama K, De Tezanos Pinto P et al (2011) Eco-evolutionary differences in light utilization traits and distributions of freshwater phytoplankton. *Limnol. Oceanogr.* 56:589–598. <https://doi.org/10.4319/lo.2011.56.2.0589>
76. Cohen Y, Jorgensen BB, Revsbech NP, Poplawski R (1986) Adaptation to hydrogen sulfide of oxygenic and anoxygenic photosynthesis among cyanobacteria. *Appl. Environ. Microbiol.* 51:398–407
77. Miller SR, Bebout BM (2004) Variation in sulfide tolerance of photosystem II in phylogenetically diverse cyanobacteria from sulfidic habitats. *Appl. Environ. Microbiol.* 70:736–744. <https://doi.org/10.1128/AEM.70.2.736-744.2004>
78. Castenholz RW, Utkilen HC (1984) Physiology of sulfide tolerance in a thermophilic *Oscillatoria*. *Arch. Microbiol.* 138:299–305. <https://doi.org/10.1007/BF00410894>
79. Stal LJ, Moezelaar R (1997) Fermentation in cyanobacteria. *FEMS Microbiol. Rev.* 21:179–211. <https://doi.org/10.1111/j.1574-6976.1997.tb00350.x>
80. Collos Y, Harrison PJ (2014) Acclimation and toxicity of high ammonium concentrations to unicellular algae. *Mar. Pollut. Bull.* 80:8–23. <https://doi.org/10.1016/j.marpolbul.2014.01.006>
81. Markou G, Depaetere O, Muylaert K (2016) Effect of ammonia on the photosynthetic activity of *Arthrospira* and *Chlorella*: a study on chlorophyll fluorescence and electron transport. *Algal Res.* 16:449–457. <https://doi.org/10.1016/j.algal.2016.03.039>
82. Kebede E (1997) Response of *Spirulina platensis* (*Arthrospira fusiformis*) from Lake Chitu, Ethiopia, to salinity stress from sodium salts. *J. Appl. Phycol.* 9:551–558
83. Sosik HM, Olson RJ, Armbrust EV (2010) Flow cytometry in phytoplankton research. In: *Chlorophyll a Fluorescence in aquatic sciences: methods and applications*
84. Azam F, Fenchel T, Field J, Gray JS, Meyer-Reil LA, Thingstad F (1983) The ecological role of water column microbes in the sea. *Mar. Ecol. Prog. Ser.* 10:257–263. <https://doi.org/10.2307/24814647>
85. Longhurst AR, Glen Harrison W (1989) The biological pump: profiles of plankton production and consumption in the upper ocean. *Prog. Oceanogr.* 22:47–123. [https://doi.org/10.1016/0079-6611\(89\)90010-4](https://doi.org/10.1016/0079-6611(89)90010-4)

**Table S1** Cyanobacterial OTU affiliation obtained by alignment of 16S rDNA sequences with NCBI BLAST tool, Genbank Databases, and sequences from strains isolated from Lake Dziani Dzaha [18].

OTU number	NCBI affiliation	Genbank affiliation	Identity (%)	PMC reference strains	Identity (%)
<b>1</b>	<i>Arthrospira</i>	<i>Arthrospira platensis</i>	99%	<i>Arthrospira fusiformis</i>	99%
<b>10</b>	Unknown	<i>Leptolyngbya</i>	≤ 95%	<i>Leptolyngbya</i>	≤ 95%
<b>23</b>	<i>Lyngbya</i>	<i>Microcoleus</i> / <i>Geitlerinema</i>	99%	<i>Sodalinema komarekii</i>	99%
<b>60</b>	<i>Synechococcus</i>	<i>Synechococcus</i>	99%	<i>Spirulina subsalsa</i>	≤ 90%
<b>105</b>	<i>Xenococcus</i>	<i>Xenococcus</i>	98%	<i>Spirulina subsalsa</i>	≤ 92%
<b>450</b>	<i>filamentous cyanobacterium LLi71</i>	<i>filamentous cyanobacterium LLi71</i>	99%	<i>Leptolyngbya</i>	≤ 94%
<b>339</b>	<i>Oscillatoriales cyanobacterium</i>	<i>Leptolyngbya</i>	97%	<i>Leptolyngbya</i>	≤ 93%
<b>365</b>	<i>Oscillatoriales cyanobacterium</i>	<i>Leptolyngbya</i>	97%	<i>Leptolyngbya</i>	≤ 93%

**Table S2** Plastid-related OTU affiliation obtained by alignment of 16S rDNA plastids sequences with NCBI BLAST tool, Genbank Databases, and plastids sequences from Phytoref [46].

OTU number	NCBI affiliation	Genbank affiliation	Identity (%)	Phytoref affiliation	Identity (%)
2	<i>Picocystis salinarum</i>	<i>Picocystis salinarum</i>	99%	<i>Picocystis salinarum</i>	99%
115	<i>Kryptoperidinium foliaceum</i>	<i>Nitzschia/Kryptoperidinium/Amphora</i>	99%	<i>Cymbella</i>	99%
46	Unknown	<i>Amphiprora/Planoglabratella</i>	99%	<i>Cymbella/Cymbopleura</i>	99%
148	Multi-affiliation	<i>Pinnularia/Planoglabratella</i>	99%	<i>Cymbella fuegensis</i>	99%
248	Unknown	<i>Eunotia/Haslea/Asterionellopsis</i>	99%	<i>Cymbella/Haslea</i>	99%
269	Unknown	<i>Planoglabratella/Navicula</i>	98%	<i>Naviculacea</i>	99%
85	<i>Gyrosigma fasciola</i>	<i>Gyrosigma fasciola</i>	99%	<i>Gyrosigma fasciola</i>	99%



**Table S3** Review of *Arthrospira fusiformis* (Cyanobacteria) and *Picocystis salinarum* (Chlorophyta) characteristics.

Descriptors	<i>Arthrospira fusiformis</i>	<i>Picocystis salinarum</i>
Phylum	Bacteria	Eukaryota
Synonymous	<i>Spirulina platensis</i> , <i>Arthrospira platensis</i>	-
Phylogeny	Cyanobacteria, Oscillatoriales, well supported cluster of <i>Arthrospira</i> [18]	Chlorophyta, Prasinophyceae, not well supported Clade VII [50].
Habitats	Wide range distribution in freshwater to hypersaline habitats [86]	Widespread in saline to hypersaline ecosystems. Oxidic and anoxic environments [86].
Morphology	Planktonic, filamentous, solitary trichomes, lengthened (170-2,390 $\mu\text{m}$ ), cells are 9-12 $\mu\text{m}$ wide, 3-7 $\mu\text{m}$ length, with aerotopes regulating buoyancy, non heterocytous, generally coiled with coil diameter: 15-60 $\mu\text{m}$ and distance between two coils: 0-80 $\mu\text{m}$ but straight in Lake Dziani Dzaha, multiplication by fragmentation [18]	Planktonic, green, spherical or ovoid, about 1.5-2.0 $\mu\text{m}$ in diameter, no flagella, bilobed chloroplast [18, 87]
Biovolume ( $\mu\text{m}^3$ )	Cylindrical cell (this study): 235	Spherical cell (this study): 10
Surface/volume	Straight filament: 0.45	Spherical cells: 2.2
Sinking properties	Regulated by the numerous aerotopes and buoyancy, straight filament [18]	Low intrinsic sinking rate due to the small size [70]
Biomass	Highly productive primary producer. Max. 200-1430 $\text{mg L}^{-1}$ dry mass	Highly productive primary producer. Max. 1.0-3.5 x 10 <sup>9</sup> cells $\text{L}^{-1}$ [14]
Grazers	Lesser Flamingos, fish ( <i>Alcolapia graham</i> Boulenger, rotifers ( <i>Brachionus dimidiatus</i> Bryce), <i>B. plicatilis</i> Müller, <i>Hexarthra jenkiniae</i> De Beauchamps), copepods ( <i>Lovenula africana</i> Daday), insects (chironomids) [86].	Brine shrimp: <i>Artemia monica</i> [73]. Crustacean: <i>Lovenula africana</i> Daday [88]. Rotifers: <i>Brachionus dimidiatus</i> Bryce and <i>B. plicatilis</i> Müller [14]. Amoebae.
Biomass crash causes	Cyanophages [89]	Unknown
Salinity tolerance	<u>Natural conditions</u> : 1-300 psu [90] <u>Laboratory conditions</u> : 8.5 - 200 psu [91, 92]	<u>Natural conditions</u> : 10-300 psu. Able to outcompete <i>Arthrospira</i> in high salinity conditions [86]. <u>Laboratory conditions</u> : 0-260 psu [73]
Osmoprotectants	Accumulation of low MW carbohydrates: glucosyl-glycerol, trehalose, glucosylglycerate [93]	Cellular glycine betaine, dimethylsulfoniopropionate [73].
Temperature tolerance	>35°C [94]	>30°C [95]

pH tolerance	>11 [96] pH homeostasis dependent of sodium concentrations [97]	4-12 [73]
Growth rate	Fast-growing : 0.8-1.5 d <sup>-1</sup> , at 35 °C, under saline conditions [98]	Fast-growing rate: 0.7-1 d <sup>-1</sup> [14]
Pigments (specific wavelengths absorbance in nm)	<u>Majors</u> : Chlorophyll-a (431, 617, 666 nm), phycocyanin (550-650) <u>Minors</u> : carotenoids β-carotene, zeaxanthin (this study).	<u>Majors</u> : Chlorophyll a (431, 617, 666 nm), Chlorophyll b (461, 599, 648 nm), β-carotene (454, 479 nm), diatoxanthin (451, 479 nm), monadoxanthin (448, 475 nm) <u>Minors</u> : neoxanthin, violaxanthin, antheraxanthin, lutein, zeaxanthin, alloxanthin [73, 87, 99] Positive growth at very low irradiance (e.g., 0.6 μmol photons m <sup>-2</sup> s <sup>-1</sup> ) Adapted to low irradiance. Positive growth rate (0.2 d <sup>-1</sup> ) at 0.6 μmol photons m <sup>-2</sup> s <sup>-1</sup> [73]
Adaptations to high turbidity	Buoyancy with aerotopes (gas vesicles), high cellular pigment concentrations	
Adaptations to light	Adaptation to high light: self-shading, photoprotective mechanisms, accumulation of bicarbonate in the cytoplasm [93]	
Proteins	60-70 % per unit dry mass [100]	
Lipids	Low content (depending of the culture conditions)	High content during nitrogen limitation [95]
Carbohydrates	10 to 15 % of dry biomass, mainly as rhamnose and glycogen [93]	
Genome size	6 to 6.7 Mpb [93]	25 Mbp estimated by flow cytometry [99]
N <sub>2</sub> -fixation potential	Non-nitrogen fixing species but genes responsible for heterocyst maturation ( <i>patU</i> , <i>hetR</i> , <i>hetF</i> ) and nitrogen fixation conserved in all <i>Arthrospira</i> genomes [93]	Non-nitrogen fixing species

## References

86. Krienitz L, Schagerl M (2016) Tiny and tough: microphytes of East African Soda Lakes
87. Lewini RA, Krienitz L, Oerlicke RG, et al (2000) picoplanktonic green alga. 39:560–565
88. Vareschi E, Vareschi A (1984) The ecology of Lake Nakuru (Kenya). *Oecologia* 61:70–82. <https://doi.org/10.1007/BF00379091>
89. Peduzzi P, Gruber M, Gruber M, Schagerl M (2014) The virus's tooth: cyanophages affect an African flamingo population in a bottom-up cascade. *ISME J* 8:1346–1351. <https://doi.org/10.1038/ismej.2013.241>
90. Dadheech N (2010) Desiccation tolerance in cyanobacteria. *African J Microbiol Res* 4:1584–1593
91. Arruda R, Brito A, da Silva R, Moraes I (2009) Fermentação De *Spirulina Platensis* Sob Condições Naturais De Temperatura E Insolação. *Rev Saúde* 3:16–19
92. Pelizer LH, Moraes IDO (2009) Development of solid state cultivation process for *Spirulina platensis* production. *New Biotechnol.* 25:S223–S224. <https://doi.org/10.1016/j.nbt.2009.06.189>
93. Furmaniak MA, Misztak AE, Franczuk MD, Wilmotte A, Waleron M, Waleron KF (2017) Edible cyanobacterial genus *Arthrospira*: actual state of the art in cultivation methods, genetics, and application in medicine. *Front. Microbiol.* 8:1–21. <https://doi.org/10.3389/fmicb.2017.02541>
94. Vonshak A, Tomaselli L (2000) *Arthrospira* (spirulina): systematics and ecophysiology. *The ecology of cyanobacteria*. Springer, Dordrecht, pp 505–522
95. Wang S, Lambert W, Giang S, Goericke R, Palenik B (2014) Microalgal assemblages in a poikilohaline pond. *J. Phycol.* 50:303–309. <https://doi.org/10.1111/jpy.12158>
96. Belkin S, Boussiba S (1991) Resistance of *Spirulina platensis* to ammonia at high pH values. *Plant Cell Physiol* 32:953–958. <https://doi.org/10.1093/oxfordjournals.pcp.a078182>
97. Schlesinger WH, Raikes JA, Hartley AE, Cross AF (1996) On the spatial pattern of soil nutrients in desert ecosystems. *Ecology* 77:364–374. <https://doi.org/10.2307/2265615>
98. Vonshak A (1997) *Spirulina platensis* (Arthrospira): physiology, cell-biology, and biotechnology. Taylor & Francis, London
99. Lopes Dos Santos A, Pollina T, Gourvil P et al (2017) Chloropicophyceae, a new class of picophytoplanktonic prasinophytes. *Sci. Rep.* 7:1–20. <https://doi.org/10.1038/s41598-017-12412-5>
100. Belay A (2002) The potential application of *Spirulina* (Arthrospira) as a nutritional and therapeutic supplement in health management

Fig. S1

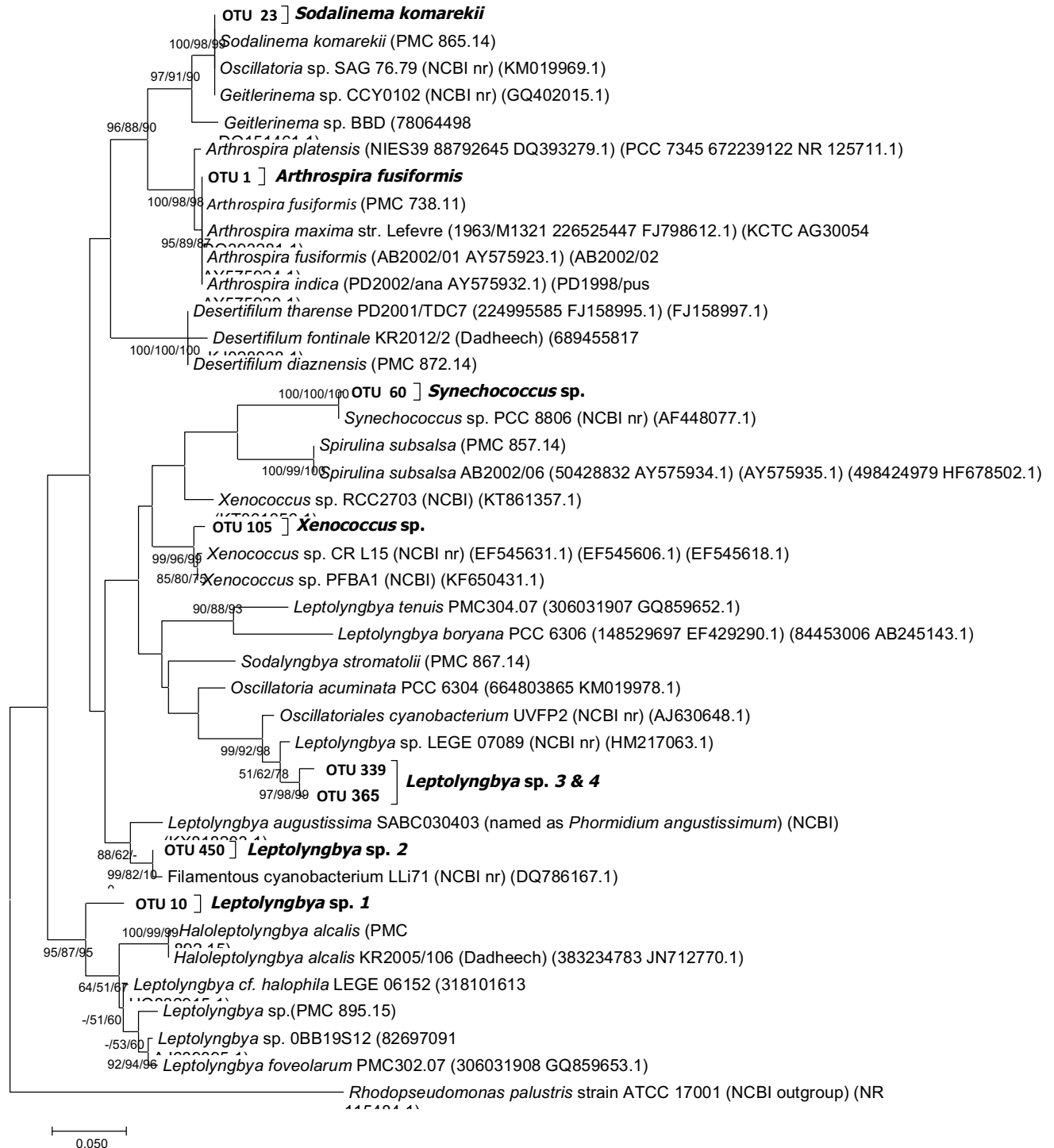
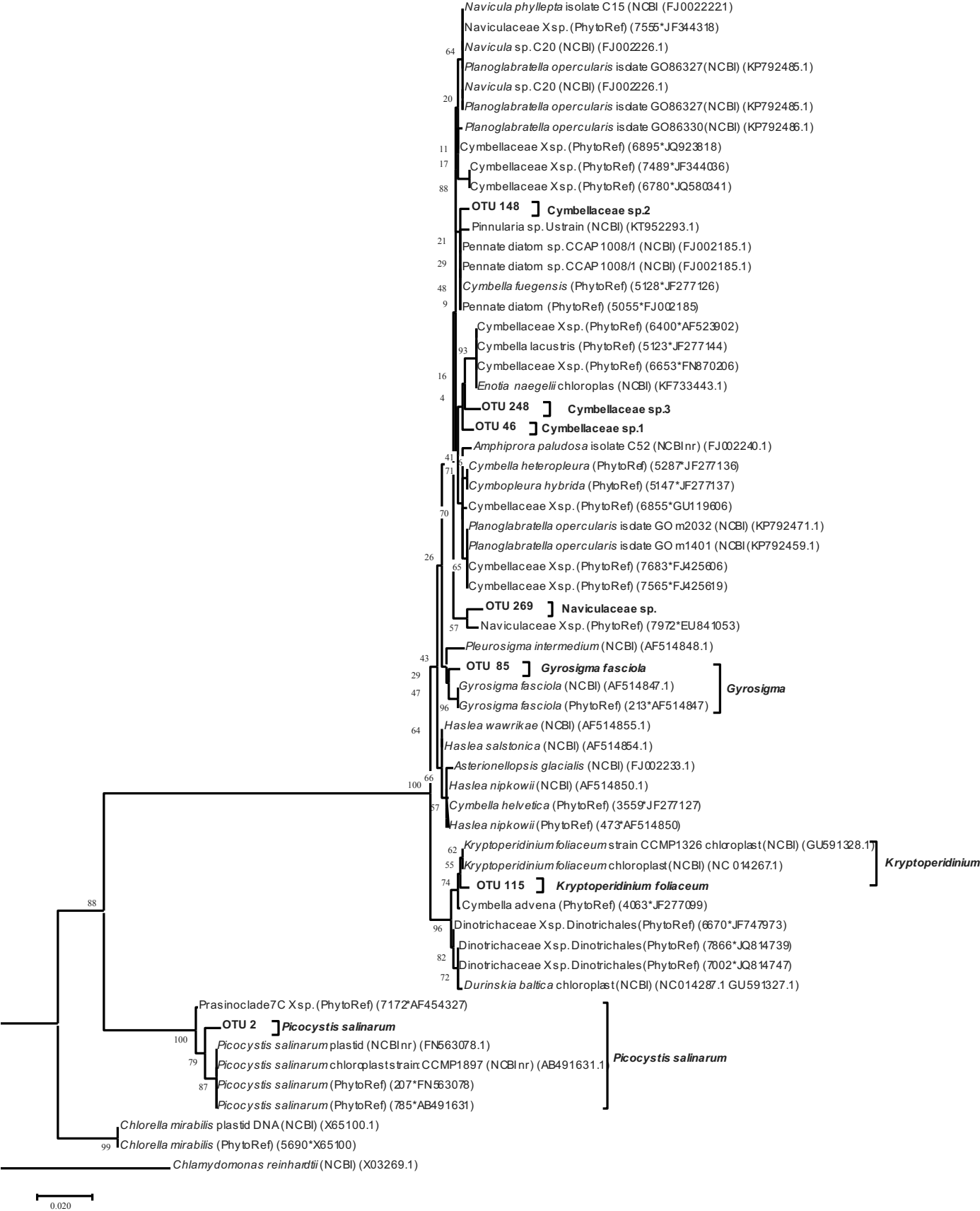


Fig. S2





**Fig. S3**

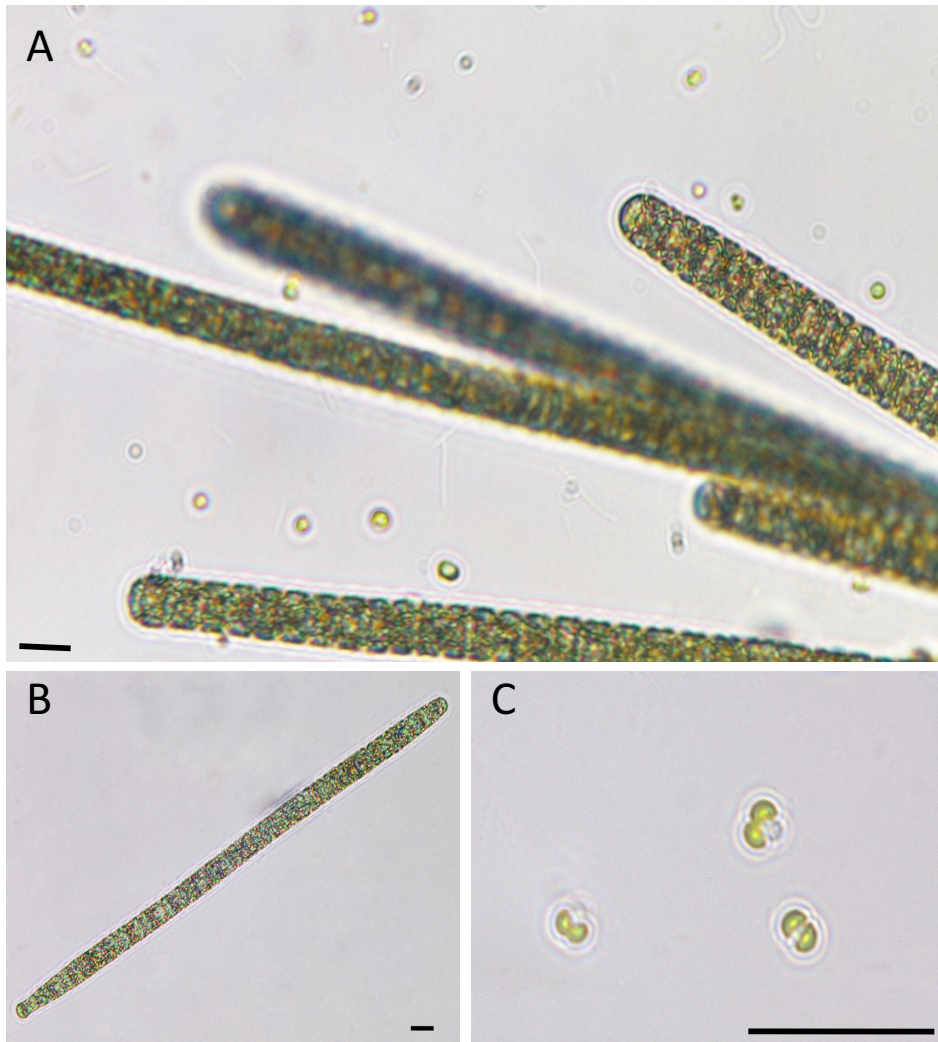


Fig. S4

